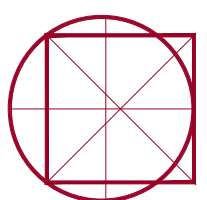
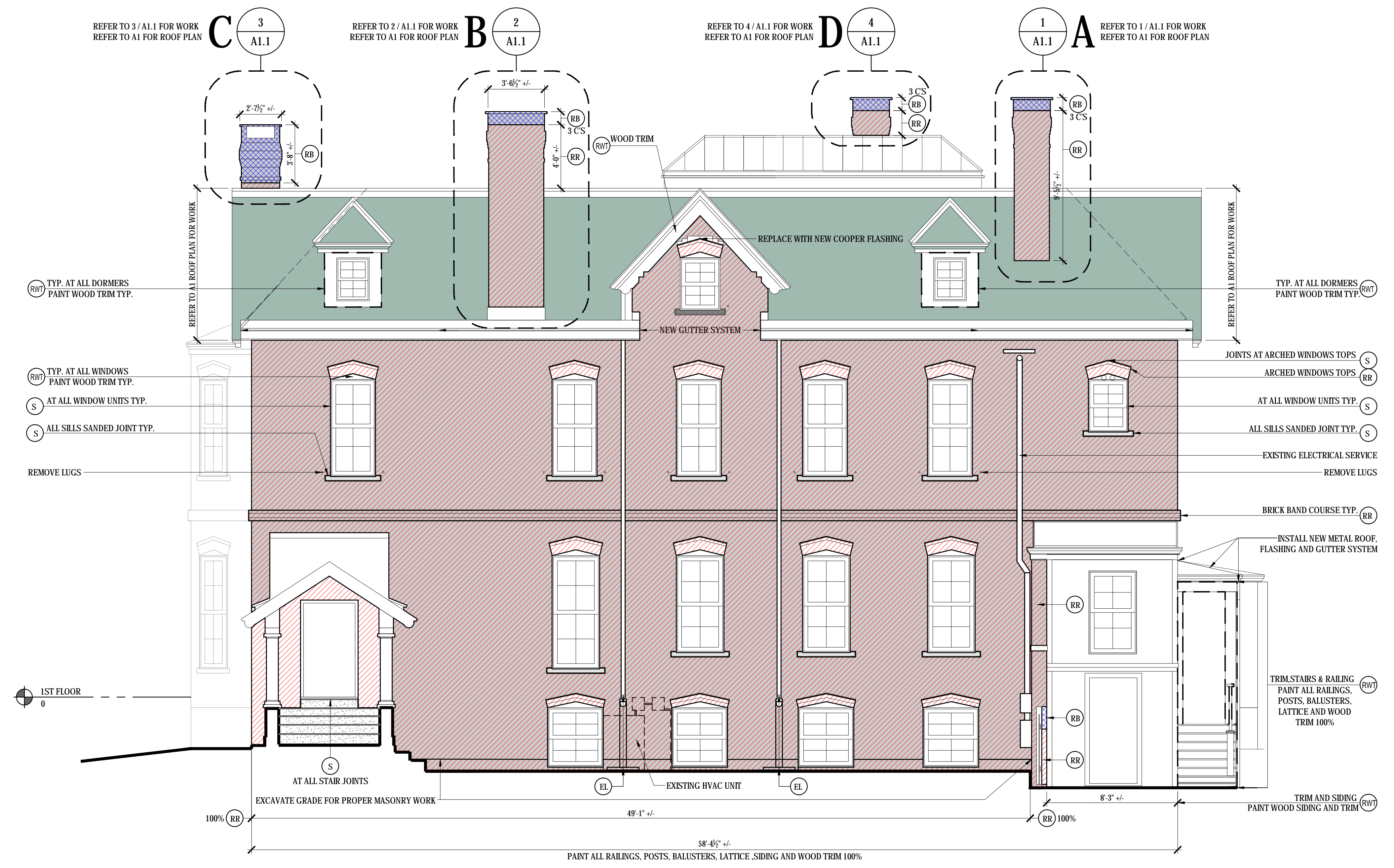


02/01/2016

**Building Envelope Specialists**  
SPECIALIZED BUILDING CONSULTANTS  
PO BOX 2589, SOUTH PORTLAND MAINE, 04116  
PHONE: 207-400-0086



**Episcopal Diocese of Maine**  
143 State Street Portland  
LORING HOUSE  
BUILDING ENVELOPE MASONRY REPAIR



**1 EAST ELEVATION**

SCALE: 1/4"=1'-0"

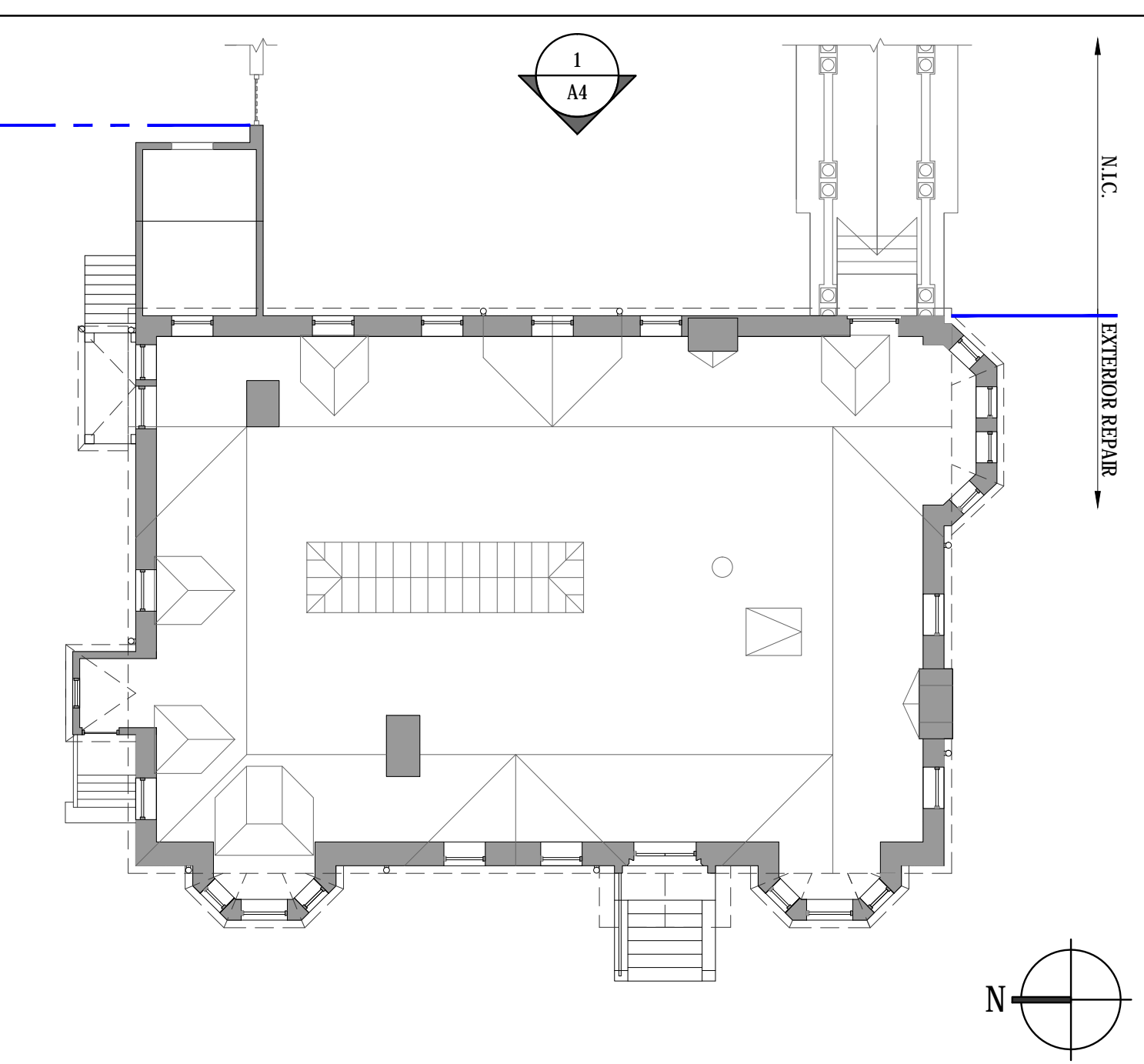
(RR)	(RB)	(RW)	(HCS)	(S)	(E)	(P)	(WC)	(RML)	(RMC)	(EL)	(CL)	
RAKE OUT AND REPOINT	REBUILD	HELICAL WALL TIE	HELICAL CRACK STITCH	BACKER ROD AND SEALANT	EPOXY CRACK IN MASONRY	PATCH MASONRY	WEATHER CAP	REPLACE MASONRY UNITS	REMOVE MASONRY COATINGS	REPAIR OR REPLACE WOOD TRIM	CLEAN	
<p><b>RAKE OUT &amp; RE-POINT:</b> RAKE OUT ALL JOINTS TO 60° OF WET EDGE AND 1/8" UNLESS OTHERWISE NOTED. RE-POINT JOINTS IN MASONRY WITH A PROPORTIONALLY MIXED BY VOLUME POINTING MORTAR. DO NOT LET HARDEN ON THE SURFACE OF MASONRY. MORTAR MUST CURE A MINIMUM OF 7 TO 14 DAYS PRIOR TO FINAL WASHING. WASH MASONRY WITH SPECIFIED PRODUCT LISTED IN THESE DOCUMENTS. ADDITIONAL WASHES MAY BE NECESSARY TO OBTAIN THE DESIRED APPEARANCE.</p> <p><b>POINTING MORTAR RECIPE:</b> AS NOTES ON SHEET A0</p>	<p><b>REBUILD:</b> REMOVE AND REBUILD INDICATED MASONRY 1 WY THE DEEP (UON). REBUILD USING EXISTING MATERIALS IF POSSIBLE. OTHERWISE, MATCH EXISTING MATERIALS. REASSEMBLE TO MATCH ORIGINAL CONFIGURATION AT ALL LOCATIONS. LAY NEW MASONRY VENER TRUE AND PLUMB WITH PROPORTIONALLY MIXED MORTAR TO MATCH EXISTING IN COLOR, POINTING PROFILE AND SAND SELECTION. REMOVE RESIDUAL MORTAR FROM ADJACENT MATERIAL IMMEDIATELY. DO NOT LET HARDEN ON MASONRY FACE. MORTAR MUST CURE FOR AT LEAST 14 TO 30 DAYS PRIOR TO FINAL WASH (CURING TIME MAY VARY DEPENDING ON WEATHER CONDITIONS). WASH MASONRY WITH SPECIFIED PRODUCT LISTED IN THESE DOCUMENTS. ADDITIONAL WASHES MAY BE NECESSARY TO OBTAIN THE DESIRED APPEARANCE.</p> <p>IN ALL AREAS MARKED AS REBUILD INSTALL 6MM HELICAL WALL TIES AS PER THE DETAILS IN THIS DRAWING SET. FINAL POINTING OF THE ARE WILL ALSO BE REQUIRED</p>	<p><b>HELICAL WALL TIES:</b> INSTALL IN AREAS INDICATED 6MM HELICAL WALL TIES BY HELIFIX CORP. THRU THE FACE BRICK MORTAR JOINTS INTO THE BACKUP MASONRY AS INDICATED IN THE DRAWINGS AND DETAILS. ALSO REFERENCE THE MANUFACTURER'S SPECIFICATION FOR DEPTH OF PENETRATION INTO BACK UP AND DEPTH OF HELICAL WALL TIE HEAD BEHIND MORTAR JOINT. AREAS WHERE WALL TIES ARE INSTALLED, THE ENTIRE FIELD IS TO BE RAKED OUT AND REPOINTED AS THE ABOVE "RR" NOTE INDICATES.</p>	<p><b>HELICAL CRACK STITCH:</b> INSTALL 4MM S.S. HELICAL ANCHORS BY HELIFIX CORP. AS PER MANUFACTURER'S RECOMMENDATIONS. THE DIGIT IN THE KEYNOTE SYMBOL REPRESENTS THE NUMBER OF STITCHING ANCHORS RECOMMENDED WITHIN THE DEFINED AREA OF REPAIR. PLACE STITCHING AS INDICATED IN THE DRAWINGS AND DETAILS.</p>	<p><b>SEALANT:</b> -INSTALL NEW CLOSED CELL FOAM BACKER ROD AS REQUIRED AFTER RE-POINTING. INSTALL SEALANT PER THE DETAILS AND MANUFACTURER'S SPECIFICATIONS. CONTRACTOR WILL COORDINATE A PULL TEST APPROVAL WITH SEALANT MANUFACTURER'S REP FOR WARRANTY PURPOSES AND SUBMIT A COPY TO BES. ALL SEALANT JOINTS TO BE SANDED TO MATCH MORTAR.</p>	<p><b>EPOXY:</b> CONTRACTOR WILL APPLY THE 2-PART EPOXY RESIN TO REPAIR MASONRY ELEMENTS. IF MATERIAL IS FRACTURED INTO LOOSE PIECES, DRILL THREADED ANCHORING PINS INTO ELEMENTS AS PART OF THE REPAIR. IF THE CAUSE OF CRACKING IS DUE TO STRUCTURAL LOADING, CONTACT BUILDING ENVELOPE SPECIALISTS FOR ADDITIONAL REPAIR MEASURES. IF SECTION OF STONE IS LOOSE, REMOVE, CLEAN, AND EPOXY IN ORIGINAL LOCATION</p>	<p><b>PATCH:</b> REMOVE LOOSE, SCALING OR SPALLING MASONRY. PATCH WITH PRODUCT INDICATED IN THIS DRAWING SET SPECIFIC TO THE MATERIAL BEING PATCHED.</p>	<p><b>WEATHER CAP:</b> -INSTALL WEATHERCAP LEAD STONE FLASHING STRIPS IN ALL LOCATIONS LOCATION WHERE TEE'S ARE INDICATED ON DRAWINGS. USE SIZE OF STRIPS AS RECOMMENDED BY MANUFACTURER AND COMPATIBLE WITH STYLE AND CONFIGURATION OF EXISTING. STRIPS SHOULD BE OF SUFFICIENT SIZE TO COVER THE SEALANT JOINT WIDTH PLUS A PERCENTAGE ALLOWANCE FOR ANTICIPATED. IN ALL LOCATIONS WHERE THERE IS A LUG AS PART OF THE MASONRY THE WEATHERCAP WILL LAP UP AND OVER THE TOP OF THE LUG.</p>	<p><b>REPLACE MASONRY UNITS:</b> REMOVE THE BROKEN SPALLED OR DAMAGED MASONRY UNITS AND REPLACE WITH MATCHING MASONRY.</p>	<p><b>REMOVE MASONRY COATINGS:</b> AREAS INDICATED IN THE DRAWINGS TO HAVE ALL PAINTS AND MASONRY COATINGS REMOVED AS INDICATED BY THE DRAWINGS AND NOTES.</p>	<p><b>REPAIR OR REPLACE WOOD TRIM:</b> AREAS INDICATED ON THE DRAWINGS WHERE WOOD TRIM IS DETERIORATED, DAMAGED OR MISSING, REPAIR WITH EPOXY FILLER OR REPLACE WITH NEW MATCHING MATERIAL. PRIME ALL SIDES, AFFIX WITH MATCHING FASTENERS, AND FINISH PAINT. IN AN AREA WHERE FLASHING ARE EXPOSED REPAIR FLASHING AS REQUIRED PRIOR TO DOING WOOD REPAIR. IF GUIDANCE IS REQUIRED PLEASE CONTACT BES PRIOR TO COMPLETING WORK. CONTRACTOR REQUIRED TO CARRY ENOUGH SCOPE TO REPAIR DAMAGED AREAS.</p>	<p><b>CLEAN:</b> PRE-WASH ALL THE MASONRY AND MORTAR JOINTS WITH SPECIFIED PRODUCT BELOW. AFTER COMPLETION OF REPAIR A FINAL WASH MUST ALSO BE DONE WITH THE SPECIFIED PRODUCT BELOW. PROTECT ALL NON BRICK MASONRY AREAS FROM CLEANING SOLUTION. WHEN CLEANING BE SURE TO WASH ALL MASONRY RETURNS AT WALLS AND WINDOW / DOOR OPENINGS AS WELL AS ALL SIDES OF COLUMNS.</p>	<p><b>EXISTING SAND STONE</b></p> <p><b>EXISTING LIME STONE</b></p> <p><b>EXISTING GRANITE</b></p> <p><b>EXISTING BRICK</b></p> <p><b>BLACK MONSON SLATE SHINGLES</b></p>
<p><b>RAKE OUT &amp; RE-POINT:</b> RAKE OUT ALL JOINTS TO 60° OF WET EDGE AND 1/8" UNLESS OTHERWISE NOTED. RE-POINT JOINTS IN MASONRY WITH A PROPORTIONALLY MIXED BY VOLUME POINTING MORTAR. DO NOT LET HARDEN ON THE SURFACE OF MASONRY. MORTAR MUST CURE A MINIMUM OF 7 TO 14 DAYS PRIOR TO FINAL WASHING. WASH MASONRY WITH SPECIFIED PRODUCT LISTED IN THESE DOCUMENTS. ADDITIONAL WASHES MAY BE NECESSARY TO OBTAIN THE DESIRED APPEARANCE.</p> <p><b>POINTING MORTAR RECIPE:</b> AS NOTES ON SHEET A0</p>												
<p><b>REBUILD:</b> REMOVE AND REBUILD INDICATED MASONRY 1 WY THE DEEP (UON). REBUILD USING EXISTING MATERIALS IF POSSIBLE. OTHERWISE, MATCH EXISTING MATERIALS. REASSEMBLE TO MATCH ORIGINAL CONFIGURATION AT ALL LOCATIONS. LAY NEW MASONRY VENER TRUE AND PLUMB WITH PROPORTIONALLY MIXED MORTAR TO MATCH EXISTING IN COLOR, POINTING PROFILE AND SAND SELECTION. REMOVE RESIDUAL MORTAR FROM ADJACENT MATERIAL IMMEDIATELY. DO NOT LET HARDEN ON MASONRY FACE. MORTAR MUST CURE FOR AT LEAST 14 TO 30 DAYS PRIOR TO FINAL WASH (CURING TIME MAY VARY DEPENDING ON WEATHER CONDITIONS). WASH MASONRY WITH SPECIFIED PRODUCT LISTED IN THESE DOCUMENTS. ADDITIONAL WASHES MAY BE NECESSARY TO OBTAIN THE DESIRED APPEARANCE.</p> <p>IN ALL AREAS MARKED AS REBUILD INSTALL 6MM HELICAL WALL TIES AS PER THE DETAILS IN THIS DRAWING SET. FINAL POINTING OF THE ARE WILL ALSO BE REQUIRED</p>												
<p><b>HELICAL WALL TIES:</b> INSTALL IN AREAS INDICATED 6MM HELICAL WALL TIES BY HELIFIX CORP. THRU THE FACE BRICK MORTAR JOINTS INTO THE BACKUP MASONRY AS INDICATED IN THE DRAWINGS AND DETAILS. ALSO REFERENCE THE MANUFACTURER'S SPECIFICATION FOR DEPTH OF PENETRATION INTO BACK UP AND DEPTH OF HELICAL WALL TIE HEAD BEHIND MORTAR JOINT. AREAS WHERE WALL TIES ARE INSTALLED, THE ENTIRE FIELD IS TO BE RAKED OUT AND REPOINTED AS THE ABOVE "RR" NOTE INDICATES.</p>												
<p><b>HELICAL CRACK STITCH:</b> INSTALL 4MM S.S. HELICAL ANCHORS BY HELIFIX CORP. AS PER MANUFACTURER'S RECOMMENDATIONS. THE DIGIT IN THE KEYNOTE SYMBOL REPRESENTS THE NUMBER OF STITCHING ANCHORS RECOMMENDED WITHIN THE DEFINED AREA OF REPAIR. PLACE STITCHING AS INDICATED IN THE DRAWINGS AND DETAILS.</p>												
<p><b>SEALANT:</b> -INSTALL NEW CLOSED CELL FOAM BACKER ROD AS REQUIRED AFTER RE-POINTING. INSTALL SEALANT PER THE DETAILS AND MANUFACTURER'S SPECIFICATIONS. CONTRACTOR WILL COORDINATE A PULL TEST APPROVAL WITH SEALANT MANUFACTURER'S REP FOR WARRANTY PURPOSES AND SUBMIT A COPY TO BES. ALL SEALANT JOINTS TO BE SANDED TO MATCH MORTAR.</p>												
<p><b>EPOXY:</b> CONTRACTOR WILL APPLY THE 2-PART EPOXY RESIN TO REPAIR MASONRY ELEMENTS. IF MATERIAL IS FRACTURED INTO LOOSE PIECES, DRILL THREADED ANCHORING PINS INTO ELEMENTS AS PART OF THE REPAIR. IF THE CAUSE OF CRACKING IS DUE TO STRUCTURAL LOADING, CONTACT BUILDING ENVELOPE SPECIALISTS FOR ADDITIONAL REPAIR MEASURES. IF SECTION OF STONE IS LOOSE, REMOVE, CLEAN, AND EPOXY IN ORIGINAL LOCATION</p>												
<p><b>PATCH:</b> REMOVE LOOSE, SCALING OR SPALLING MASONRY. PATCH WITH PRODUCT INDICATED IN THIS DRAWING SET SPECIFIC TO THE MATERIAL BEING PATCHED.</p>												
<p><b>WEATHER CAP:</b> -INSTALL WEATHERCAP LEAD STONE FLASHING STRIPS IN ALL LOCATIONS LOCATION WHERE TEE'S ARE INDICATED ON DRAWINGS. USE SIZE OF STRIPS AS RECOMMENDED BY MANUFACTURER AND COMPATIBLE WITH STYLE AND CONFIGURATION OF EXISTING. STRIPS SHOULD BE OF SUFFICIENT SIZE TO COVER THE SEALANT JOINT WIDTH PLUS A PERCENTAGE ALLOWANCE FOR ANTICIPATED. IN ALL LOCATIONS WHERE THERE IS A LUG AS PART OF THE MASONRY THE WEATHERCAP WILL LAP UP AND OVER THE TOP OF THE LUG.</p>												
<p><b>REPLACE MASONRY UNITS:</b> REMOVE THE BROKEN SPALLED OR DAMAGED MASONRY UNITS AND REPLACE WITH MATCHING MASONRY.</p>												
<p><b>REMOVE MASONRY COATINGS:</b> AREAS INDICATED IN THE DRAWINGS TO HAVE ALL PAINTS AND MASONRY COATINGS REMOVED AS INDICATED BY THE DRAWINGS AND NOTES.</p>												
<p><b>REPAIR OR REPLACE WOOD TRIM:</b> AREAS INDICATED ON THE DRAWINGS WHERE WOOD TRIM IS DETERIORATED, DAMAGED OR MISSING, REPAIR WITH EPOXY FILLER OR REPLACE WITH NEW MATCHING MATERIAL. PRIME ALL SIDES, AFFIX WITH MATCHING FASTENERS, AND FINISH PAINT. IN AN AREA WHERE FLASHING ARE EXPOSED REPAIR FLASHING AS REQUIRED PRIOR TO DOING WOOD REPAIR. IF GUIDANCE IS REQUIRED PLEASE CONTACT BES PRIOR TO COMPLETING WORK. CONTRACTOR REQUIRED TO CARRY ENOUGH SCOPE TO REPAIR DAMAGED AREAS.</p>												
<p><b>CLEAN:</b> PRE-WASH ALL THE MASONRY AND MORTAR JOINTS WITH SPECIFIED PRODUCT BELOW. AFTER COMPLETION OF REPAIR A FINAL WASH MUST ALSO BE DONE WITH THE SPECIFIED PRODUCT BELOW. PROTECT ALL NON BRICK MASONRY AREAS FROM CLEANING SOLUTION. WHEN CLEANING BE SURE TO WASH ALL MASONRY RETURNS AT WALLS AND WINDOW / DOOR OPENINGS AS WELL AS ALL SIDES OF COLUMNS.</p>												
<p><b>EXISTING SAND STONE</b></p> <p><b>EXISTING LIME STONE</b></p> <p><b>EXISTING GRANITE</b></p> <p><b>EXISTING BRICK</b></p> <p><b>BLACK MONSON SLATE SHINGLES</b></p>												

**2 NOTES AND LEGEND**

**3 KEY PLAN**

SCALE: 1/8"=1'-0"

SCALE: 3/32"=1'-0"



REVISIONS

DATE:	02-01-2016
CHECKED BY:	DPD
DRAWN BY:	RJH
ISSUED:	CONSTRUCTION DOCUMENTS

**EAST ELEVATION, NOTES AND KEY PLAN**

**A4**