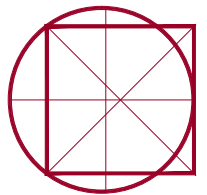


02/01/2016

Building Envelope Specialists
SPECIALIZED BUILDING CONSULTANTS
PO BOX 2589, SOUTH PORTLAND MAINE, 04116
PHONE: 207-400-0086



Episcopal Diocese of Maine
143 State Street Portland
LORING HOUSE
BUILDING ENVELOPE MASONRY REPAIR

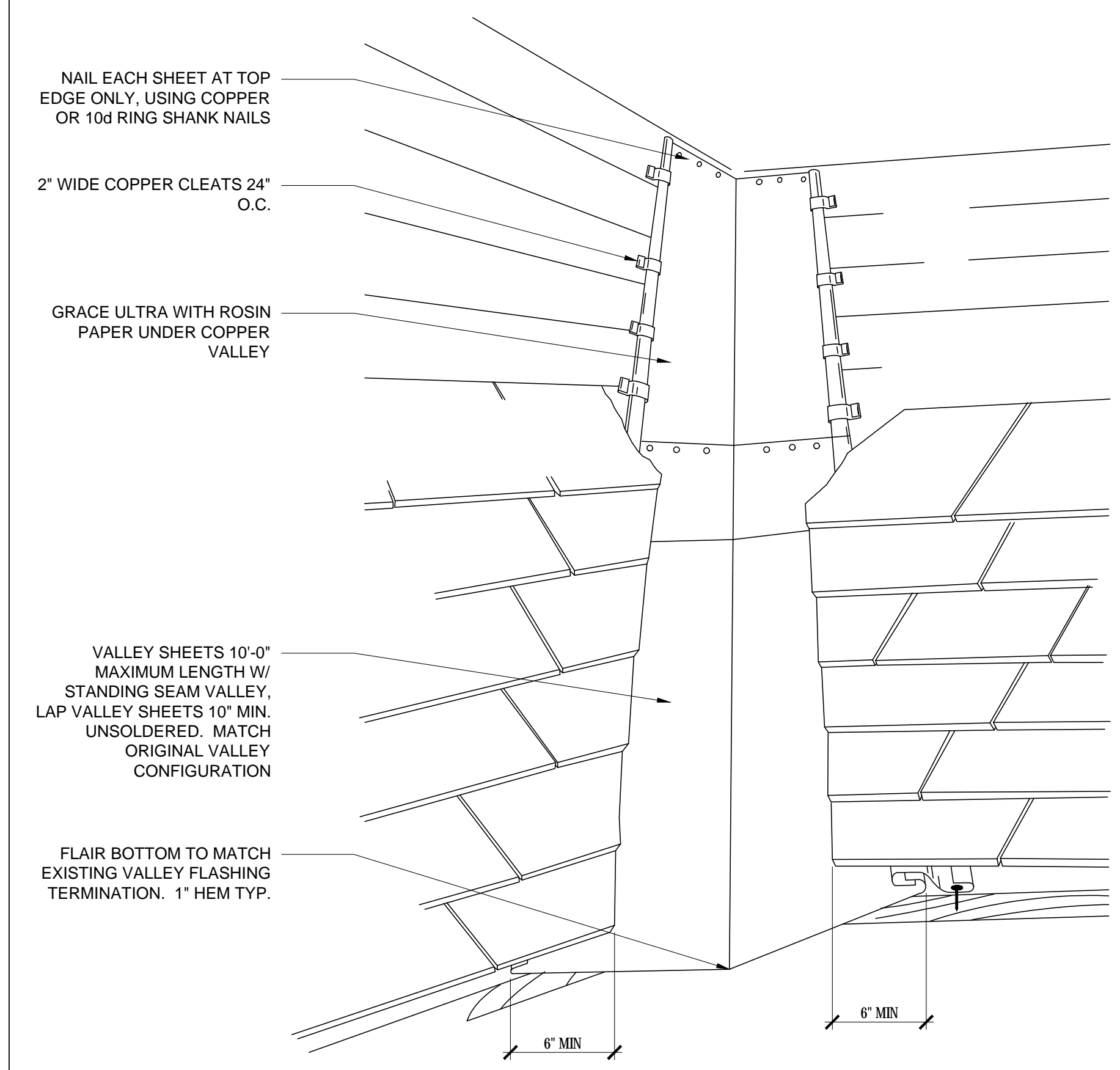
REVISIONS

DRAWN BY: R/JH
CHECKED BY: DPD
DATE: 02-01-2016
ISSUED: CONSTRUCTION DOCUMENTS

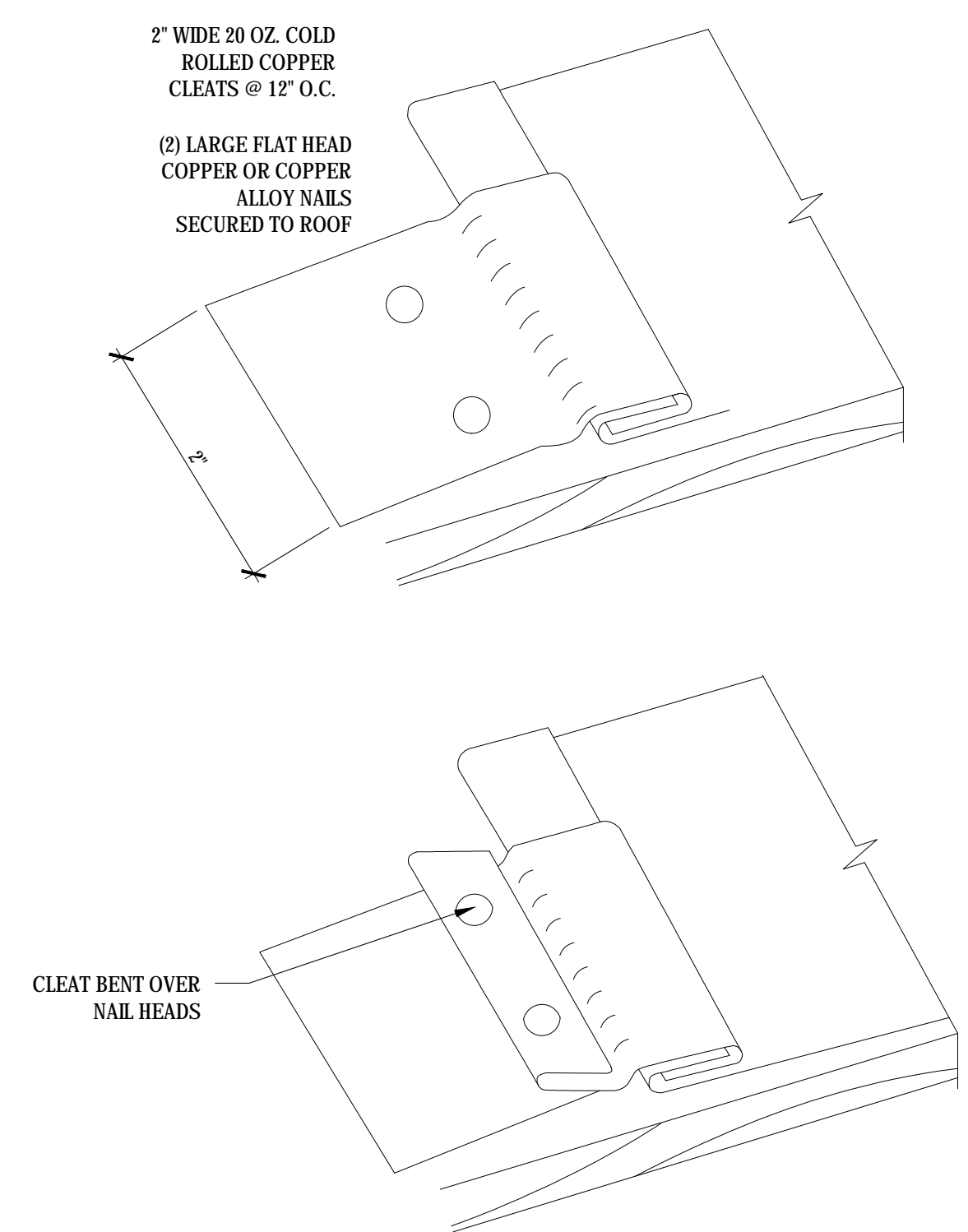
ROOF DETAILS

A1.2

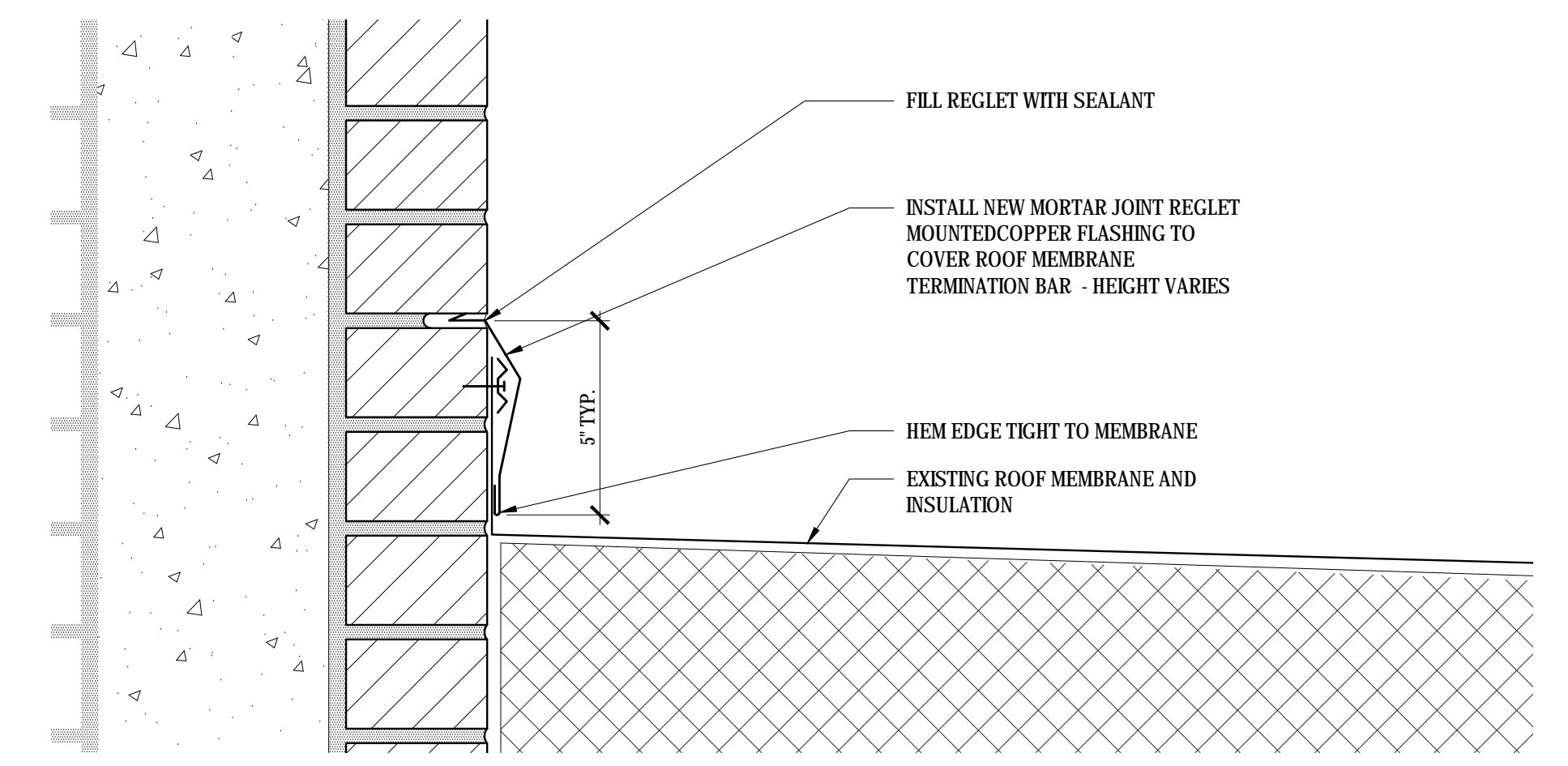
SCALE: AS NOTED
PROJECT NUMBER: 008-15
© BUILDING ENVELOPE SPECIALISTS, INC. 2012



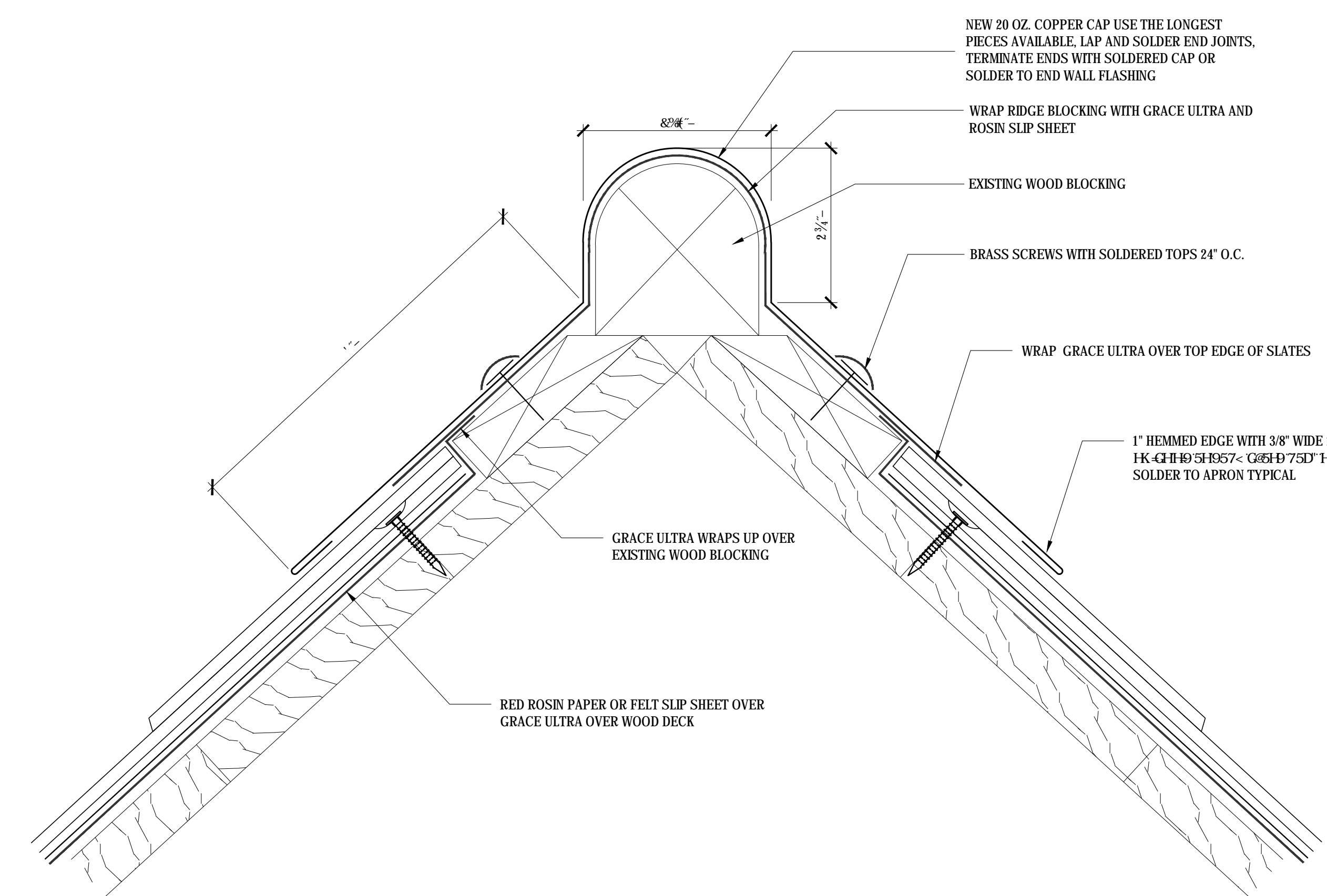
5 TYPICAL VALLEY FLASHING SCALE: 3/8"=1'-0"



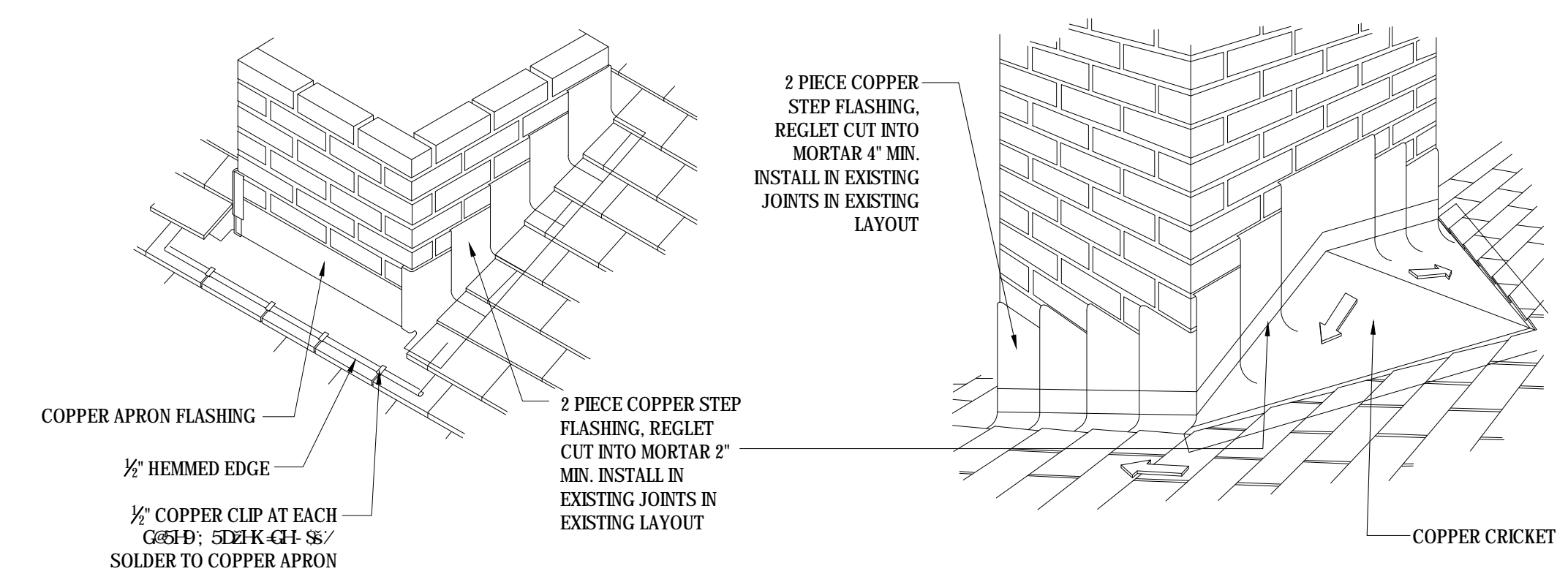
4 TYPICAL CLEAT DETAIL SCALE: 1"=1'-0"



3 EPDM COUNTER FLASHING AT CHIMNEY SCALE: 1"=1'-0"



2 TYPICAL COPPER RIDGE SCALE: 6"=1'-0"



NOTE: AT SMALL CRICKETS THE TRANSVERSE JOINT SHOULD BE NO LARGER THAN 12". AT LARGE CRICKETS HORIZONTAL JOINT LENGTH SHOULD NOT EXCEED 18".

CHIMNEY FLASHING CRICKET 1"=1'-0"

1 CHIMNEY FLASHING CRICKET SCALE: 1"=1'-0"