

St. Luke's Cathedral
 143 State street Portland
BUILDING ENVELOPE REPAIRS
 SOUTH GABLE WALL AND Rosary Window

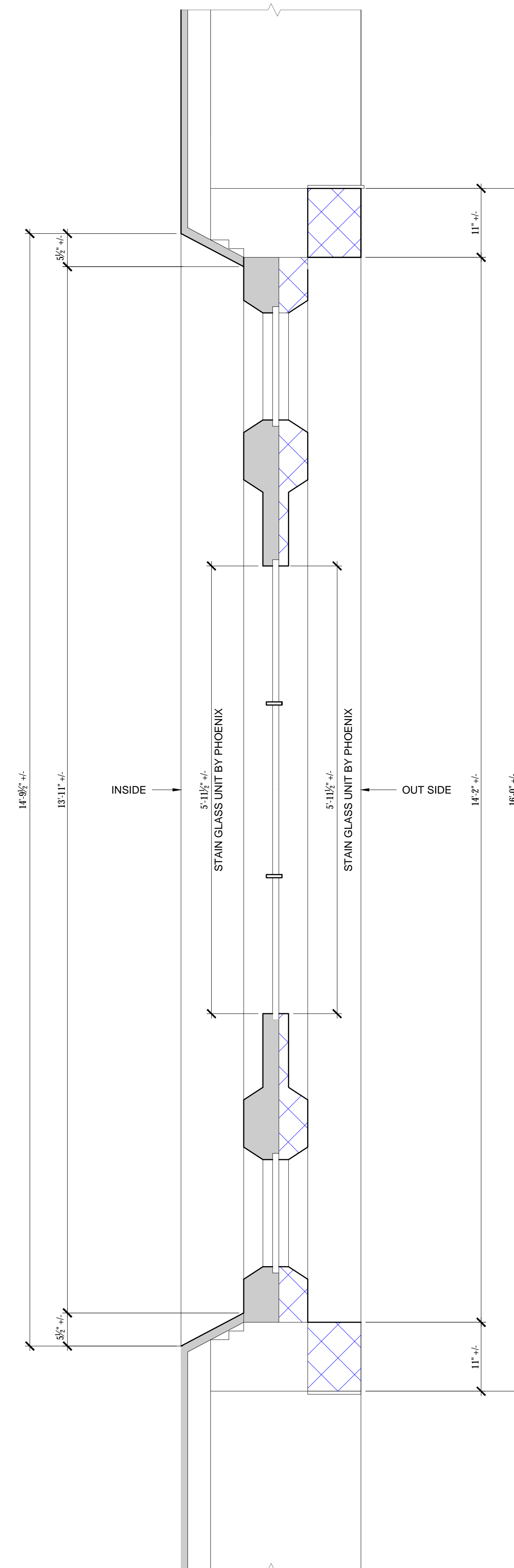
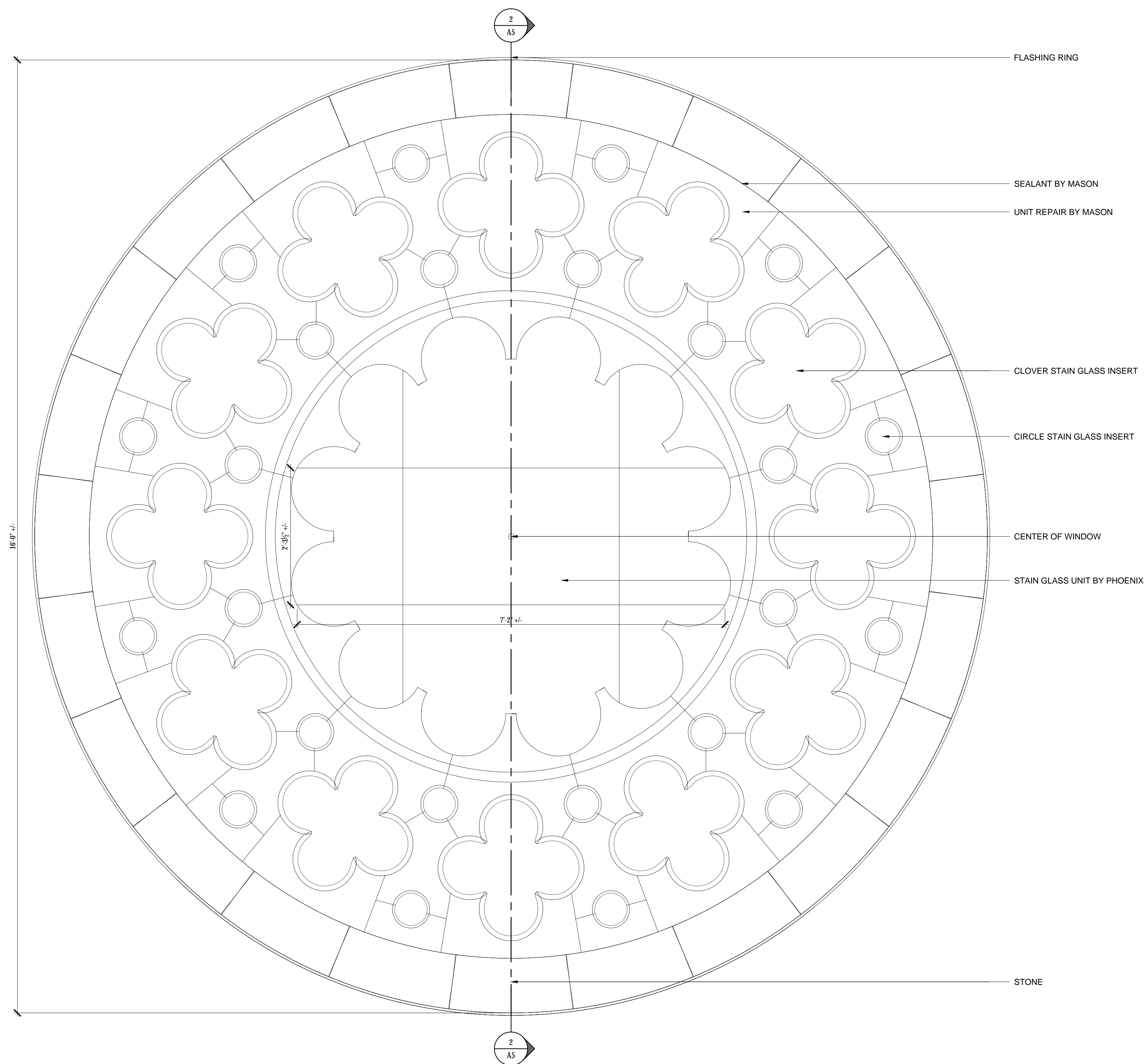
REVISIONS

DRAWN BY:	R/JH
CHECKED BY:	DPD
DATE:	03-09-2016
ISSUED:	CONSTRUCTION

DETAILS

A5

SCALE: AS NOTED
 PROJECT NUMBER: 045-12
 © BUILDING ENVELOPE SPECIALISTS, INC. 2012



1 WINDOW DETAIL

SCALE: 1"=1'

2 WINDOW SECTION

SCALE: 1"=1'