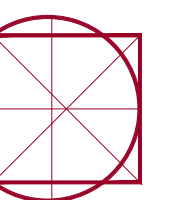
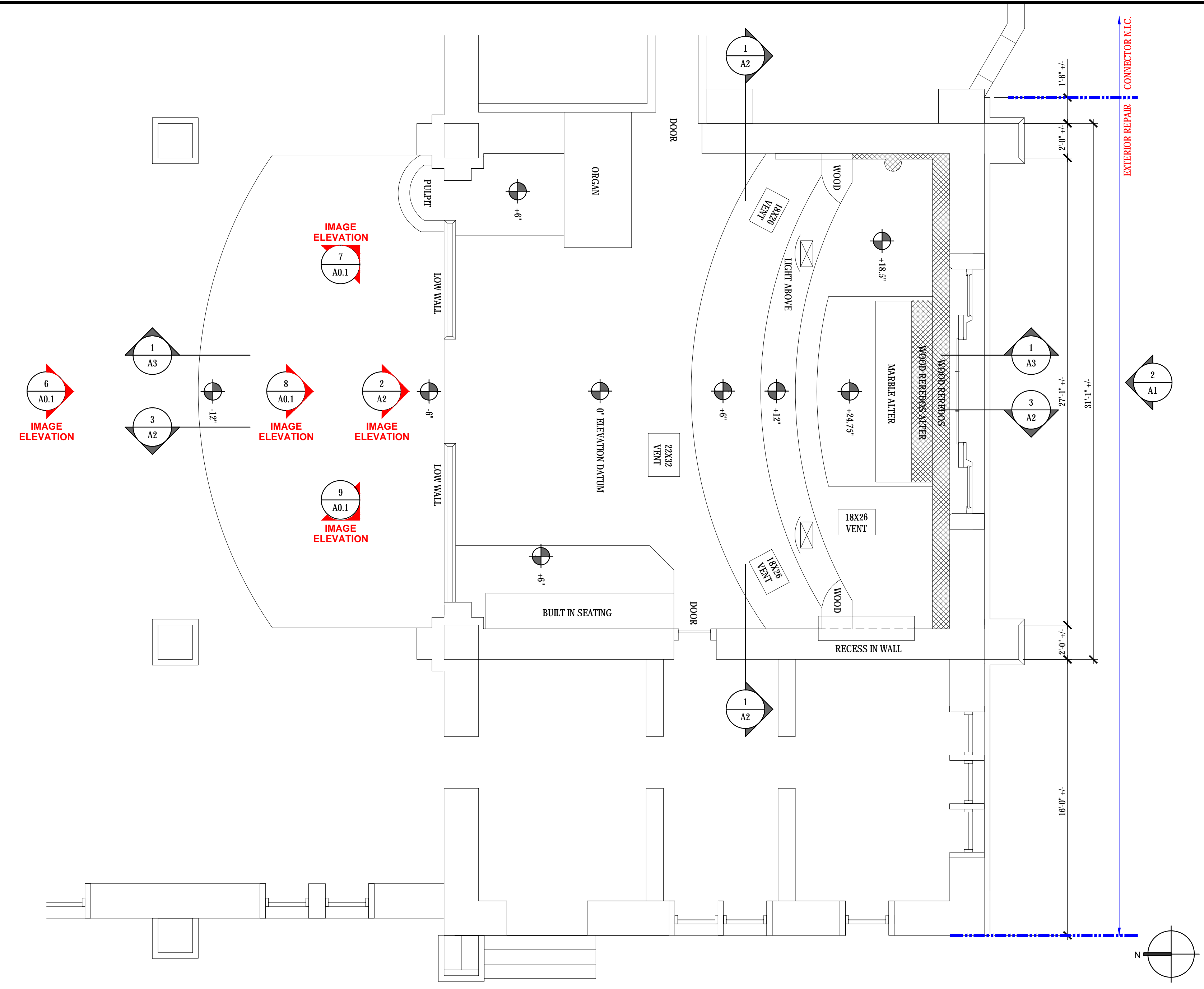
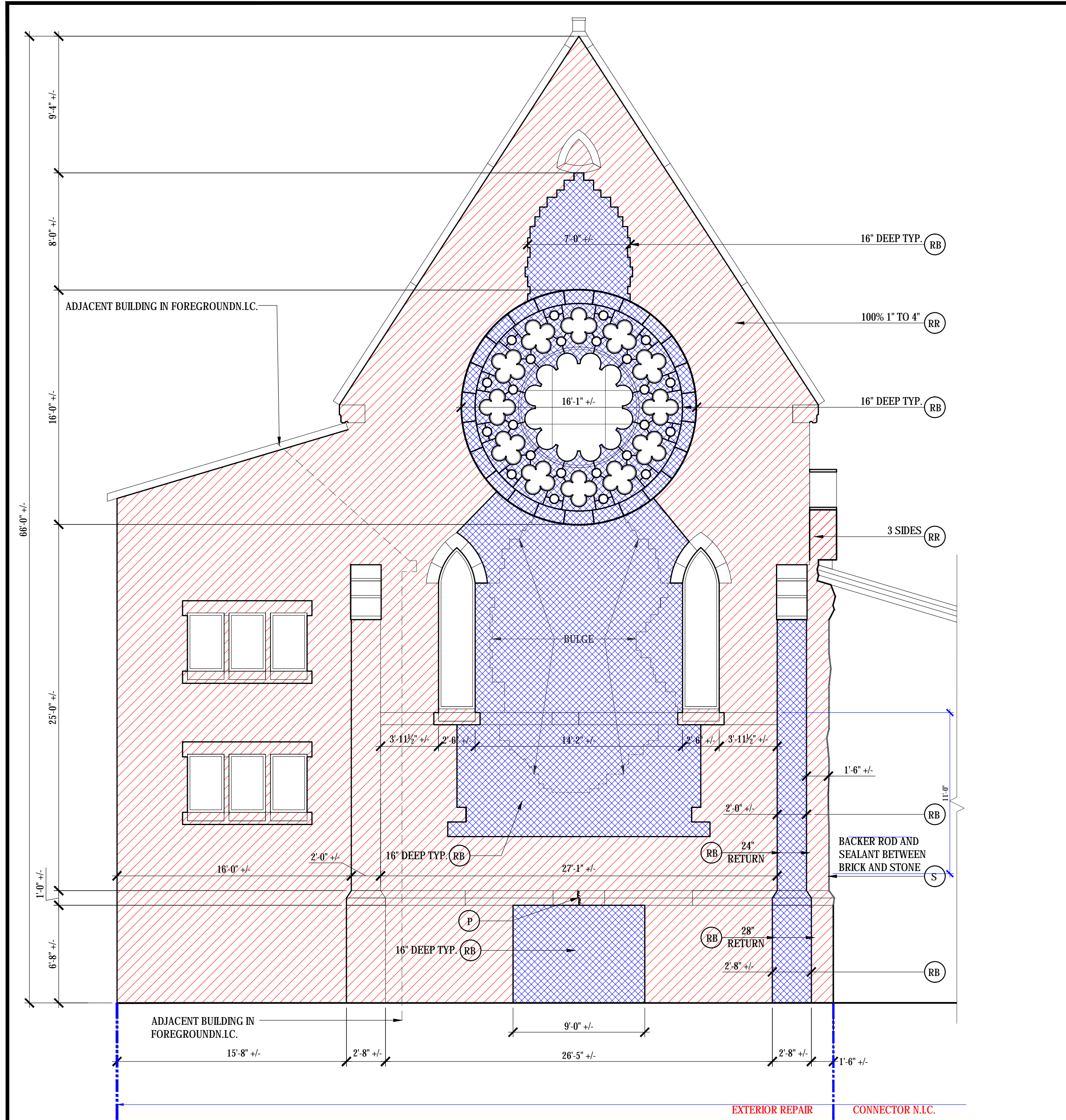


Building Envelope Specialists
SPECIALIZED BUILDING CONSULTANTS
PO BOX 2589, SOUTH PORTLAND MAINE, 04116
PHONE: 207-400-0066



St. Luke's Cathedral
143 State Street Portland
BUILDING ENVELOPE REPAIRS
SOUTH GABLE WALL AND Rosary Window



1 SOUTH ELEVATION

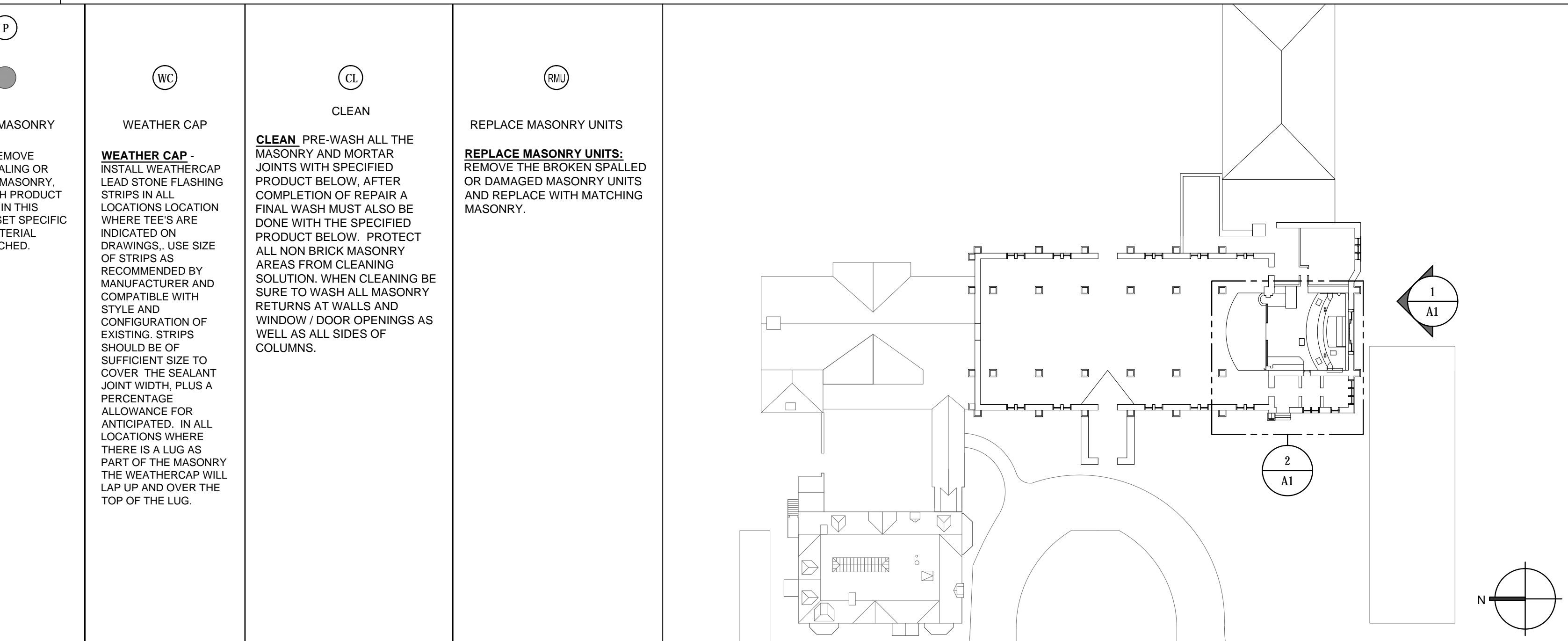
2 ENLARGED FLOOR PLAN

SCALE: 3/16" = 1'-0"

SCALE: 1/4" = 1'-0"

(RR)	(RB)	(HWT)	(HCS)	(S)	(E)	(P)	(WC)	(CL)	(RMU)
RAKE OUT AND REPOINT	REBUILD	HELICAL WALL TIE	HELICAL CRACK STITCH	BACKER ROD AND SEALANT	EPOXY CRACK IN MASONRY	PATCH MASONRY	WEATHER CAP	CLEAN	REPLACE MASONRY UNITS
<p>RAKE OUT & RE-POINT: RAKE OUT ALL JOINTS TO A MINIMUM OF 1/2" DEEP. RE-POINT JOINTS IN MASONRY WITH A PROPORTIONALLY MIXED VOLUME POINTING MORTAR. DO NOT LET HARDEN ON THE SURFACE OF MASONRY. MORTAR MUST CURE A MINIMUM OF 7 TO 14 DAYS PRIOR TO FINAL WASHING. WASH MASONRY WITH SPECIFIED PRODUCT LISTED IN THESE DOCUMENTS. ADDITIONAL WASHES MAY BE NECESSARY TO OBTAIN THE DESIRED APPEARANCE.</p> <p>POINTING MORTAR RECIPE: AS NOTES ON SHEET A0</p>	<p>REBUILD: REMOVE AND REBUILD INDICATED MASONRY WITH THE DEEP (UON). REBUILD USING EXISTING MATERIALS IF POSSIBLE, OTHER WISE, MATCH EXISTING MATERIALS. REASSEMBLE TO MATCH ORIGINAL CONFIGURATION AT ALL LOCATIONS. LAY NEW MASONRY VENEER TRUE AND PLUMB WITH PROPORTIONALLY MIXED MORTAR TO MATCH EXISTING IN COLOR, POINTING PROFILE AND SAND SELECTION. REMOVE RESIDUAL MORTAR FROM ADJACENT MATERIAL IMMEDIATELY. DO NOT LET HARDEN ON MASONRY FACE. MORTAR MUST CURE FOR AT LEAST 14 TO 30 DAYS PRIOR TO FINAL WASH (CURING TIME MAY VARY DEPENDING ON WEATHER CONDITIONS). WASH MASONRY WITH SPECIFIED PRODUCT LISTED IN THESE DOCUMENTS. ADDITIONAL WASHES MAY BE NECESSARY TO OBTAIN THE DESIRED APPEARANCE.</p> <p>IN ALL AREAS MARKED AS REBUILD INSTALL 6MM HELICAL WALL TIES AS PER THE DETAILS IN THIS DRAWING SET. FINAL POINTING OF THE ARE WILL ALSO BE REQUIRED</p>	<p>HELICAL WALL TIES: INSTALL IN AREAS INDICATED BY HELIX CORP. INDICATED 6MM HELICAL WALL TIES BY HELIX CORP. THROUGH THE FACE BRICK MORTAR JOINTS INTO THE BACKUP MATERIAL AS INDICATED IN THE DRAWINGS AND DETAILS. ALSO REFER TO THE MANUFACTURER'S SPECIFICATION FOR DEPTH OF PENETRATION INTO BACK UP AND DEPTH OF HELICAL WALL TIE HEAD BEHIND MORTAR JOINT. AREAS WHERE WALL TIES ARE INSTALLED, THE ENTIRE FIELD IS TO BE RAKED OUT AND REPOINTED AS THE ABOVE "RR" NOTE INDICATES.</p>	<p>HELICAL CRACK STITCH: INSTALL 4MM S.S. HELICAL ANCHORS BY HELIFIX CORP. AS PER MANUFACTURER'S RECOMMENDATIONS. THE DIGIT IN THE KEYNOTE SYMBOL REPRESENTS THE NUMBER OF STITCHING ANCHORS RECOMMENDED WITHIN THE DEFINED AREA OF REPAIR. PLACE STITCHING AS INDICATED IN THE DRAWINGS AND DETAILS.</p>	<p>SEALANT: INSTALL NEW CLOSED CELL FOAM BACKER ROD AS REQUIRED AFTER RE-POINTING. INSTALL SEALANT PER THE DETAILS AND MANUFACTURER'S SPECIFICATIONS. CONTRACTOR WILL COORDINATE A PULL TEST APPROVAL WITH SEALANT MANUFACTURER'S REP FOR WARRANTY PURPOSES AND SUBMIT A COPY TO BES. ALL SEALANT JOINTS TO BE SANDED TO MATCH MORTAR.</p>	<p>EPOXY: CONTRACTOR WILL APPLY THE 2-PART EPOXY RESIN TO REPAIR MASONRY ELEMENTS. IF MATERIAL IS FRACTURED INTO LOOSE PIECES, DRILL 1/8" DIA. HOLES AND INSERT THREADED ANCHORING PINS INTO ELEMENTS AS PART OF THE REPAIR. IF THE CAUSE OF CRACKING IS DUE TO STRUCTURAL LOADING, CONTACT BUILDING ENVELOPE SPECIALISTS FOR ADDITIONAL REPAIR MEASURES. IF SECTION OF STONE IS LOOSE, REMOVE, CLEAN, AND EPOXY IN ORIGINAL LOCATION</p>	<p>PATCH MASONRY: REMOVE LOOSE, SCALING OR SPALLING MASONRY. PATCH WITH PRODUCT INDICATED IN THIS DRAWING SET SPECIFIC TO THE MATERIAL BEING PATCHED.</p>	<p>WEATHER CAP: INSTALL WEATHERCAP LEAD STONE FLASHING STRIPS IN ALL LOCATIONS LOCATION WHERE TIES ARE INDICATED ON DRAWINGS. USE SIZE OF STRIPS AS RECOMMENDED BY MANUFACTURER AND COMPATIBLE WITH STYLE AND CONFIGURATION OF EXISTING. STRIPS SHOULD BE OF SUFFICIENT SIZE TO COVER THE SEALANT JOINT WIDTH, PLUS A PERCENTAGE ALLOWANCE FOR ANTICIPATED. IN ALL LOCATIONS WHERE THERE IS A LUG AS PART OF THE MASONRY THE WEATHERCAP WILL LAP UP AND OVER THE TOP OF THE LUG.</p>	<p>REPLACE MASONRY UNITS: REMOVE THE BROKEN SPALLED OR DAMAGED MASONRY UNITS AND REPLACE WITH MATCHING MASONRY.</p>	

3 NOTES



4 KEY PLAN

SCALE: NTS

SCALE: 1/32" = 1'-0"

REVISIONS

DRAWN BY:	R/H
CHECKED BY:	DPD
DATE:	03-09-2016
ISSUED:	CONSTRUCTION

SOUTH EXTERIOR ELEVATION REPAIR
Rosary And Tracery Windows

A1

SCALE: AS NOTED
PROJECT NUMBER: 045-12
© BUILDING ENVELOPE SPECIALISTS, INC. 2012