

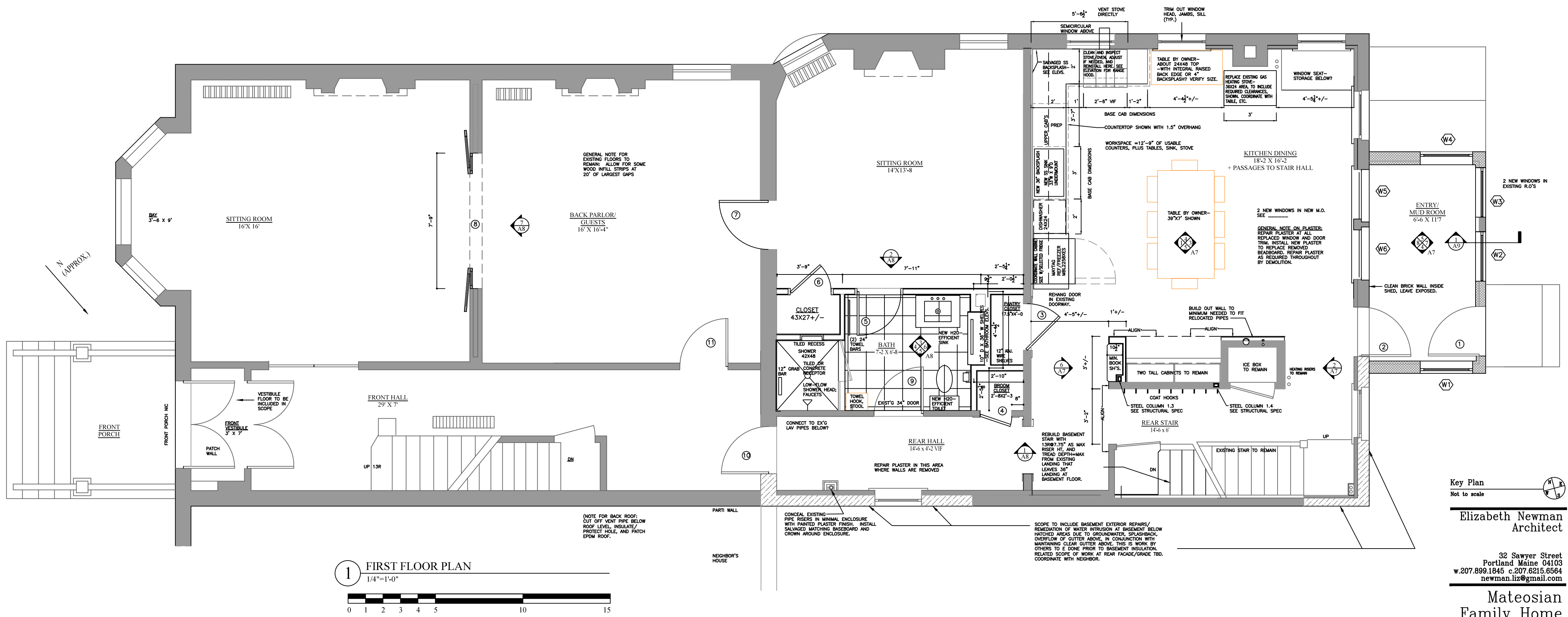
#	LOCATION	UNIT SIZE	R.O.	MAKE	OPERATION	HARDWARE	REMARKS
1	MUD ROOM		3'-0x4'-0	PELLA IMPERVA FIBERGLASS	CASEMENT	STANDARD CRANK WHITE OR SATIN NICKEL?	FIBERGLASS WITH POWDER-COAT EXT FINISH-EXT COLOR OPTIONS INCLUDES BROWN. INTERIOR TO BE PRIMED WHITE. DIVIDERS IN AND OUT WITH SPACERS BETWEEN PANES.
2	MUD ROOM	3'-0/4'-0: 2'-11.5 X 3'-11.5	3'-0x4'-0-USE EXIST'G R.O.	PELLA ARCHITECT 850 SERIES #3377			
3	MUD ROOM		3'-0x4'-0				
4	MUD ROOM		SEE NOTE 1				
5	MUD ROOM/KIT.	2'-9x6'-5			TWO/TWO SINGLE-HUNG	STANDARD CAM-ACTION SASH LOCK, MATCH ADJACENT COLOR; LIFT TO MATCH ADJACENT (NOT PELLA STANDARD)	ALL WOOD, INTEGRAL LIGHT TECH. GRILLES (PERMANENT 7/8" GRILLES IN AND OUT, SPACERS BETWEEN PANES), PRIMED BY MFCTR, PAINTED BY GC. NO INSECT SCREEN OR STORM. WHITE.
6	MUD ROOM/KIT.						
7	MUD RM SKYLIGHTS	X	SEE NOTE 2	VELUX M08	FIXED	-	FOUR LOW-PROFILE UNITS, GANGED USING VELUX EKL FLASHING WITH MINIMUM SPACING. BROWN/BLACK
8	HALF-MOON IN KIT.						
9	BASEMENT STORM	20X36+/- VIF	20X36 +/- CASING OFG-VIF	X	X	X	EXTERIOR STORMS SET INTO EXISTING WOOD CASING TO REPLACE UNITS WITH WIRE MESH
10	BASEMENT STORM						
11	BASEMENT STORM						
12	BASEMENT STORM						
13	BASEMENT STORM						
14	BASEMENT STORM						

NOTE 1: NEW BRICK M.O.: COORDINATE M.O. SIZE--PER, PELLA LIT, ADD 3-1/8" TO FRAME HEIGHT AND WIDTH FOR STD BRICKMOLD. ALT: FOR 3.5" BR.MD., ADD 4.75" . COORD WITH CUT OF'G REQ'S.

NOTE 2: SKYLIGHT M08 FRAME SIZE IS 30-9/16 W X 54-15/16 PER UNIT, PER MFCTR. SEE THEIR PRODUCT INFO FOR CALCULATING R.O. DEPENDING ON FINISH THICKNESS.

#	LOCATION	NEW/EXG	SIZE	MFCTR/TYPER	HARDWARE	REMARKS
1	MUD ROOM EXT	NEW	34X6'-6	PELLA FULLY GLAZED, INS 2x4 LITES	X	FIBERGLASS, PAINTABLE
2	MUD ROOM TO KIT	NEW	32X83	PELLA FULLY GLAZED, INS 2x4 LITES	X	REVERSE SWING, COORD WIDTH WITH INSULATION RETURN AROUND BRICK
3	PANTRY CLOSET	EXG	32X7'-0" VIF	15-LITE FRENCH	X	REVERSE SWING, RE-USE DOOR AND HARDWARE
4	BROOM CLOSET	NEW	20'X7'-0"	4-PANEL	X	STYLE SIMILAR TO ADJACENT DR 9
5	DRESSING TO BATH	NEW	28X7'-0"	4-PANEL	X	MATCH DOOR 9 CLOSELY-SEE ELEV'S
6	DRESSING RM CLOSET	EXG	28X7'-0"	4-PANEL	X	SALVAGE FROM KIT-BROOM CLOSET?
7	DRESSING TO GUEST BR	NEW	34X7'-0"+/- VIF	8-OR 10-LITE FRENCH	X	COST SAVING ALTERNATE: NO DOOR; KEEP EXISTING HEAVY CURTAIN
8	GUEST BR TO SITTING	NEW	7'-9"x8'-2.5"	DOUBLE 8' FRENCH DOORS WITH 14"x 8' SIDE LITES	X	POCKET?
9	R. HALL TO BATH	EXG	34'X7'-0" VIF	4-PANEL	X	X
10	R. HALL TO FRONT HALL	EXG	32'X7'-0" VIF	4-PANEL	X	X
11	GUEST BR TO REAR HALL	EXG	33'X7'-0" VIF	5-PANEL	X	X

GENERAL NOTE:
 ALL WORK ON THIS PROJECT SHALL BE CONSISTENT WITH GOOD CONSTRUCTION PRACTICE AND SHALL CONFORM TO ALL APPLICABLE CODES AND REGULATIONS, INCLUDING BUT NOT LIMITED TO THE FOLLOWING:
 MAINE UNIFORM BUILDING AND ENERGY CODE
 PORTLAND CITY CODE INCLUDING CHAPTER 10-FIRE PREVENTION AND PROTECTION (INCL. NFPA 1 FIRE CODE AND NFPA 101, LIFE SAFETY CODE)
 INTERNATIONAL RESIDENTIAL CODE 2009



Key Plan
 Not to scale
 Elizabeth Newman
 Architect

32 Sawyer Street
 Portland Maine 04103
 w.207.899.1845 c.207.6215.6564
 newman.liz@gmail.com

Mateosian
 Family Home
 143 Spring Street
 Portland, Maine 04101
 Drawing Title

First Floor Plan
 Scale AS NOTED
 Date APRIL 30, 2013
 Project No. 12.09
 Drawing No.

A4