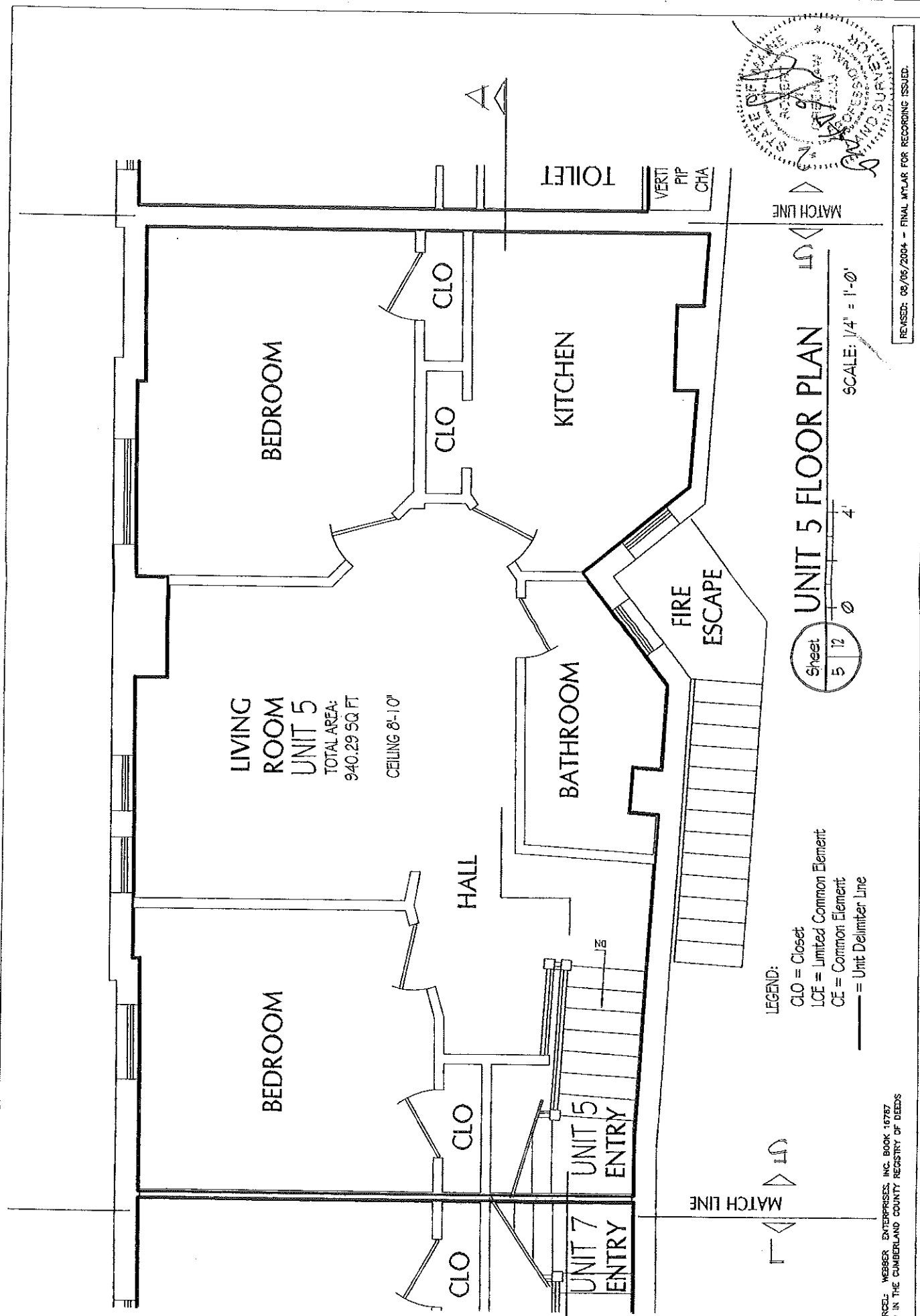


BACK BAY BOUNDARY & LAND SURVEYING  
 68 WINDSOR STREET  
 PORTLAND, ME 04103  
 207.774.2385  
 fax 207.774.2310  
 www.backbayboundary.com

© COP-VRIGHT  
 This drawing is the property of  
 Back Bay Boundary & Land  
 Surveying, Inc. All rights reserved.  
 BOUNDARY, INC.

PARK SPRING CONDOMINIUM  
 FOR WEBBER ENTERPRISES, INC.  
 137 SPRING STREET  
 PORTLAND, ME 04103

JOB: 2004024  
 DRAWN: GSB  
 FINAL: 08/06/2004



LIVING ROOM  
 UNIT 5  
 TOTAL AREA:  
 940.29 SQ. FT.  
 CEILING 8'-10"

LEGEND:  
 CLO = Closet  
 LCE = Limited Common Element  
 CE = Common Element  
 — = Unit Delimiter Line

UNIT 5 FLOOR PLAN  
 Sheet 5 of 12  
 SCALE: 1/4" = 1'-0"

REVISID: 08/06/2004 - FINAL M.T.A.R. FOR RECORDING ISSUED.

PARCEL: WEBBER ENTERPRISES, INC. BOOK 16787  
 RECORDED IN THE CUMBERLAND COUNTY REGISTRY OF DEEDS