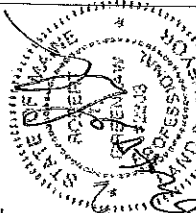
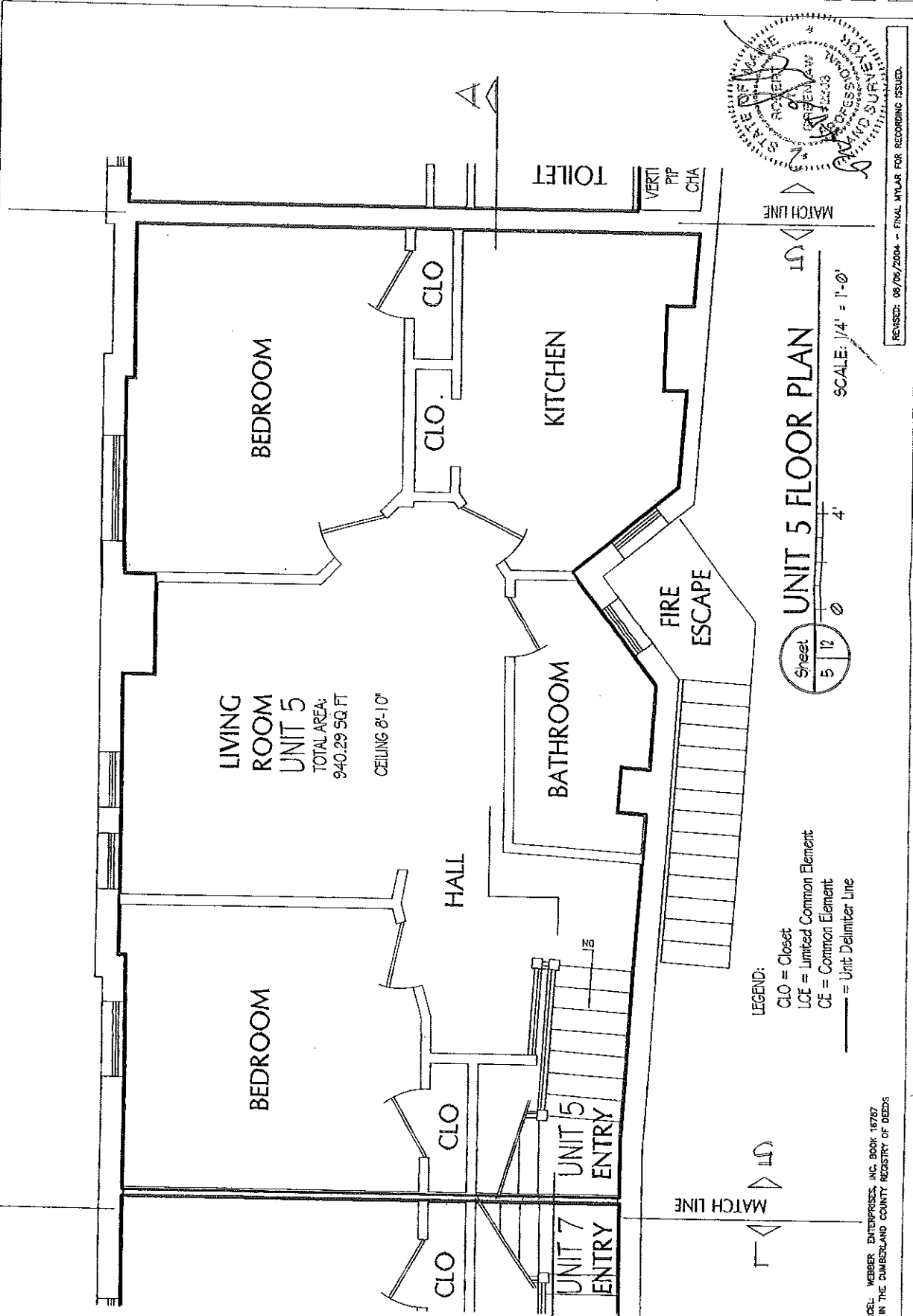


FOR WEBBER ENTERPRISES, INC.
 137 SPRING STREET,
 PARK SPRING CONDOMINIUM

DATE: 2/20/04

SCALE: 1/4" = 1'-0"



MATCH LINE

UNIT 5 FLOOR PLAN

Sheet 5 of 12
 SCALE: 1/4" = 1'-0"

LEGEND:
 CLO = Closet
 LCE = Limited Common Element
 CE = Common Element
 — = Unit Delimiter Line

REVISED: 06/05/2004 - FINAL AT/LAR FOR RECORDING ISSUED.

ARCEL: WEBBER ENTERPRISES, INC. BOOK 16767
 20 IN THE CUMBERLAND COUNTY REGISTRY OF DEEDS