

OPERATIONS MATRIX	FIRE ALARM INPUT	ACTIVATE ALARM INDICATOR	ACTIVATE ALARM	ACTIVATE SUPERVISORY INDICATOR	ACTIVATE AUDIBLE SUPERVISORY SIGNAL	ACTIVATE TROUBLE INDICATOR	ACTIVATE AUDIBLE TROUBLE INDICATOR	ACTIVATE ALARM SIGNAL	TRANSMIT SUPERVISORY SIGNAL	TRANSMIT TROUBLE SIGNAL	ACTIVATE NOTIFICATION APPLIANCES
FIRE ALARM INPUT	●	●	●	●	●	●	●	●	●	●	●
SYSTEM SMOKE DETECTORS & CO DETECTORS	●	●	●	●	●	●	●	●	●	●	●
PULL STATIONS	●	●	●	●	●	●	●	●	●	●	●
WATERFLOW SWITCHES	●	●	●	●	●	●	●	●	●	●	●
VALVE TAMPER SWITCHES	●	●	●	●	●	●	●	●	●	●	●
FIRE ALARM AC POWER FAIL	●	●	●	●	●	●	●	●	●	●	●
FIRE ALARM LOW BATTERY	●	●	●	●	●	●	●	●	●	●	●
OPEN CIRCUIT	●	●	●	●	●	●	●	●	●	●	●
GROUND FAULT	●	●	●	●	●	●	●	●	●	●	●
MAC SHORT CIRCUIT	●	●	●	●	●	●	●	●	●	●	●
LOSS OF AC TO BUILDING	●	●	●	●	●	●	●	●	●	●	●

SYMBOL	DESCRIPTION	MOUNTING
LEP	FIRE ALARM CONTROL PANEL	WALL-TOP @ 66"
FPS	FIRE ALARM POWER SUPPLY	FIELD VERIFY
FSA	FIRE SYSTEM ANNUNCIATOR	WALL-TOP @ 66"
⊙	CARBON MONOXIDE DETECTOR	CEILING
⊙	SMOKE DETECTOR	CEILING
⊙	HEAT DETECTOR	FIELD VERIFY
AM	ADDRESSABLE MONITOR MODULE	FIELD VERIFY
P	MANUAL PULL STATION	WALL @ 48"
⊗	HORN / STROBE	WALL 80"-96"
⊗	STROBE	WALL 80"-96"

ABBREVIATION	DESCRIPTION
E	EXISTING
G	WITH GUARD
P	PENDENT MOUNT
R	RESIDENTIAL (TDM)
S	SLINDER BASE
WP	WEATHER PROOF
EOL	END OF LINE RESISTOR
EOLR	END OF LINE REDAY
FPLR	AMERICAN WIRE GAUGE
TWSP	TWISTED SHIELDED PAIR
FPLP	FIRE POWER LIMITED PLENUM
FPLR	FIRE POWER LIMITED RISER

REVISION	DESCRIPTION	DATE
0	ISSUED FOR REVIEW & APPROVAL	3/12/2016

SEACOAST SECURITY  
 4 Summer Street • Freeport, Maine 04032  
 Office: (207) 706-3369 • Fax: (207) 865-0852

**GENERAL NOTES:**

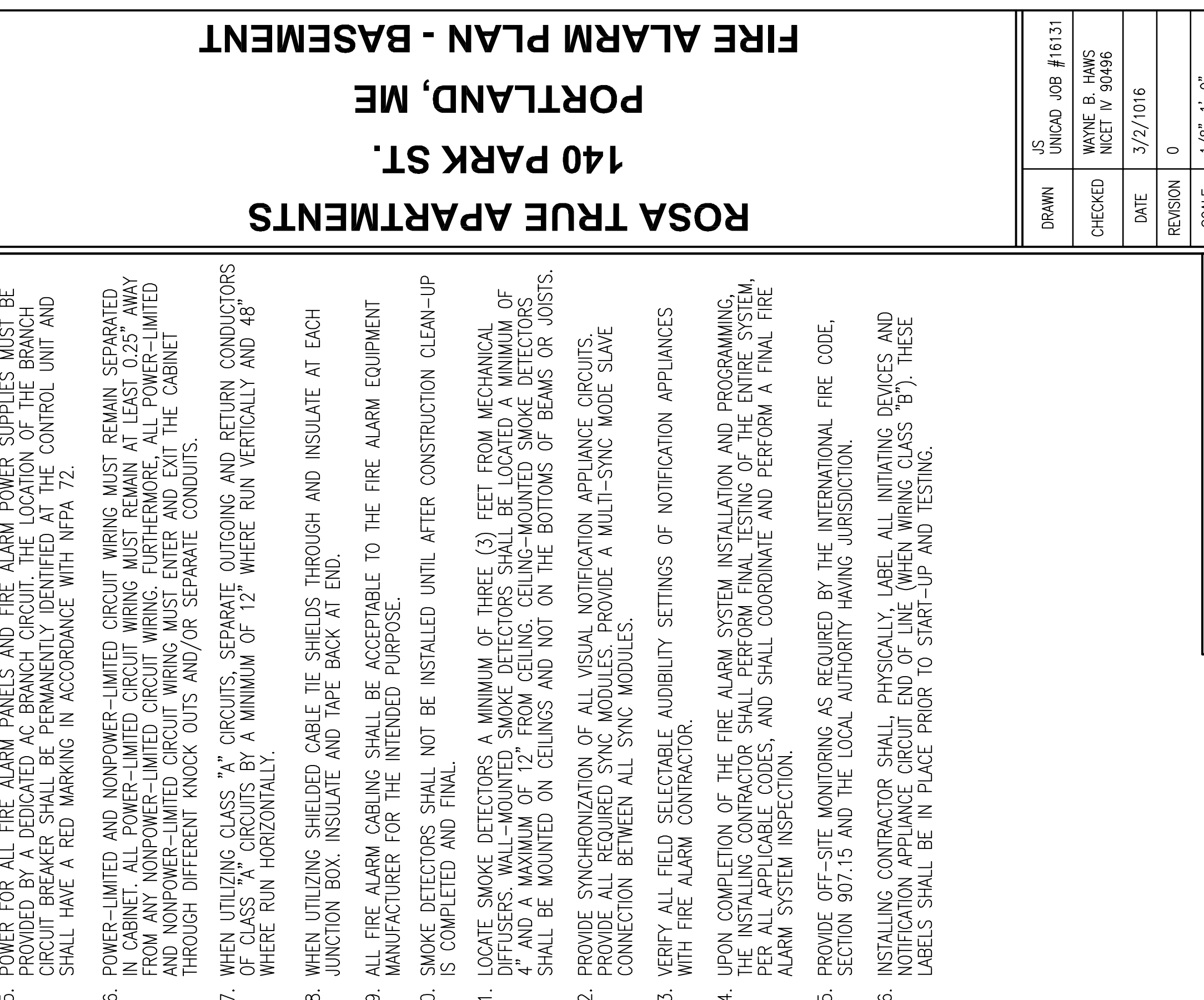
- THESE DRAWINGS ARE DIAGRAMMATIC. REFER TO THE ARCHITECTURAL DRAWINGS FOR EXACT DIMENSIONS.
- INSTALLATION SHALL COMPLY WITH NEC, NFPA 72 AND ALL OTHER APPLICABLE CODES AS REQUIRED BY THE LOCAL AUTHORITY HAVING JURISDICTION.
- WIRING DEPICTED ON THESE PLANS IS SCHEMATIC - ACTUAL WIRE LOCATIONS MAY DIFFER FROM THESE PLANS. WIRING SHALL BE PERFORMED AS ACTUAL BUILDING CONSTRUCTION CONDITIONS ALLOW AND TO MINIMIZE PENETRATIONS THROUGH AREA SEPARATION WALLS AND FIRE WALLS. THE USE OF A RACEWAY IS PERMITTED AS LONG AS NO 110V OR HIGHER VOLTAGE CABLES ARE IN THE SAME RACEWAY.
- FIRE RATINGS SHALL BE MAINTAINED FOR ALL PENETRATIONS THROUGH FIRE-RATED CONSTRUCTION.
- POWER FOR ALL FIRE ALARM PANELS AND FIRE ALARM POWER SUPPLIES MUST BE PROVIDED BY A DEDICATED AC BRANCH CIRCUIT. THE LOCATION OF THE BRANCH CIRCUIT BREAKER SHALL BE PERMANENTLY IDENTIFIED AT THE CONTROL UNIT AND SHALL HAVE A RED MARKING IN ACCORDANCE WITH NFPA 72.
- POWER-LIMITED AND NONPOWER-LIMITED CIRCUIT WIRING MUST REMAIN SEPARATED IN CABINET. ALL POWER-LIMITED CIRCUIT WIRING MUST REMAIN AT LEAST 0.25" AWAY FROM ANY NONPOWER-LIMITED CIRCUIT WIRING. FURTHERMORE, ALL POWER-LIMITED AND NONPOWER-LIMITED CIRCUIT WIRING MUST ENTER AND EXIT THE CABINET THROUGH DIFFERENT KNOCK OUTS AND/OR SEPARATE CONDUITS.
- WHEN UTILIZING CLASS "A" CIRCUITS, SEPARATE OUTGOING AND RETURN CONDUCTORS OF CLASS "A" CIRCUITS BY A MINIMUM OF 12" WHERE RUN VERTICALLY AND 48" WHERE RUN HORIZONTALLY.
- WHEN UTILIZING SHIELDED CABLE, TIE SHIELDS THROUGH AND INSULATE AT EACH JUNCTION BOX. INSULATE AND TAPE BACK AT END.
- ALL FIRE ALARM CABLING SHALL BE ACCEPTABLE TO THE FIRE ALARM EQUIPMENT MANUFACTURER FOR THE INTENDED PURPOSE.
- SMOKE DETECTORS SHALL NOT BE INSTALLED UNTIL AFTER CONSTRUCTION CLEAN-UP IS COMPLETED AND FINAL.
- LOCATE SMOKE DETECTORS A MINIMUM OF THREE (3) FEET FROM MECHANICAL DIFFUSERS, WALL-MOUNTED SMOKE DETECTORS SHALL BE LOCATED A MINIMUM OF 4" AND A MAXIMUM OF 12" FROM CEILING. CEILING-MOUNTED SMOKE DETECTORS SHALL BE MOUNTED ON CEILINGS AND NOT ON THE BOTTOMS OF BEAMS OR JOISTS.
- PROVIDE SYNCHRONIZATION OF ALL VISUAL NOTIFICATION APPLIANCE CIRCUITS. PROVIDE ALL REQUIRED SYNC MODULES. PROVIDE A MULTI-SYNC MODE SLAVE CONNECTION BETWEEN ALL SYNC MODULES.
- VERIFY ALL FIELD SELECTABLE AUDIBILITY SETTINGS OF NOTIFICATION APPLIANCES WITH FIRE ALARM CONTRACTOR.
- UPON COMPLETION OF THE FIRE ALARM SYSTEM INSTALLATION AND PROGRAMMING, THE INSTALLING CONTRACTOR SHALL PERFORM FINAL TESTING OF THE ENTIRE SYSTEM, PER ALL APPLICABLE CODES, AND SHALL COORDINATE AND PERFORM A FINAL FIRE ALARM SYSTEM INSPECTION.
- PROVIDE OFF-SITE MONITORING AS REQUIRED BY THE INTERNATIONAL FIRE CODE, SECTION 907.15 AND THE LOCAL AUTHORITY HAVING JURISDICTION.
- INSTALLING CONTRACTOR SHALL, PHYSICALLY, LABEL ALL INITIATING DEVICES AND NOTIFICATION APPLIANCE CIRCUIT END OF LINE (WHEN WIRING CLASS "B"). THESE LABELS SHALL BE IN PLACE PRIOR TO START-UP AND TESTING.

**ELECTRICAL NOTES:**

- THE FIRE ALARM SYSTEM DESIGN HAS BEEN PREPARED BASED ON AGREEMENTS REACHED AT A MEETING WITH THE CITY OF PORTLAND FIRE DEPARTMENT HELD ON JUNE 25, 2015.

**SHEET NOTES:**

- REPLACE EXISTING DEVICE WITH NEW AND REUSE EXISTING WIRING IF COMPATIBLE WITH NEW DEVICE AND MEETS ALL NFPA CODE REQUIREMENTS FOR CLASS "B" CIRCUIT WIRING.
- SLC CKT, CONTINUE TO ALL NEW ADDRESSABLE INITIATING DEVICES. SPLICE INTO EXISTING WIRING IF WIRE MEETS ALL MANUFACTURERS REQUIREMENTS FOR ADDRESSABLE DEVICES.



**OPERATIONS MATRIX**

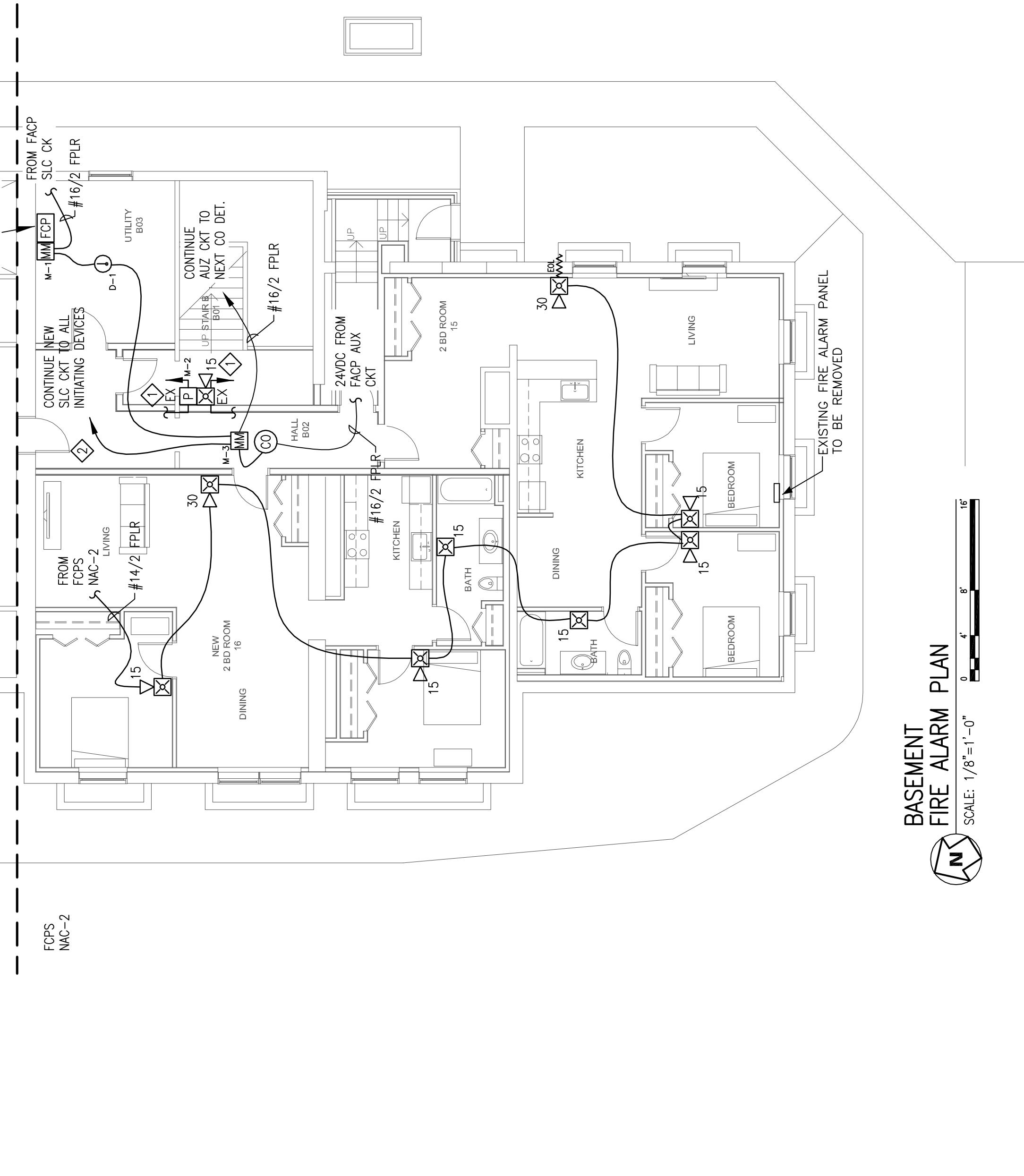
OPERATIONS MATRIX	FIRE ALARM INPUT	ACTIVATE ALARM INDICATOR	ACTIVATE ALARM	ACTIVATE SUPERVISORY INDICATOR	ACTIVATE AUDIBLE SUPERVISORY SIGNAL	ACTIVATE TROUBLE INDICATOR	ACTIVATE AUDIBLE TROUBLE INDICATOR	ACTIVATE ALARM SIGNAL	TRANSMIT SUPERVISORY SIGNAL	TRANSMIT TROUBLE SIGNAL	ACTIVATE NOTIFICATION APPLIANCES
FIRE ALARM INPUT	●	●	●	●	●	●	●	●	●	●	●
SYSTEM SMOKE DETECTORS & CO DETECTORS	●	●	●	●	●	●	●	●	●	●	●
PULL STATIONS	●	●	●	●	●	●	●	●	●	●	●
WATERFLOW SWITCHES	●	●	●	●	●	●	●	●	●	●	●
VALVE TAMPER SWITCHES	●	●	●	●	●	●	●	●	●	●	●
FIRE ALARM AC POWER FAIL	●	●	●	●	●	●	●	●	●	●	●
FIRE ALARM LOW BATTERY	●	●	●	●	●	●	●	●	●	●	●
OPEN CIRCUIT	●	●	●	●	●	●	●	●	●	●	●
GROUND FAULT	●	●	●	●	●	●	●	●	●	●	●
MAC SHORT CIRCUIT	●	●	●	●	●	●	●	●	●	●	●
LOSS OF AC TO BUILDING	●	●	●	●	●	●	●	●	●	●	●

**ELECTRICAL NOTES:**

- THE FIRE ALARM SYSTEM DESIGN HAS BEEN PREPARED BASED ON AGREEMENTS REACHED AT A MEETING WITH THE CITY OF PORTLAND FIRE DEPARTMENT HELD ON JUNE 25, 2015.

**SHEET NOTES:**

- REPLACE EXISTING DEVICE WITH NEW AND REUSE EXISTING WIRING IF COMPATIBLE WITH NEW DEVICE AND MEETS ALL NFPA CODE REQUIREMENTS FOR CLASS "B" CIRCUIT WIRING.
- SLC CKT, CONTINUE TO ALL NEW ADDRESSABLE INITIATING DEVICES. SPLICE INTO EXISTING WIRING IF WIRE MEETS ALL MANUFACTURERS REQUIREMENTS FOR ADDRESSABLE DEVICES.



**BASEMENT FIRE ALARM PLAN**  
 SCALE: 1/8"=1'-0"

**FIRE ALARM PLAN - BASEMENT**  
 PORTLAND, ME  
 140 PARK ST.  
 ROSA TRUE APARTMENTS

DRAWN	JS	UNICAD JOB #16131
CHECKED	WAYNE B HAWES	NCET IV 90496
DATE	3/2/2016	
REVISION	0	
SCALE	1/8"=1'-0"	

UNICAD Inc.  
 5784 W. 40TH St.  
 Suite 100  
 Portland, ME 04106  
 Phone: (207) 865-0410  
 www.unicad.net  
 Fire Alarm Design & Drafting Services