

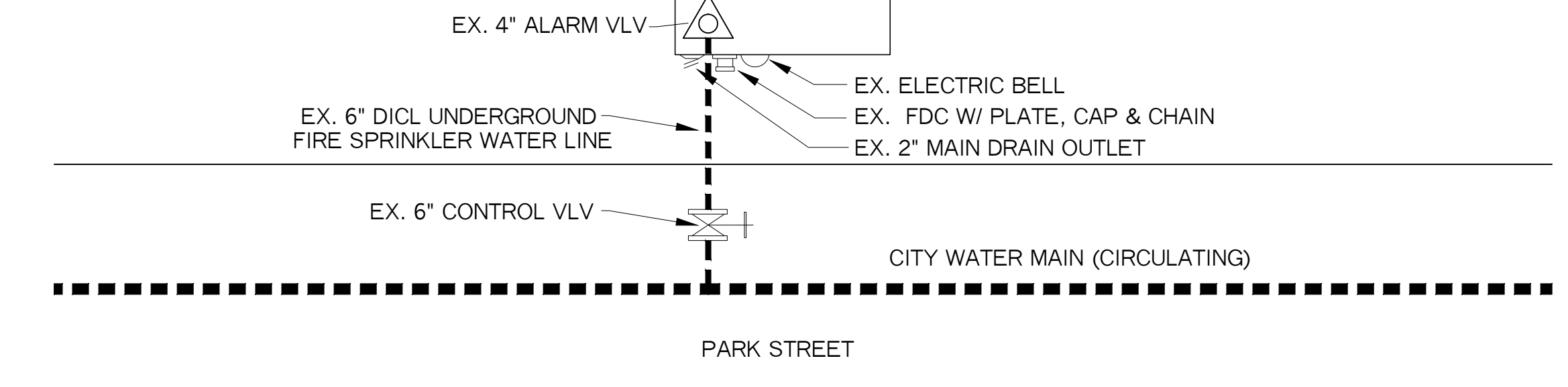
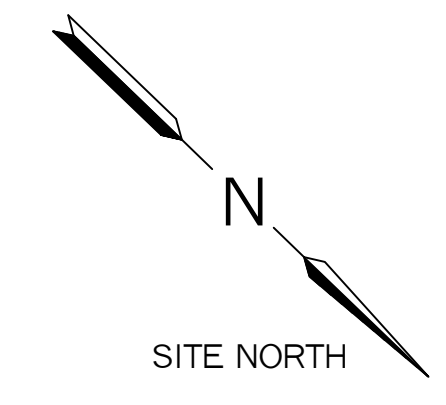
HYDRAULIC NOTE:  
100'-0" OF 4" SCH'D 40 PIPE FROM REF PT "20"  
TO REF PT "TOR" WITH (4) ELBOWS.

HYDRAULIC NOTE:  
100'-0" OF 4" SCH'D 40 PIPE FROM REF PT "20"  
TO REF PT "TOR" WITH (4) ELBOWS.

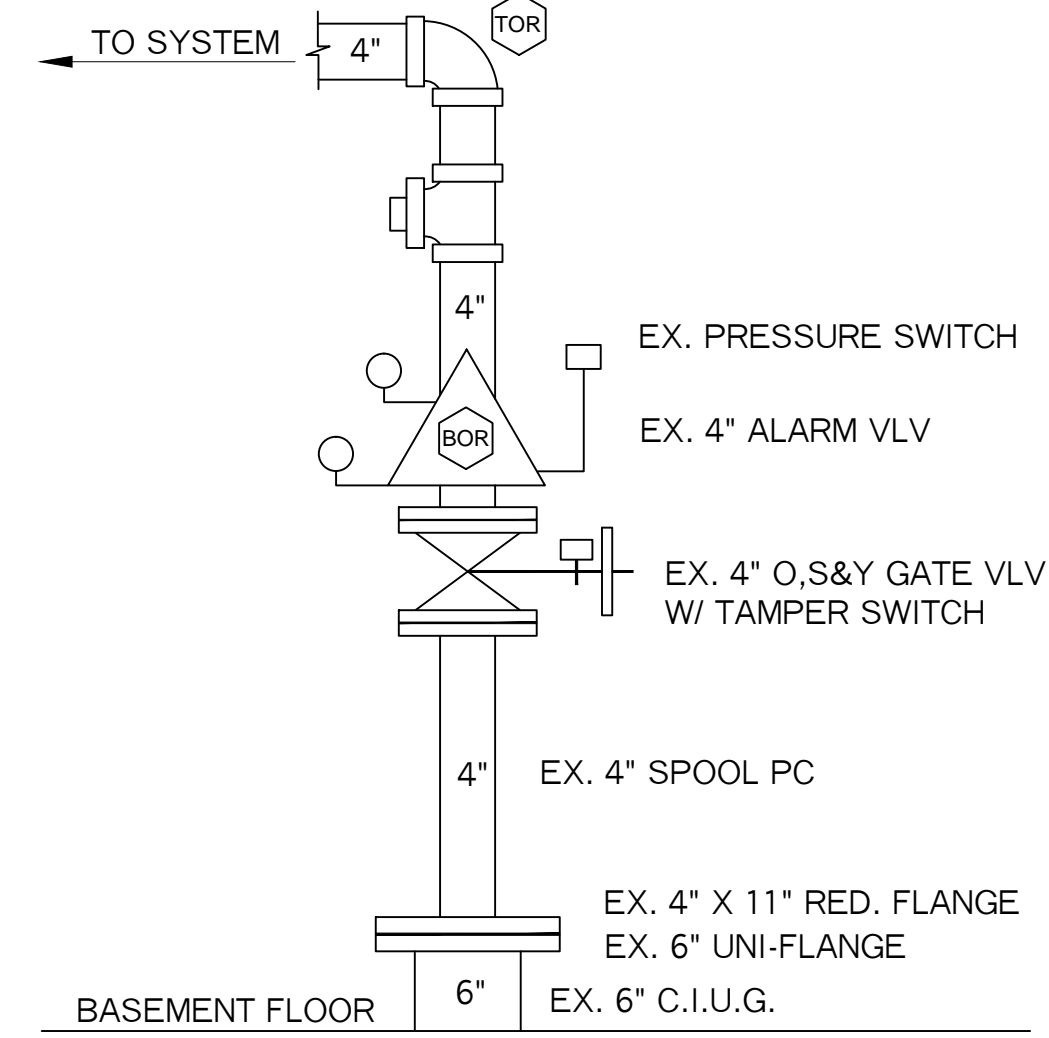
**WATER SUPPLY DATA**

STATIC = 70 PSI  
RESIDUAL = 58 PSI  
FLOW = 420 GPM (MAIN DRAIN TEST)  
(TEST DATE: 9-21-15)  
LOCATION = EX. 4" ALARM VLV RISER  
SOURCE = INSPECTION TAG

ROSA TRUE APT.  
140 PARK ST.

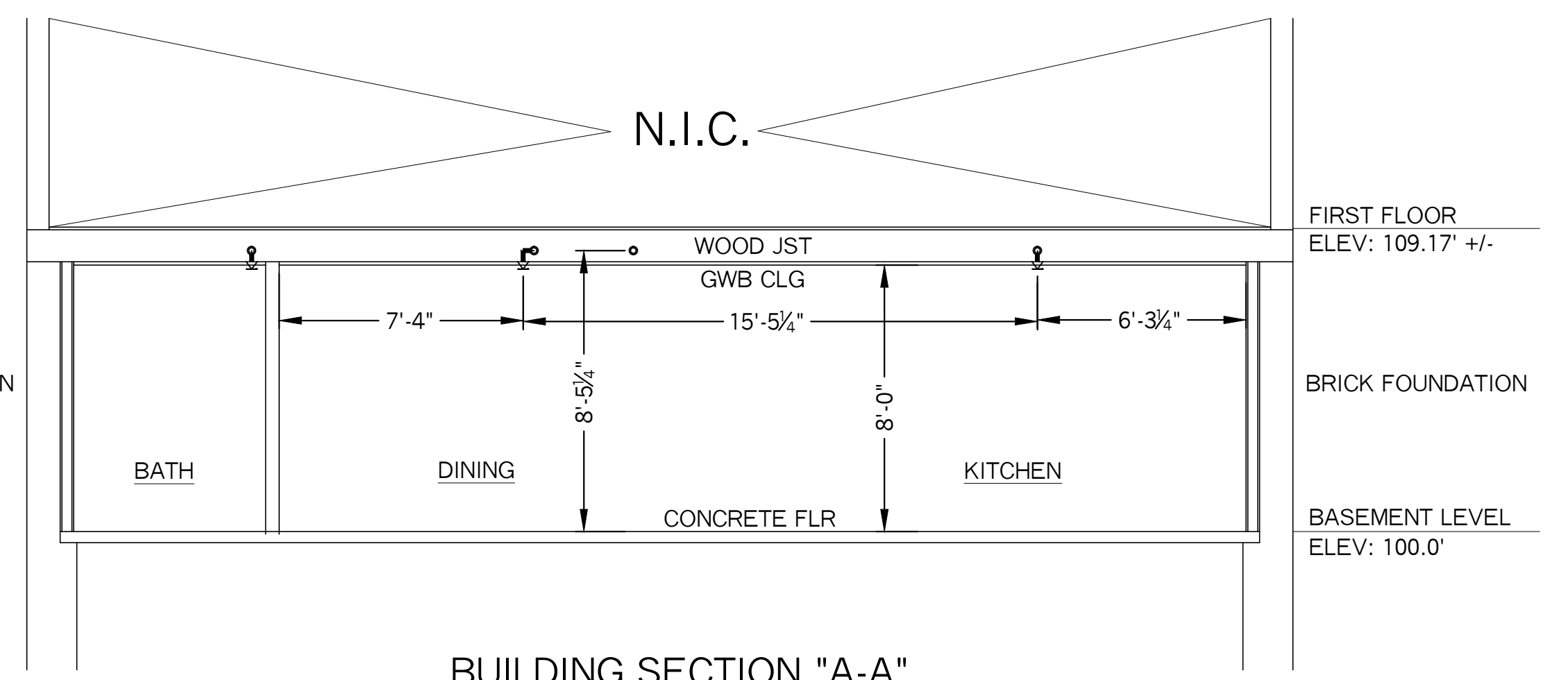


**PLOT / SITE PLAN**  
SCALE: NTS



**EXISTING RISER DETAIL**  
SCALE: N.T.S.

NOTE:  
EXISTING 4" ALARM VALVE RISER TO REMAIN AS IS.



**BUILDING SECTION "A-A"**  
SCALE: 1/4" = 1'-0"

**SYSTEM GENERAL NOTES:**

- A WET PIPE SYSTEM OF AUTOMATIC SPRINKLERS TO BE DESIGNED AND INSTALLED PER NFPA 13 (2007 EDITION)
- ALL SPRINKLERS TO BE BASED ON LIGHT HAZARD OCCUPANCY
- REMOVE EXISTING PIPING, IN THE RENOVATED AREA OF THE BASEMENT ONLY, AND REINSTALL NEW PIPE DESIGNED TO THE NEW FLOOR PLAN.
- CLOSETS LESS THAN 12 SQ FT SHALL NOT RECEIVE SPRINKLER PROTECTION PER NFPA 13 (2007 EDITION).
- LINE PIPING TO BE SCHEDULE 40 BLACK STEEL WITH THREADED C.I. FITTINGS.
- MAIN PIPING TO BE SCHEDULE 10 BLACK STEEL WITH GROOVED FITTINGS.

**SPRINKLER HEAD INFORMATION**

QTY	SIZE	ORIFICE	K-FACTOR	DESCRIPTION	MODEL	TEMP	ESCUTCHEON	SYMBOL
20	1/2"	7/16"	4.9	VIKING FREEDOM WHITE PENDENT	VK468	155	RECESSED	☉
5	1/2"	1/2"	5.6	VIKING "QR" BRASS UPRIGHT	VK300	155	NONE	○

HYDRAULIC CALCULATION INFORMATION	
LOCATION:	BASEMENT RENOVATED AREA
BASIS OF DESIGN:	NFPA 13, 2007 EDITION
DENSITY - AREA OF COVERAGE	.1 946 SQ FT
OCCUPANCY:	APARTMENTS (RESIDENTIAL)
SPRINKLERS:	TOTAL THREAD TEMP 8 1/2" 155
SYSTEM DEMAND AT BASE OF RISER:	PRESSURE FLOW HOSE 58.39 187.12 0
SAFETY MARGIN:	5.4 PSI

**SYSTEM SYMBOL LEGEND:**

- ☉ = EXISTING 1/2" BRASS UPRIGHT HEAD (K=5.6)
- = NEW VIKING "VK300" OR 1/2" BRASS UPRIGHT HEAD (K=5.6)
- ☉ = NEW VIKING RESIDENTIAL 1/2" WHITE RECESSED PENDENT HEAD (K=5.6)
- ⊕ = HYDRAULIC CALCULATION REFERENCE POINT
- = NEW PIPE
- - - = EXISTING PIPE
- N.I.C. = NOT IN CONTRACT

**BASEMENT (RENOVATED AREA ONLY)**  
SCALE: 1/4" = 1'-0"

