

Prepared For:
DEVELOPERS COLLABORATIVE
 100 COMMERCIAL STREET
 PORTLAND, ME 04101

Consulting Engineer:
MECHANICAL SYSTEMS ENGINEERS
 ROYAL RIVER CENTER, UNIT 108
 10 FOREST FALLS (201) 844-1441
 FACEBOOK: MECHANICAL SYSTEMS ENGINEERS
 © COPYRIGHT 2015

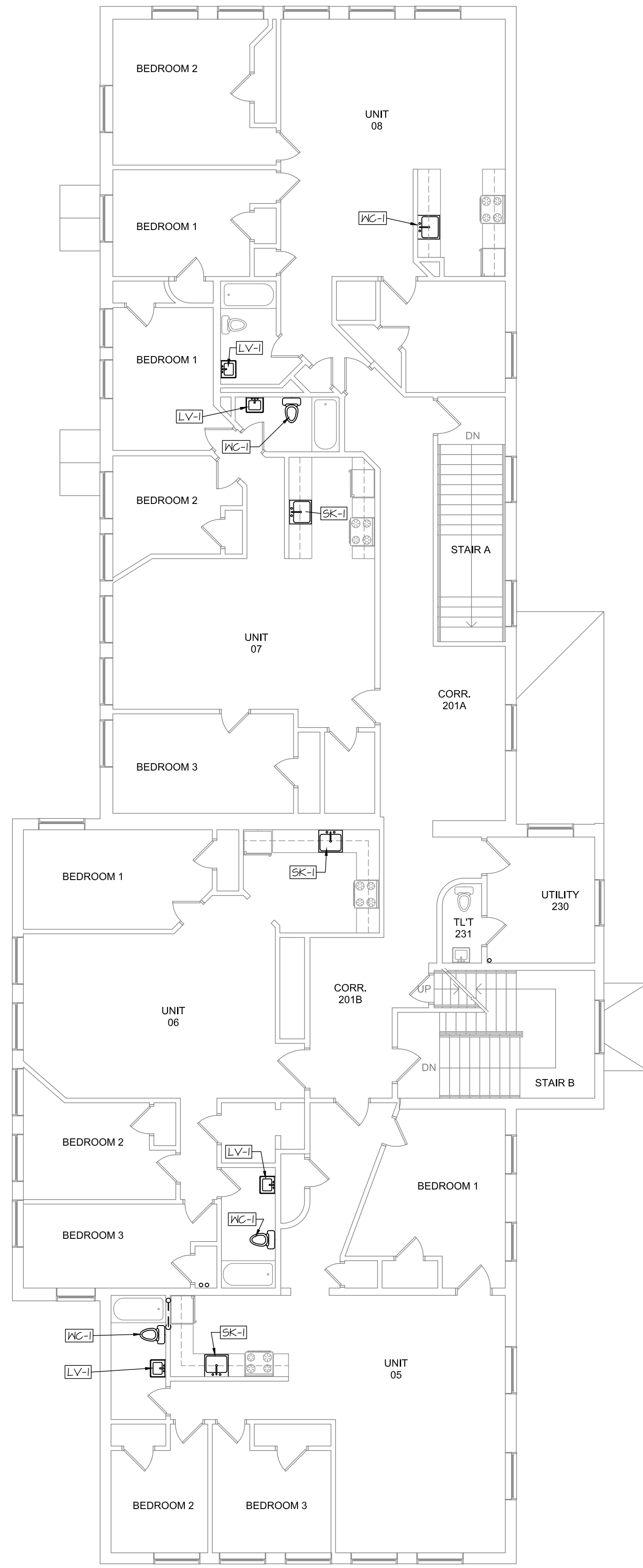
Architect:
ARCHETYPE architects
 48 Union Wharf Portland, Maine 04101
 (207) 775-6022 ARCHETYPE@ARCHETYPEDA.COM

Project:
ROSA TRUE APARTMENTS
 140 PARK STREET, PORTLAND, ME

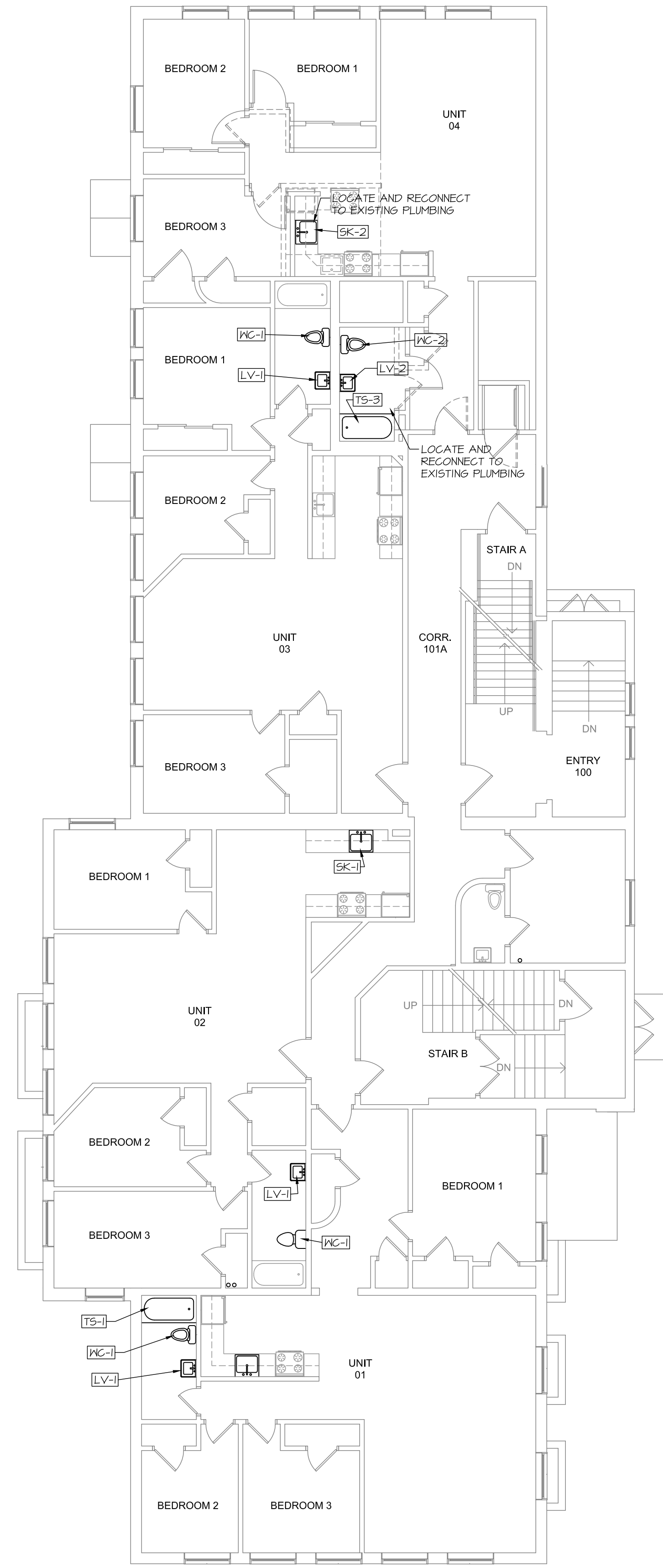
Revisions:
 Progress Print

Date: 23 JULY 2015
 Scale: 1/8" = 1'-0"

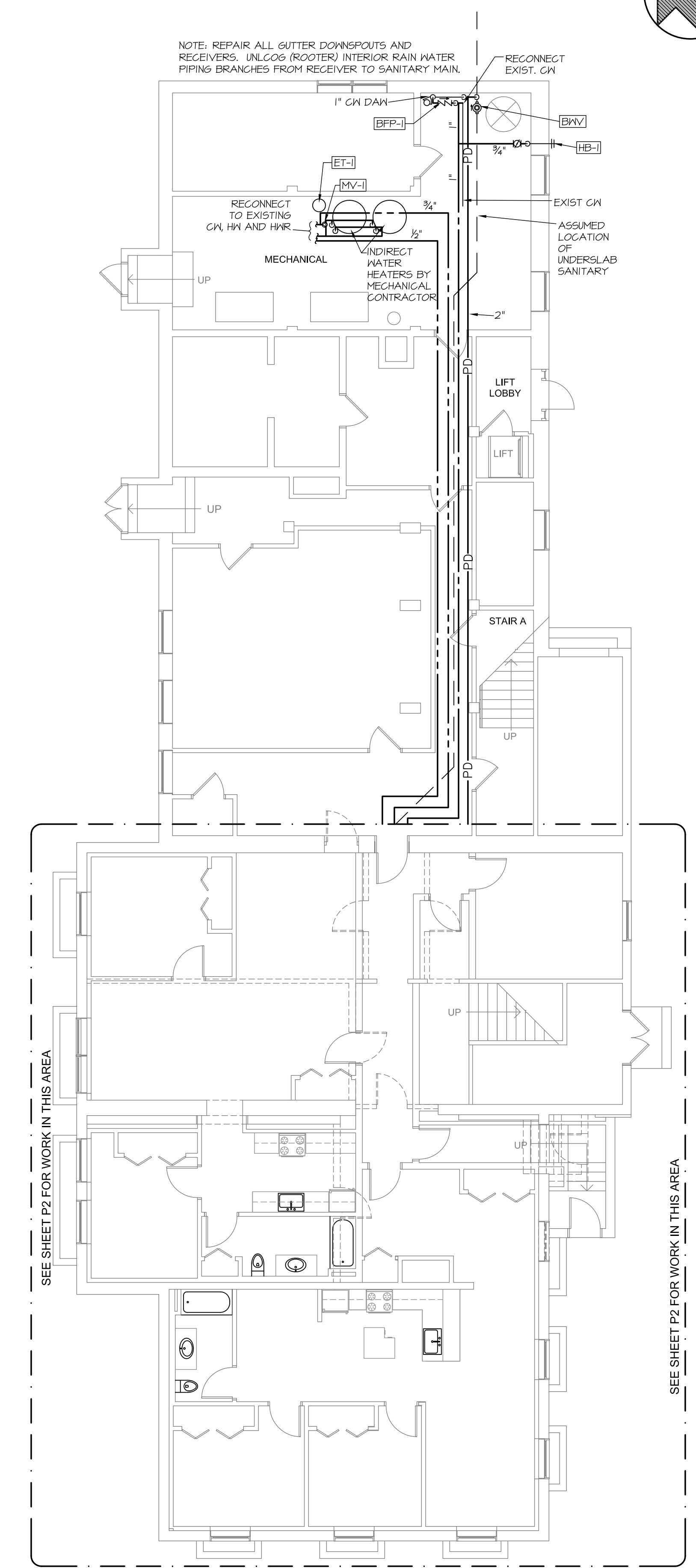
PLUMBING FLOOR PLANS
P1
 MSE PROJECT 1516



1 SECOND FLOOR PLUMBING PLAN
 SCALE: 1/8" = 1'-0"



2 FIRST FLOOR PLUMBING PLAN
 SCALE: 1/8" = 1'-0"



3 BASEMENT PLUMBING PLAN
 SCALE: 1/8" = 1'-0"

FOR PERMITTING ONLY
 NOT A CONTRACT
 DOCUMENT

