

Prepared For:
DEVELOPERS COLLABORATIVE
 100 COMMERCIAL STREET
 PORTLAND, ME 04101

Consulting Engineer:

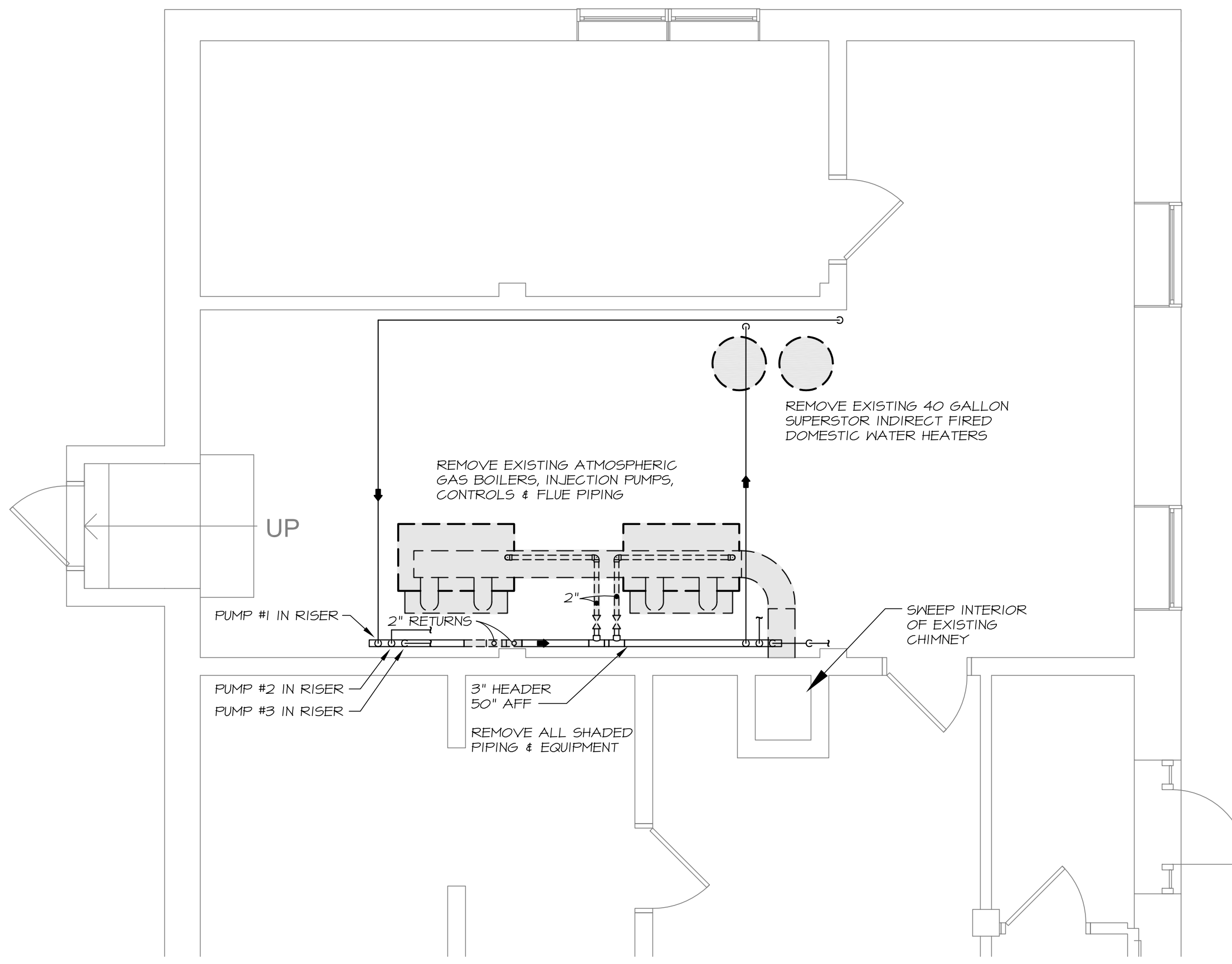
MECHANICAL SYSTEMS ENGINEERS
 ROYAL RIVER CENTER, UNIT 10B
 10 FOREST FALLS (201) 846-3441
 FACEBOOK: MECHANICAL SYSTEMS ENGINEERS
 © COPYRIGHT 2015

Architect:
ARCHETYPE architects
 48 Union Wharf Portland, Maine 04101
 (207) 773-6022 ARCHETYPE@ARCHETYPEPA.COM

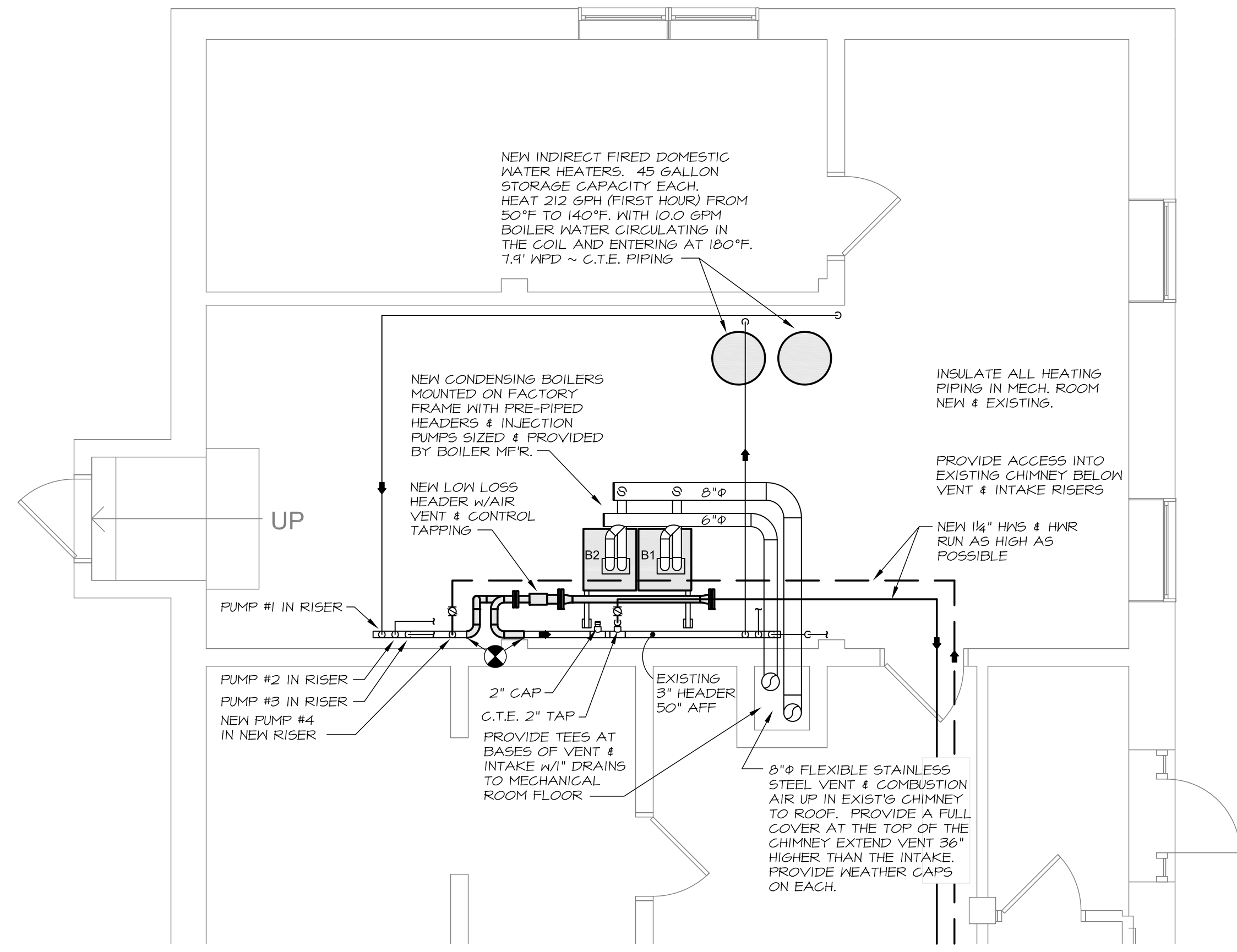
Project:
ROSA TRUE APARTMENTS
 140 PARK STREET, PORTLAND, ME

Revisions:
 Progress Print

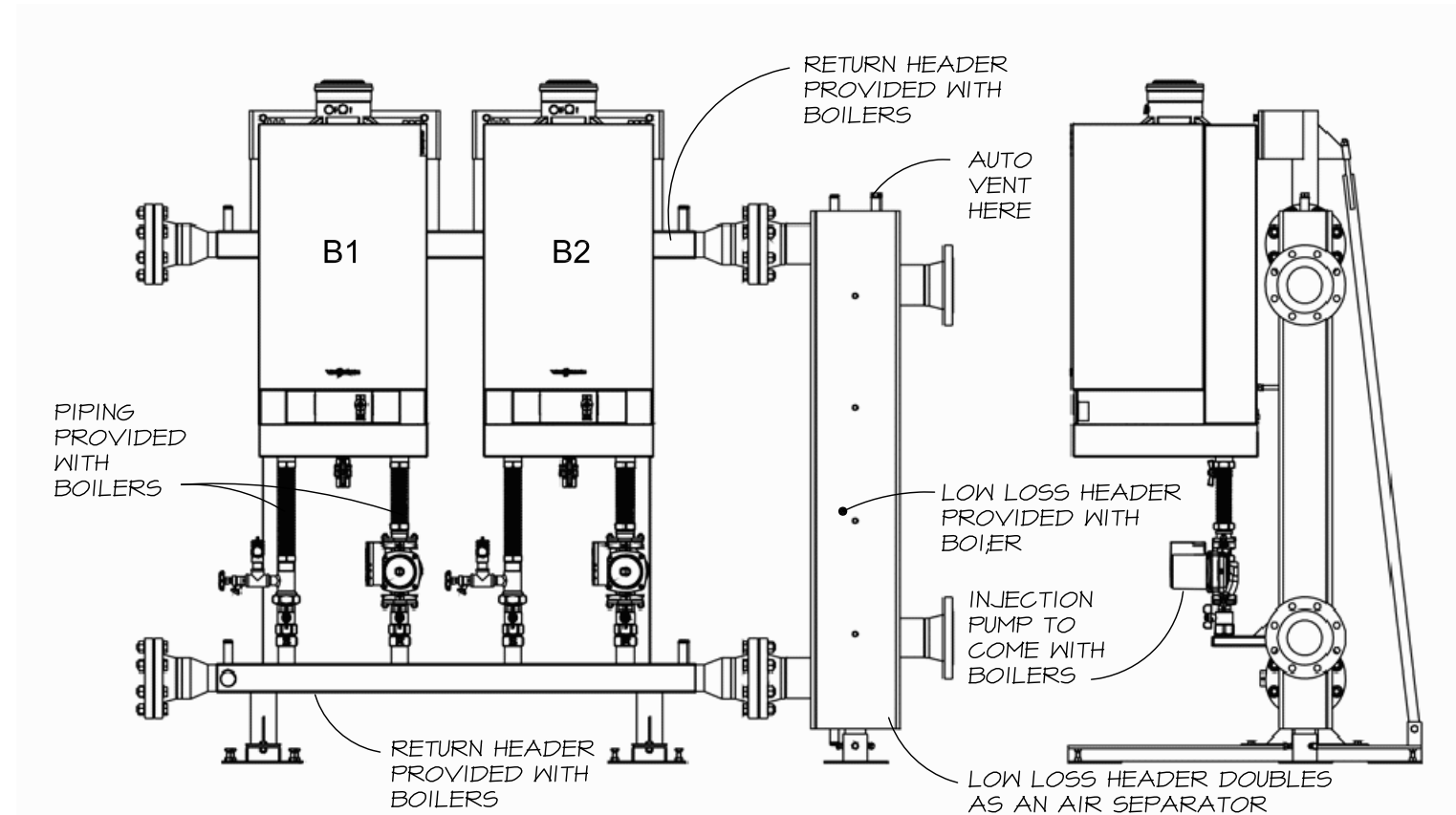
Date: 23 JULY 2015
 Scale: NOTED
MECHANICAL ROOM PLANS & DETAILS



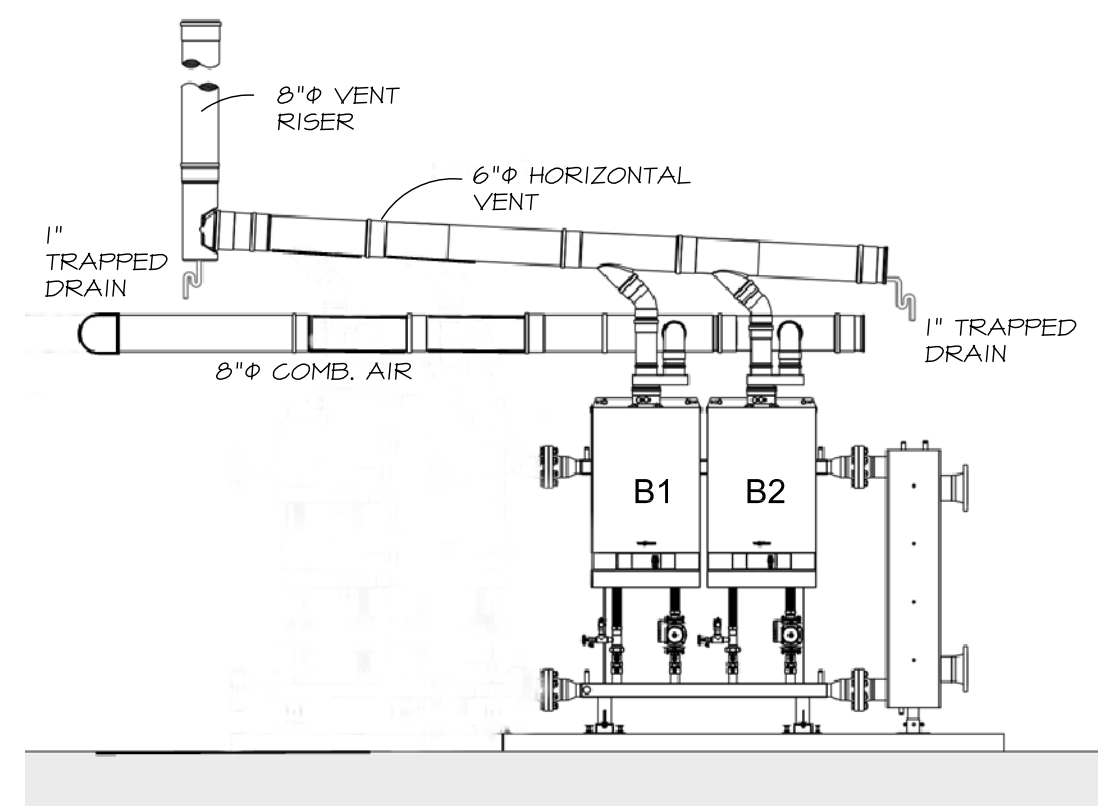
1 MECHANICAL ROOM REMOVALS
 SCALE: 1/4" = 1'-0"



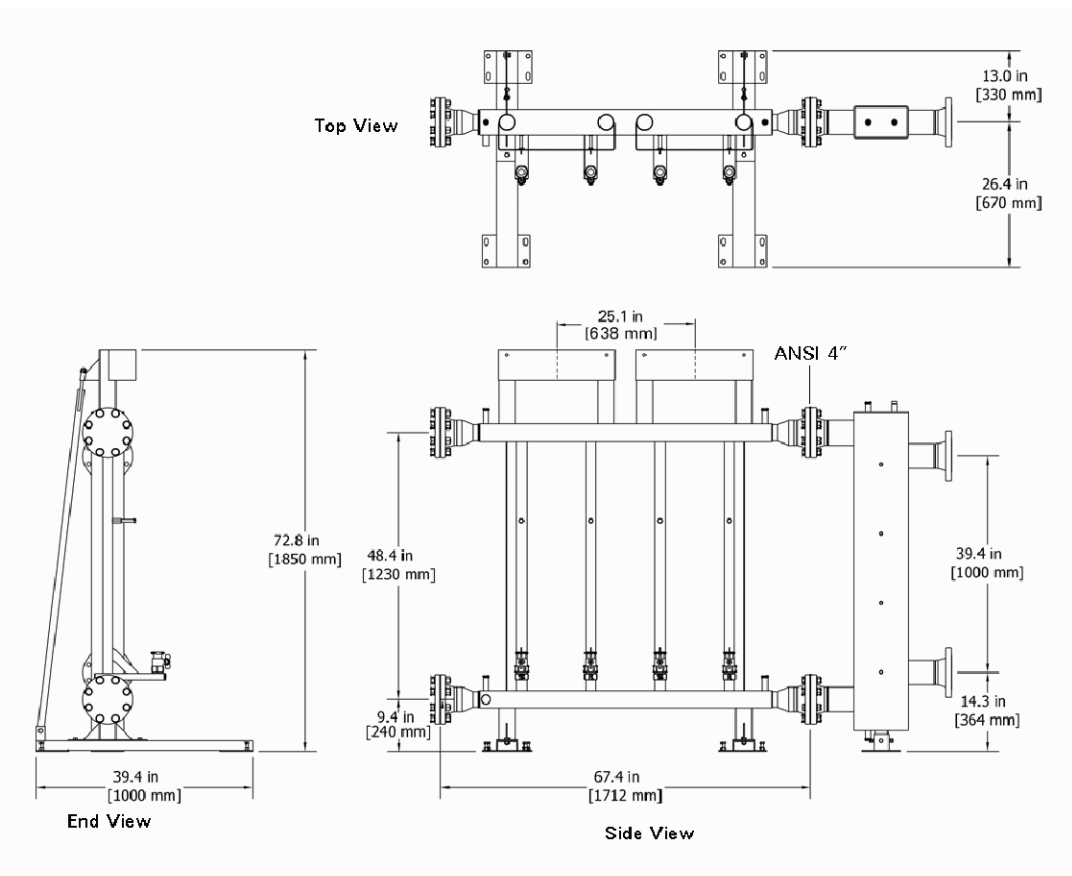
2 MECHANICAL ROOM ~ NEW WORK
 SCALE: 1/4" = 1'-0"



4 BOILER PIPING DETAIL
 NO SCALE



5 BOILER VENTING DETAIL
 NO SCALE



6 BOILER STAND DETAIL
 NO SCALE

FOR PERMITTING ONLY
 NOT A CONTRACT
 DOCUMENT



July 23, 2015 7:05 am
 \\VIBERS\Projects\1516 Rosa True Apartments\Drawings\1516 M1-M2.dwg