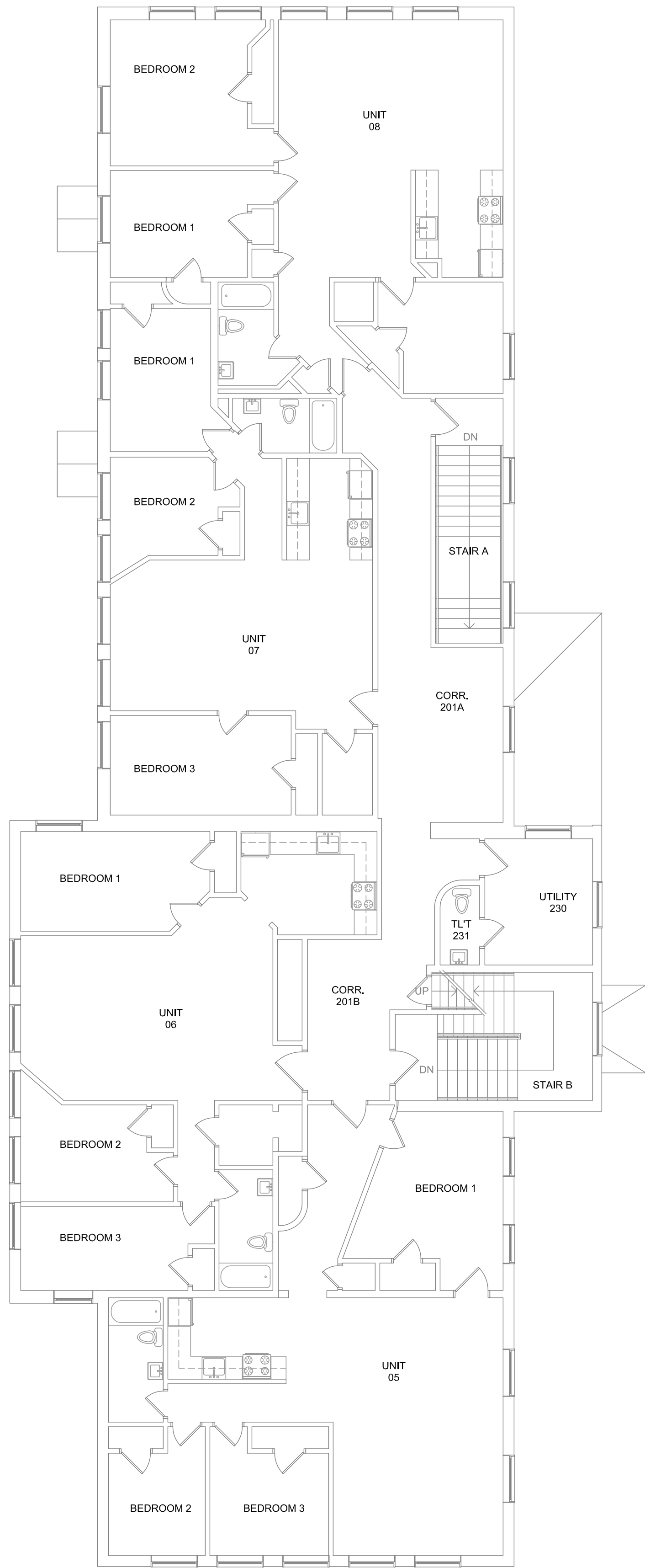
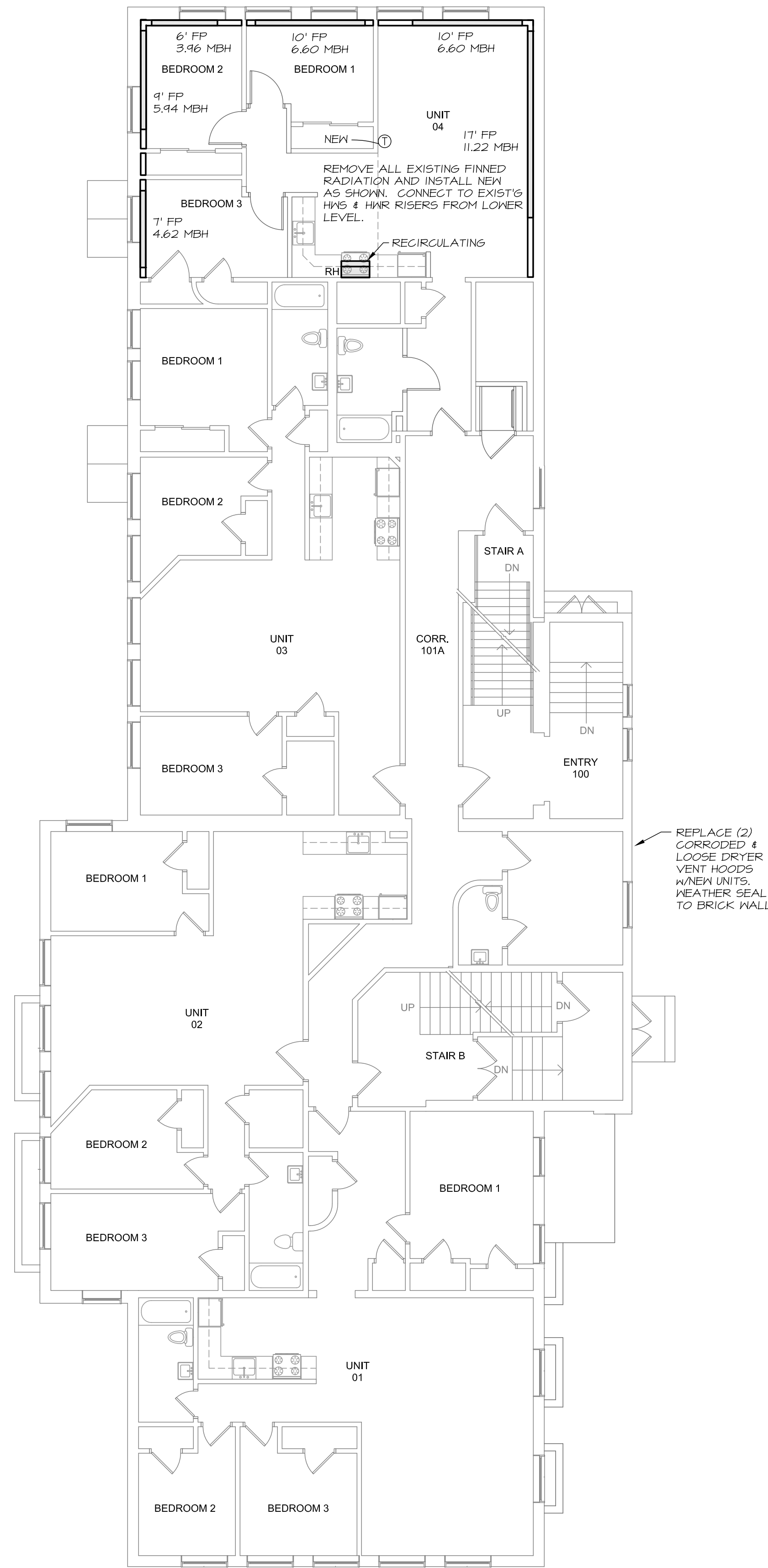


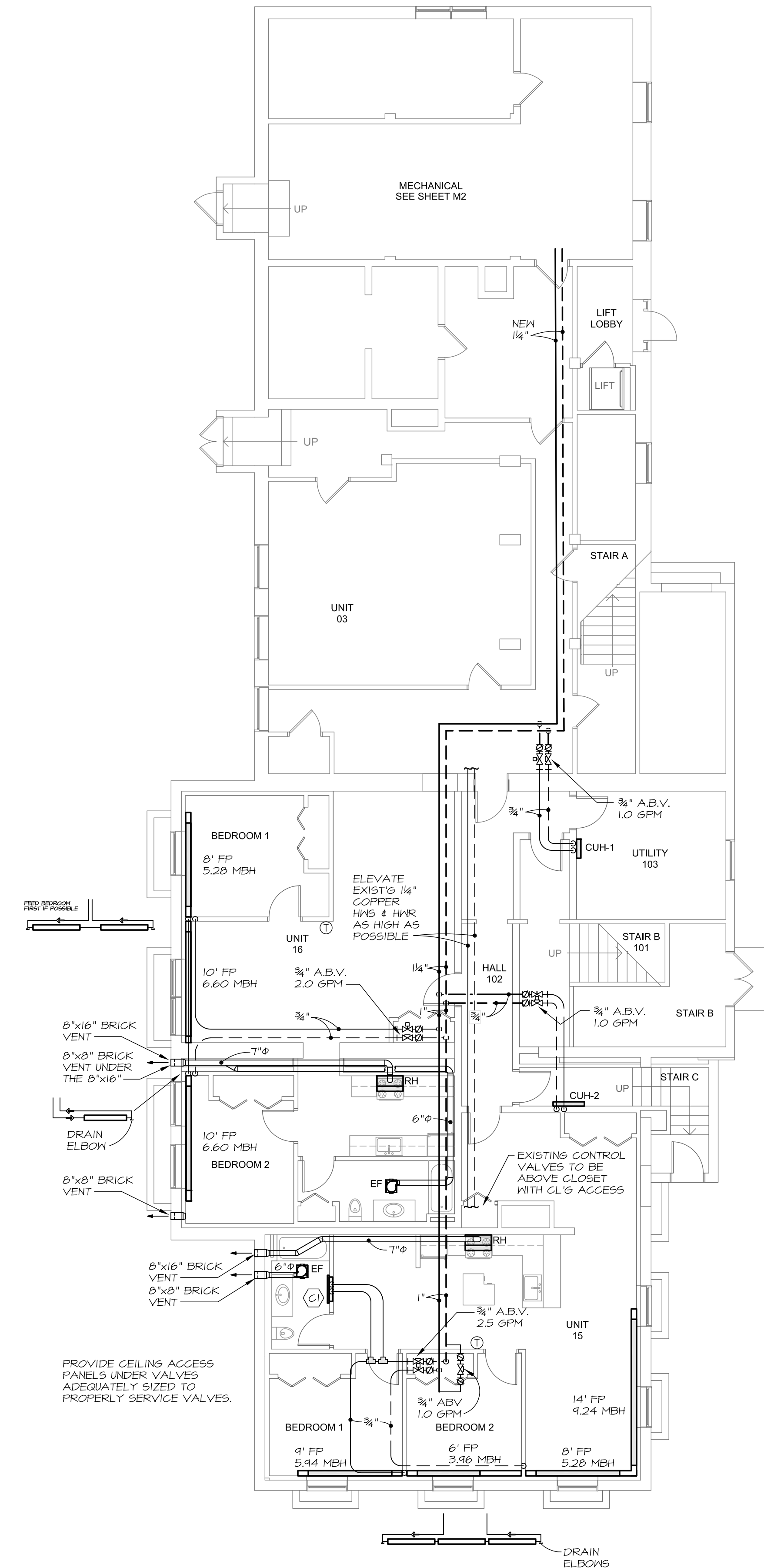
July 23, 2015 7:06 am  
 \VBEPS\Projects\1516 Rosa True Apartments\Drawings\1516 M1-M2.dwg



**1 SECOND FLOOR MECHANICAL PLAN**  
 SCALE: 1/8" = 1'-0"

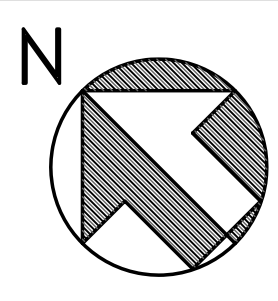


**2 FIRST FLOOR MECHANICAL PLAN**  
 SCALE: 1/8" = 1'-0"



**3 BASEMENT MECHANICAL PLAN**  
 SCALE: 1/8" = 1'-0"

FOR PERMITTING ONLY  
 NOT A CONTRACT  
 DOCUMENT



State of Maine Kurt F. Magnusson 10257 PROFESSIONAL ENGINEER	Prepared For: <b>DEVELOPERS COLLABORATIVE</b> 100 COMMERCIAL STREET PORTLAND, ME 04101
	Consulting Engineer: <b>MECHANICAL SYSTEMS ENGINEERS</b> ROYAL RIVER CENTER, UNIT 108 FOREST FALLS, ME 04733 (207) 846-3441 FACEBOOK: MECHANICAL SYSTEMS ENGINEERS © COPYRIGHT 2015
Architect: <b>ARCHETYPE architects</b> 48 Union Wharf Portland, Maine 04101 (207) 773-6022 ARCHETYPE@ARCHETYPEDA.COM	Project: <b>ROSA TRUE APARTMENTS</b> 140 PARK STREET, PORTLAND, ME
Revisions: Progress Print	Date: 23 JULY 2015
Scale: 1/8" = 1'-0"	<b>MECHANICAL FLOOR PLANS</b>
<b>M1</b> MSE PROJECT 1516	