

Prepared For:
**DEVELOPERS
COLLABORATIVE**
100 COMMERCIAL STREET
PORTLAND, ME 04101

Consultant:
Bartlett Design
LIGHTING & ELECTRICAL ENGINEERING
100 COMMERCIAL STREET, PORTLAND, ME 04101
TEL: (207) 752-8447 FAX: (207) 752-8490

Architect:
ARCHETYPE
architects
48 Union Wharf Portland, Maine 04101
(207) 775-6022 ARCHETYPE@ARCHETYPEPA.COM

Project:
**ROSA TRUE
APARTMENTS**
140 PARK STREET, PORTLAND, ME

Revisions:
07/24/2015
MSHA 50% / 90%
SUBMISSION

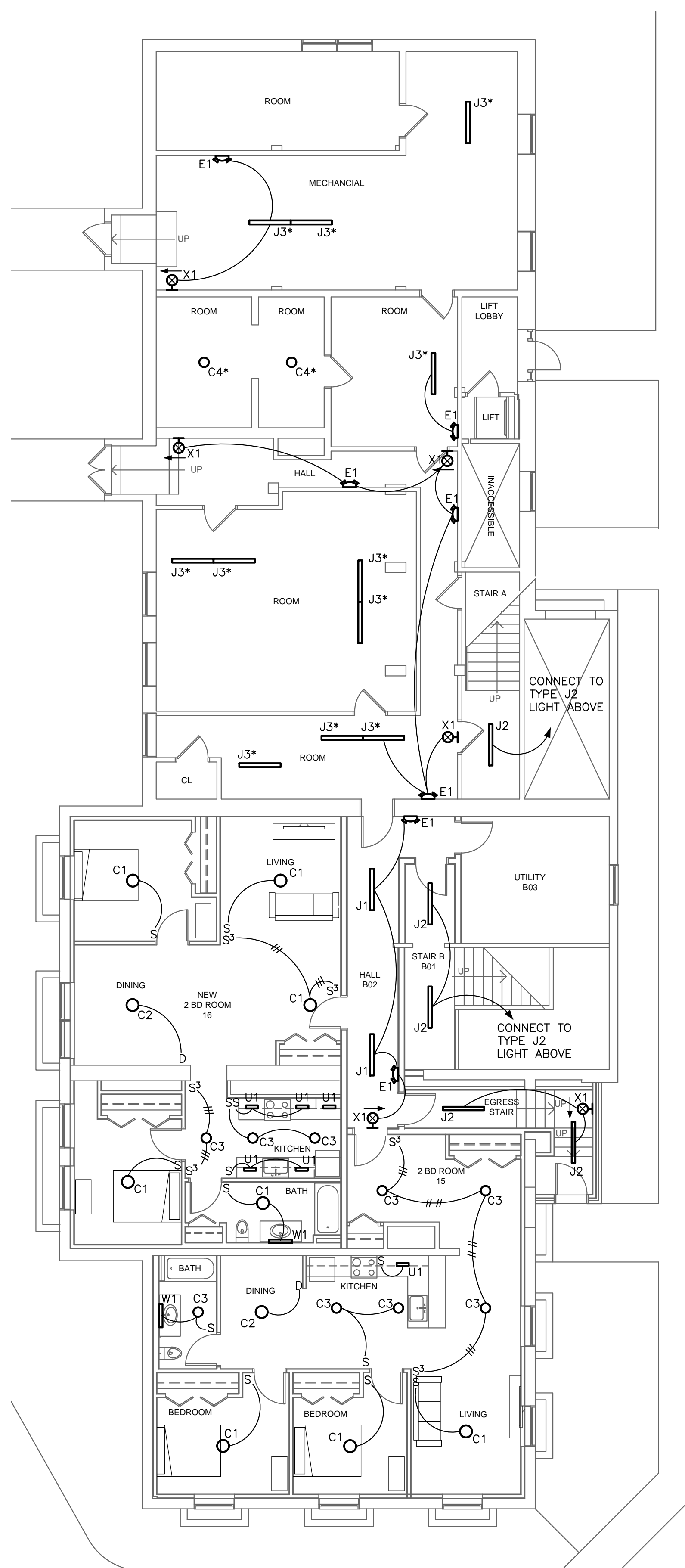
Date: JULY 23, 2015
Scale: 1/8" = 1'-0"
LIGHTING PLANS

E2.01

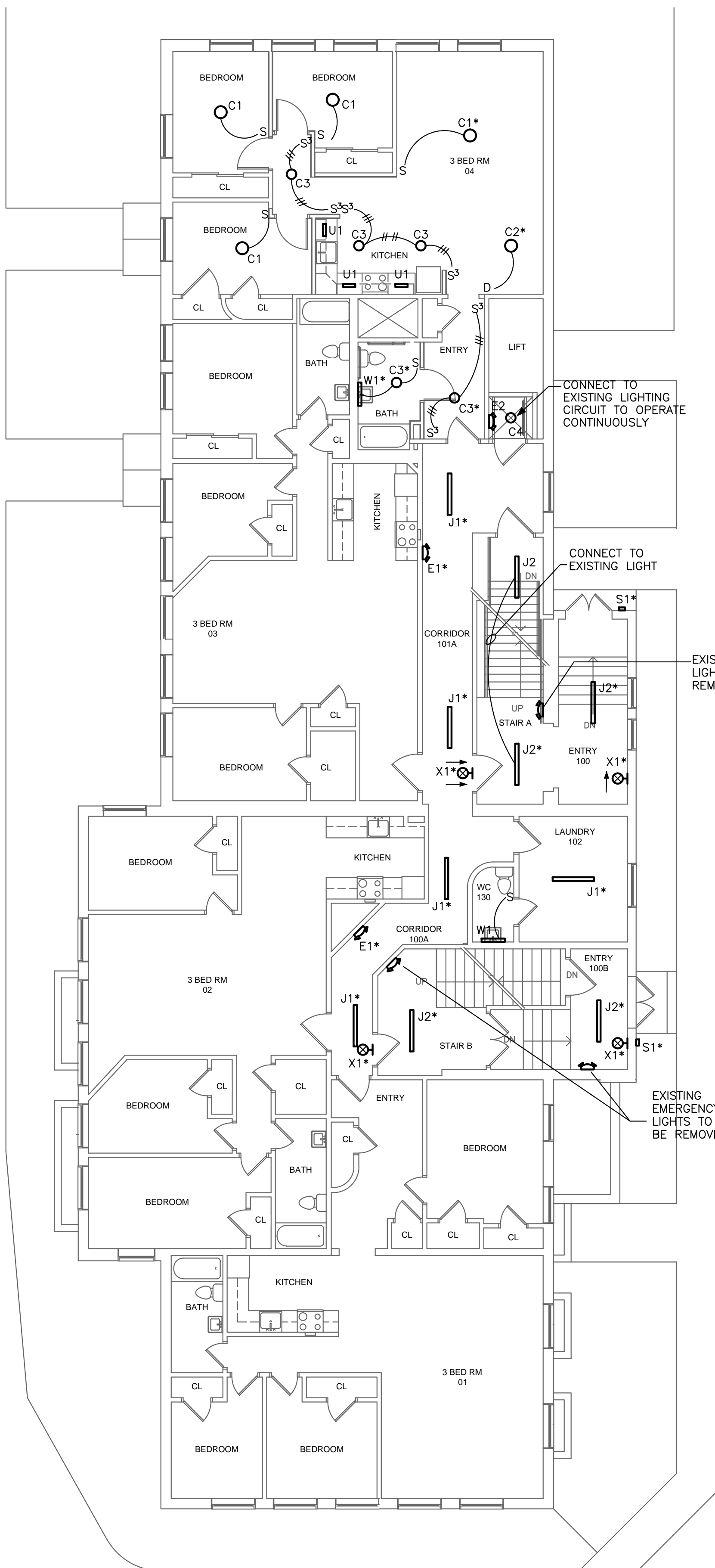
4 ELECTRICAL SYMBOLS

SYMBOL	PLAN SYMBOLS DESCRIPTION
	125V, 20A, DUPLEX GROUNDED RECEPTACLE GF1 = Ground Fault Type WP = Weatherproof AC = Mount 6" Above Sink or Counter REF = Refrigerator DW = Dishwasher A/C = Air Conditioner
	125V, 20A, QUAD GROUNDED RECEPTACLE
	125/250V, 50A, GROUNDED UNIT RANGE RECEPTACLE
	TELEPHONE OUTLET
	CABLE TELEVISION OUTLET
	JUNCTION BOX Indicates Range Hood Fan/Light Connection
	ELECTRIC PANELBOARD (See Plans for Details)
	CONTROL PANEL (See Plans for Details)
	UNIT LOAD CENTER
	HOUSE SYSTEM CARBON MONOXIDE DETECTOR
	HOUSE SYSTEM FIRE ALARM HEAT DETECTOR
	HOUSE SYSTEM FIRE ALARM SMOKE DETECTOR
	HOUSE SYSTEM FIRE ALARM PULL STATION Indicates Existing Device To Be Replaced
	HOUSE SYSTEM FIRE ALARM NOTIFICATION DEVICE Indicates Existing Device To Be Replaced Indicates Visual Only
	LOCAL SYSTEM WALL MOUNTED COMBINATION FIRE ALARM SMOKE DETECTOR / CO DETECTOR Device Designation
	LOCAL SYSTEM CEILING MOUNTED COMBINATION FIRE ALARM SMOKE DETECTOR / CO DETECTOR Device Designation
	CEILING MOUNTED LIGHT J1 Panelboard & Circuit Designation J2 Fixture Designation
	WALL MOUNTED LIGHT FIXTURE W6 Panelboard & Circuit Designation W7 Fixture Designation
	RECESSED/CEILING/PENDANT MTD LIGHT FIXTURE R1 Panelboard & Circuit Designation R2 Fixture Designation
	LIGHT/DEVICE SWITCH 3 = Three-Way Type
	DIMMER SWITCH
	CEILING MTD LTG CONTROL MOTION SENSOR
	CEILING MTD LTG CONTROL MOTION SENSOR
	MOTOR OPERATED DAMPER (Provided Under Div 15)
	MANUAL MOTOR SWITCH
	UNFUSED DISCONNECT SWITCH No. of Poles Ampere Rating

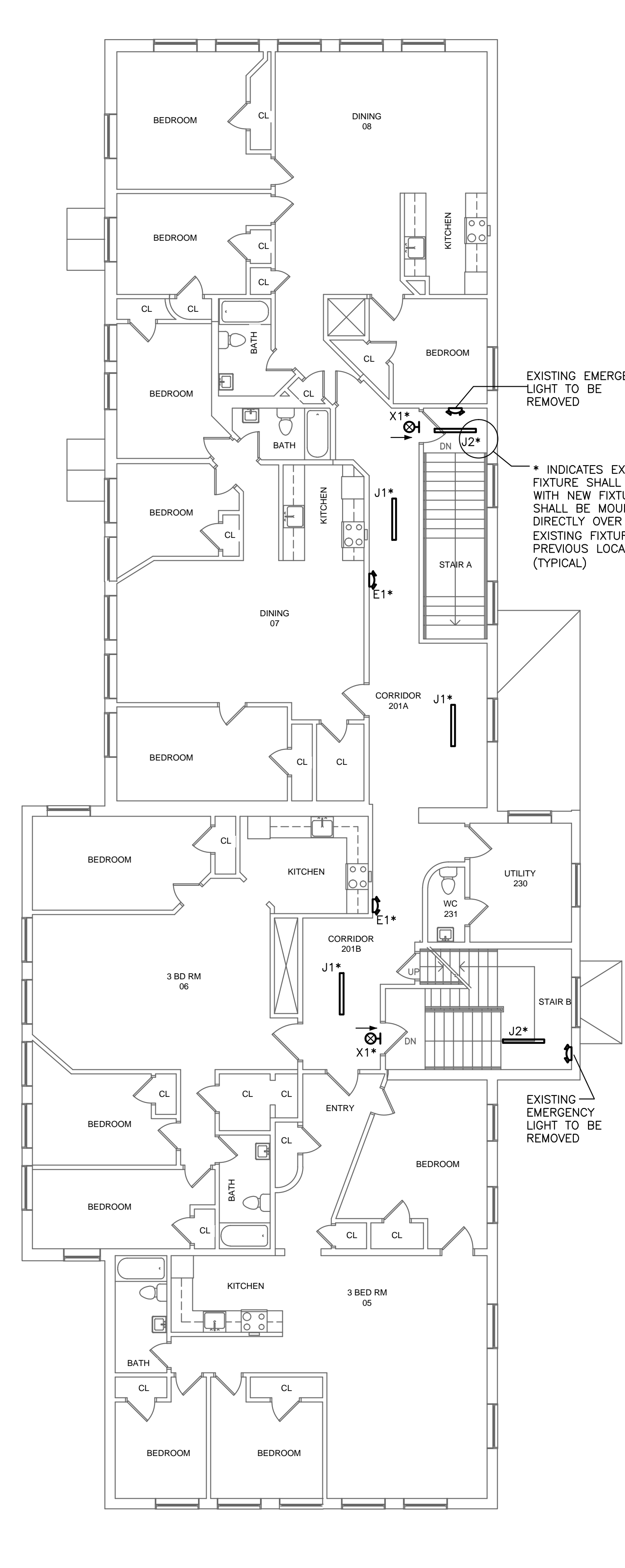
MOUNTING HEIGHTS
 GENERAL RECEPTACLE = 18" AFF
 COUNTER-TOP RECEPTACLE = 6" ABOVE COUNTER
 LIGHT SWITCHES = 48" AFF
 FIRE ALARM PULL STATIONS = 48" AFF
 FIRE ALARM A/V STATIONS = 80" AFF
 LOCAL FIRE ALARM WALL MTD. DETECTORS = 10" BELOW CLG
 WIRELESS NETWORK OUTLETS = 12" BELOW CEILING
 LIVING UNIT LOAD CENTERS = 48" AFF TO TOP CIRCUIT BREAKER
 WALL MOUNTED MOTION SENSORS = 7'-0" AFF



1 BASEMENT
1/8" = 1'-0"



2 1ST FLOOR
1/8" = 1'-0"



3 2ND FLOOR
1/8" = 1'-0"

**PERMIT SET ONLY
NOT FOR CONSTRUCTION**