
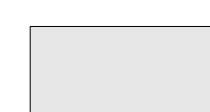
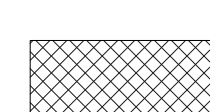


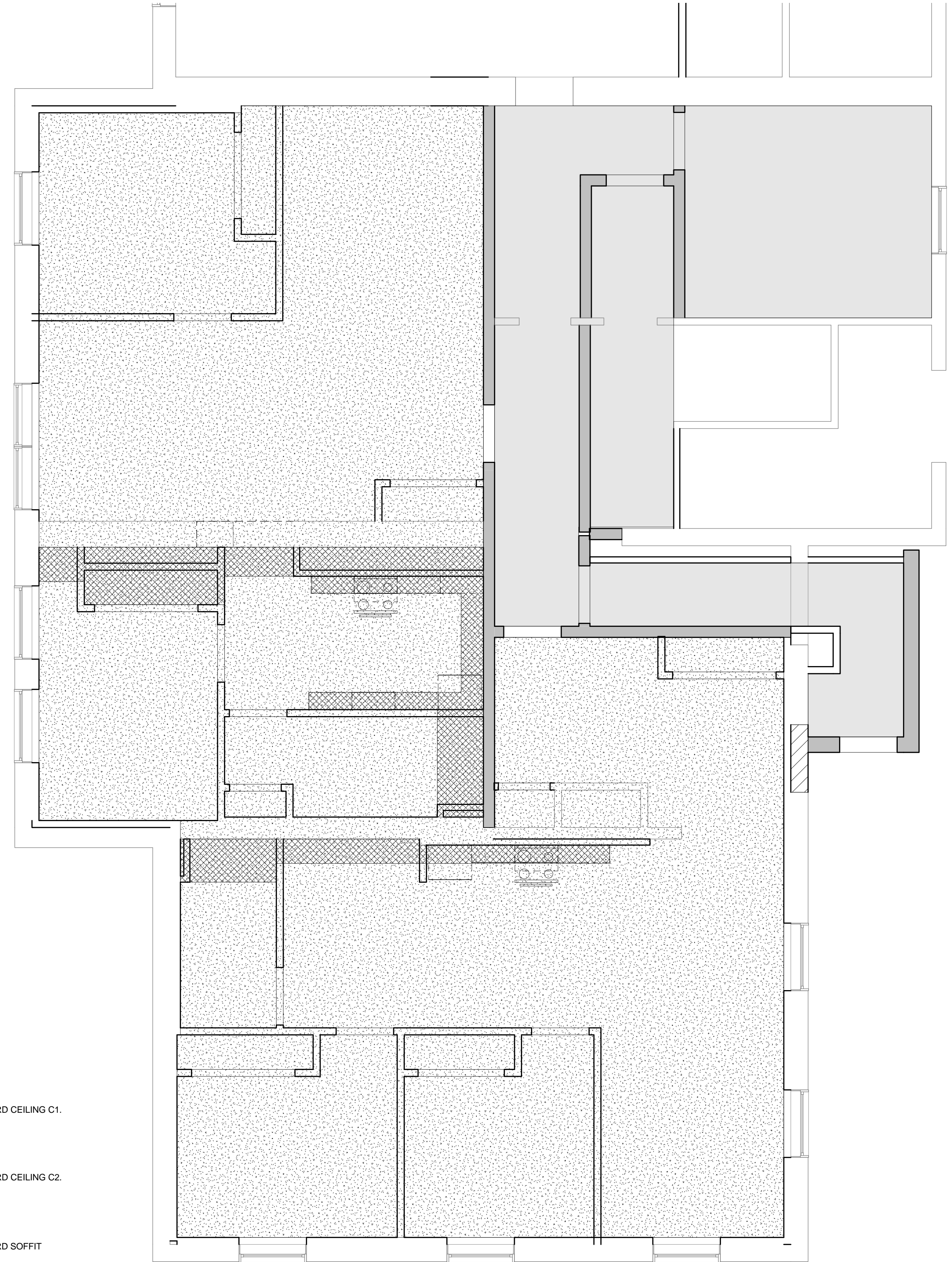
EXISTING CEILING REMAINS IN LIVING ROOM. NEW PAINT FINISH.

EXISTING SOFFIT

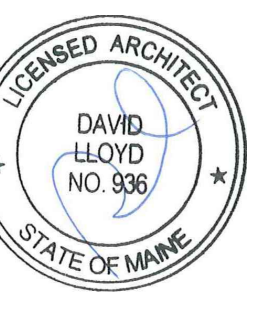
2 | 1ST FLOOR - UNIT 04 REFLECTED CEILING PLAN
1/4" = 1'-0"

LEGEND

-  GYPBOARD CEILING C1.
-  GYPBOARD CEILING C2.
-  GYPBOARD SOFFIT



1 | PART BASEMENT - REFLECTED CEILING PLAN
1/4" = 1'-0"



Prepared For:
**DEVELOPERS
COLLABORATIVE**

Consultant:

ARCHETYPE
architects
48 Union Wharf Portland, Maine 04101
(207) 772-6022 ARCHETYPE@ARCHETYPEA.COM

Project:
**ROSA TRUE
APARTMENTS**
140 PARK STREET, PORTLAND, ME

Revisions:

Date: 20 MAY, 2015
Scale: 1/4" = 1'-0"
**REFLECTED CEILING
PLANS**

A6.01