

DAVID LLOYD
NO. 936
STATE OF MAINE

Prepared For:
**DEVELOPERS
COLLABORATIVE**
100 COMMERCIAL STREET
PORTLAND, ME 04101

Consultant:

ARCHETYPE
architects
48 Union Wharf Portland, Maine 04101
(207) 772-0022 ARCHETYPE@ARCHETYPEA.COM

Architect:

Project:
**ROSA TRUE
APARTMENTS**
140 PARK STREET, PORTLAND, ME

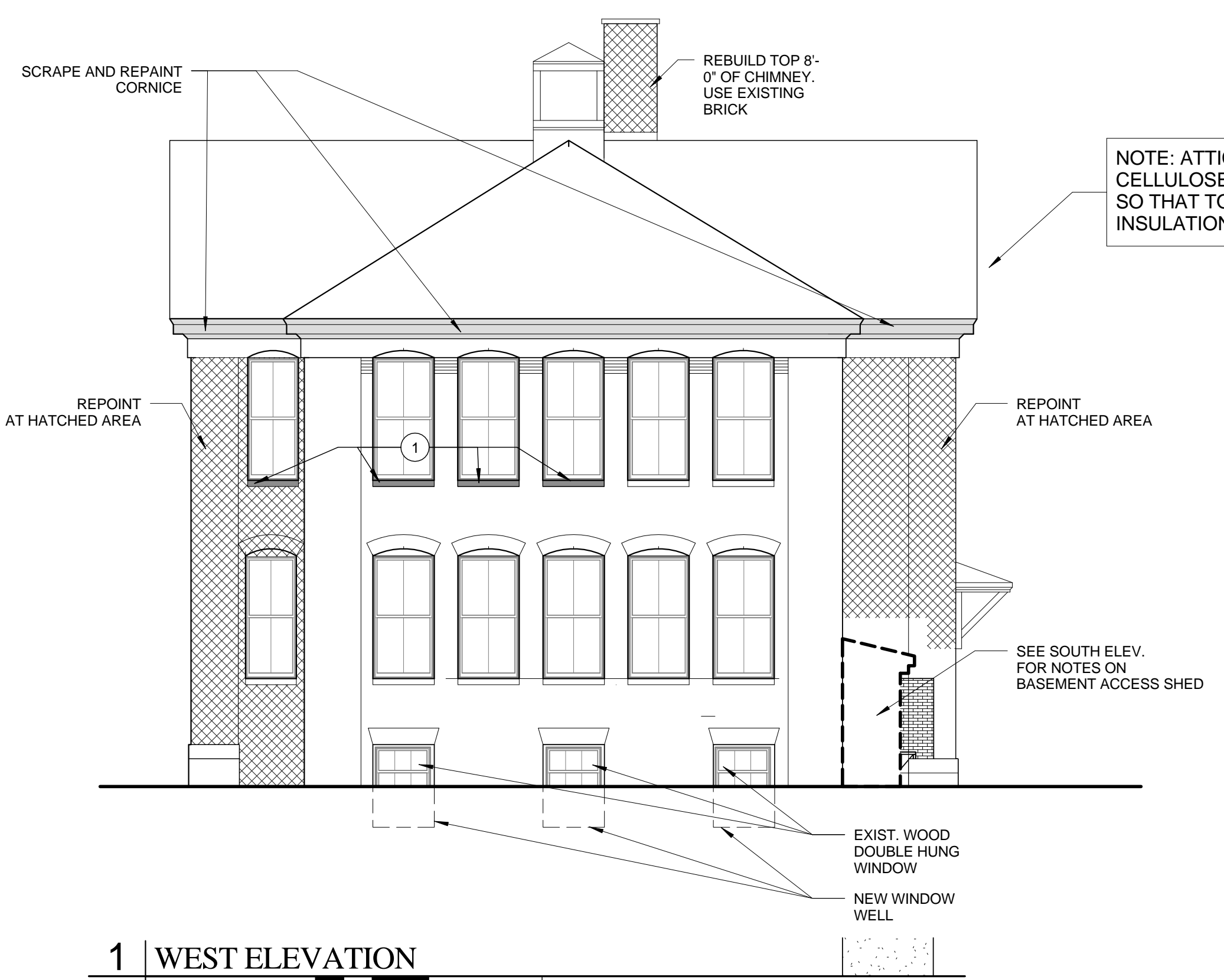
Revisions:

Date: 20 MAY, 2015

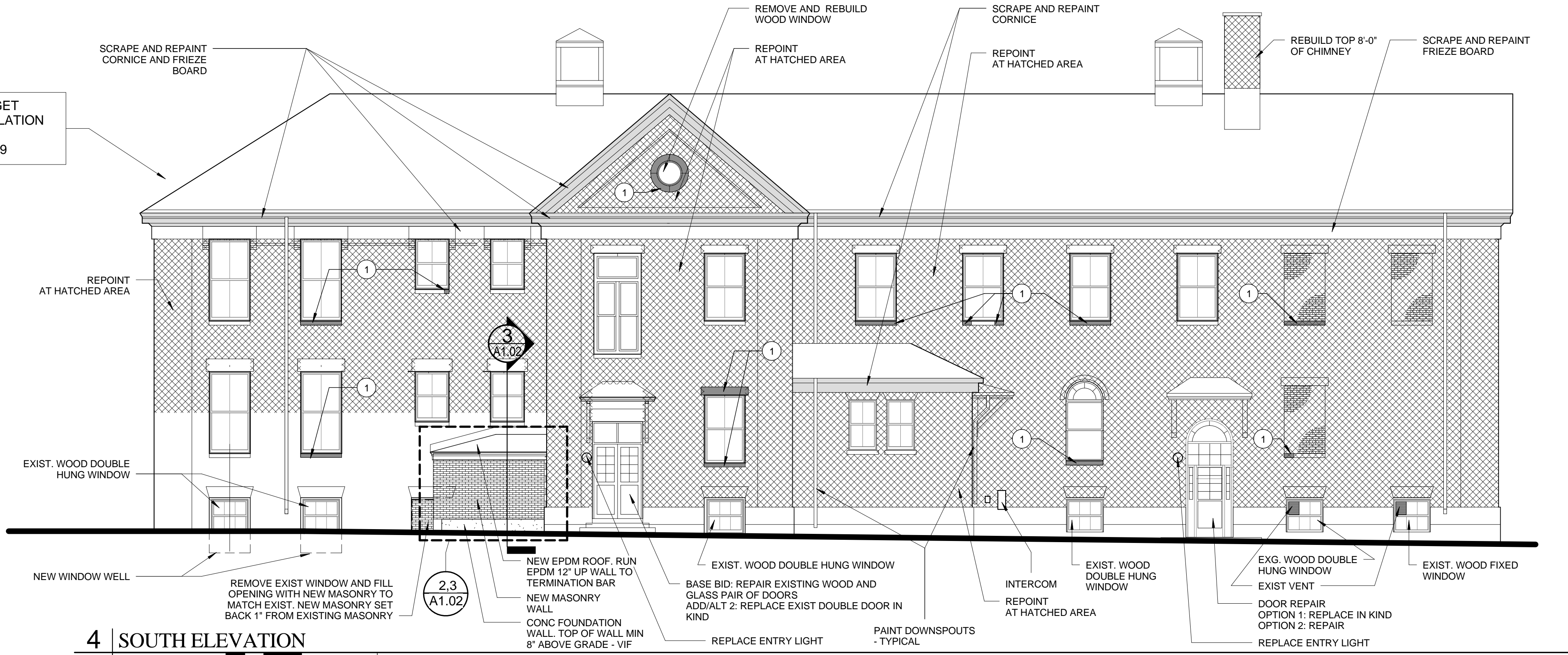
Scale: As indicated

BUILDING ELEVATIONS

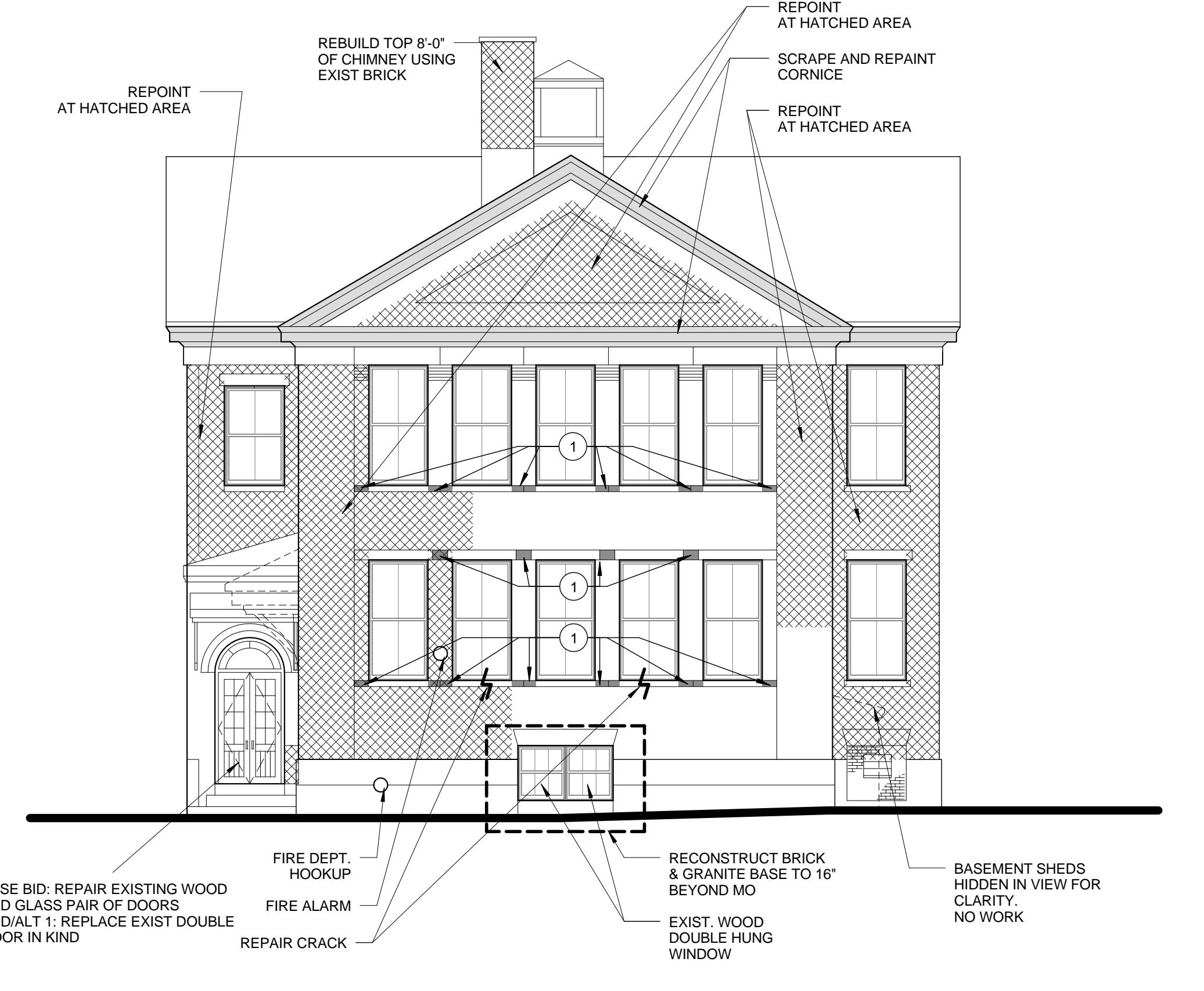
A2.01



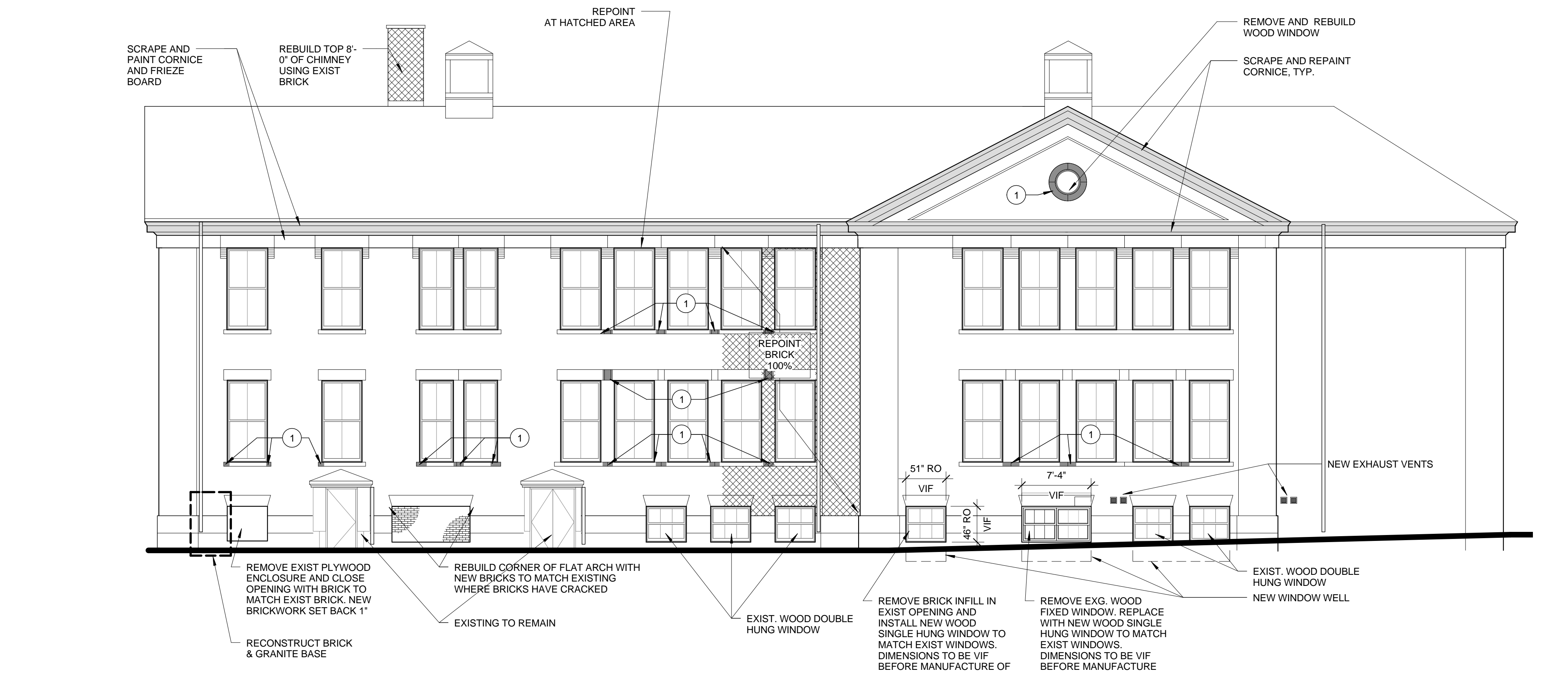
1 | WEST ELEVATION
1/8" = 1'-0"
0 2'-0" 4'-0" 8'-0" 16'-0"



4 | SOUTH ELEVATION
1/8" = 1'-0"
0 2'-0" 4'-0" 8'-0" 16'-0"



3 | EAST ELEVATION
1/8" = 1'-0"
0 2'-0" 4'-0" 8'-0" 16'-0"



2 | NORTH ELEVATION
1/8" = 1'-0"
0 2'-0" 4'-0" 8'-0" 16'-0"

GENERAL NOTES

- 1. REPAIR BROWNSTONE LINTEL OR SILL SEE ELEVATION
- 2. REPOINT BRICK IN THE AREA INDICATED
- 3. SCRAPE AND REPAINT ALL WOOD BRICKMOLD
- 4. SCRAPE AND REPAINT ALL WOOD CORNICE
- 5. CLEAN, SERVICE AND REPAIR AS NECESSARY EXISTING WOOD WINDOWS IN THE BASEMENT.
- 6. CLEAN GUTTERS. INSPECT FOR DAMAGE
- 7. REMOUNT DOWNSPOUT. PROVIDE UNIT VALUE. CARRY 7 MOUNTING BRACKET REATTACHMENTS
- 8. REPLACE ALL STORM WINDOWS WITH NEW SINGLE HUNG STORM WINDOWS WITH SCREENS OVER LOWER SASHES
- 9. EXISTING ROOF TO REMAIN. PROTECT DURING CHIMNEY WORK