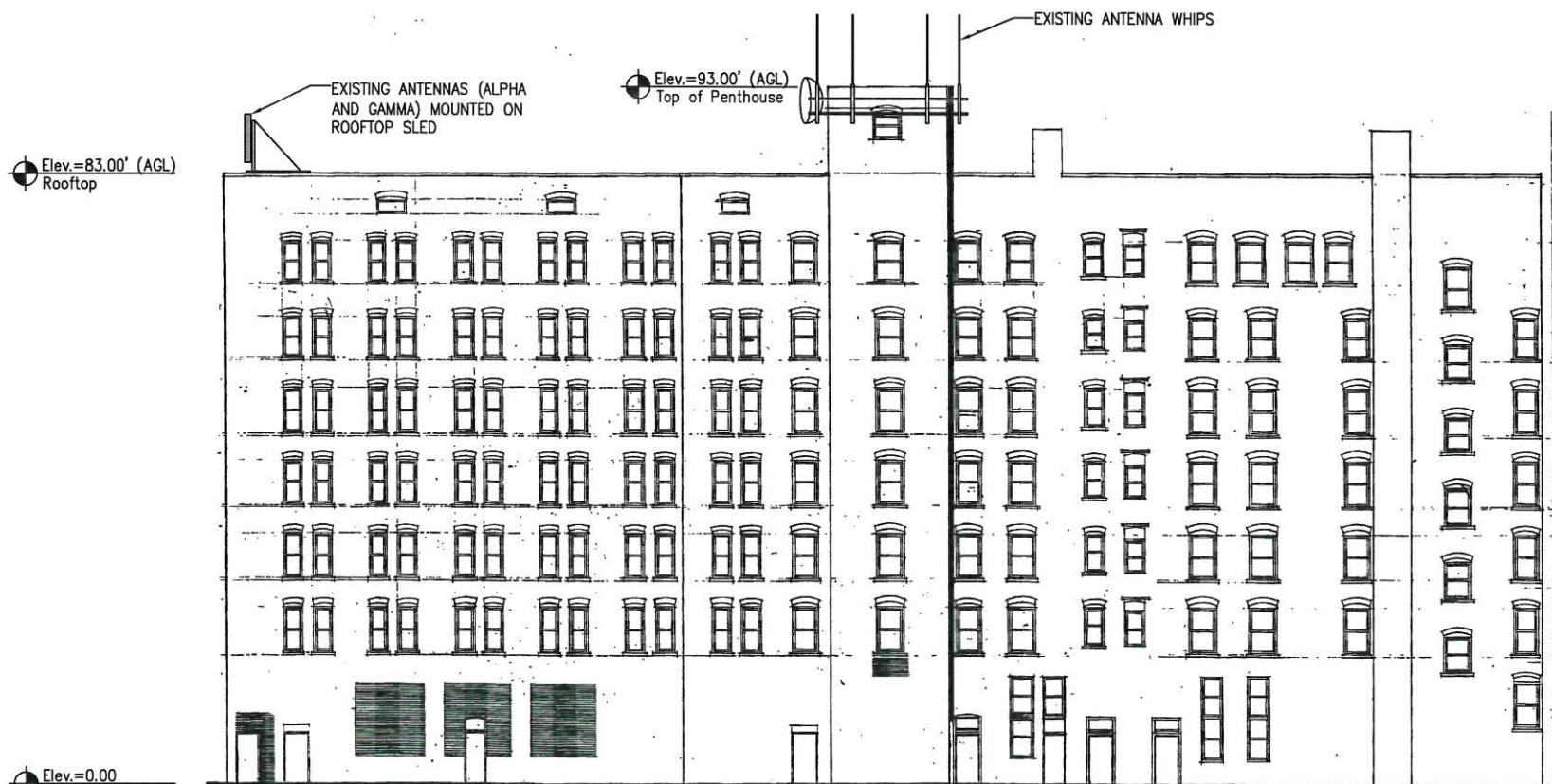


PARK STREET ELEVATION

SHEET NO.	DESCRIPTION	DATE	REV. NO.
C-1	BUILDING ELEVATIONS	9/30/14	0
C-2	ROOFTOP PLAN	9/30/14	0
C-3	EXISTING EQUIPMENT LAYOUT AND ELEVATIONS	9/30/14	0
C-4	ANTENNA MOUNTING DETAIL AND COAX LAYOUT	9/30/14	0
E-1	ONE-LINE DIAGRAM	9/30/14	0

SHEET INDEX



BUILDING ELEVATION

NOTES:
 NOTES:
 1. CONTRACTOR PLEASE REFER TO ANTENNA MAPPING AND STRUCTURAL ANALYSIS PERFORMED BY AMEC ENVIRONMENT & INFRASTRUCTURE, INC.. DATED 9-30-14 FOR DETAILS.

REPLACE 4 EXISTING CDMA/LTE BAND-2 V-POLE ANTENNAS WITH 2 NEW QUAD-POLE ANTENNAS AND 2 NEW CROSS-POLE ANTENNAS PROVIDING SEPARATE ANTENNA ELEMENTS FOR CDMA AND LTE BAND-2 PER SECTOR. ADDITIONALLY REMOVE THE EXISTING CDMA / LTE BAND-2 COMBINERS AND REMOTE THE LTE BAND-2 RRUS-11'S TO THE ROOFTOP.

PLANS PREPARED FOR:

10 Corporate Drive, Suite 210, Bedford, NH 03110

PROJECT INFORMATION
853419-LAFAYETTE
APARTMENTS
 638 CONGRESS STREET
 PORTLAND, ME 04101
 (CUMBERLAND COUNTY)

PLANS PREPARED BY:

511 Congress Street Suite 200, Portland ME 04101
 P: (207) 775-5401 F: (207) 772-4762 www.amec.com

PROJECT COORDINATION & MANAGEMENT:

KJK Wireless, LLC
 127 Ridge Road, Nashua, NH 03062
 Phone: (603) 888-8974

SEAL

REV	DATE	ISSUED FOR
△	9/30/14	ISSUED FOR CONSTRUCTION

PROJECT NO: 3618138346

DRAWN BY: CBM

RELEASED BY: MSD

SHEET TITLE
BUILDING ELEVATIONS

SHEET NUMBER	REVISION:
C-1	0