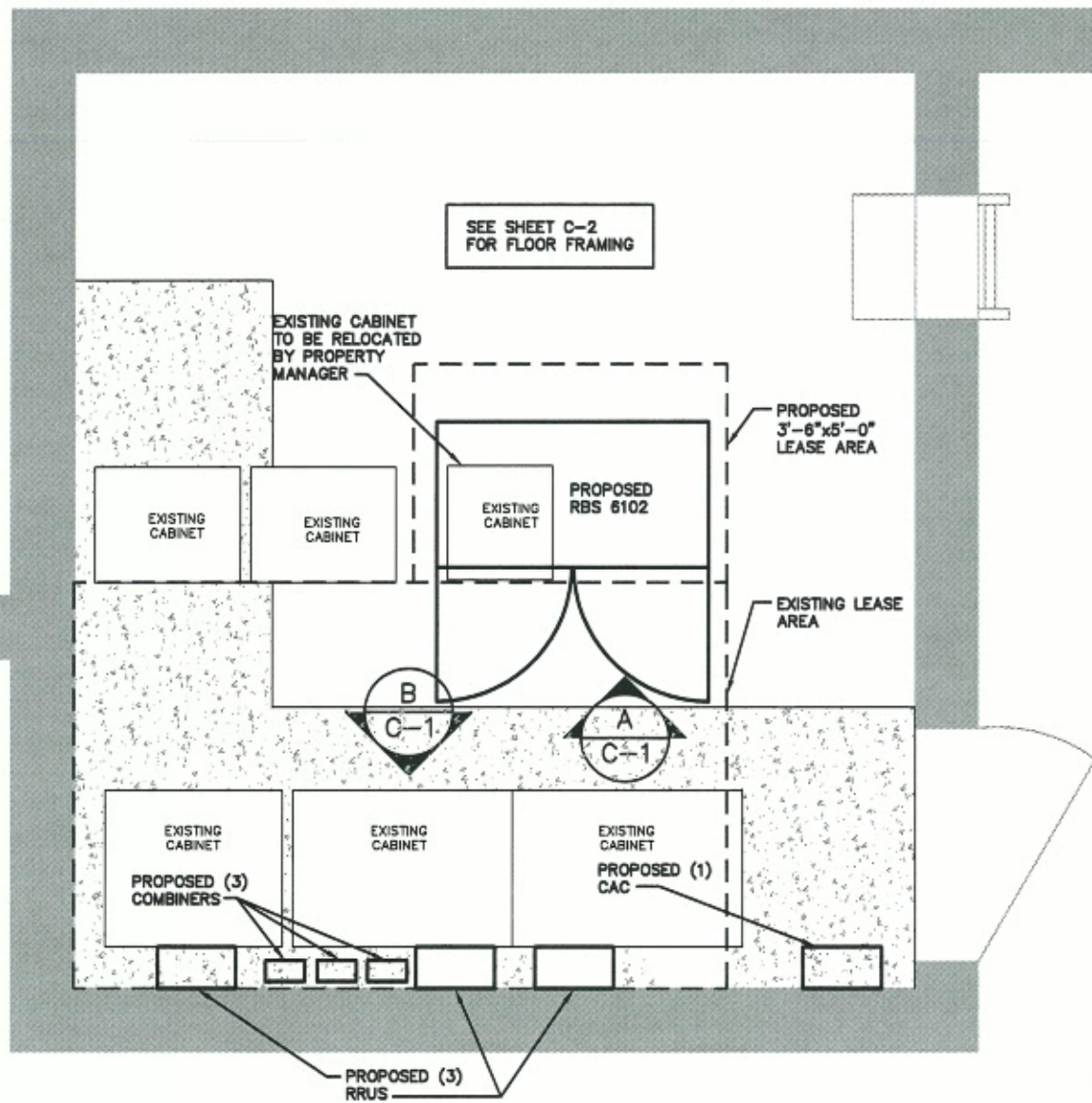
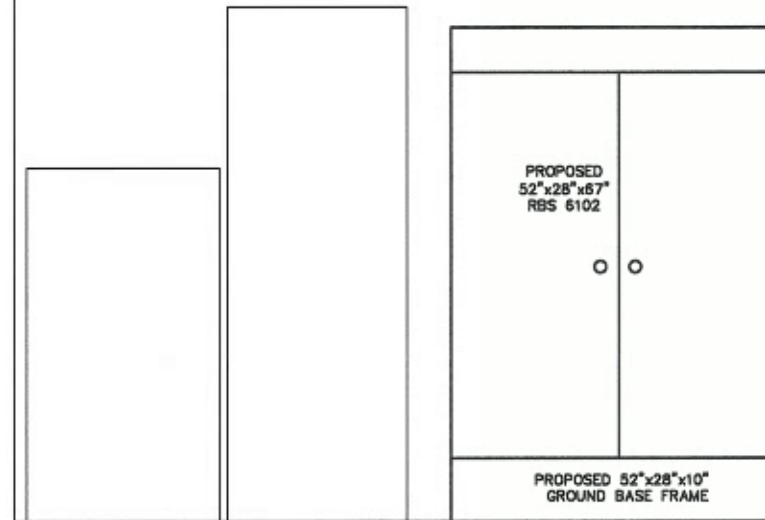


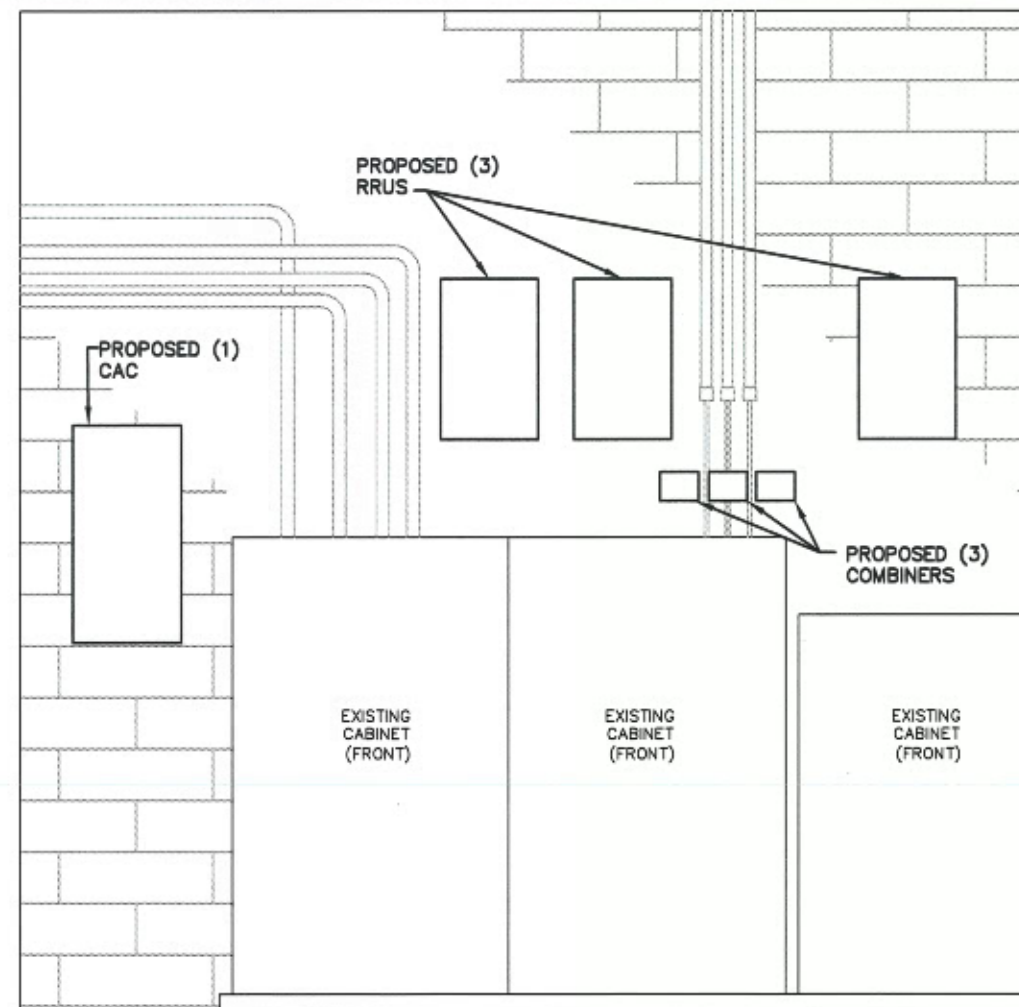
NOTE: CONTRACTOR PLEASE REFER TO STRUCTURAL ANALYSIS VERIFICATION LETTER PROVIDED BY AMEC ENVIRONMENT & INFRASTRUCTURE, INC. DATED 06/24/13 FOR DETAILS.



EQUIPMENT LAYOUT
SCALE: N.T.S.



A CABINET ELEVATION FRONT
SCALE: N.T.S.



B RRUS, CAC AND COMBINERS ELEVATION
SCALE: N.T.S.

PLANS PREPARED FOR:

US Cellular
We connect with you
10 Corporate Drive, Suite 210, Bedford, NH 03110

PROJECT INFORMATION
853419-LAFAYETTE
APARTMENTS
638 CONGRESS STREET
PORTLAND, ME 04101
(CUMBERLAND COUNTY)

PLANS PREPARED BY:

amec
511 Congress Street Suite 200, Portland ME 04101
P: (207) 775-5401 F: (207) 772-4762 www.amec.com

PROJECT COORDINATION & MANAGEMENT:

KJK Wireless, LLC
127 Ridge Road, Nashua, NH 03062
Phone: (603) 888-8974

SEAL

STATE OF MAINE
MICHAEL S. DELETETSKY
No. 5023
LICENSED PROFESSIONAL ENGINEER
24 JUN 2013

REV	DATE	ISSUED FOR
1	06/24/13	ISSUED FOR CONSTRUCTION

PROJECT NO: 3618138235

DRAWN BY: CBM

RELEASED BY: MSD

SHEET TITLE
PROPOSED EQUIPMENT LAYOUT AND ELEVATIONS

SHEET NUMBER	REVISION:
C-1	0