

outside unit

AOU18RLXFW Submittal ASU18RLF



Inverter Driven Heat Pump

Job Name: _____
 Location: _____
 Engineer: _____
 Submitted to: _____
 Submitted by: _____
 Reference: _____

Approval: _____
 Date: _____
 Construction: _____
 Unit #: _____
 Drawing #: _____

Outdoor Unit Power 208-230/VAC-1Ph-60Hz
 Available Voltage Range 187-253VAC
 Fuse Size, Max. 30A
 MCA 14.5A

Compressor Inverter Driven Variable Speed DC Rotary
 No. used 1
 Output 2,100W
 Lubrican Oil POE (RB68)

Fan type Propeller
 Motor Output 100W
 Airflow rate Cooling/Heating (High) 1489 / 2530CFM

Refrigerant R410A
 Outdoor unit 4lbs 10.1oz
 Control Electronic Expansion Valve
 O.D. Discharge (in) 3/8"(Flare)
 O.D Suction (in) 5/8"(Flare)

Dimensions H x W x D
 Uncrated (in) 32-3/4 x 35-3/8 x 13
 (mm) (830 x 900 x 330)
 Crated (in) 38-1/4 x 41-1/2 x 17-1/2
 (mm) (970 x 1050 x 445)

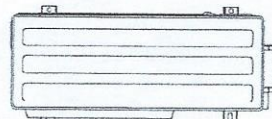
Weight Outdoor
 Net 135lbs (61kg)
 Gross Shipping 150lbs (68kg)

Cooling
 Rated Capacity 18,000BTU/h
 Min-Max Capacity 7,000~23,000BTU/h
 Rated Power Input 1.35kW
 Max. Power Input 3.01kW
 SEER 19.2
 EER 13.3
 Outdoor Sound Rating 47dB

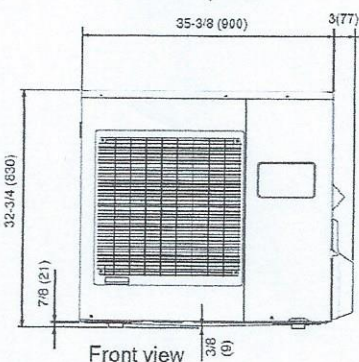
Heating
 Rated Capacity 21,600BTU/h
 Min-Max Capacity 7,500~36,200BTU/h
 Rated Power Input 1.80kW
 Max. Power Input 3.01kW
 HSPF 10.0
 EER 12.0
 Outdoor Sound Rating 50dB

Piping Lengths
 Max. Piping Length (Total) 164ft
 Max. Pipe Height Difference 98ft
 Connection method (Flared)

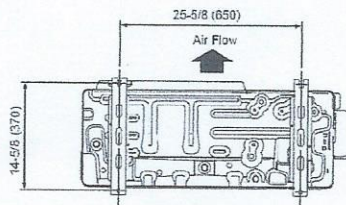
Operating Range
 Cooling 14°F~115°F DB
 Heating 5°F~75°F DB



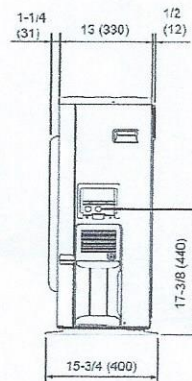
Top view



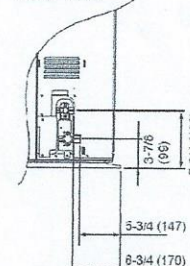
Front view



Bottom view



Side view



Fujitsu General America, Inc.
 Fairfield, NJ 07004
 Toll Free: 1-888-888-3424
 Fax: (973) 836-0447
 www.fujitsugeneral.com

Fujitsu products are subject to continuous improvements. Fujitsu reserves the right to modify product design, specifications and information in this data sheet without notice and without incurring any obligations.

Note: Specifications are based on the following conditions.
 Power source of specifications : 230V

Cooling: Indoor temperature of 80°F(26.67°C)DB / 67°F(19.44°C)WB, and outdoor temperature of 95°F(35°C)DB/75°F(23.89°C)WB.
 Heating: Indoor temperature of 70°F(21.11°C)DB / 60°F(15.56°C)WB, and outdoor temperature of 47°F(8.33°C)DB/43°F(6.11°C)WB.
 Pipe length : 24ft. 7in.(7.5m),Height difference : 0 ft.(0m) [Outdoor unit - Indoor unit]

