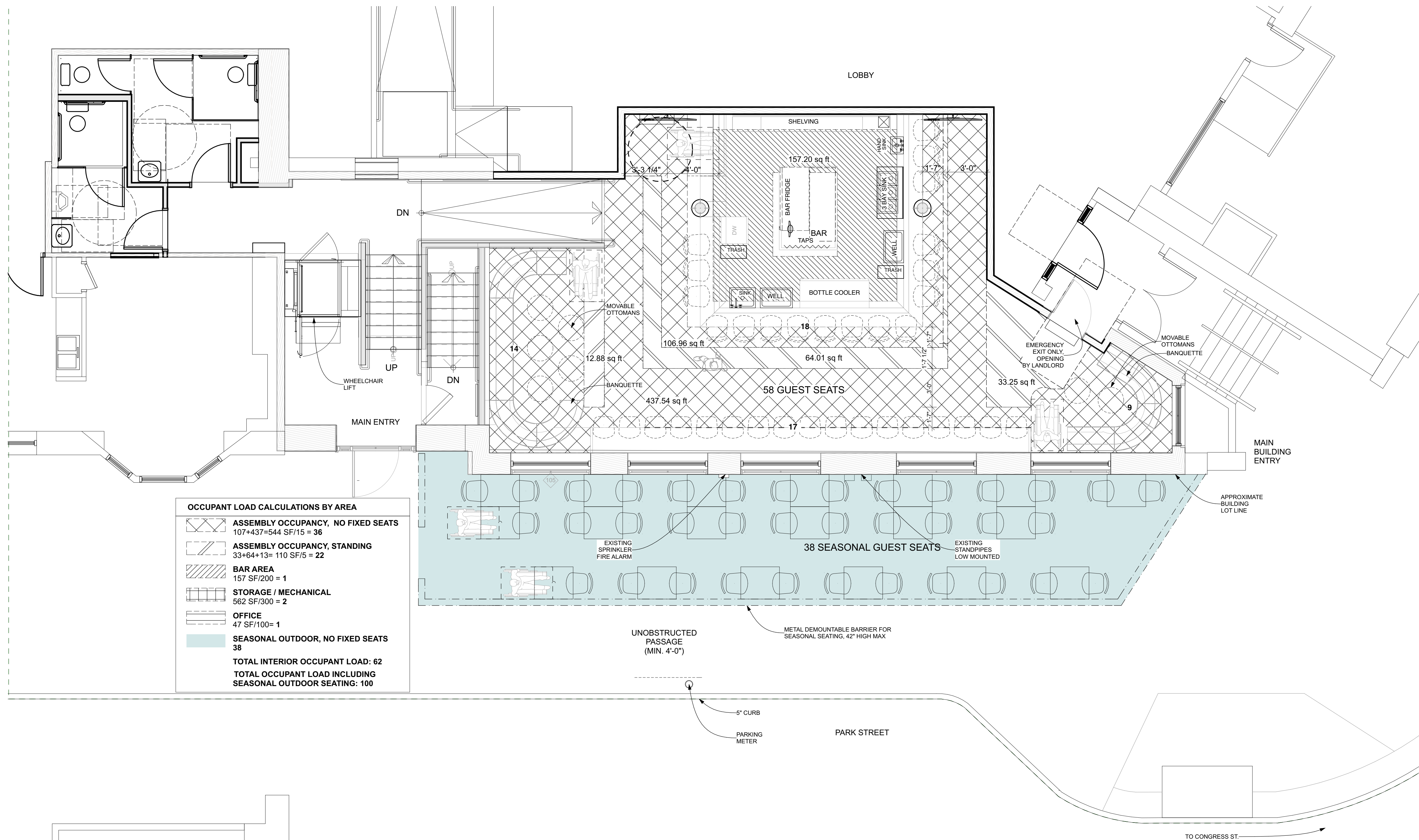


PROJECT:

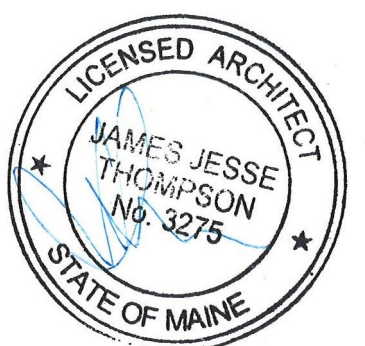
130 PARK ST.
PORTLAND, ME 04101



OCCUPANT LOAD CALCULATIONS BY AREA

	ASSEMBLY OCCUPANCY, NO FIXED SEATS 107+437=544 SF/15 = 36
	ASSEMBLY OCCUPANCY, STANDING 33+64+13= 110 SF/5 = 22
	BAR AREA 157 SF/200 = 1
	STORAGE / MECHANICAL 562 SF/300 = 2
	OFFICE 47 SF/100= 1
	SEASONAL OUTDOOR, NO FIXED SEATS 38
TOTAL INTERIOR OCCUPANT LOAD: 62	
TOTAL OCCUPANT LOAD INCLUDING SEASONAL OUTDOOR SEATING: 100	

1 FIRST FLOOR PLAN
SCALE: 1/4" = 1'-0"



NOT FOR CONSTRUCTION
PROJECT NO: DSK
DATE: 12/08/17
REVISED 1:
REVISED 2:
DRAWN BY: JB
PHASE: SCHEMATIC DESIGN

FIRST FLOOR
PLAN

A1-1

