

### EQUIPMENT SCHEDULE

**CURRENT EQUIPMENT**

- THREE (3) RFS APX16DWV-16DWV-S-E-A20 PANEL ANTENNAS
- THREE (3) COMMSCOPE LNX-6515DS-A1M 8' PANEL ANTENNAS
- SIX (6) RETS
- SIX (6) GENERIC SINGLE PCS TMA'S
- THREE (3) GENERIC TWIN STYLE 1B AWS TMA'S
- SIX (6) 1/2" COAX CABLES
- TWELVE (12) 3/8" COAX CABLES
- ONE (1) GPS ANTENNA AND ASSOCIATED 1/2" COAX CABLE
- ONE (1) ERICSSON RBS 3206 EQUIPMENT CABINET
- ONE (1) ERICSSON RBS 6201 EQUIPMENT CABINET
- ONE (1) PURCELL RAC24 EQUIPMENT CABINET
- ONE (1) PTS 8003 190AH BATTERY CABINET
- ONE (1) PCB 6500 BATTERY CABINET
- ONE (1) 19" RACK ENCLOSURE
- ONE (1) 60A SUB-PANEL

**EQUIPMENT TO BE REMOVED**

- THREE (3) COMMSCOPE LNX-6515DS-A1M 8' PANEL ANTENNAS
- SIX (6) RETS
- SIX (6) SINGLE PCS TMA'S
- FOUR (4) 3/8" COAX CABLES (TO BE CAPPED & WRAPPED)
- TWO (2) 1/2" COAX CABLES
- ONE (1) PCB 6500 BATTERY CABINET
- ONE (1) 60A SUB-PANEL
- ONE (1) PTS 8003 190AH BATTERY CABINET

**EQUIPMENT TO BE ADDED**

- THREE (3) RFS-APXVAA24\_43-U-A20 PANEL ANTENNAS
- SIX (6) RFS ACU-A20-S ANTENNA CONTROL UNITS
- THREE (3) ERICSSON 4478 B71 RRU'S
- THREE (3) RFS TWIN STYLE 3CX ATMA4P4DBP-1A20 TMA'S
- TWO (2) 6x12 DC/FIBER CABLES
- ONE (1) PCB 6200 BATTERY CABINET
- ONE (1) 200A SUB-PANEL

**FINAL EQUIPMENT CONFIGURATION**

- THREE (3) RFS-APXVAA24\_43-U-A20 PANEL ANTENNAS
- THREE (3) COMMSCOPE FF-65C-R2 8' PANEL ANTENNAS
- SIX (6) RFS ACU-A20-S ANTENNA CONTROL UNITS
- THREE (3) ERICSSON 4478 B71 RRU'S
- THREE (3) GENERIC TWIN STYLE 1B AWS TMA'S
- THREE (3) RFS TWIN STYLE 3CX ATMA4P4DBP-1A20 TMA'S
- SIX (6) 1/2" COAX CABLES
- TEN (10) 3/8" COAX CABLES ((4) CAPPED & WRAPPED)
- TWO (2) 6x12 DC/FIBER CABLES
- ONE (1) GPS ANTENNA AND ASSOCIATED 1/2" COAX CABLE
- ONE (1) ERICSSON RBS 3206 EQUIPMENT CABINET
- ONE (1) ERICSSON RBS 6201 EQUIPMENT CABINET
- ONE (1) PURCELL RAC24 EQUIPMENT CABINET
- ONE (1) PCB 6200 BATTERY CABINET
- ONE (1) 19" RACK ENCLOSURE
- ONE (1) 200A SUB-PANEL

EXISTING EQUIPMENT SPACE REQUIREMENTS WILL NOT CHANGE

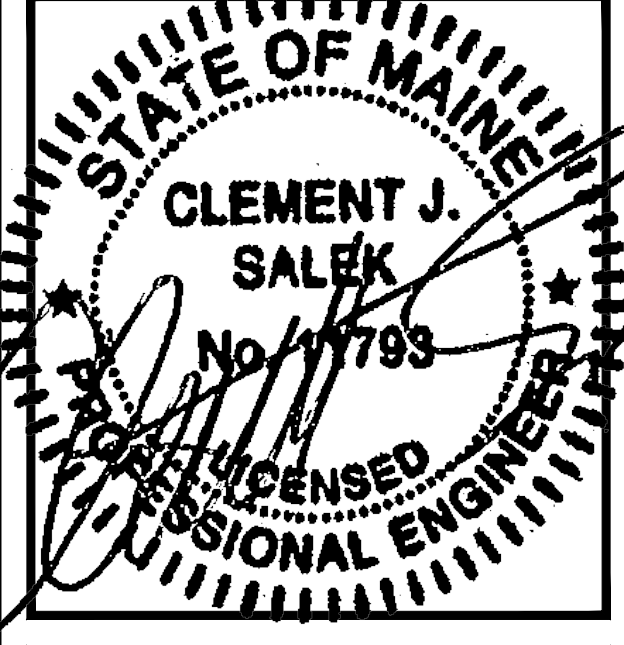
RF CONFIGURATION  
6004G

**T-Mobile**

T-MOBILE NORTHEAST LLC  
15 COMMERCE WAY, SUITE B  
NORTON, MA 02766  
OFFICE: (508) 286-2700

**CHAPPELL ENGINEERING ASSOCIATES, LLC**  
Civil - Structural - Land Surveying

R.K. EXECUTIVE CENTRE  
201 BOSTON POST ROAD WEST  
SUITE 101  
MARLBOROUGH, MA 01752  
(508)481-7400  
www.chappellengineering.com



APPROVALS

STRUCTURE OWNER \_\_\_\_\_

LEASING \_\_\_\_\_

R.F. \_\_\_\_\_

ZONING \_\_\_\_\_

CONSTRUCTION \_\_\_\_\_

A/E \_\_\_\_\_

PROJECT NO: 4PB1259A

DRAWN BY: CMC

CHECKED BY: JMT

VERSION

NO.	DATE	DESCRIPTION
3	07/24/17	CONSTRUCTION FINAL
2	07/14/17	CONSTRUCTION FINAL
1	07/13/17	CONSTRUCTION
0	06/22/17	CONSTRUCTION REVIEW

THIS DOCUMENT IS THE CREATION, DESIGN, PROPERTY AND COPYRIGHTED WORK OF T-MOBILE NORTHEAST LLC. ANY DUPLICATION OR USE WITHOUT EXPRESS WRITTEN CONSENT IS STRICTLY PROHIBITED. DUPLICATION AND USE BY GOVERNMENT AGENCIES FOR THE PURPOSES OF CONDUCTING THEIR LAWFULLY AUTHORIZED REGULATORY AND ADMINISTRATIVE FUNCTIONS IS SPECIFICALLY ALLOWED.

4PB1259A  
PB259/COMFAC-LAFAYETTE

638 CONGRESS STREET  
PORTLAND, ME 04101

SHEET TITLE  
ROOF PLAN

SHEET NUMBER  
A-1

PROP. T-MOBILE EQUIPMENT WITHIN EXIST. 13'-4"x14'-8" EQUIPMENT ROOM ON 1ST FLOOR OF EXIST. BUILDING

ALL SECTORS  
PROP. T-MOBILE L600 ANTENNAS (1 PER SECTOR, TOTAL OF 3) MOUNTED TO EXIST. PENTHOUSE ON EXIST. ANTENNA MOUNTS TO REPLACE EXIST. (3) L700 ANTENNAS (PAINT TO MATCH)

ALL SECTORS  
PROP. T-MOBILE RRU'S (1 PER SECTOR, TOTAL OF 3) MOUNTED TO EXIST. PENTHOUSE ON EXIST. ANTENNA MOUNTS BEHIND PROP. L600 ANTENNAS (PAINT TO MATCH)

PROP. T-MOBILE (2) 6x12 HCS CABLES ROUTED WITHIN EXIST. CABLE TRAYS TO REPLACE EXIST. (2) 3/8" COAX CABLES

EXIST. T-MOBILE (6) 1/4" COAX CABLES & (10) 3/8" COAX CABLES ROUTED WITHIN EXIST. CABLE TRAYS (TO REMAIN)  
((4) 3/8" COAX CABLES TO BE CAPPED & WRAPPED)

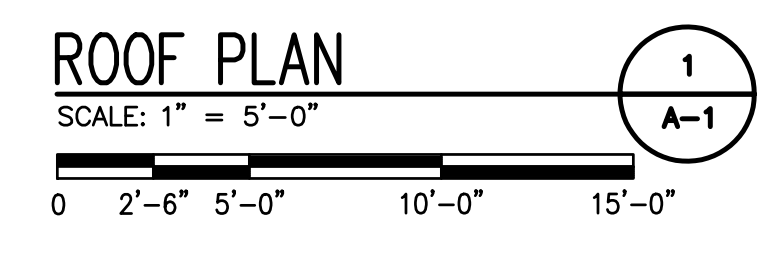
EXIST. T-MOBILE TWIN AWS TMA'S (1 PER SECTOR, TOTAL OF 3) MOUNTED BEHIND EXIST. ANTENNAS (TO REMAIN)

ALL SECTORS  
PROP. T-MOBILE TWIN STYLE 3CX TMA'S (1 PER SECTOR, TOTAL OF 3) MOUNTED TO EXIST. PENTHOUSE ON EXIST. ANTENNA MOUNTS BEHIND EXIST. ANTENNAS TO REPLACE EXIST. (6) SINGLE PCS TMA'S

EXIST. T-MOBILE PANEL ANTENNAS (1 PER SECTOR, TOTAL OF 3) MOUNTED TO EXIST. PENTHOUSE ON EXIST. ANTENNA MOUNTS (TO REMAIN)

EXIST. T-MOBILE GPS ANTENNA MOUNTED TO EXIST. ANTENNA PIPE (TO REMAIN)

ALL SECTORS  
PROP. T-MOBILE ACU-A20-S ANTENNA CONTROL UNITS (2 PER SECTOR, TOTAL OF 6) MOUNTED TO EXIST. ANTENNAS TO REPLACE EXIST. (6) RETS (PAINT TO MATCH)



NOTE  
REPLACE EXISTING ANTENNA PIPES WITH NEW 2 1/2" SCH.40 PIPES, ~144" LONG (1 PER SECTOR, TOTAL OF 3) (PAINT TO MATCH).