

© 2015 RYAN SENATORE ARCHITECTURE

LAYFAYETTE BUILDING RENOVATION  
PARK STREET  
PORTLAND, MAINE



RYAN SENATORE ARCHITECTURE  
565 CONGRESS ST. SUITE 304  
PORTLAND, MAINE 04101  
207-650-6414  
senatorearchitecture.com

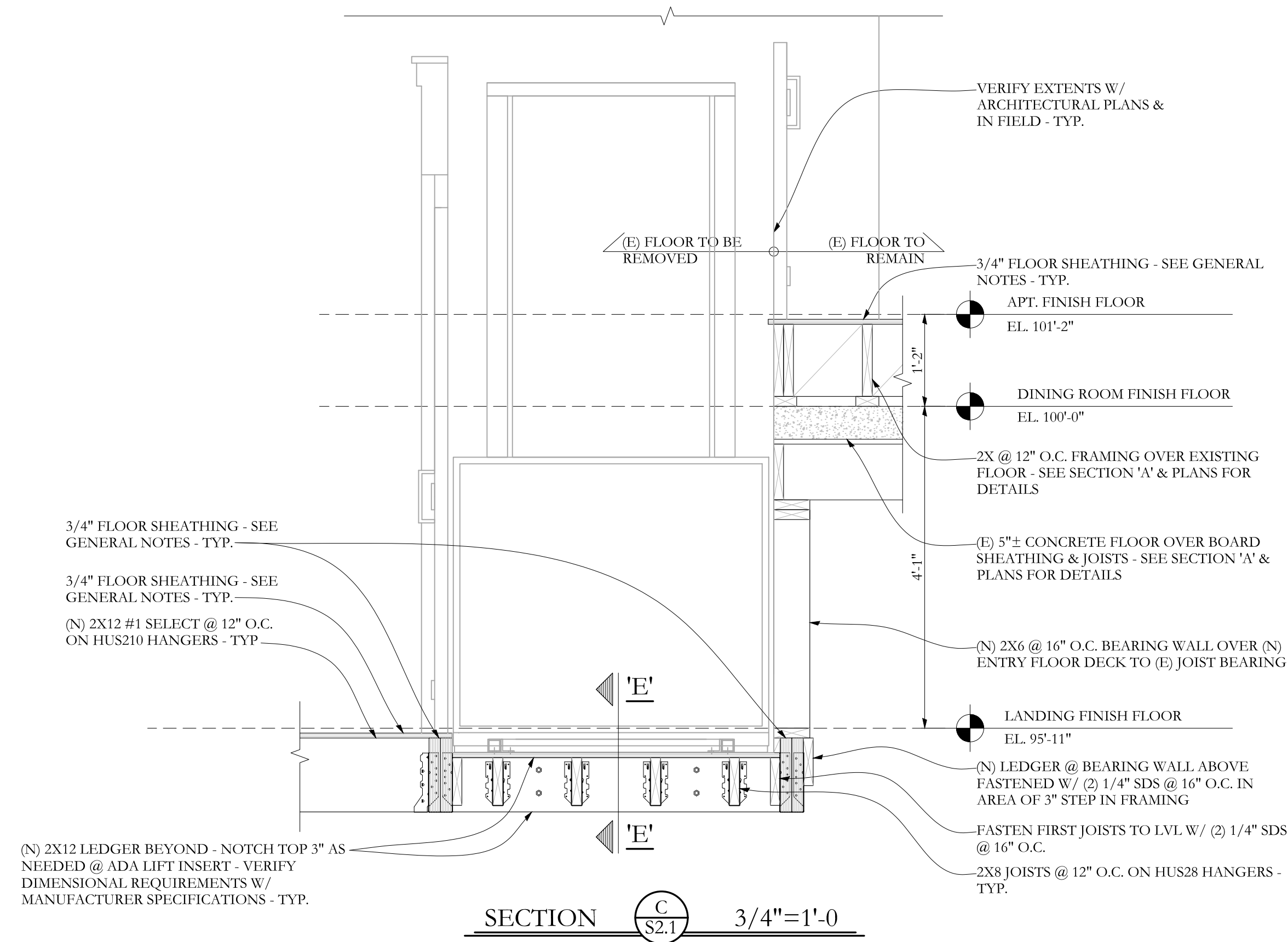
CONSULTANTS:  
Structural Integrity  
77 Oak Street  
Portland, ME 04101  
207-774-4614

REVISIONS:

DATE: 29 September, 2016  
PROJECT No. 1621  
DRAWN BY: WMc  
CHECKED BY: ACJ  
SCALE: AS NOTED

SHEET TITLE:  
SECTIONS

S-2.1



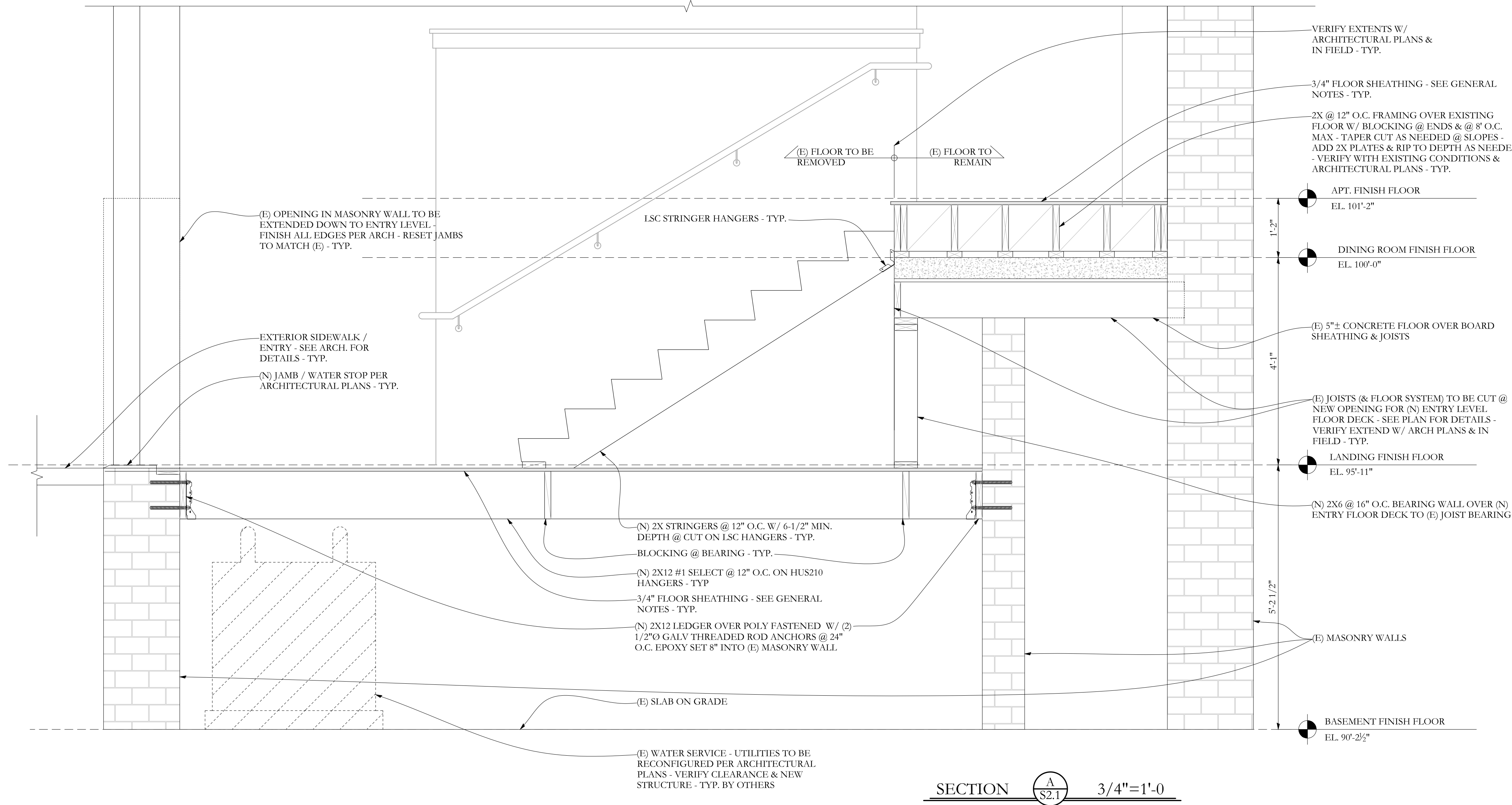
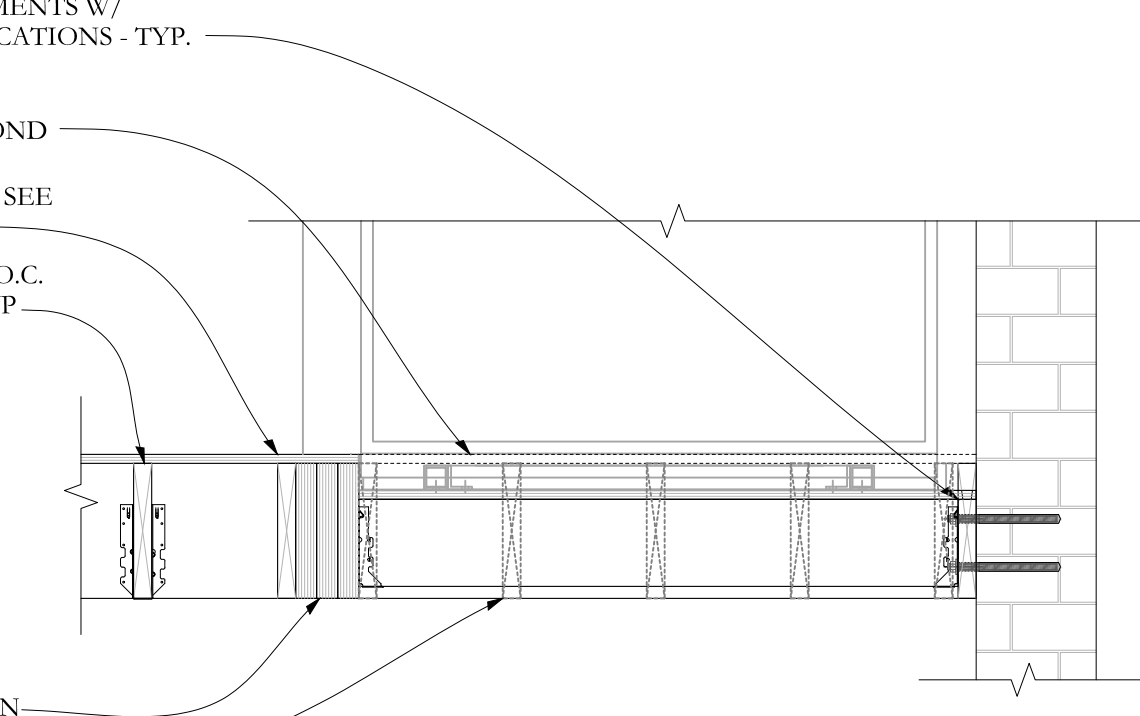
(N) 2X12 LEDGER PER PLAN - NOTCH TOP 3" AS NEEDED @ ADA LIFT INSERT - VERIFY DIMENSIONAL REQUIREMENTS W/ MANUFACTURER SPECIFICATIONS - TYP.

FLOOR SHEATHING BEYOND  
3/4" FLOOR SHEATHING - SEE GENERAL NOTES - TYP.

(N) 2X12 #1 SELECT @ 12" O.C. ON HUS210 HANGERS - TYP.

LVL BEAM PER PLAN  
JOIST BEYOND PER PLAN

SECTION D 3/4"=1'-0



VERIFY EXTENTS W/ ARCHITECTURAL PLANS & IN FIELD - TYP.

3/4" FLOOR SHEATHING - SEE GENERAL NOTES - TYP.  
2X @ 12" O.C. FRAMING OVER EXISTING FLOOR W/ BLOCKING @ ENDS & @ 8" O.C. MAX - TAPER CUT AS NEEDED @ SLOPES - ADD 2X PLATES & RIP TO DEPTH AS NEEDED - VERIFY WITH EXISTING CONDITIONS & ARCHITECTURAL PLANS - TYP.

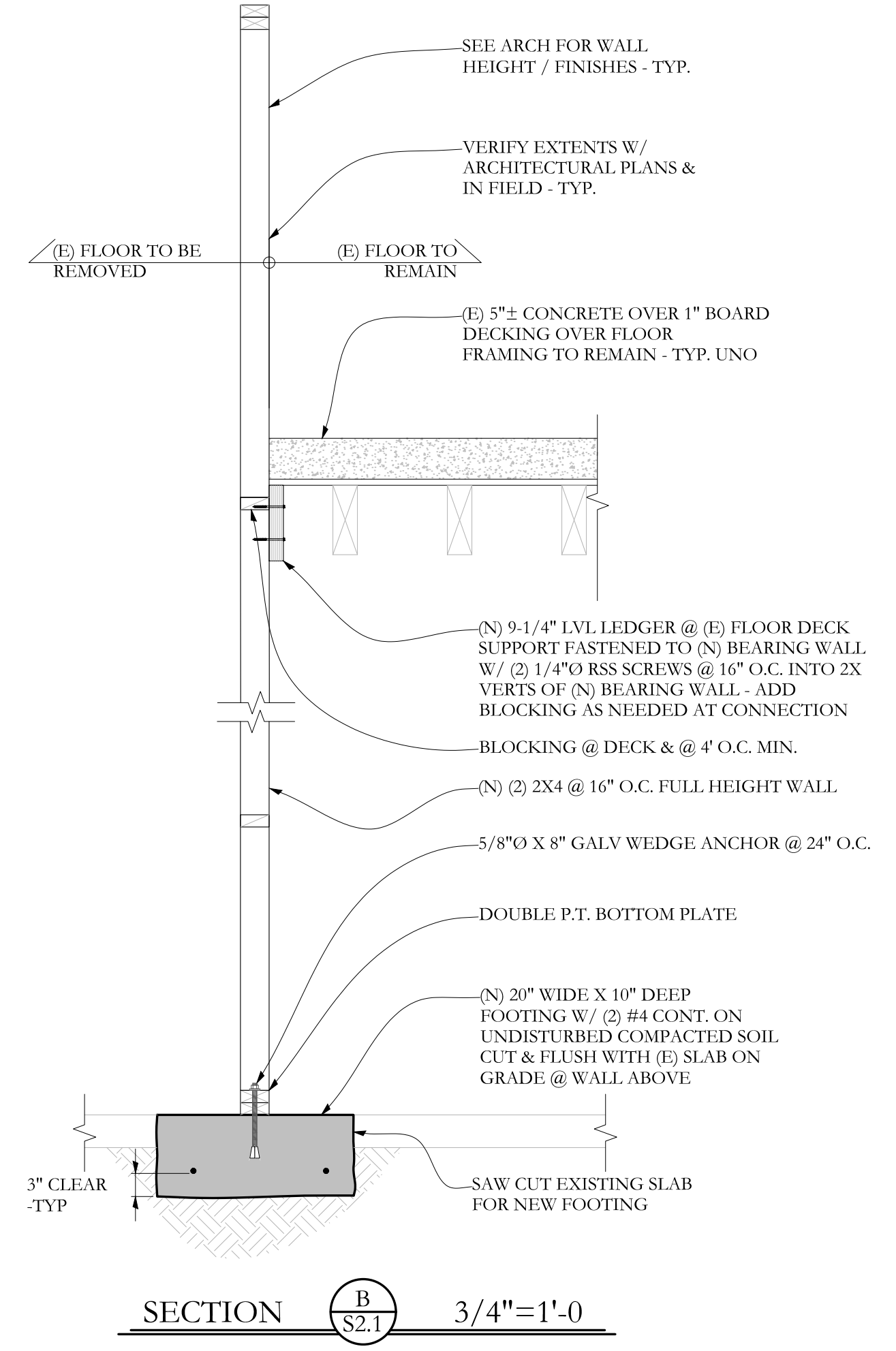
(E) 5"± CONCRETE FLOOR OVER BOARD SHEATHING & JOISTS

(E) JOISTS (& FLOOR SYSTEM) TO BE CUT @ NEW OPENING FOR (N) ENTRY LEVEL FLOOR DECK - SEE PLAN FOR DETAILS - VERIFY EXTEND W/ ARCH PLANS & IN FIELD - TYP.

(N) 2X6 @ 16" O.C. BEARING WALL OVER (N) ENTRY FLOOR DECK TO (E) JOIST BEARING

(E) MASONRY WALLS

SECTION A 3/4"=1'-0



SEE ARCH FOR WALL HEIGHT / FINISHES - TYP.

VERIFY EXTENTS W/ ARCHITECTURAL PLANS & IN FIELD - TYP.

(E) 5"± CONCRETE OVER 1" BOARD DECKING OVER FLOOR FRAMING TO REMAIN - TYP. UNO

(N) 9-1/4" LVL LEDGER @ (E) FLOOR DECK SUPPORT FASTENED TO (N) BEARING WALL W/ (2) 1/4" RSS SCREWS @ 16" O.C. INTO 2X VERTS OF (N) BEARING WALL - ADD BLOCKING AS NEEDED AT CONNECTION

BLOCKING @ DECK & @ 4' O.C. MIN.

(N) 2X4 @ 16" O.C. FULL HEIGHT WALL

5/8"Ø X 8" GALV WEDGE ANCHOR @ 24" O.C.

DOUBLE P.T. BOTTOM PLATE

(N) 20" WIDE X 10" DEEP FOOTING W/ (2) #4 CONT. ON UNDISTURBED COMPACTED SOIL CUT & FLUSH WITH (E) SLAB ON GRADE @ WALL ABOVE

SAW CUT EXISTING SLAB FOR NEW FOOTING

SECTION B 3/4"=1'-0

Structural Integrity  
Consulting Engineers, Inc.  
77 Oak Street  
Portland, ME, 04101  
p. 207-774-4614  
f. 866-793-7835  
www.structuralintegrity.com  
SI # 16-0133  
BUILD WITH CONFIDENCE  
© 2012 Structural Integrity Consulting Engineers, Inc.