

© 2015 RYAN SENATORE ARCHITECTURE

LAYFAYETTE BUILDING RENOVATION
PARK STREET
PORTLAND, MAINE



RYAN SENATORE
ARCHITECTURE
665 CONGRESS ST. SUITE 304
PORTLAND, MAINE 04101
207-650-6414
senatorearchitecture.com

CONSULTANTS:
STRUCTURAL:
Structural Integrity
77 Oak Street
Portland, ME 04101
207-774-4614

REVISIONS:

DATE: 29 September, 2016

PROJECT No. 1621

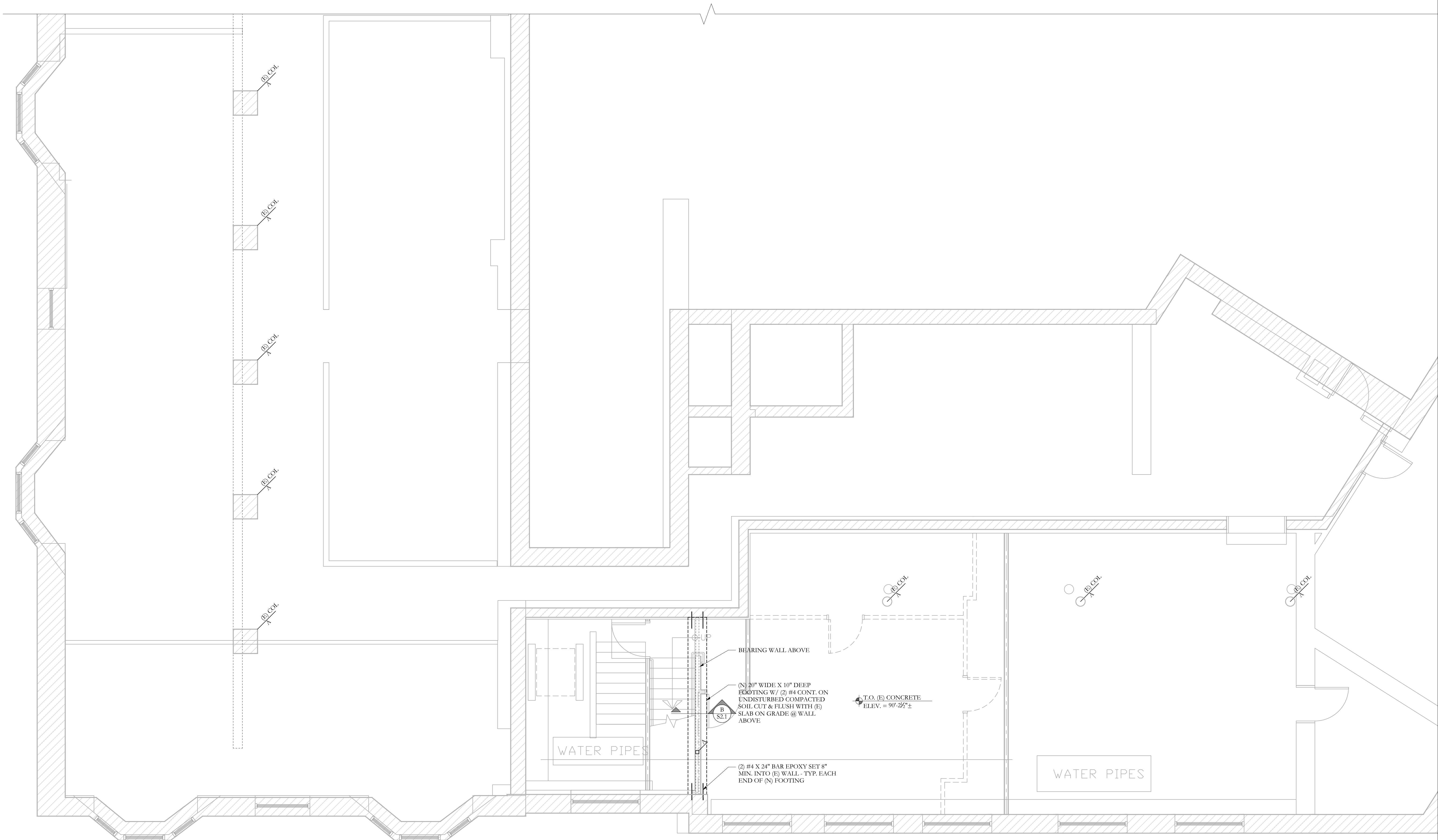
DRAWN BY: WMc

CHECKED BY: ACJ

SCALE: AS NOTED

SHEET TITLE:
FOUNDATION PLAN

S-1.1



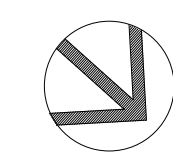
WATER PIPES

WATER PIPES

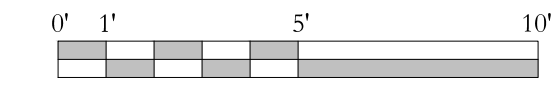
BEARING WALL ABOVE
(N) 20" WIDE X 10" DEEP FOOTING W/ (2) #4 CONT. ON UNDISTURBED COMPACTED SOIL CUT & FLUSH WITH (E) SLAB ON GRADE @ WALL ABOVE

T.O. (E) CONCRETE
ELEV. = 90'-2 1/2" ±


(2) #4 X 24" BAR EPOXY SET 8" MIN. INTO (E) WALL - TYP. EACH END OF (N) FOOTING



FOUNDATION PLAN



SCALE 1/4"=1'-0"

- NOTES:
1. SEE GENERAL NOTES FOR ADDITIONAL INFORMATION.
 2. TEMPORARY SHORING OF ALL REPAIR WORK BY CONTRACTOR -TYP
 3. (E) INDICATES EXISTING, (N) INDICATES NEW, (R) INDICATES REMOVE.
 4. ALL CONCRETE REINFORCING STEEL PER PLANS AND SECTIONS.
 5. STEP IN TOP OF FOUNDATION WALL IS INDICATED THUS: , AND SHOWS LOWER SIDE OF WALL.
 6. SEE S-1.0 FOR STRUCTURAL GENERAL NOTES

Structural Integrity
Consulting Engineers, Inc.
77 Oak Street
Portland, ME, 04101
p. 207-774-4614
f. 866-793-7835
www.structuralinteg.com
BUILD WITH CONFIDENCE

SI # 16-0133

© 2012 Structural Integrity Consulting Engineers, Inc.