

**NOTE:**  
REFER TO STRUCTURAL ANALYSIS REPORT & RECOMMENDATIONS BY: HUDSON DESIGN GROUP LLC., DATED: DECEMBER 29, 2015 (REV. 1) FOR AN ANALYSIS OF THE CAPACITY OF THE EXISTING STRUCTURES TO SUPPORT THE PROPOSED EQUIPMENT PRIOR TO COMMENCING CONSTRUCTION.

**NOTE:**  
REFER TO THE FINAL RF DATA SHEET FOR FINAL ANTENNA SETTINGS.

| EXISTING ANTENNA SCHEDULE |      |                    |                |         |
|---------------------------|------|--------------------|----------------|---------|
| SECTOR                    | MAKE | MODEL#             | SIZE (INCHES)  | AZIMUTH |
| ALPHA:                    | RFS  | APX16DWV_16DWVS_08 | 55.9x13.3x3.15 | 55°     |
| BETA:                     | RFS  | APX16DWV_16DWVS_08 | 55.9x13.3x3.15 | 130°    |
| GAMMA:                    | RFS  | APX16DWV_16DWVS_08 | 55.9x13.3x3.15 | 275°    |

| PROPOSED ANTENNA SCHEDULE |           |                    |                |         |
|---------------------------|-----------|--------------------|----------------|---------|
| SECTOR                    | MAKE      | MODEL#             | SIZE (INCHES)  | AZIMUTH |
| ALPHA:                    | RFS       | APX16DWV_16DWVS_08 | 55.9x13.3x3.15 | 55°     |
|                           | COMMSCOPE | LNX-6515DS-A1M     | 96.4x11.9x7.1  | 55°     |
| BETA:                     | RFS       | APX16DWV_16DWVS_08 | 55.9x13.3x3.15 | 130°    |
|                           | COMMSCOPE | LNX-6515DS-A1M     | 96.4x11.9x7.1  | 130°    |
| GAMMA:                    | RFS       | APX16DWV_16DWVS_08 | 55.9x13.3x3.15 | 275°    |
|                           | COMMSCOPE | LNX-6515DS-A1M     | 96.4x11.9x7.1  | 275°    |

**T-MOBILE NORTHEAST LLC**  
15 COMMERCE WAY, SUITE B  
NORTON, MA 02766  
OFFICE: (508) 286-2700  
FAX: (508) 286-2893

**smartlink**  
1997 ANNAPOLIS EXCHANGE PKWY  
SUITE 200  
ANNAPOLIS, MD 21401

**Hudson Design Group, Inc.**  
1600 OSGOOD STREET  
BUILDING 20 NORTH, SUITE 3090  
N. ANDOVER, MA 01845  
TEL: (978) 557-5553  
FAX: (978) 336-5586



CHECKED BY: AT

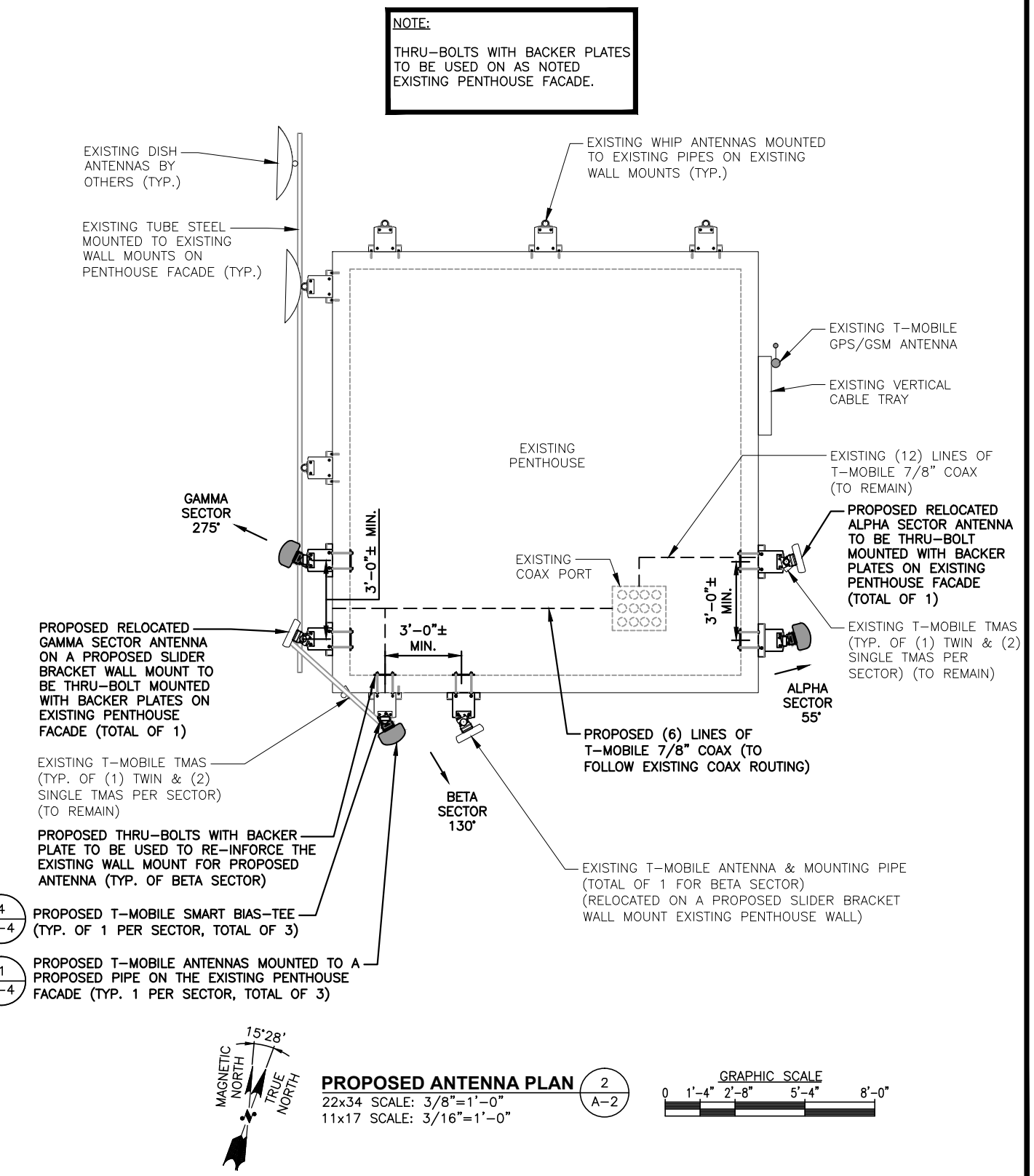
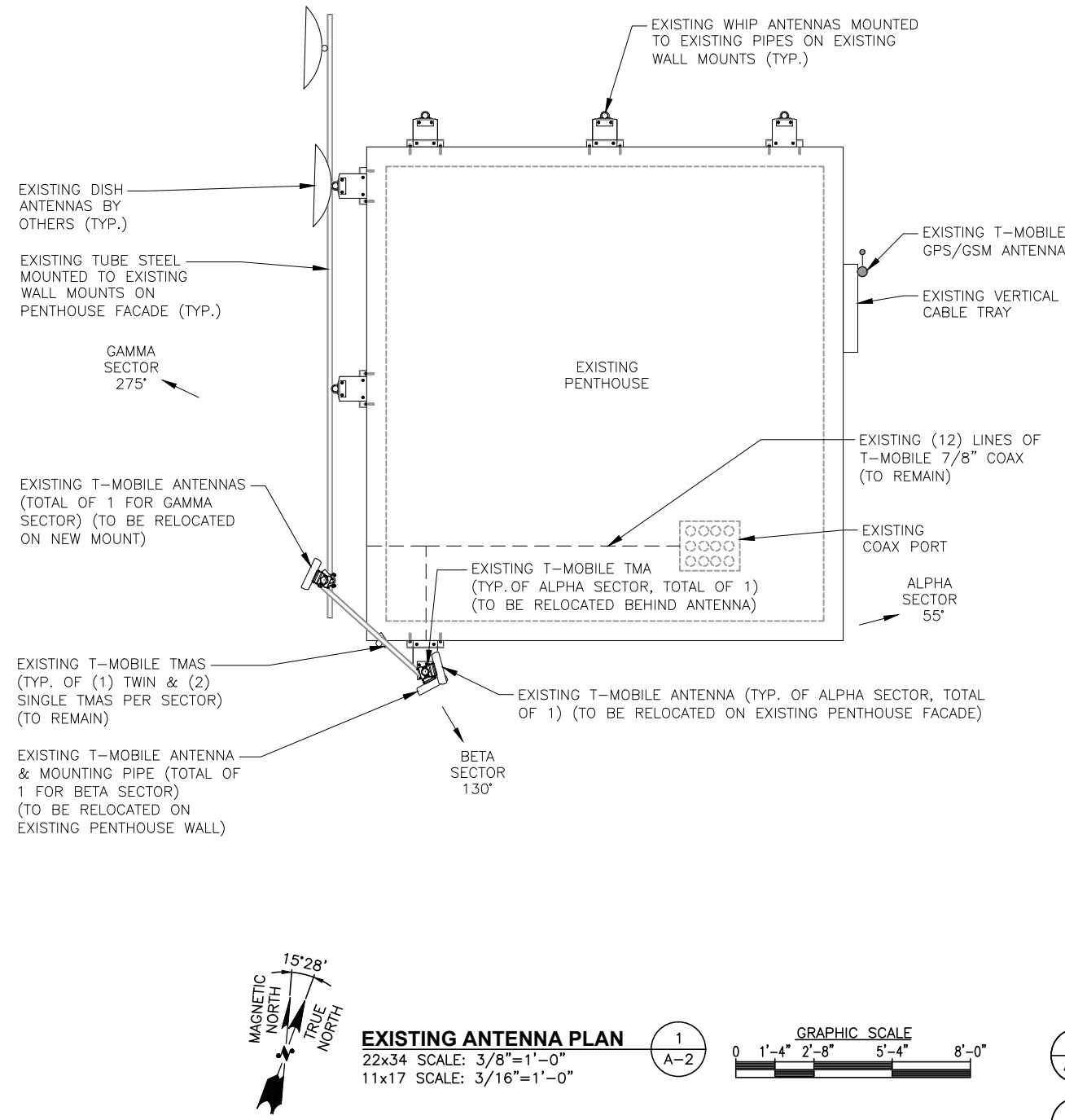
APPROVED BY: DJC

| SUBMITTALS |          |                         |    |
|------------|----------|-------------------------|----|
| REV.       | DATE     | DESCRIPTION             | BY |
| 2          | 01/07/16 | ISSUED FOR CONSTRUCTION | VP |
| 1          | 01/05/16 | REVISED PER COMMENTS    | VP |
| 0          | 12/08/15 | ISSUED FOR REVIEW       | VP |

SITE NUMBER:  
**4PB1259A**  
SITE NAME:  
PB259/COMFAC-LAFAYETTE  
SITE ADDRESS:  
638 CONGRESS STREET  
PORTLAND, ME 04101  
CUMBERLAND COUNTY

SHEET TITLE  
**EXISTING/PROPOSED ANTENNA PLANS**

SHEET NUMBER  
**A-2**



**NOTE:**  
THRU-BOLTS WITH BACKER PLATES TO BE USED ON AS NOTED EXISTING PENTHOUSE FACADE.