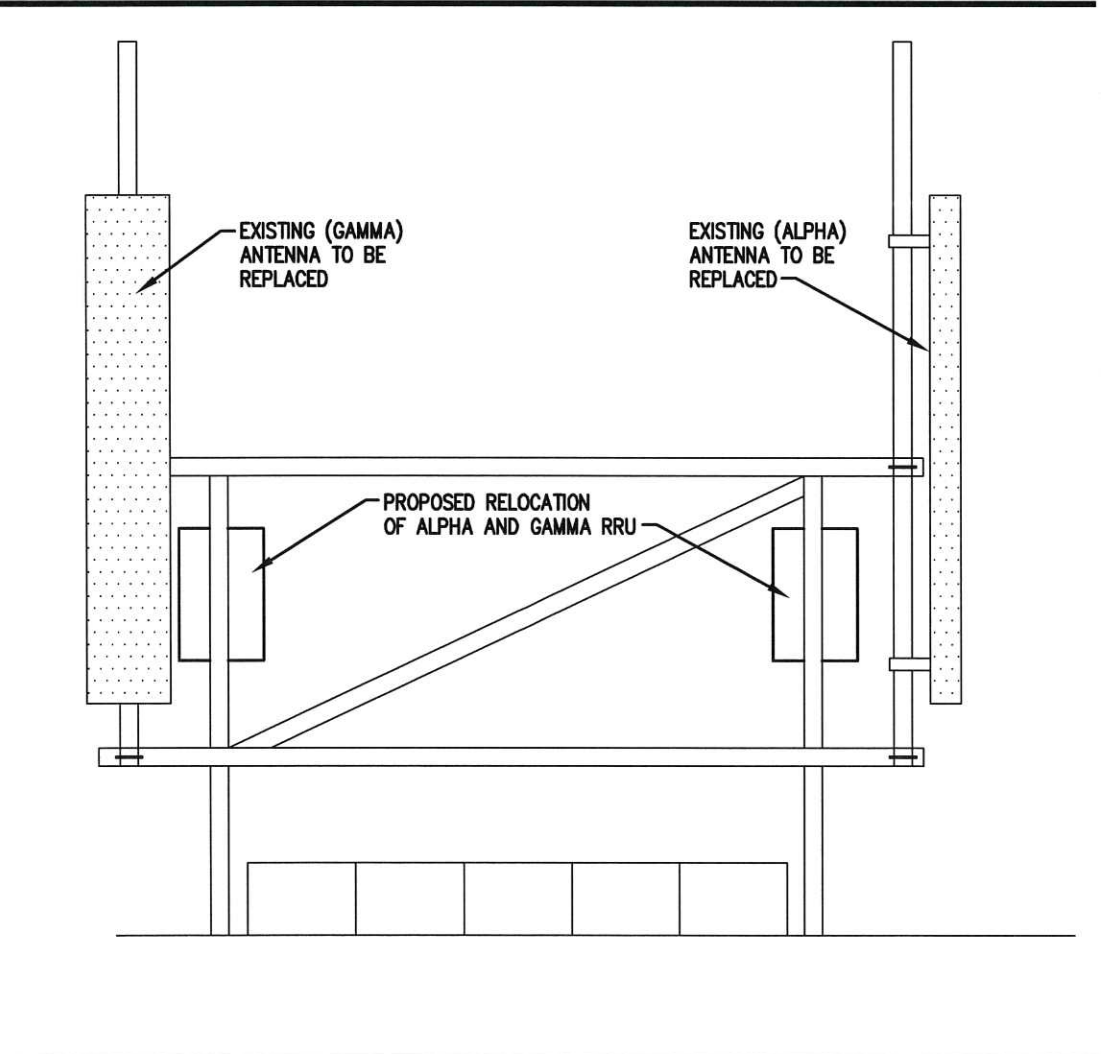
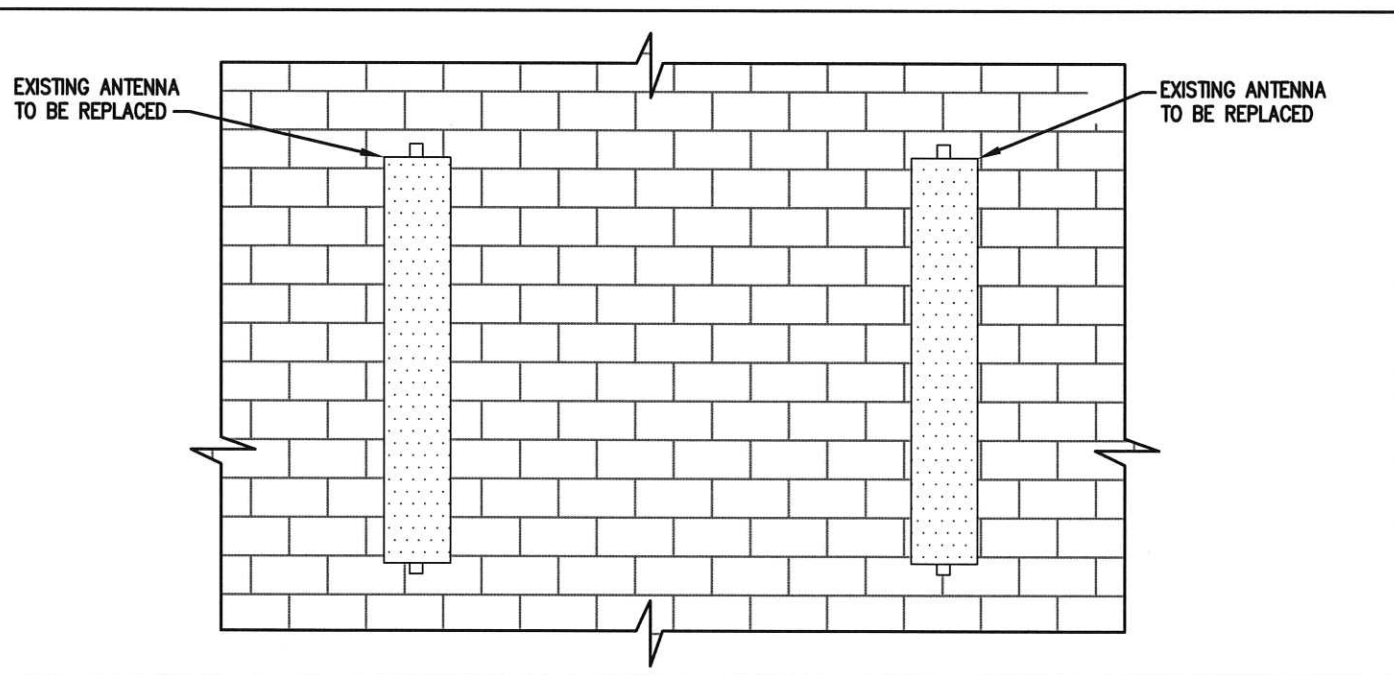


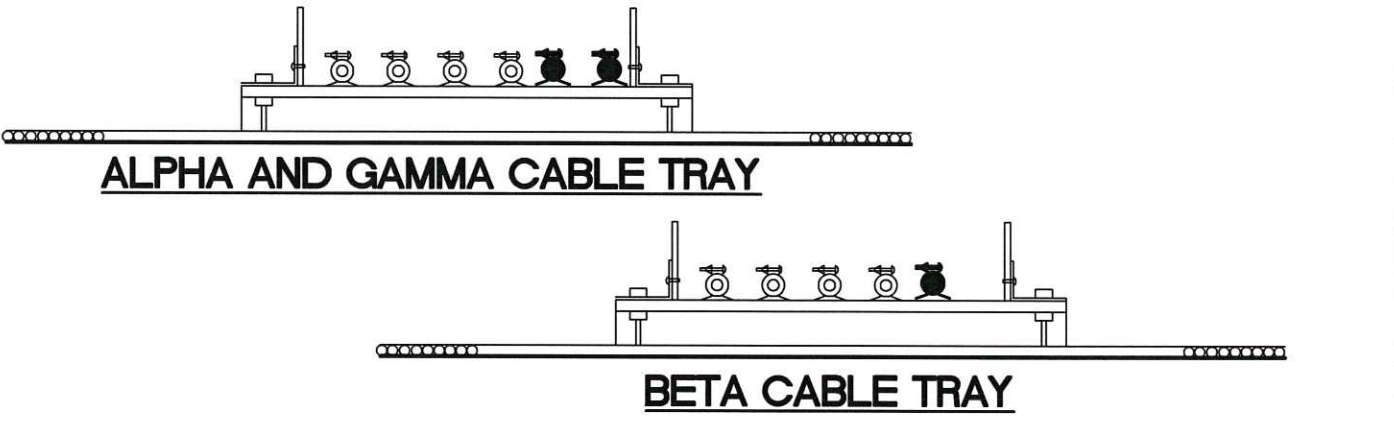
**PROPOSED BETA RRU STAND**  
SCALE: N.T.S.



**EXISTING ALPHA AND GAMMA SLED MOUNT**  
SCALE: N.T.S.



**EXISTING BETA ANTENNA MOUNTED TO SIDE OF BUILDING**  
SCALE: N.T.S.



**PROPOSED CABLE TRAY CONFIGURATION**  
SCALE: N.T.S.

EXISTING ANTENNA/COAX SCHEDULE					
SECTOR	MANUFACTURER (MODEL #)	MOUNTING HEIGHT	AZIMUTH	COAX SIZE	NOTES
ALPHA	FR65-17-04DP	☉ 91'-0"	300°	(2) 1 5/8"	ANTENNA TO BE REMOVED, CABLES TO REMAIN AND BE ATTACHED TO PROPOSD ANTENNA
BETA	FV65-17-04DP	☉ 81'-6"	100°	(2) 1 5/8"	
BETA	FV65-17-04DP	☉ 81'-6"	100°	(2) 1 5/8"	
GAMMA	FR65-17-04DP	☉ 91'-0"	210°	(2) 1 5/8"	

PROPOSED ANTENNA/COAX SCHEDULE						
SECTOR	TECHNOLOGY	MANUFACTURER (MODEL #)	MOUNTING HEIGHT	AZIMUTH	COAX SIZE	COAX LENGTH
ALPHA	LTE BAND 2	800 10510V01 (QUAD PORT)	☉ 91'-0"	300°	(2) 1 5/8"	240'±
BETA	LTE BAND 2	BXA-185063-BCF-EDIN-2	☉ 81'-6"	100°	(2) 1 5/8"	290'±
BETA	LTE BAND 2	BXA-185040-BCF-EDIN-4	☉ 81'-6"	100°	(2) 1 5/8"	290'±
GAMMA	LTE BAND 2	800 10510V01 (QUAD PORT)	☉ 91'-0"	210°	(2) 1 5/8"	240'±

PLEASE REFER TO ONE-LINE DIAGRAM (E-1) FOR WIRING SCHEMATIC

PLANS PREPARED FOR:

**US Cellular**  
We connect with you  
10 Corporate Drive, Suite 210, Bedford, NH 03110

PROJECT INFORMATION  
**853419-LAFAYETTE APARTMENTS**  
638 CONGRESS STREET  
PORTLAND, ME 04101  
(CUMBERLAND COUNTY)

PLANS PREPARED BY:

**amec**  
511 Congress St, Portland ME 04101  
P: (207) 828-2623 F: (207) 774-1246 www.amec.com

PROJECT COORDINATION & MANAGEMENT:

**KJK Wireless, LLC**  
127 Ridge Road, Nashua, NH 03062  
Phone: (603) 888-8974

SEAL

REV	DATE	ISSUED FOR
△	9/30/14	ISSUED FOR CONSTRUCTION

PROJECT NO: 3618148348

DRAWN BY: CBM

RELEASED BY: MSD

SHEET TITLE  
**ANTENNA MOUNTING DETAILS AND COAX LAYOUT**

SHEET NUMBER	REVISION:
<b>C-4</b>	<b>0</b>