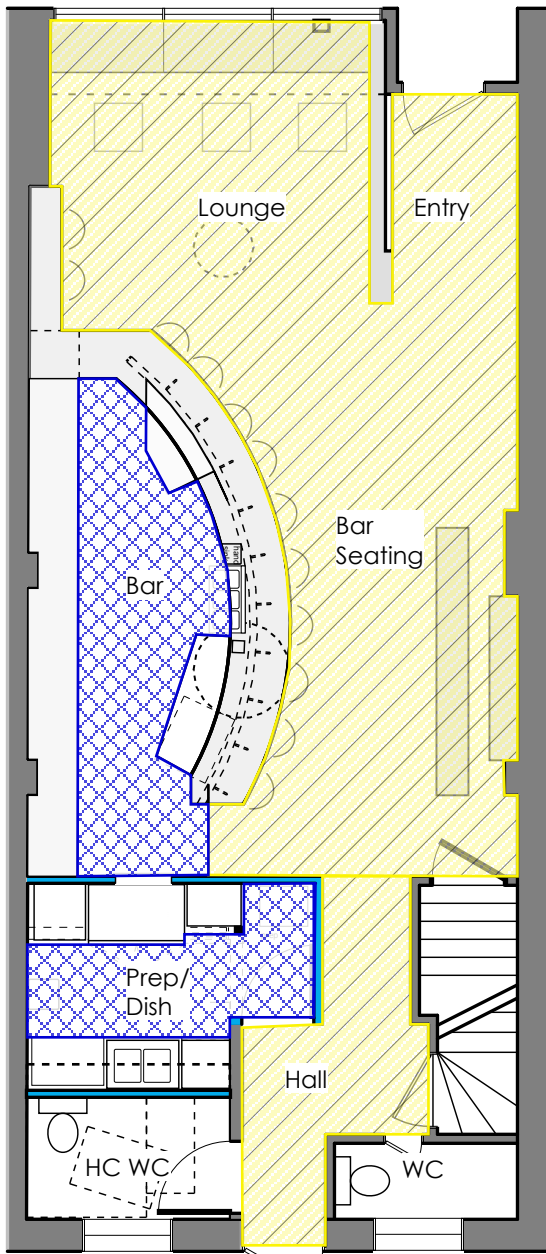
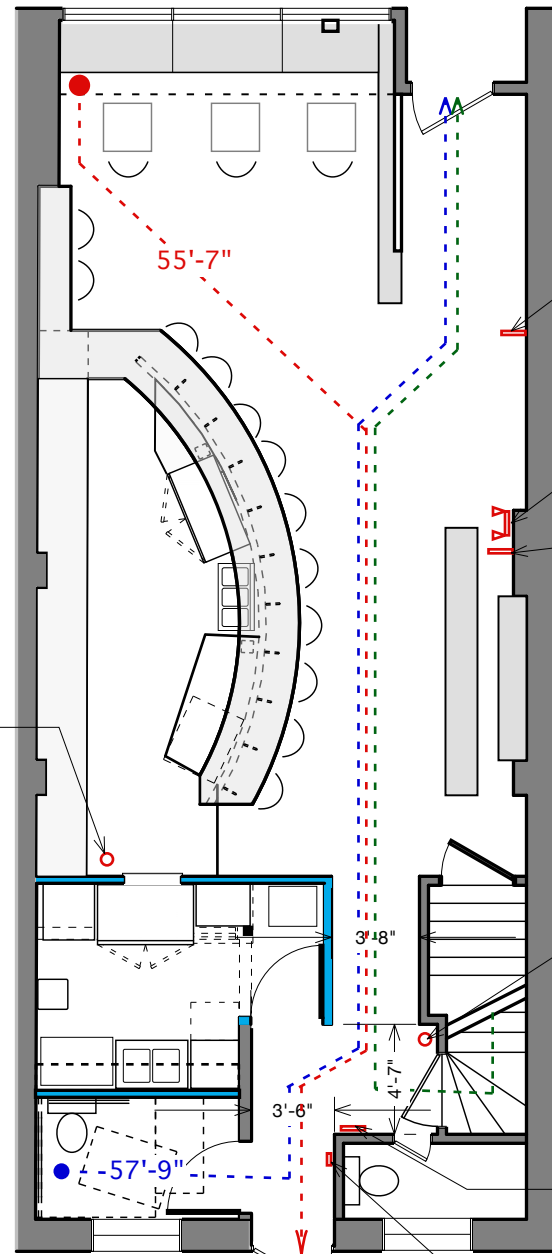


Occupancy

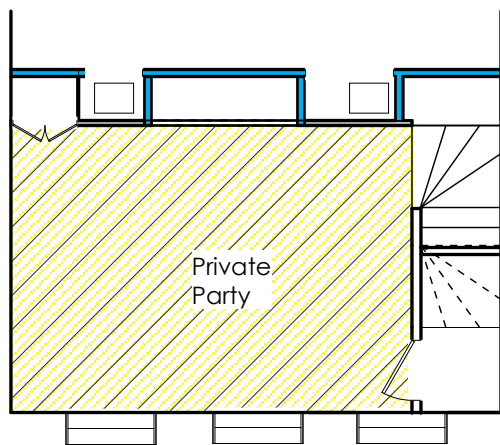
Life Safety



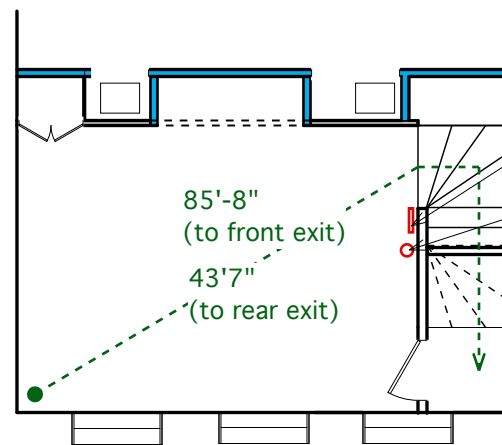
First Floor



First Floor



Mezzanine Plan



Mezzanine Plan

Ground Level

Total sq ft - 960	
540 - public space	@15 sq. ft/ pp = 36
147 sf ft - employee only space	@200 sq. ft/ pp = 1
maximum actual staff on duty at one time= 4	

Mezzanine Level

Total sq ft - 213	
196 sq ft - private office space	@15 sq. ft/ pp = 13
23 sf ft - locked storage	

employee only



public



Total Occupancy - 53



The Jewel Box

644 Congress St
Portland, Maine

LIFE SAFETY
Fire Egress &
Occupant Load

LS1

scale: 1/8" = 1'-0"

1.30.14

Prepared for
Nathaniel Meiklejohn by:
Petra Simmons Design
207.632.2625

PERMIT SET _
NOT FOR CONSTRUCTION