

Finish Schedule

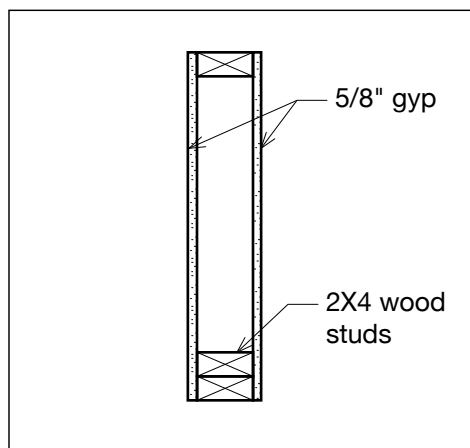
Room		Floor	Walls	Ceiling
100	Entry	3 1/4" White Oak, stained	Paint/ Fire Safe Wallpaper	Paint
101	Lounge	3 1/4" White Oak, stained	Paint	Paint
102	Bar Seating	3 1/4" White Oak, stained	Paint	Paint
103	Bar	Non-slip, heat sealed comm. sheet flrg	Paint	Paint
104	Hall	3 1/4" White Oak, stained	Paint	Paint
105	Food prep/dish	Non-slip, heat sealed comm. sheet flrg	Paint w/ FRP panels to 42"	Paint
106	HC WC	comm. sheet flrg	Paint	Paint
107	Ex. WC	comm. sheet flrg	Paint	Paint
108	Stair	Repair treads as needed	Paint	Paint
200	Party	3 1/4" White Oak, stained	Paint	Paint
201	Storage	Paint and seal	Paint	Paint

Door Schedule

Door	Room	Size	Rating	Material	Finish	Hardware
100.1	Entry	existing	n/a	Wood	New Paint	TBD
102.1	Basement	existing	1 hr	Metal	New Paint	F82B - Entry
104.1	Hall/ Egress	existing	1 hr	Metal	New Paint	existing - panic bar - no change
105.1	Food prep/dish	3'-0" X6'-8"	n/a	Wood	Paint	F75 - Passage
106.1	HC WC	3'-0" X6'-8"	n/a	Wood	Paint	F76A -Privacy
107.1	Ex. WC	existing	n/a	Wood	New Paint	New F76A -Privacy
108.1	Ex. Stair	remove existing	n/a	n/a	n/a	n/a
201.1	Storage	2'-6" X6'-8"	n/a	Wood	Paint	F86 - Storeroom

NOTE:

1. All new doors to be Mohawk Commercial Series or equal, flat panel, solid core wood or MDF
2. All door hardware to be chrome finish with ADA accessible lever type handsets (see schedule for functions)



Typical New Wall Section

The Jewel Box

644 Congress St
Portland, Maine

Schedules

A4

scale: as noted

1.30.14

PERMIT SET _
NOT FOR CONSTRUCTION

Prepared for
Nathaniel Meiklejohn by:
Petra Simmons Design
207.632.2625