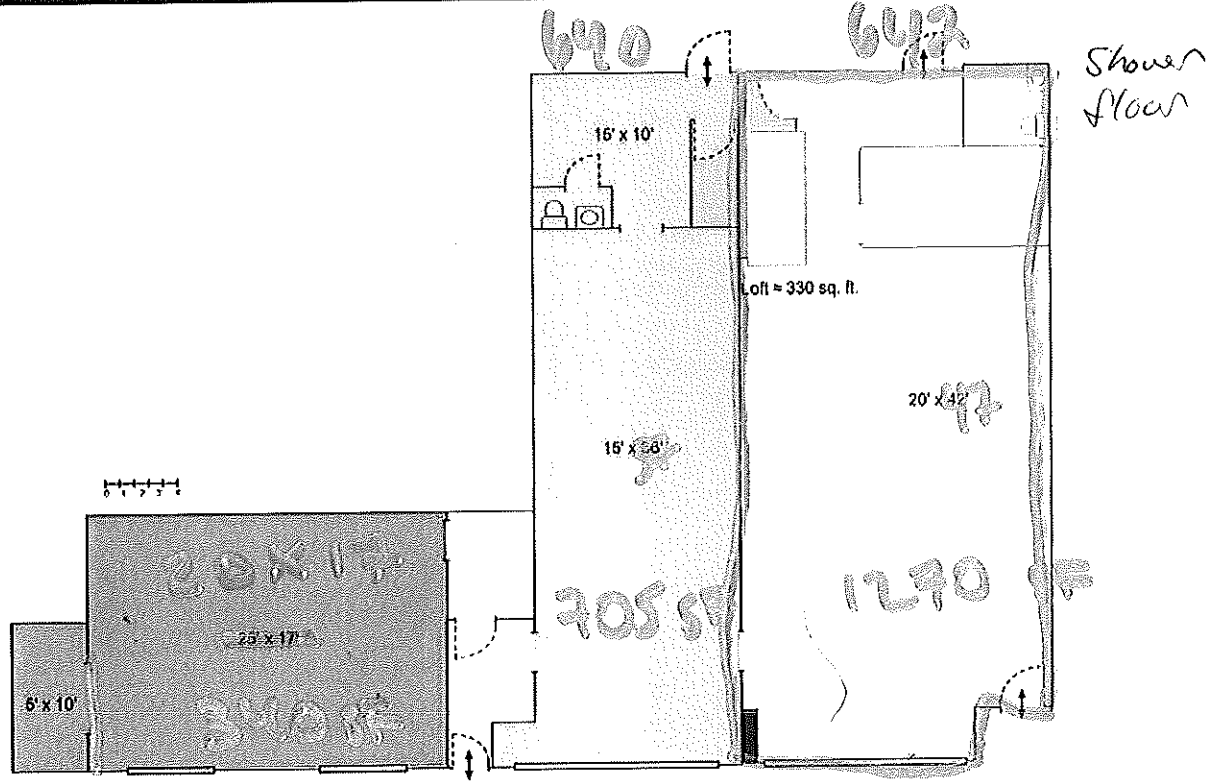


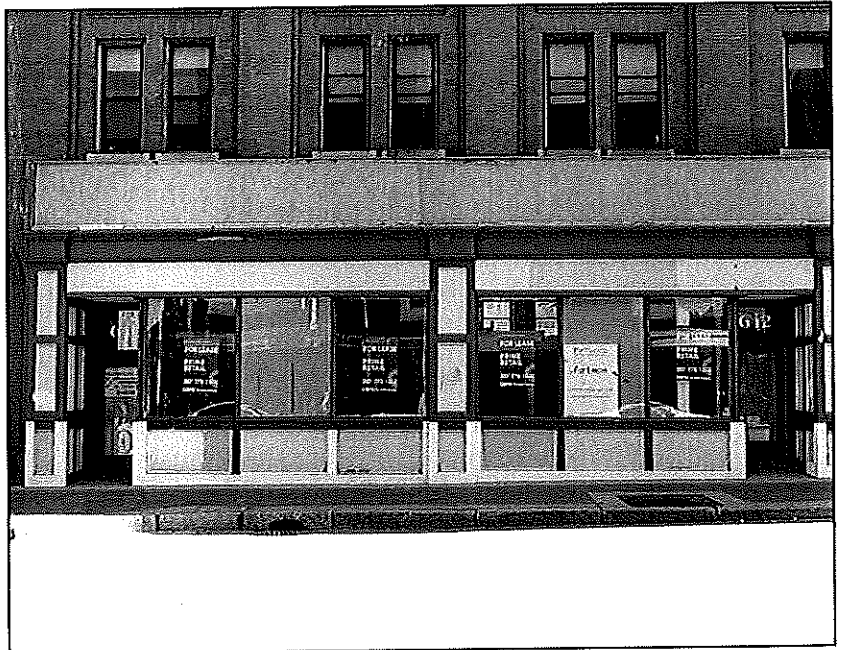
FOR
LEASE



640-642
CONGRESS
STREET PORTLAND, MAINE



Available Space: ~~2351~~ ~~310~~ **475 - 2,335± sf**
HVAC: ~~1045 sf~~ Gas - forced hot water baseboard
Sprinklers: Yes
Water/Sewer: Municipal
Zoning: B-3 - Downtown Business
DEOZ - Downtown Entertainment Overlay Zone
Lease Rate: \$12.00/sf MG



FOR MORE INFORMATION CONTACT:
Joseph Porta - jporta@boulos.com
Ty Hobbs - thobbs@boulos.com

CBRE | The Boulos Company | One Canal Plaza | Suite 500 | Portland, ME 04101 | 207.772.1333 | www.boulos.com

©2013, CBRE | The Boulos Company. We obtained the information above from sources we believe to be reliable. However, we have not verified its accuracy and make no guarantee, warranty or representation about it. It is submitted subject to the possibility of errors, omissions, change of price, rental or other conditions, prior sale, lease or financing, or withdrawal without notice. We include projections, opinions, assumptions or estimates for example only, and they may not represent current or future performance of the property. You and your tax and legal advisors should conduct your own investigation of the property and transaction. CBRE | The Boulos Company is representing the Seller/Landlord, and, as such, has a fiduciary duty to disclose to the Seller/Landlord information which is material to the Sale/Lease, acquired from the Buyer/Tenant or any other source, except in cases of disclosed dual agency.