

DOOR SCHEDULE

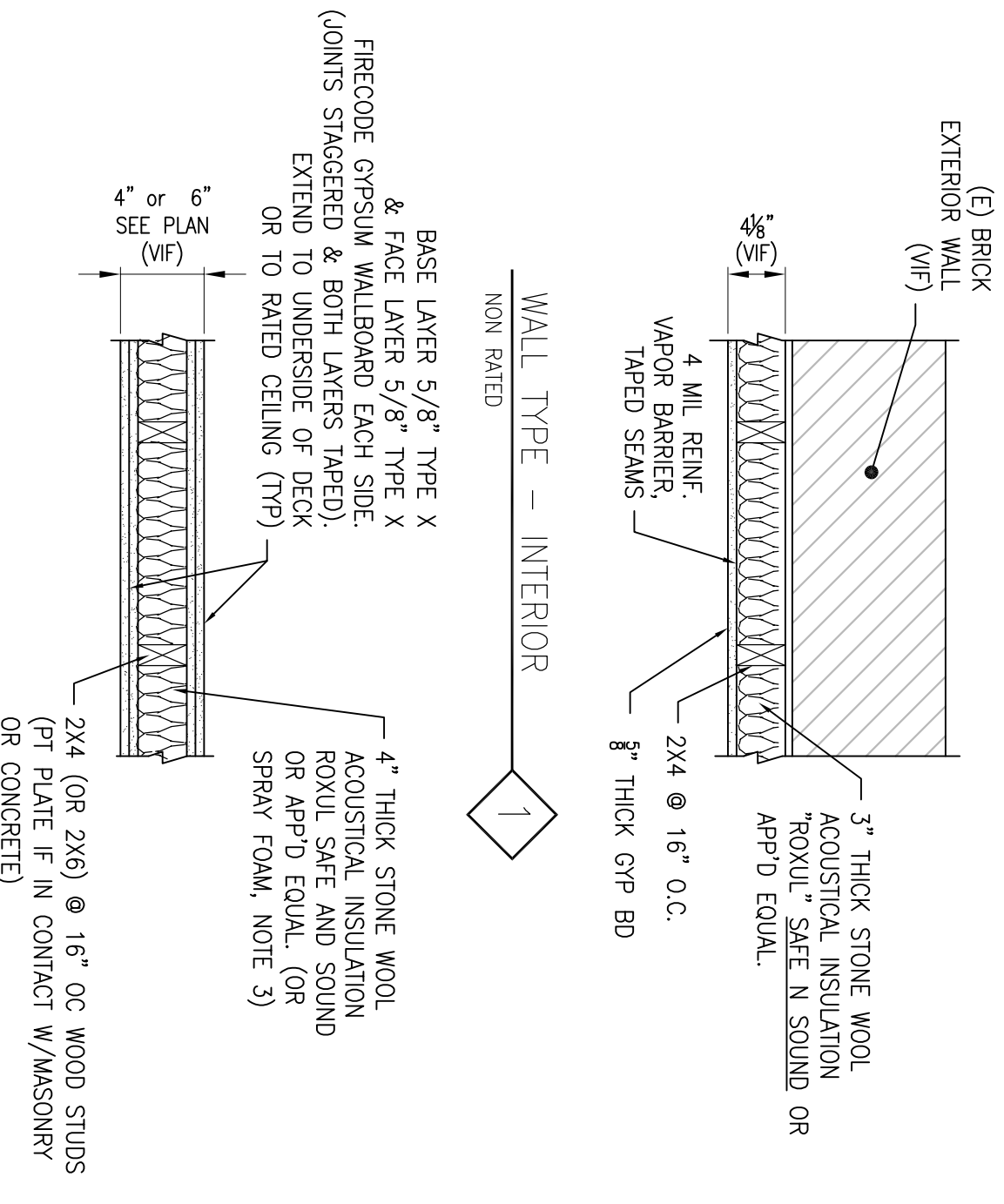
MARK	ROOM	TYPE	SIZE	THK.	F.R.	HDWF SET	MAT.	GLASS		REMARKS	FRAME TYPES		THRESHOLD		REMARKS
								SIZE	TYPE		HEAD	JAMB	MAT.	SILL	
101	STORAGE	A	2'-8" x 7'-0"	-	-	LEVER	WOOD	-	-	HA, OLO, DS1, OS, DS1, WS	AA	BB	-	-	SELF-CLOSING AND WEATHERSTRIPPED, NON-LOOKING FROM EGRESS SIDE. DOOR & JAMBS PAINTED DARK BROWN TO MATCH EXISTING TRIM COLOR. SEE PHOTO ON DRAWING AS
102	RESTROOM	B	2'-8" x 7'-0"	-	-	LEVER	WOOD	-	-	PS, DS1, DS1	-	-	-	-	

DOOR SCHEDULE ABBREVIATIONS

CLO.	CLOSER	FR	FIRE RATED	HM	HOLLOW METAL	P	DOOR PULL	S.C.	SOLID CORE HARDBOARD	UC	UNDERCUT
DSI	DOOR SILENCERS	FRG	FIRE PROTECTION RATED GLAZING	INS	INSULATED	PS	PASSAGE SET	S.H.	SPRING HINGE	WG	WOOD (SOUND)
D.S.	DOOR SWEEP	HO	HOLD OPEN ARM	K	KICKPLATE (PUSH SIDE)	P.H.	FREE EXIT PANIC HARDWARE (NOTE 3)	S.J.	SPLIT JAMB (WOOD)	WR	WIRE GLASS
DS1	DOOR STOP	HA	HANDICAP ACCESSIBLE	KL	KEY LOCK	P.P.	ROSH PLATE	TEMP	TEMPERED	V	WEATHERSTRIPPING
EHO	ELECTRO. HOLD OPENER	HC	HOLLOW CORE HARDBOARD	LC	FULL HEIGHT LOCKING CHANNEL	P.S.	ROSH SET	TL	THUMB LATCH	VV	WEATHER
ES	ELECTRIC STRIKE	HW	HARDWARE	ML	METAL	S	STEEL	THK	THICKNESS	VV	VERIFY IN FIELD
F.J.P.	FINGER JOINTED FRAME	NO	NUMBER	ML	METAL	S	SPRUE, FINE, FR	VF	VERIFY IN FIELD	VL	VENT LOUVER (Lower)

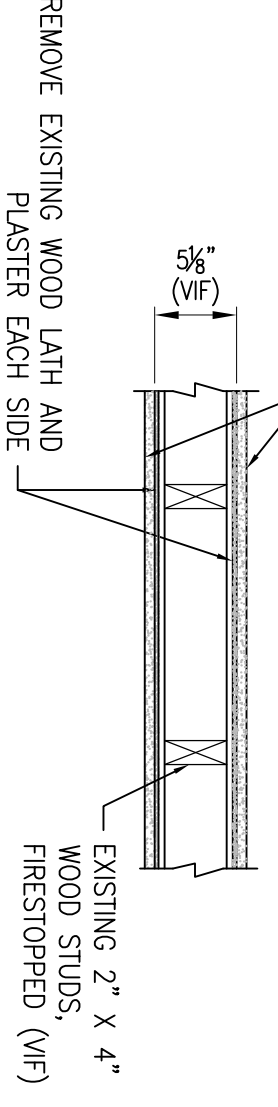
NOTES:

- GC VERIFY EXISTING DOOR ROUGH OPENINGS AND EXISTING WOOD FRAME DIMENSIONS PRIOR TO ORDERING DOORS & FRAMES. CONFIRM SMOKE SEALS AT ALL TOP, 20 MINUTE AND 1 HOUR DOORS. SEAL ANY GAPS.
- GC SHALL CONFIRM MASONRY OPENINGS IN FIELD PRIOR TO ORDERING EXTERIOR DOORS.



WALL TYPE - INTERIOR
2HR FIRE RESISTANCE RATED
U/L DESIGN NO. U301

BASE LAYER 5/8" TYPE X & FACE LAYER 5/8" TYPE X FIRE CODE GYPSUM WALLBOARD EACH SIDE. (JOINTS STAGGERED & BOTH LAYERS TAPERED.)
EXTEND FROM TOP OF FLOOR SHEATHING TO UNDERSIDE OF FLOOR SHEATHING ABOVE (TYP)

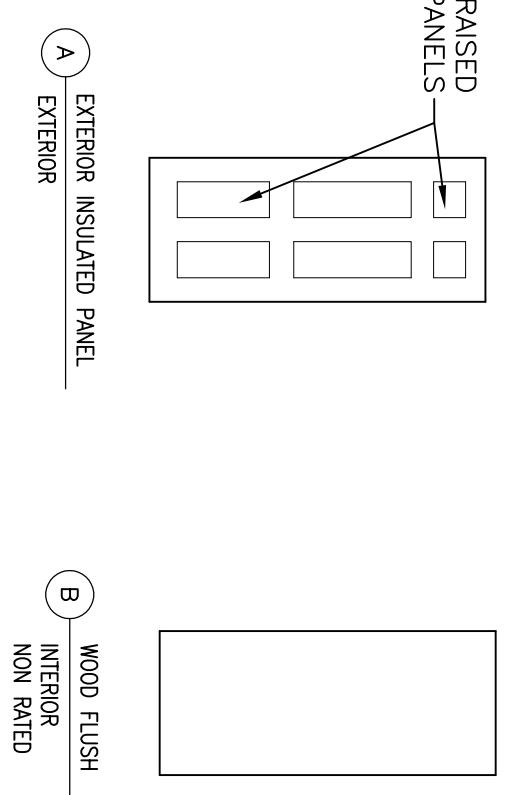


WALL TYPE - EXISTING INTERIOR
EXISTING (W/F)
2HR FIRE RESISTANCE RATED
U/L DESIGN NO. U301

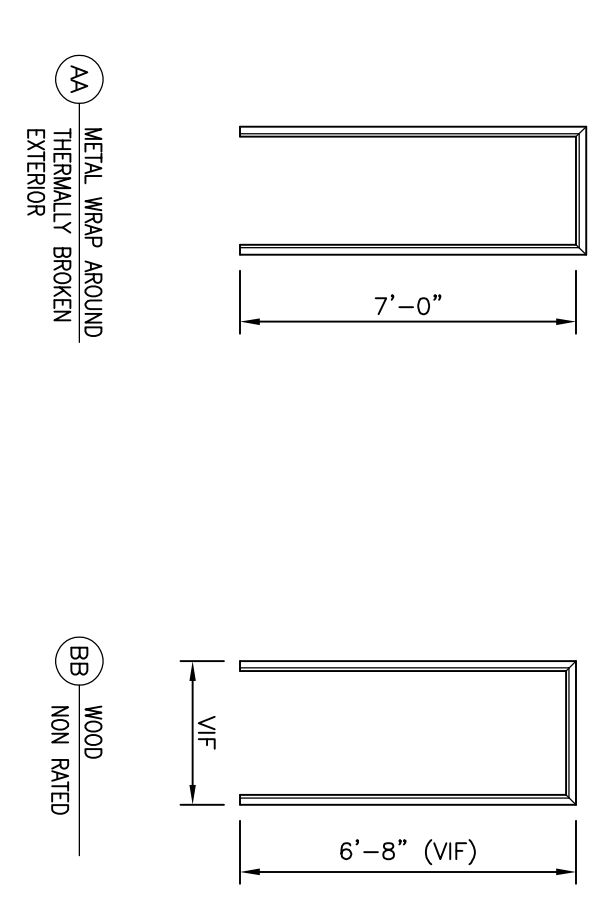
WALL TYPES

- NOTES:**
- EXTEND ALL FIRE RATED WALLS FROM FLOOR TO PERSE OF FLOOR/ROOF DECK. SEAL ALL PENETRATIONS, CRACKS & VOIDS WITH 2 HOUR FIRE SIKING. TYP.
 - GC VERIFY EXISTING WALL MATERIALS AND FINISHES.
 - SPRAY FOAM INSULATION SHALL BE HIGH DENSITY CLOSED CELL TYPE WITH DENSITY OF MINIMUM 2.0 LB/FT³ CONFORMING TO ASTM C1029, Type I & II. INSTALL CLASS 1 VAPOR BARRIER IF NECESSARY TO MEET VAPOR PENMEANCE OF LESS THAN 0.1 PERM. TYP. APPLICATION SHALL BE BY QUALIFIED, EXPERIENCED CONTRACTOR.
 - EXISTING WOOD LATH AND PLASTER MAY BE RETAINED PROVIDED LATH IS MINIMUM 3/8" THICK PERFORATED OR PLAN AND PLASTER IS MINIMUM 1/2" THICK (THIS PROVIDES A 1 HOUR RATING). GC SHALL VERIFY THESE MINIMUMS IN FIELD TO RETAIN. AND THEN PROVIDE ADDITIONAL LAYER OF 5/8" THICK TYPE X FIRE CODE GYP BD OVER EXISTING LATH/PLASTER ON EACH SIDE TO ACHIEVE 2 HR FIRE RATING.

DOOR TYPES



FRAME TYPES



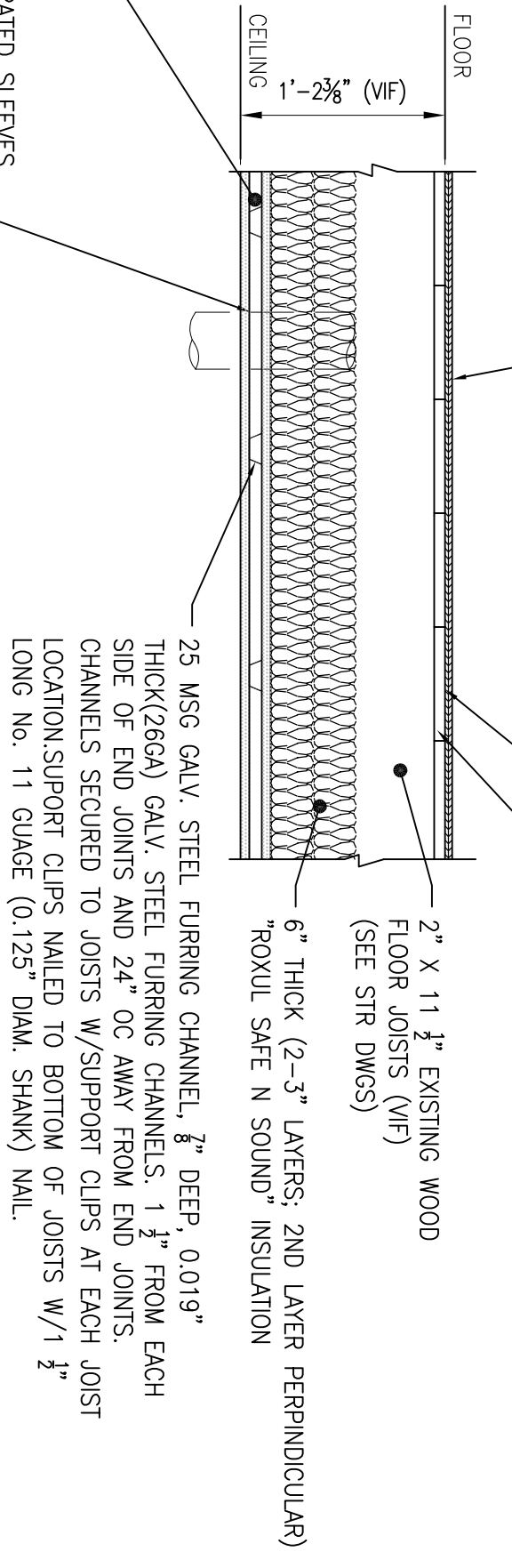
MIN. 1/2" THICK APA RATED FLOOR SHEATHING
END JOINTS STAGGERED, FASTEN W/NO. 8d CEMENT
COATED SINKERS. NAILS SPACED 12" OC ALONG EACH
JOIST. FACE GRAIN OF PLYWOOD OR STRENGTH AXIS
OF PANEL TO BE PERPENDICULAR TO (E)1X SUB FLOOR.
WITH JOINTS STAGGERED.

2 LAYERS 3/8" THICK TYPE X GYP BD. WITH
METAL FURRING CHANNEL BETWEEN LAYERS.
BASE LAYER 3/8" THICK TYPE X FIRECODE
GYPSUM BOARD INSTALLED WITH LONG
DIMENSION PERPENDICULAR TO FLOOR JOISTS.
FASTEN TO JOISTS W/ UNCOATED 8d BOX NAILS
SPACED 7" O.C. ALL NAILS LOCATED 1/2" MIN
FROM EDGES AND ENDS OF THE BOARD.
JOINTS COVERED W/ PAPER TAPE AND
COMPOUND.

SECOND LAYER INSTALLED WITH LONG
DIMENSION PERPENDICULAR TO METAL
FURRING CHANNELS.
SECURE TO CHANNELS W/ 1" LONG
WALLBOARD SCREWS 12" O.C. WITH ADD'L
SCREWS 3" FROM SIDE JOINTS. ALL SCREWS
LOCATED MIN. 1" FROM EDGES OF BOARDS.
JOINTS COVERED W/ PAPER TAPE AND
COMPOUND.

2 HR RATED FIRE SIKING OR RATED SLEEVES
AS REQD BY CODE AROUND ALL PENETRATIONS
FOR SMOKE/TIGHT SEAL. SEE NOTES, TYP.

FLOOR/CEILING ASSEMBLY
U/L DESIGN NO. 1505 (System No. 1)
(2 HOUR UNRESTRAINED ASSEMBLY RATING)



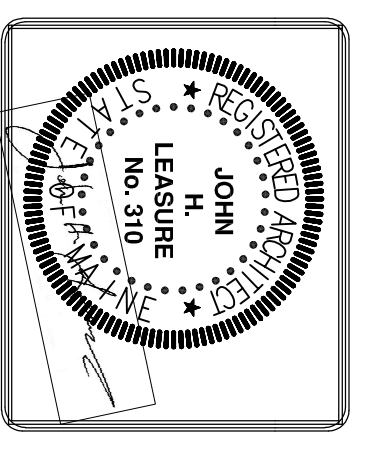
GC VERIFY EXISTING EQUIPMENT, PIPING, STRUCTURE OR
OTHER INTERFERENCES PRIOR TO INSTALLATION.

CEILING TYPES

DOOR NOTES

- SPECIFIC SELECTION OF DOOR TYPES, THICKNESS, VENEER, HINGES, LEVER HANDLES, CLOSERS, PANIC BARS, GLASS LITES, TRIM AND OTHER RELATED DOOR HARDWARE BY OWNER/G.C. TYP)
- ALL DOORS SHALL BE EQUIPPED WITH LEVER TYPE HANDLES (UON) AND SHALL BE ADA COMPLIANT. OPERABLE PARTS SHALL BE 34" MIN. TO 48" MAX ABOVE FINISHED FLOOR. HANDLE SHALL BE 1 1/2" DIA. TO 1 3/4" DIA. HANDLE TO BE GRASPING, PINCHING, OR TWISTING OF THE WRIST. THE FORCE REQUIRED TO ACTIVATE OPERABLE PARTS SHALL BE 5 POUNDS (22.2N) MAXIMUM.
- DOOR CLOSERS SHALL BE ADJUSTED SO THAT FROM AN OPEN POSITION OF 90 DEGREES, THE TIME REQUIRED TO MOVE THE DOOR TO A POSITION OF 12 DEGREES FROM THE LATCH IS 5 SECONDS, MINIMUM. SPRINGS SHALL BE SELECTED, SHALL BE MOUNTED ON ALL THREE DOOR HINGE LOCATIONS. TYP.
- FIRE EXIT PANIC HARDWARE SHALL CONSIST OF LISTED FIRE LABEL WITH LATCHING MECHANISM ON LABELED FIRE RATED DOORS. REQUIRED FIRE EXIT HARDWARE SHALL NOT BE EQUIPPED WITH ANY LOCKING DEVICE, SET SCREW, OR OTHER ARRANGEMENT THAT PREVENTS THE RELEASE OF THE LATCH WHEN PRESSURE IS APPLIED TO THE RELEASES DEVICE.
- GC SHALL VERIFY EXISTING EGRESS DOORS AND FRAMES OPENINGS - VERIFY TYPES, SIZES, THRESHOLDS ACCEPTABLE WORKING ORDER AND HARDWARE AS INDICATED IN THIS SCHEDULE (NOTIFY ARCHITECT/ENGINEER OF ANY DEFICIENCIES, APPROVALS NEEDED)
- CONTRACTOR SHALL SUBMIT DOOR AND HARDWARE SHOP DRAWINGS FOR APPROVAL PRIOR TO ORDERING OR INSTALLATION.
- REFER TO NOTES ON DRAWING AT FOR 20 MINUTE & 1 HOUR FIRE RATED DOORS
- CONTRACTOR VERIFY ALL DIMENSIONS AND EXISTING STAMS. DOOR ROUGH OPENINGS AND WALL LOCATIONS IN FIELD. TYP.

REV.	DATE	STATUS
0	9-21-17	PERMIT SUBMISSION



JOHN H. LEASURE ARCHITECT, INC.
6 Q STREET
SOUTH PORTLAND, MAINE 04106

PROPOSED STORAGE ROOM
658 CONGRESS STREET
PORTLAND, MAINE
DOOR SCHEDULE, WALL & CEILING TYPES

