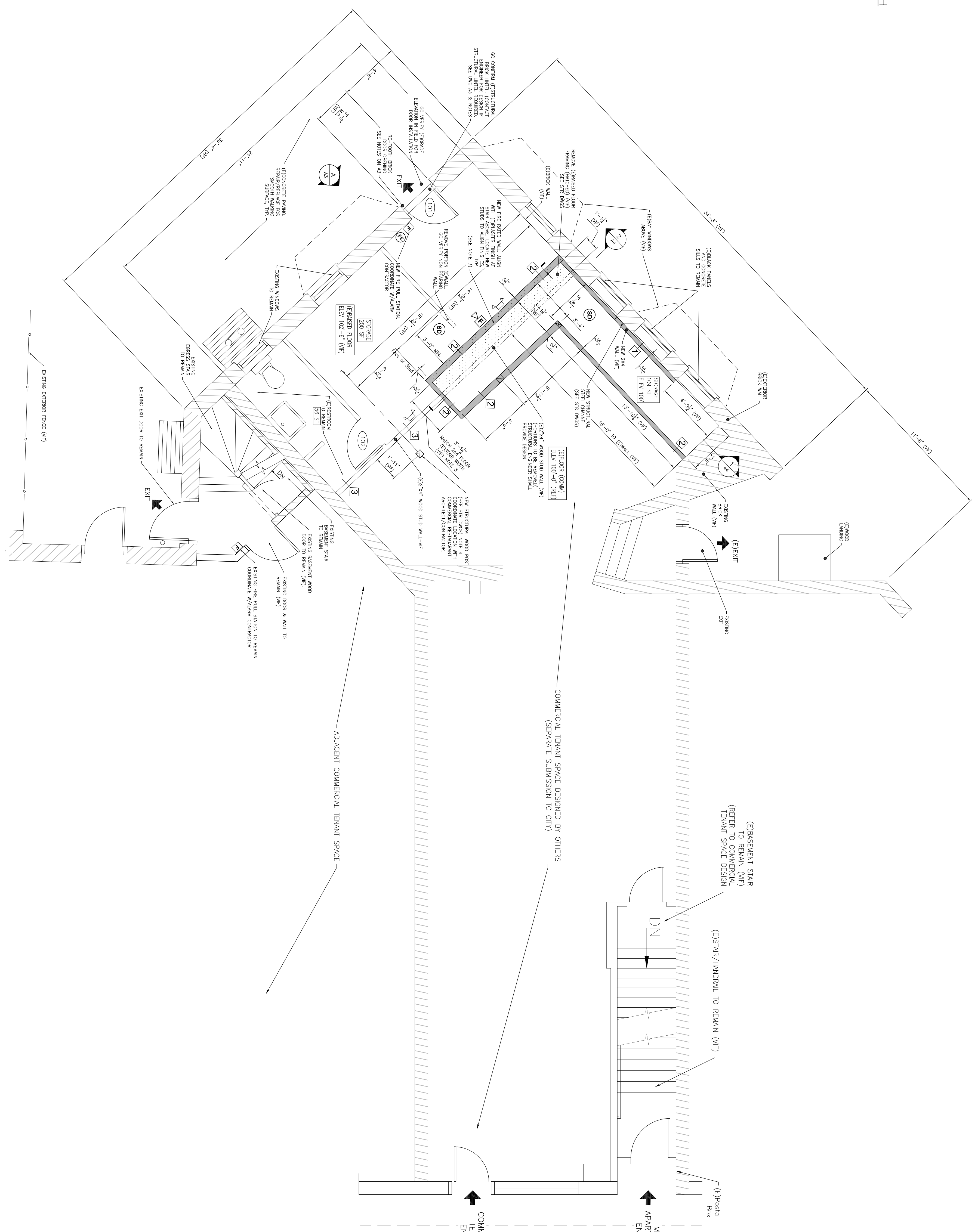


PROJECT NORTH

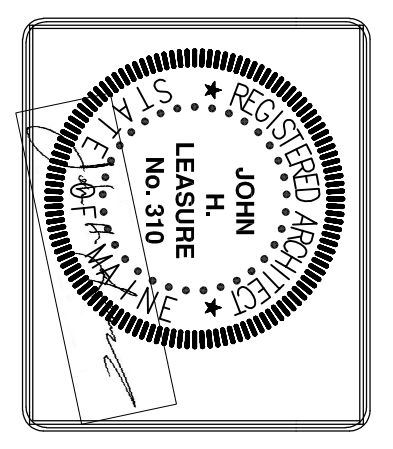


FIRST FLOOR PARTIAL PLAN (B)
1/4" = 1'-0"

LEGEND

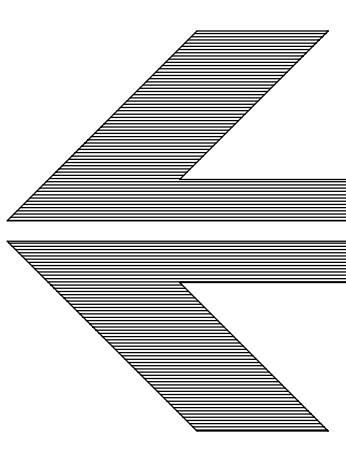
- (FE) FIRE EXTINGUISHER
- (EL) EXTERIOR EMERGENCY LIGHT UNIT (LOCATION LISTED) DUAL-LITE (LED) MODEL DYN 6 WITH WIRE GUARD COLOR BY OWNER
- (E) SELF CONTAINED EMERGENCY LIGHT WITH 2 HEADS DUAL-LITE (LED) L225N-Q3L OR APPD EQUAL 25 WATTS FOR 90 MINUTES COLOR BY OWNER
- (E) EXTERIOR REMOTE HEAD EMERGENCY LIGHT UNIT DUAL-LITE (LED) MODEL OCRD 1203L COLOR BY OWNER
- (E) FIRE ALARM PULL STATION MOUNT AT 48" AFF
- (SD) SYSTEM CONNECTED SMOKE DETECTOR, PHOTOELECTRIC TYPE
- (SA) FIRE ALARM AUDIOVISUAL
- (M) MOUNT 6-2" AFF
- (M) MOUNT 6-2" AFF AREA RATING, MH - MINIMUM CL - CEILING MOUNTED NO DESIGNATION INDICATES 15dd

| REV. | DATE | STATUS |
|------|---------|-------------------|
| 0 | 9-21-17 | PERMIT SUBMISSION |
| | | |
| | | |
| | | |



- NOTES:
1. CONTRACTOR SHALL VERIFY ALL EXISTING CONDITIONS AND REPORT DISCREPANCIES TO ARCHITECT/ENGINEER. SEE DWG A7
 2. WALL AND CEILING TYPES
 3. GC/OWNER VERIFY WITH STRUCTURAL ENGINEER THAT PROPOSED WALLS TO BE REMOVED ARE NOT LOAD BEARING OR REQUIRE ENGINEERING DESIGN TO COMPLY WITH STRUCTURAL CODE REQUIREMENTS AND SAFETY.
 4. REFER TO STRUCTURAL DRAWINGS FOR COLUMNS, BEAMS AND CONCRETE FOOTINGS REQUIRED IN BASEMENT AREA. COORDINATE DIMENSIONS WITH FLOOR PLANS. NOTER ARCHITECT OR ENGINEER OF ANY ADJUSTMENTS BEFORE PROCEEDING WITH THE AFFECTED PART OF THE WORK.
 5. G.C. SHALL CONFIRM EXISTING SUPPORT UNITS (WOOD, STEEL AND MASONRY) IN FIELD. CONTACT STRUCTURAL ENGINEER TO REVIEW EXISTING CONDITIONS & APPROVE OR DESIGN ADEQUATE STRUCTURAL SUPPORT. PROVIDE 3 DAYS PRIOR NOTICE TO ENGINEER FOR FIELD VISIT REVIEW.

JOHN H. LEASURE ARCHITECT, INC.
6 Q STREET
SOUTH PORTLAND, MAINE 04106



PROPOSED STORAGE ROOM
658 CONGRESS STREET
PORTLAND, MAINE
PARTIAL FIRST FLOOR PLAN

