

LEGEND:

- MAIN PIPE RISEN UP OR DOWN
- PROPOSED STEEL PIPE
- - - PROPOSED CPVC PIPE
- ▲ SYSTEM RISER
- ⊕ SWAY BRACING
- ⊕ HYDRAULIC CALC. POINT

DESIGN & SYSTEM NOTES:

1. ALL SPRINKLER SYSTEMS SHALL BE INSTALLED TO MAINTAIN 1.7/2" AND SMALLER TO BE SCHEDULE 40 PIPE UNLESS OTHERWISE NOTED.

2. ALL SPRINKLER SYSTEMS SHALL BE INSTALLED TO MAINTAIN 1.7/2" AND SMALLER TO BE SCHEDULE 40 PIPE UNLESS OTHERWISE NOTED.

3. ALL SPRINKLER SYSTEMS SHALL BE INSTALLED TO MAINTAIN 1.7/2" AND SMALLER TO BE SCHEDULE 40 PIPE UNLESS OTHERWISE NOTED.

4. ALL SPRINKLER SYSTEMS SHALL BE INSTALLED TO MAINTAIN 1.7/2" AND SMALLER TO BE SCHEDULE 40 PIPE UNLESS OTHERWISE NOTED.

5. ALL SPRINKLER SYSTEMS SHALL BE INSTALLED TO MAINTAIN 1.7/2" AND SMALLER TO BE SCHEDULE 40 PIPE UNLESS OTHERWISE NOTED.

6. ALL SPRINKLER SYSTEMS SHALL BE INSTALLED TO MAINTAIN 1.7/2" AND SMALLER TO BE SCHEDULE 40 PIPE UNLESS OTHERWISE NOTED.

7. ALL SPRINKLER SYSTEMS SHALL BE INSTALLED TO MAINTAIN 1.7/2" AND SMALLER TO BE SCHEDULE 40 PIPE UNLESS OTHERWISE NOTED.

8. ALL SPRINKLER SYSTEMS SHALL BE INSTALLED TO MAINTAIN 1.7/2" AND SMALLER TO BE SCHEDULE 40 PIPE UNLESS OTHERWISE NOTED.

9. ALL SPRINKLER SYSTEMS SHALL BE INSTALLED TO MAINTAIN 1.7/2" AND SMALLER TO BE SCHEDULE 40 PIPE UNLESS OTHERWISE NOTED.

10. ALL SPRINKLER SYSTEMS SHALL BE INSTALLED TO MAINTAIN 1.7/2" AND SMALLER TO BE SCHEDULE 40 PIPE UNLESS OTHERWISE NOTED.

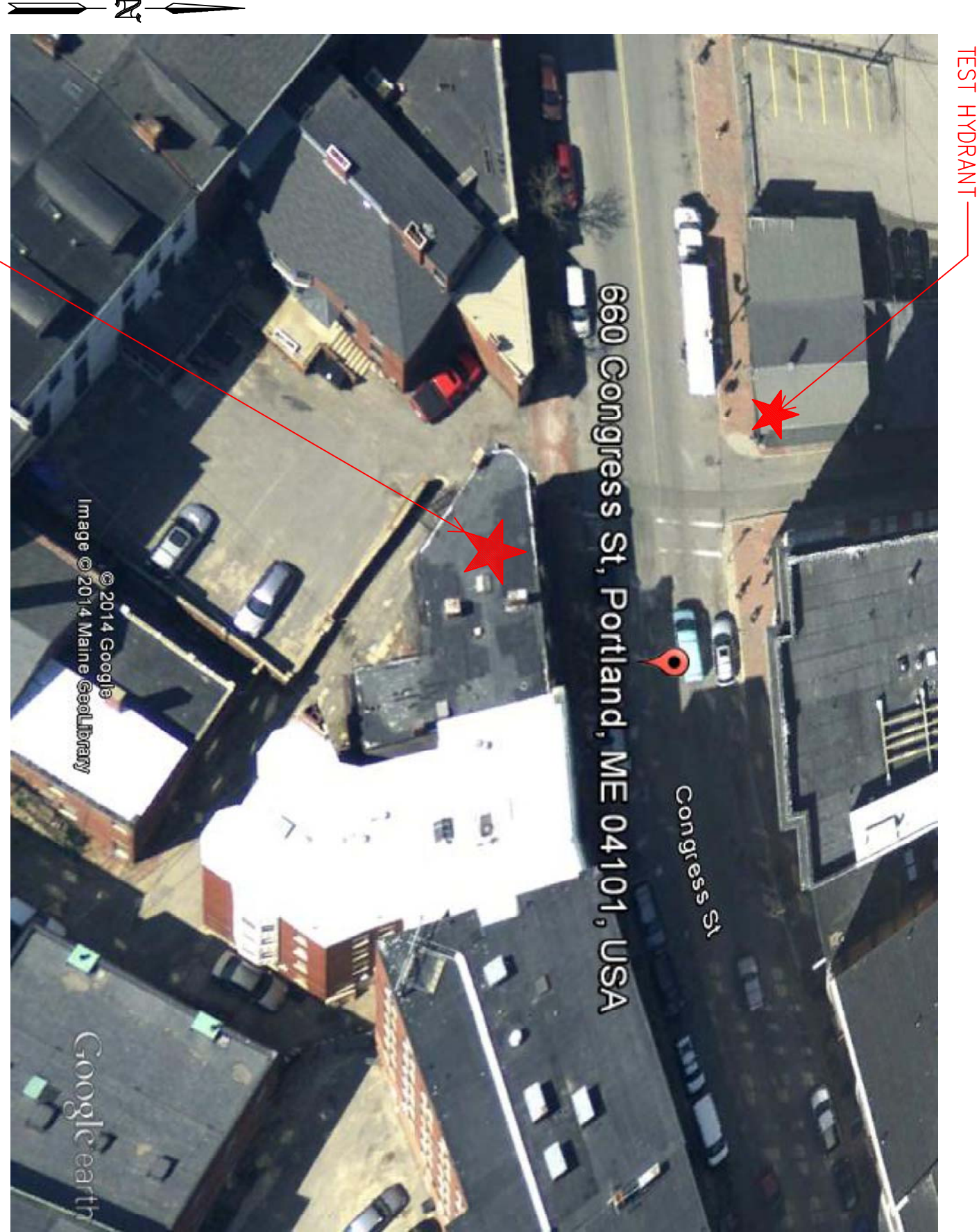
11. ALL SPRINKLER SYSTEMS SHALL BE INSTALLED TO MAINTAIN 1.7/2" AND SMALLER TO BE SCHEDULE 40 PIPE UNLESS OTHERWISE NOTED.

12. ALL SPRINKLER SYSTEMS SHALL BE INSTALLED TO MAINTAIN 1.7/2" AND SMALLER TO BE SCHEDULE 40 PIPE UNLESS OTHERWISE NOTED.

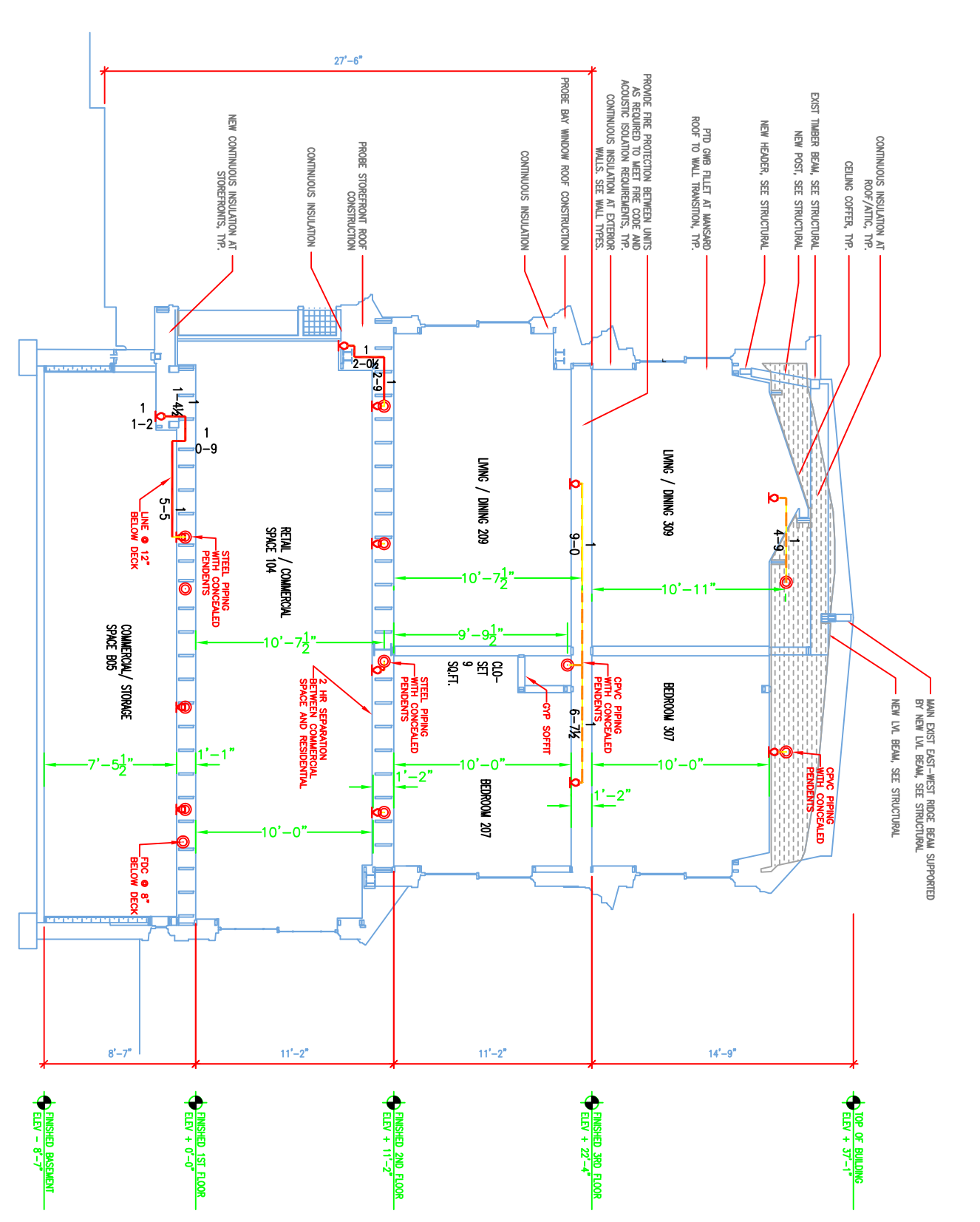
13. ALL SPRINKLER SYSTEMS SHALL BE INSTALLED TO MAINTAIN 1.7/2" AND SMALLER TO BE SCHEDULE 40 PIPE UNLESS OTHERWISE NOTED.

14. ALL SPRINKLER SYSTEMS SHALL BE INSTALLED TO MAINTAIN 1.7/2" AND SMALLER TO BE SCHEDULE 40 PIPE UNLESS OTHERWISE NOTED.

15. ALL SPRINKLER SYSTEMS SHALL BE INSTALLED TO MAINTAIN 1.7/2" AND SMALLER TO BE SCHEDULE 40 PIPE UNLESS OTHERWISE NOTED.



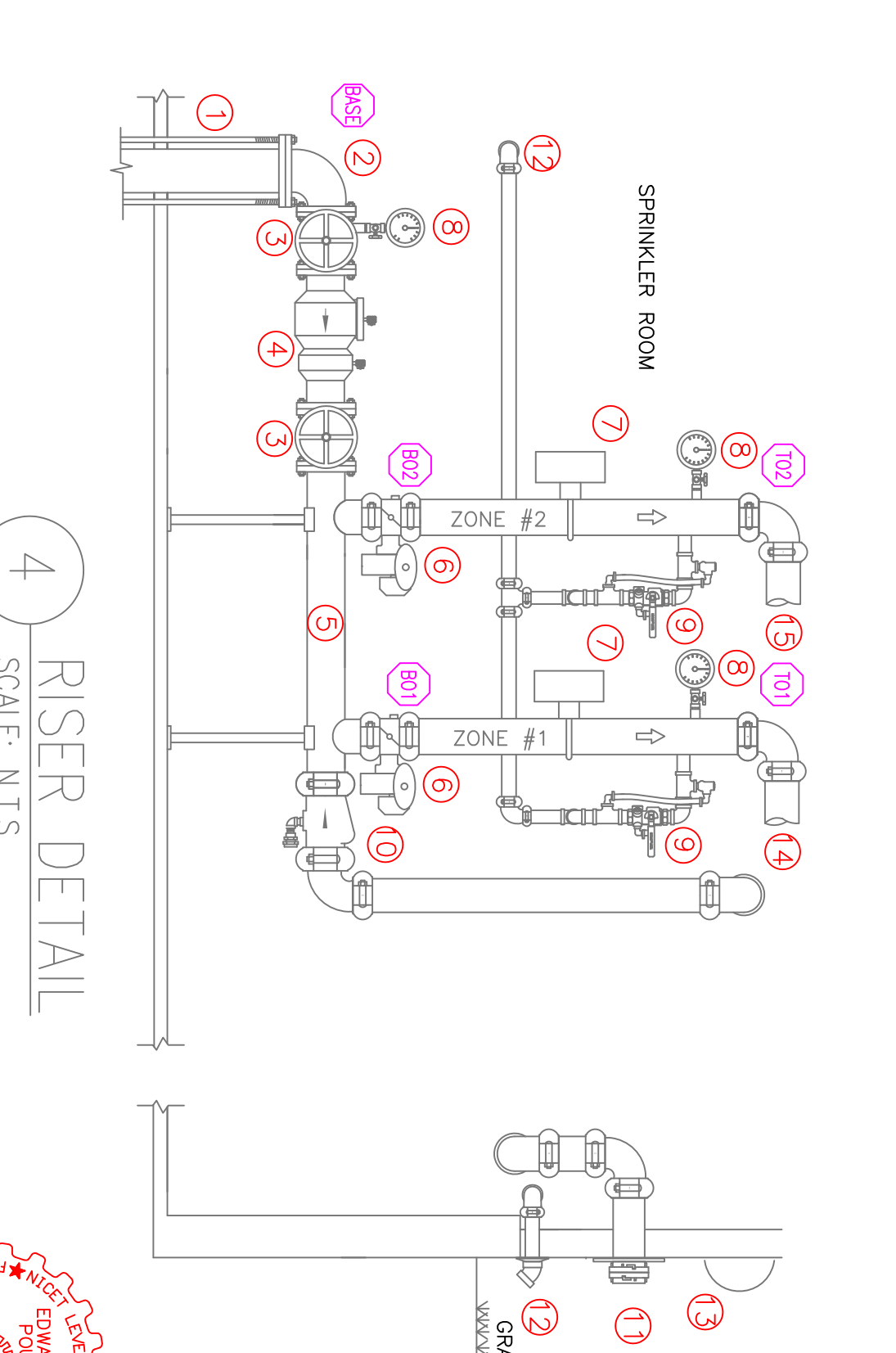
6 SITE PLAN
SCALE: N.T.S.



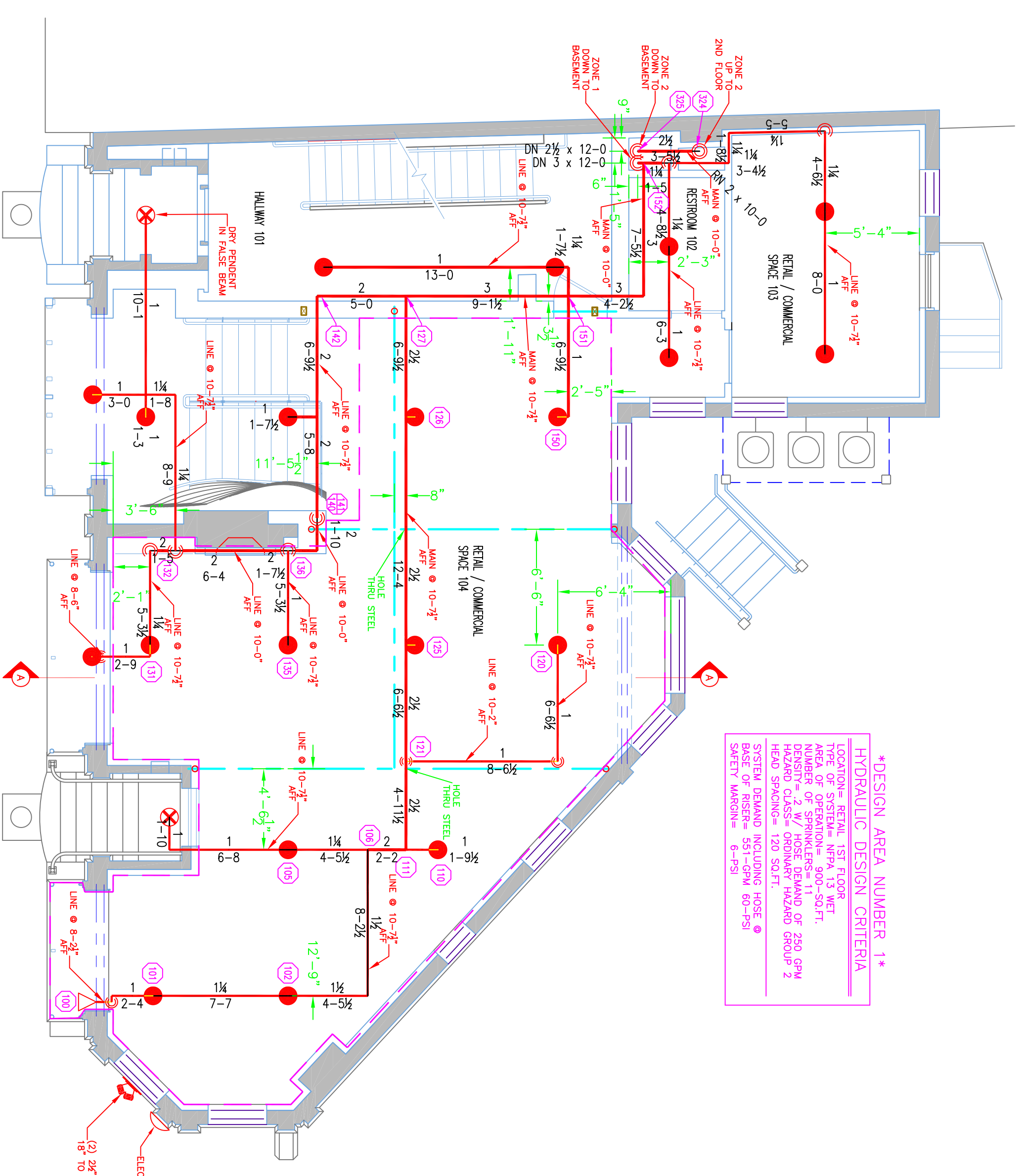
5 SECTION 'A'
SCALE: 1/8" = 1'-0"

SPRINKLER SYSTEM COMPONENT DESCRIPTIONS

1. 6" DIAM. UNDERGROUND (BY OTHER) 1"-4" ABOVE GRADE MINIMUM
2. 4" x 4" FLANGED DRIPLE CONNECTION TO EL.
3. 4" OSMY GATE VALVE WITH PRESSURE GAUGE & ROTTER OSMY-1 TAMPER SWITCH
4. 4" RISER PIPE WITH PRESSURE GAUGE
5. 4" RISER PIPE WITH TAMPER SWITCH
6. BUTTERFLY VALVE WITH TAMPER SWITCH
7. WATER PRESSURE GAUGE
8. INSPECTOR'S TEST N DRINK VALVE WITH RELIEF VALVE
9. SWING CHECK VALVE FOR BACKFLOW PREVENTION
10. SWING CHECK VALVE FOR BACKFLOW PREVENTION
11. 1/2" LEADING BELT FOR SPRINKLER SYSTEM (SEE PLAN FOR LOCATION)
12. 1/2" LEADING BELT FOR SPRINKLER SYSTEM (SEE PLAN FOR LOCATION)
13. 1/2" LEADING BELT FOR SPRINKLER SYSTEM (SEE PLAN FOR LOCATION)
14. 1/2" LEADING BELT FOR SPRINKLER SYSTEM (SEE PLAN FOR LOCATION)
15. 2 1/2" WET TEST TO ZONE 2 (RESIDENTIAL)



4 RISER DETAIL
SCALE: N.T.S.



1 FIRST FLOOR (ZONE 1)
TOTAL PROTECTED AREA 1,740 SQ.FT.
SCALE 3/16" = 1'-0"

PROJECT DESCRIPTION

BUILDING CONST.:
THE BUILDING IS 3 LEVEL ABOVE GRADE + A BASEMENT LEVEL. CONSTRUCTED OF WOOD FRAMING, FIBERGLASS - BLOWN IN INSULATION, AND GYP BOARD CONSTRUCTION. CPVC AND STEEL SPRINKLER PIPING AS SHOWN ON THIS PLAN.

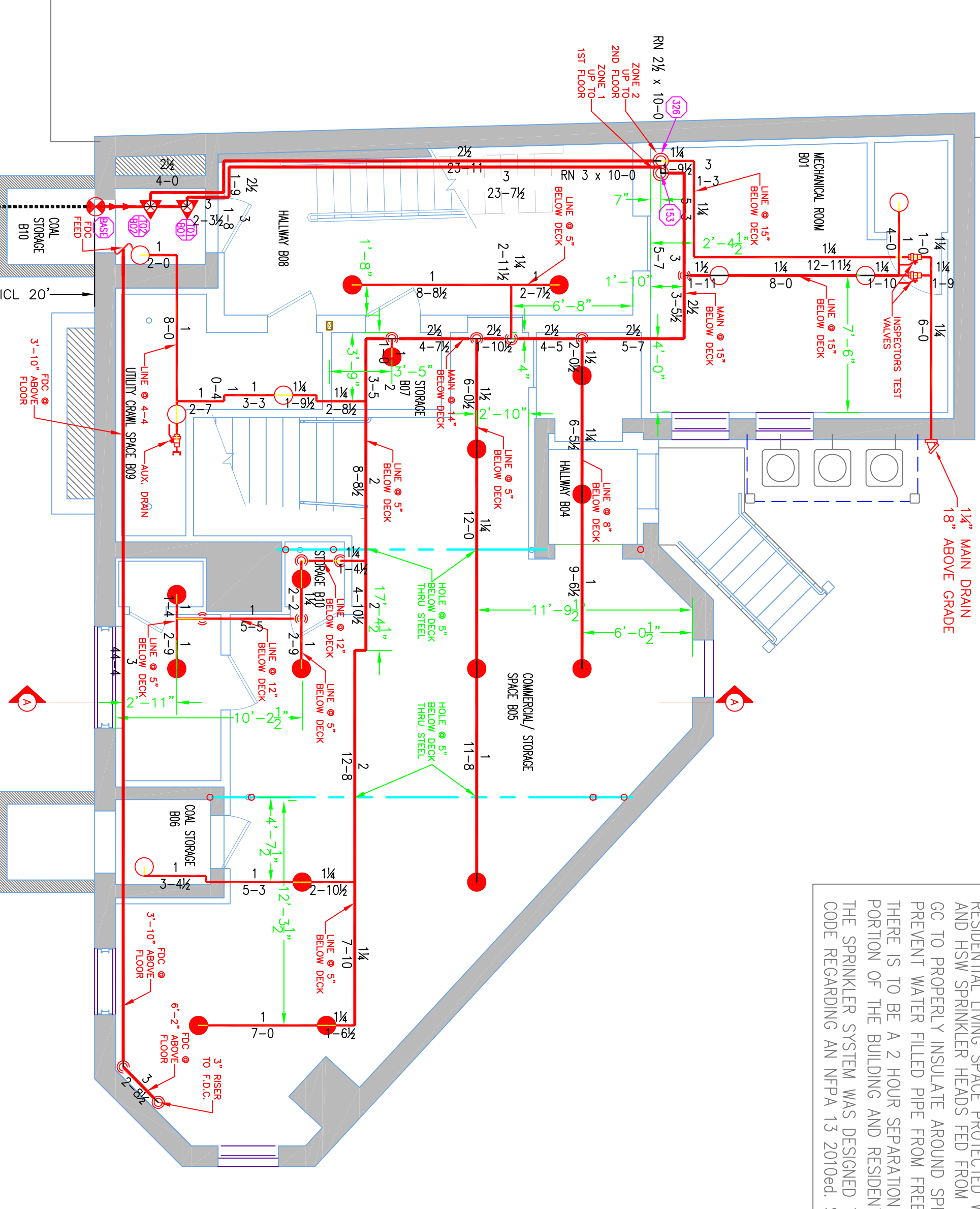
BUILDING OCCUPANCY:
THE BUILDING IS BEING REMODELED AND DESIGNED FOR MERCANTILE TYPE USAGE IN THE BASEMENT AND 1ST FLOOR. RESIDENTIAL LIVING TYPE USAGE ON THE SECOND AND THIRD FLOOR SPRINKLER SYSTEM DESIGN.

THERE ARE 2 WET ZONED SPRINKLER SYSTEMS FOR THE BUILDING. THE FIRST ZONE IS FOR THE BASEMENT AND 1ST FLOOR COMMERCIAL AREAS AND THE SECOND ZONE IS FOR THE SECOND AND THIRD FLOOR RESIDENTIAL AREAS.

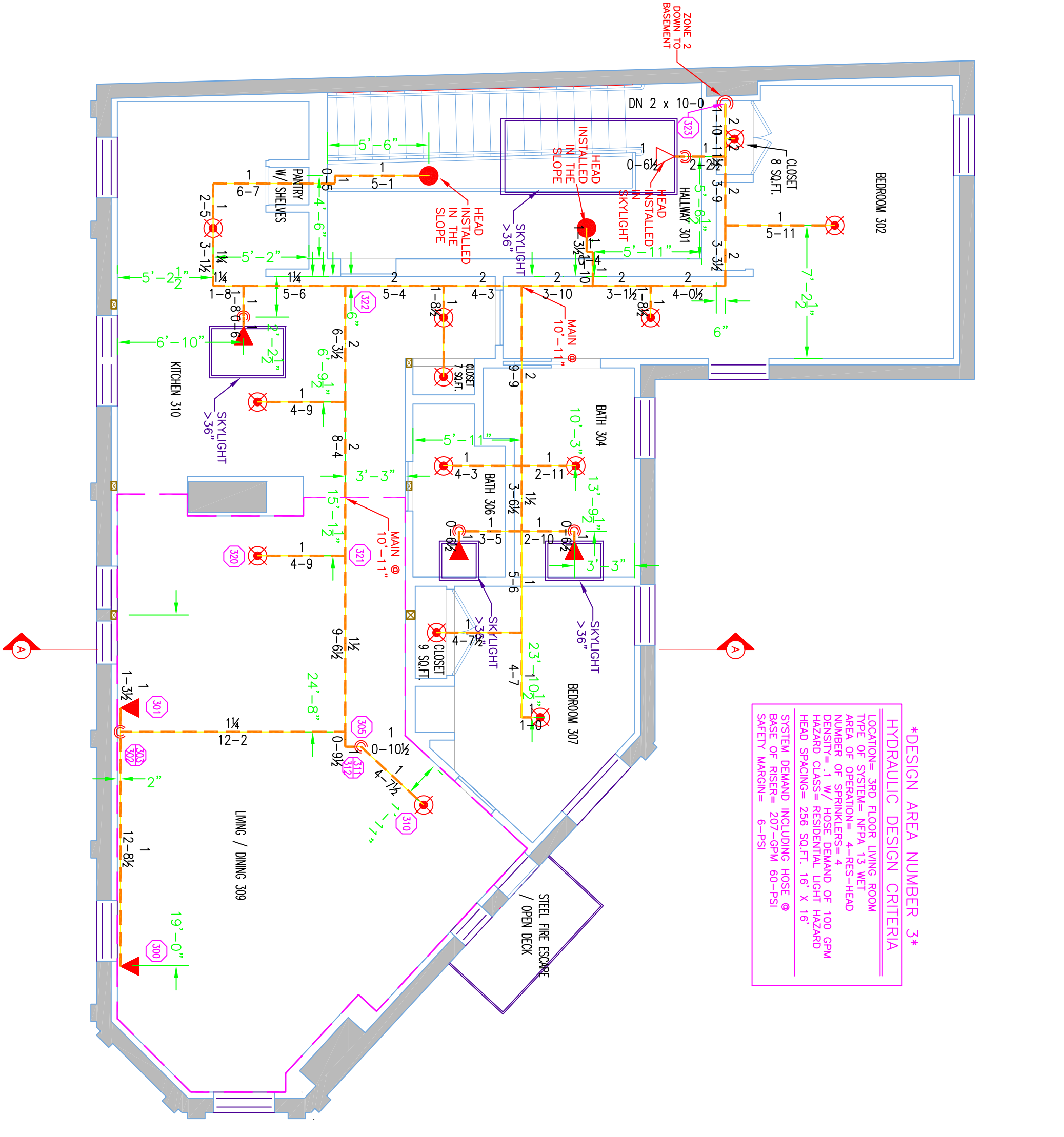
COMMERCIAL AREAS PROTECTED WITH COMMERCIAL STYLE HEADS. RESIDENTIAL LIVING SPACE PROTECTED WITH RESIDENTIAL PENDENTS AND HSW SPRINKLER HEADS FED FROM CPVC PIPING ABOVE. PREVENT WATER FILLED PIPE FROM FREEZING.

THERE IS TO BE A 2 HOUR SEPARATION BETWEEN THE COMMERCIAL PORTION OF THE BUILDING AND RESIDENTIAL PER NFPA 101. THE SPRINKLER SYSTEM WAS DESIGNED TO MEET APPLICABLE CODE REQUIRING AN NFPA 13 2010ed SYSTEM.

DESIGN AREA NUMBER 1
HYDRAULIC DESIGN CRITERIA
TYPE OF SYSTEM: WET
RATED FLOW: 150 GPM
RATED PRESSURE: 100 PSI
RATED HEIGHT: 120 FT
RATED TEMPERATURE: 150°F
RATED SPRINKLER: 120 SQ.FT. HEAD @ 1.5 GPM
RATED WATER SUPPLY: 100 GPM @ 100 PSI
RATED WIND SPEED: 15 MPH
RATED SEISMIC: 0.2

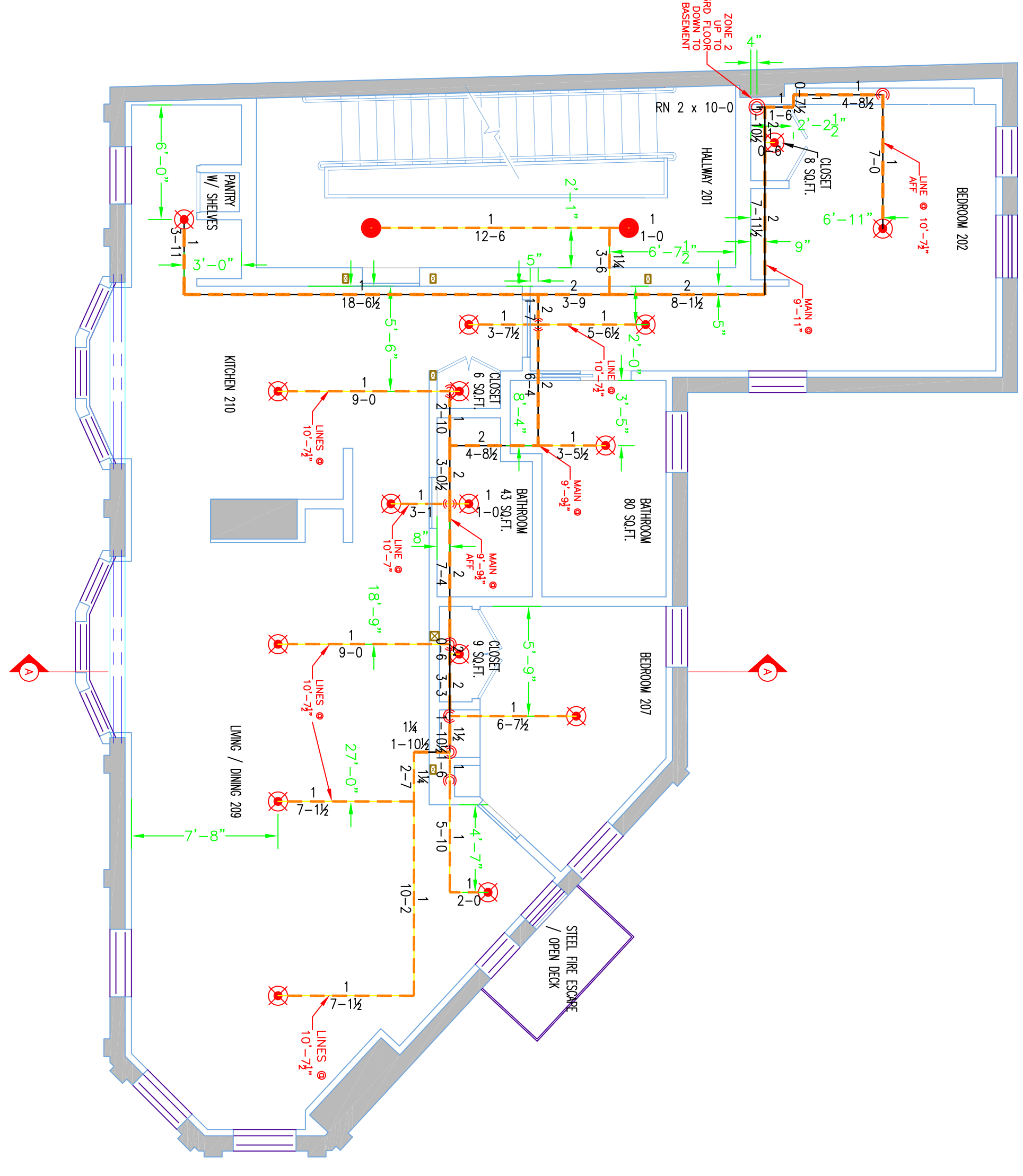


2 BASEMENT LEVEL (ZONE 1)
TOTAL PROTECTED AREA 1,650 SQ.FT.
SCALE 3/16" = 1'-0"

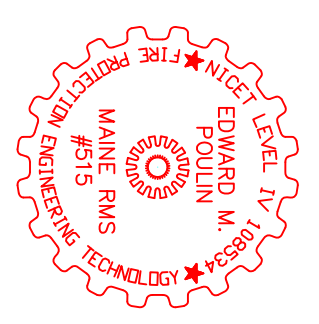


3 THIRD FLOOR (ZONE 2)
TOTAL PROTECTED AREA 1,600 SQ.FT.
SCALE 3/16" = 1'-0"

DESIGN AREA NUMBER 3
HYDRAULIC DESIGN CRITERIA
TYPE OF SYSTEM: WET
RATED FLOW: 150 GPM
RATED PRESSURE: 100 PSI
RATED HEIGHT: 120 FT
RATED TEMPERATURE: 150°F
RATED SPRINKLER: 120 SQ.FT. HEAD @ 1.5 GPM
RATED WATER SUPPLY: 100 GPM @ 100 PSI
RATED WIND SPEED: 15 MPH
RATED SEISMIC: 0.2



2 SECOND FLOOR (ZONE 2)
TOTAL PROTECTED AREA 1,640 SQ.FT.
SCALE 3/16" = 1'-0"



DRAWING TITLE:
660-662 CONGRESS ST.
PORTLAND, ME

DATE: AUGUST 12, 2014
DESIGNER: ED POLLEN (RMS 515)
CHECKED BY: AL FOSS

NO. DATE: DESCRIPTION:
1 12/23/14 REVISED CLOSETS

SCALE: 1/8" = 1'-0"
TOTAL HEADS ON THIS SHEET: 81

1/2" RESIDENTIAL WHITE HORIZONTAL DEFLECTORS 1" TO 12" BELOW NON-COMBUSTIBLE CEILING
MODEL: W4640
K-5.6

1/2" BRASS UPRIGHT DEFLECTORS 1" TO 12" BELOW NON-COMBUSTIBLE CEILING
MODEL: G5606
K-5.6

1/2" WHITE CONCEALED PENDENT GLOBE
MODEL: G5604
K-5.6

1/2" DRY PENDENT WHITE CONCEALED ESC. 12" MINIMUM
MODEL: G5626
K-5.6

1/2" WHITE HORIZONTAL SIDEWALL SEMI REC. ESC. NON-COMBUSTIBLE CEILING OR APPROVED EQUAL.
MODEL: G5626
K-5.6

DRAWING NO.: FP-01