

**660-662
CONGRESS
STREET**

PORTLAND, MAINE

ARCHITECT:
PRESENT ARCHITECTURE PLLC
66 WEST BROADWAY, SUITE 306
NEW YORK, NY, 10007
T: (207) 449-8513

CONTRACTOR:
BAYHILL BUILDING & DESIGN
P.O. BOX 178
SOUTH FREEPORT, ME 04078
T: (207) 865-9351

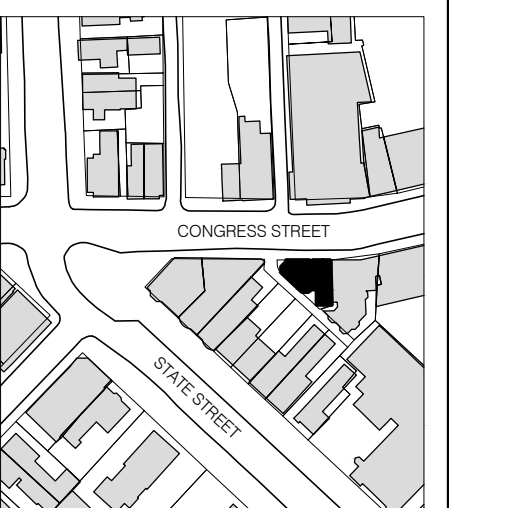
STRUCTURAL ENGINEER:
**ENGINEERING DESIGN
PROFESSIONALS**

P.O. BOX 575
FREEPORT, ME 04032
T: (207) 865-9505

OWNER:
A.K. LONGFELLOW LLC

660 CONGRESS STREET
PORTLAND, ME 04101

6	11/10/2014	PHASE 2 - REVISION 02
5	10/31/2014	PHASE 2 PERMIT ADDITION
4	7/18/2014	PHASE 2 PERMIT ISSUE
3	1/15/2014	FIRE MARSHAL ISSUE
2	5/15/2013	PHASE 1 PERMIT ISSUE
1	3/28/2013	HPCA SET
NO.	DATE	ISSUE



B-SCAN:

DWG. CONTENTS:
**OCCUPANT LOAD
CALCULATIONS**

DATE: November 10, 2014
SCALE: 1/8" = 1'-0"
DWG. BY:
PROJECT NO.: 008

DWG. NO.: **A-007**

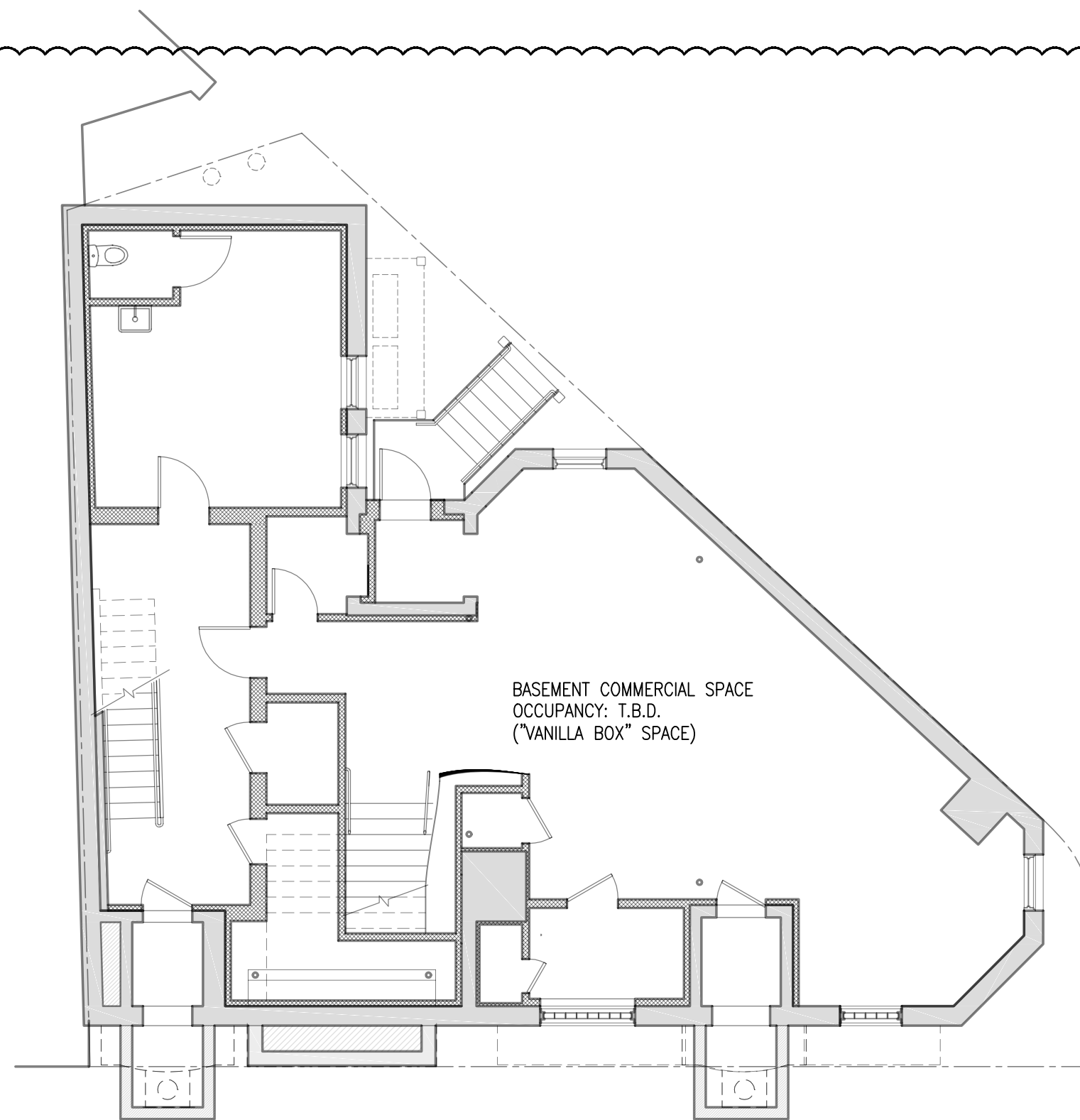
SHEET NO.:

MUBEC (IBC) OCCUPANT LOAD CALCULATIONS

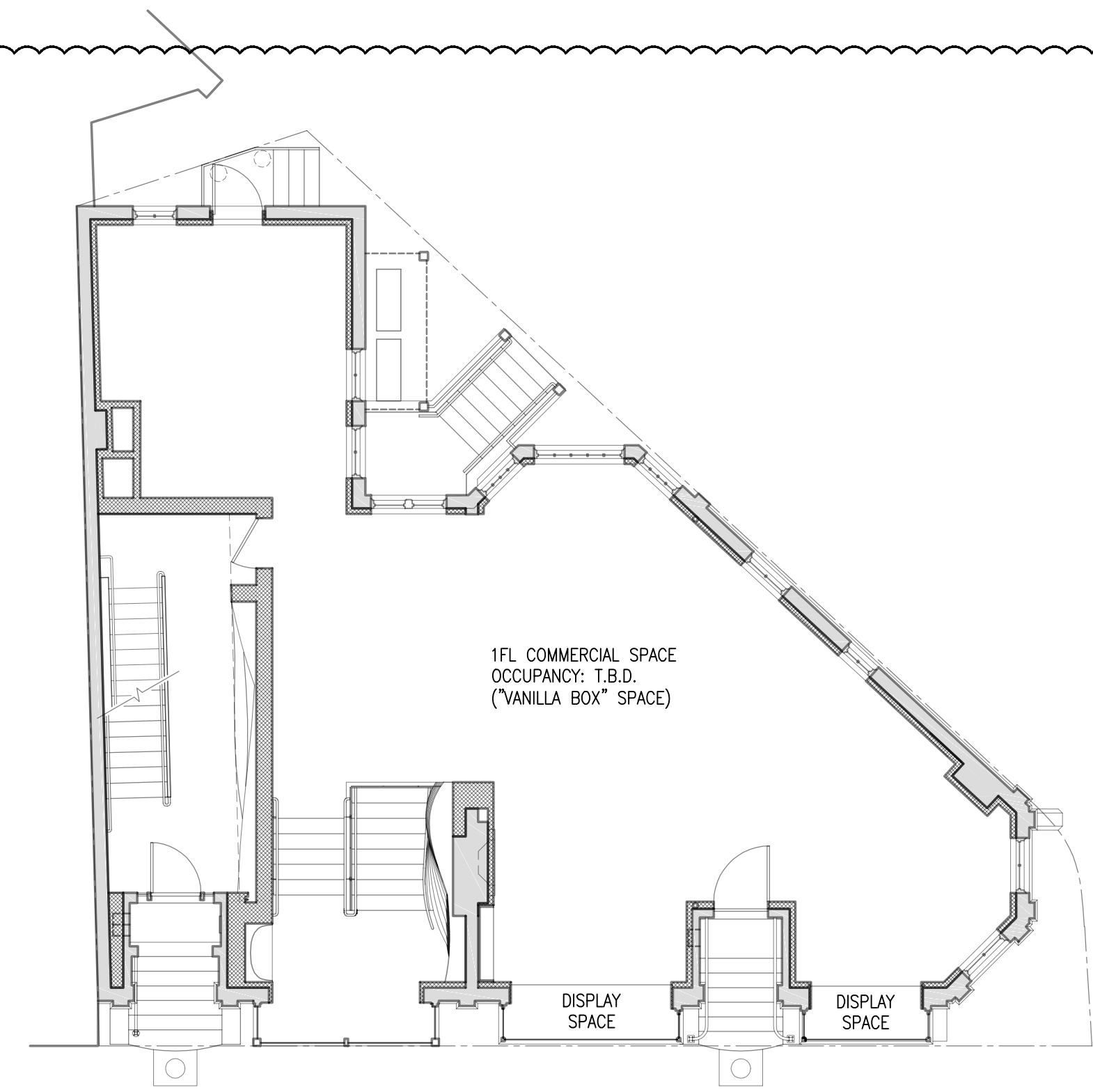
ROOM NO.	NAME	OCCUPANCY	FUNCTION OF SPACE	AREA	SQFT PER OCCUPANT	OCCUPANT LOAD
B05	BASEMENT COMMERCIAL SPACE	T.B.D.	T.B.D.	T.B.D.	T.B.D.	T.B.D.
103	1ST FLOOR COMMERCIAL SPACE	T.B.D.	T.B.D.	T.B.D.	T.B.D.	T.B.D.
104	1ST FLOOR COMMERCIAL SPACE	T.B.D.	T.B.D.	T.B.D.	T.B.D.	T.B.D.
N/A	2ND FLOOR RESIDENTIAL UNIT	R-3	RESIDENTIAL	1365 SQFT (GROSS)	200 (GROSS)	7
N/A	3RD FLOOR RESIDENTIAL UNIT	R-3	RESIDENTIAL	1372 SQFT (GROSS)	200 (GROSS)	7

NFPA 101 OCCUPANT LOAD CALCULATIONS

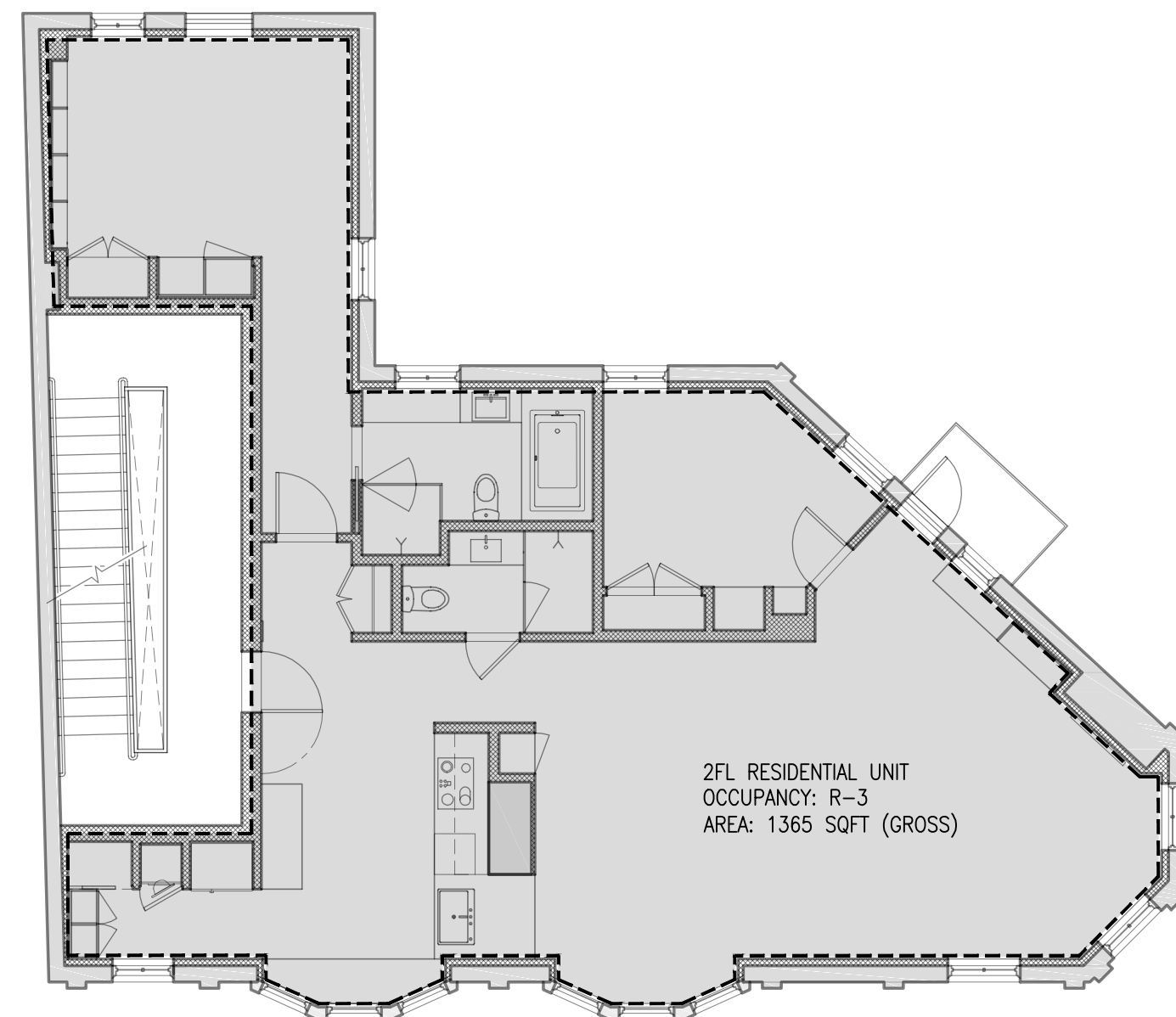
ROOM NO.	NAME	OCCUPANCY	FUNCTION OF SPACE	AREA	SQFT PER OCCUPANT	OCCUPANT LOAD
B05	BASEMENT COMMERCIAL SPACE	T.B.D.	T.B.D.	T.B.D.	T.B.D.	T.B.D.
103	1ST FLOOR COMMERCIAL SPACE	T.B.D.	T.B.D.	T.B.D.	T.B.D.	T.B.D.
104	1ST FLOOR COMMERCIAL SPACE	T.B.D.	T.B.D.	T.B.D.	T.B.D.	T.B.D.
N/A	2ND FLOOR RESIDENTIAL UNIT	RESIDENTIAL USE	APARTMENT BUILDINGS	1365 SQFT (GROSS)	200	7
N/A	3RD FLOOR RESIDENTIAL UNIT	RESIDENTIAL USE	APARTMENT BUILDINGS	1372 SQFT (GROSS)	200	7



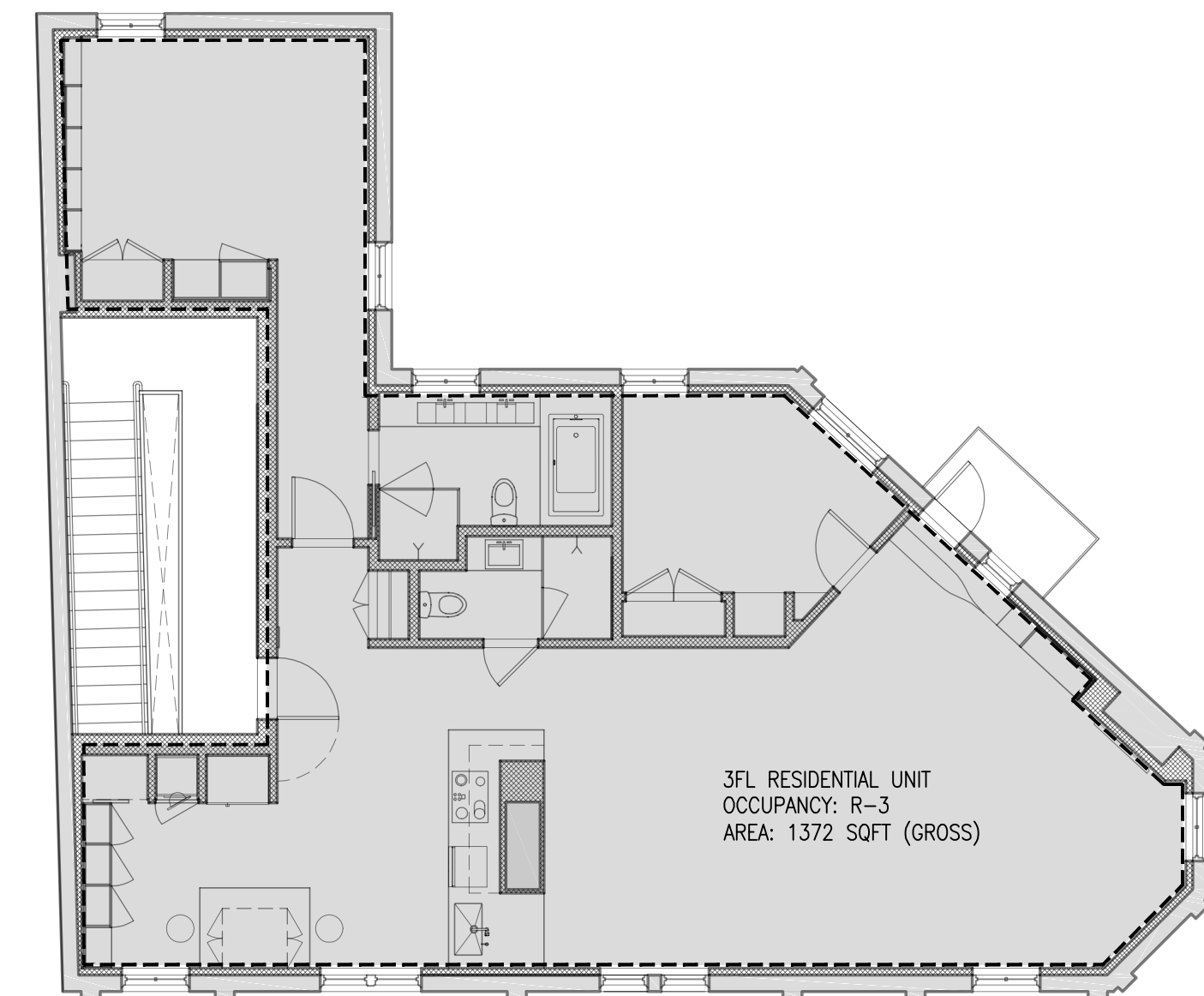
1 BASEMENT OCCUPIED AREA
A-007 1/8" = 1'-0"



2 1ST FLOOR OCCUPIED AREA
A-007 1/8" = 1'-0"



3 2ND FLOOR OCCUPIED AREA
A-007 1/8" = 1'-0"



4 3RD FLOOR OCCUPIED AREA
A-007 1/8" = 1'-0"

2