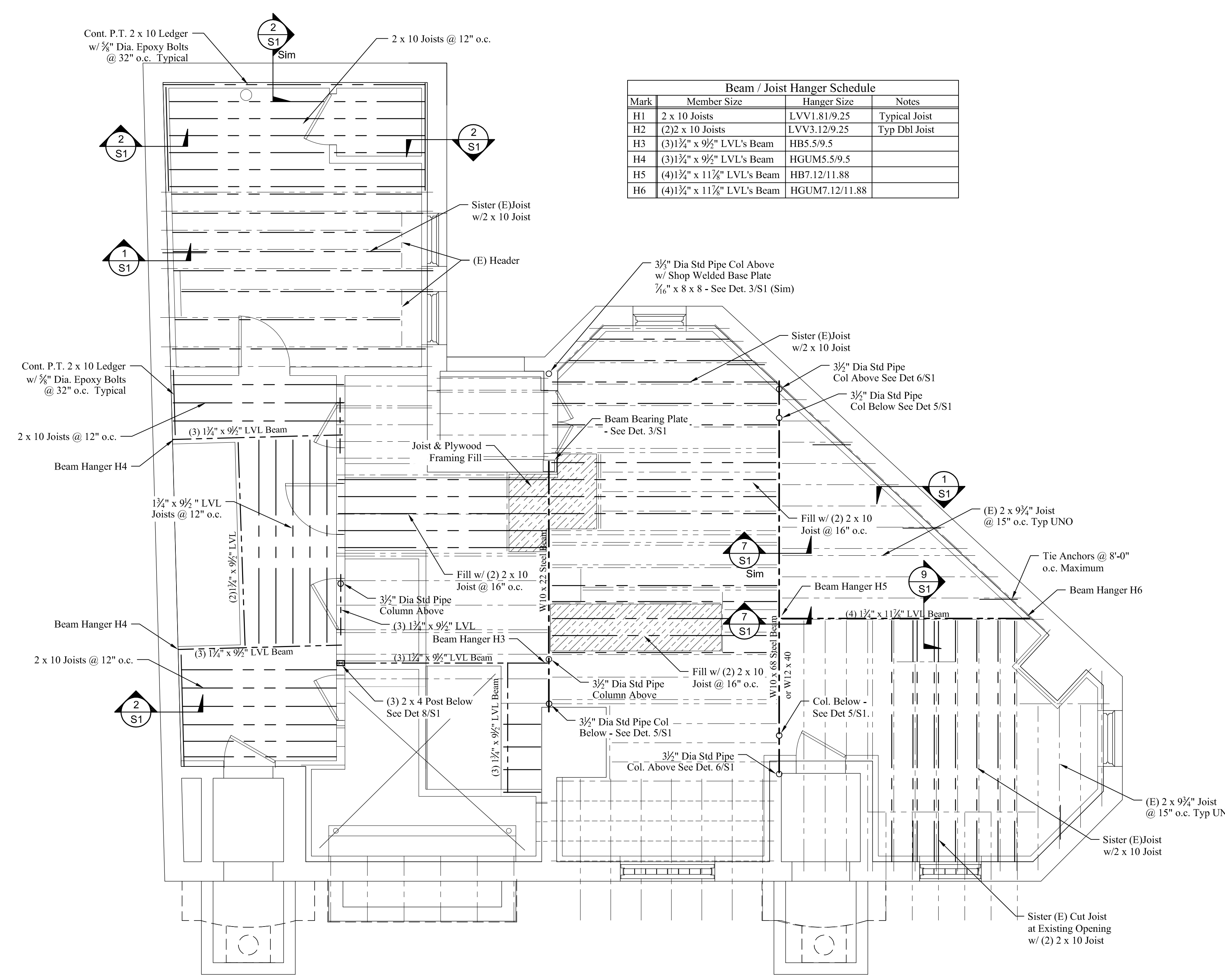




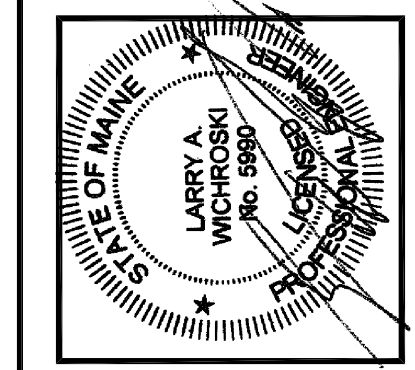
BUILDING REMODEL & REPAIRS
660 Congress Street * Portland * Maine
FIRST FLOOR FRAMING PLAN



Beam / Joist Hanger Schedule			
Mark	Member Size	Hanger Size	Notes
H1	2 x 10 Joists	LVV1.81/9.25	Typical Joist
H2	(2) 2 x 10 Joists	LVV3.12/9.25	Typ Dbl Joist
H3	(3) 1 1/2" x 9 1/2" LVL's Beam	HB5.5/9.5	
H4	(3) 1 1/2" x 9 1/2" LVL's Beam	HGUM5.5/9.5	
H5	(4) 1 1/2" x 11 1/4" LVL's Beam	HB7.12/11.88	
H6	(4) 1 1/2" x 11 1/4" LVL's Beam	HGUM7.12/11.88	

- FLOOR FRAMING NOTES:**
- See Structural Notes sheet S-1 for information.
 - Refer to architectural drawings for dimensions, wall locations, door and window locations and stair opening sizes.
 - Field verify all existing shown information prior to starting work.
 - Spike all sistered joists together with 2 rows of 16d nails @ 16" o.c.

FIRST FLOOR FRAMING PLAN
SCALE: 1/4" = 1'-0"



DESIGNED BY:
Larry Wichroski, P.E.

DRAWN BY:
LAW

JOB NO.:
02412

DATE:
04-20-2013

REVISIONS:

SHEET: