

GENERAL CONTRACTOR ON RECORD:

SPECIAL APPLICATIONS:

- LEGEND:
- Riser Up or Down
 - Auxiliary Drain
 - Proposed Steel Pipe
 - Proposed CPVC Pipe
 - ⊕ System Riser
 - ⊕ Sway Bracing
 - ⊙ Hydraulic Calc. Point

DESIGN & SYSTEM NOTES:

ALL PIPING 1/2" ABOVE RISER TO BE SCHEDULE 10 WITH GROOVED DUCTILE IRON FITTING OR CPVC. ALL PIPING 1/4" & SMALLER TO BE SCHEDULE 40 WITH APPROPRIATE FITTING OR CPVC. POSITION, LOCATION, SPACING, AND USE OF SPRINKLERS SHALL BE IN ACCORDANCE WITH NFPA 13. HYDRAULIC CALCULATION PROCEDURES HAVE BEEN DONE IN ACCORDANCE WITH NFPA 13. (SEE PLANS FOR LOCATION OF REMOTE AREAS, HYDRAULIC REFERENCE POINTS, AND SYSTEM DEMANDS.) HIGH TECH FIRE PROTECTION IS TO BEGIN WORK AT 6" UNDERGROUND 1' AFF INSIDE OF BUILDING. DIMENSIONS AND LOCATIONS GIVEN FOR SPRINKLER HEADS AND PIPE MAY VARY TO ACCOMMODATE ACTUAL FIELD CONDITIONS. OWNER TO PROVIDE ADEQUATE HEAT THROUGHOUT BUILDING TO PROTECT WATER FILLED PIPING AND EQUIPMENT FROM FREEZING TEMPERATURES. ONLY TR-SEAL TYPE COUPLERS TO BE INSTALLED ON DRY OR PRE-ACTION SYSTEMS. OWNER IS RESPONSIBLE TO MAINTAIN THE SPRINKLER SYSTEM IN ACCORDANCE WITH THE LATEST EDITION OF NFPA 25. INSPECTION, TESTING, & MAINTENANCE OF WATER-BASED FIRE PROTECTION SYSTEMS AND/OR ALL APPLICABLE FEDERAL, STATE, AND/OR LOCAL LAWS, CODES AND ORDINANCES. ALL MECHANICAL, ELECTRICAL AND PLUMBING TRADES TO COORDINATE THEIR WORK WITH SPRINKLER CONTRACTOR. ALL ELECTRIC WORK IS TO BE DONE BY OTHERS.

HEAD LEGEND:

- VIKING* MODEL VK474
22 / 155" K=5.8
- 1/2" RESIDENTIAL PENDENT WHITE CONCEALED ESC. 16" X 16" SPACING
- VIKING* MODEL VK460
5 / 155" K=5.8
- 1/2" RESIDENTIAL WHITE HORIZONTAL SIDEWALL SEMI REC. ESC. DEFLECTORS 4" TO 6" BELOW CEILING 16" X 16" SPACING
- GLOBE* MODEL GL5615
7 / 200" K=5.6
- 1/2" BRASS UPRIGHT ON SPRIGS
- DEFLECTORS 1" TO 12" BELOW NON-COMBUSTIBLE CEILINGS
- GLOBE* MODEL GL5606
38 / 155" K=5.6
- 1/2" WHITE CONCEALED PENDENT MODEL GL5634
2 / 155" K=5.6
- 1/2" DRY PENDENT WHITE CONCEALED ESC. 12" MINIMUM
- GLOBE* MODEL GL5626
1 / 155" K=5.6
- 1/2" WHITE HORIZONTAL SIDEWALL SEMI REC. ESC. DEFLECTORS 4" TO 6" BELOW NON-COMBUSTIBLE CEILINGS *OR APPROVED EQUAL*

TOTAL HEADS ON THIS SHEET: 75

SCALE: 1" = 16'-0"

REVISIONS:
 NO. DATE: DESCRIPTION:

DATE: AUGUST 12, 2014
 DESIGNER: ED POULIN (RMS# 515)
 NICET LEVEL: IV CERT # 108534
 CHECKED BY: J. FOSS

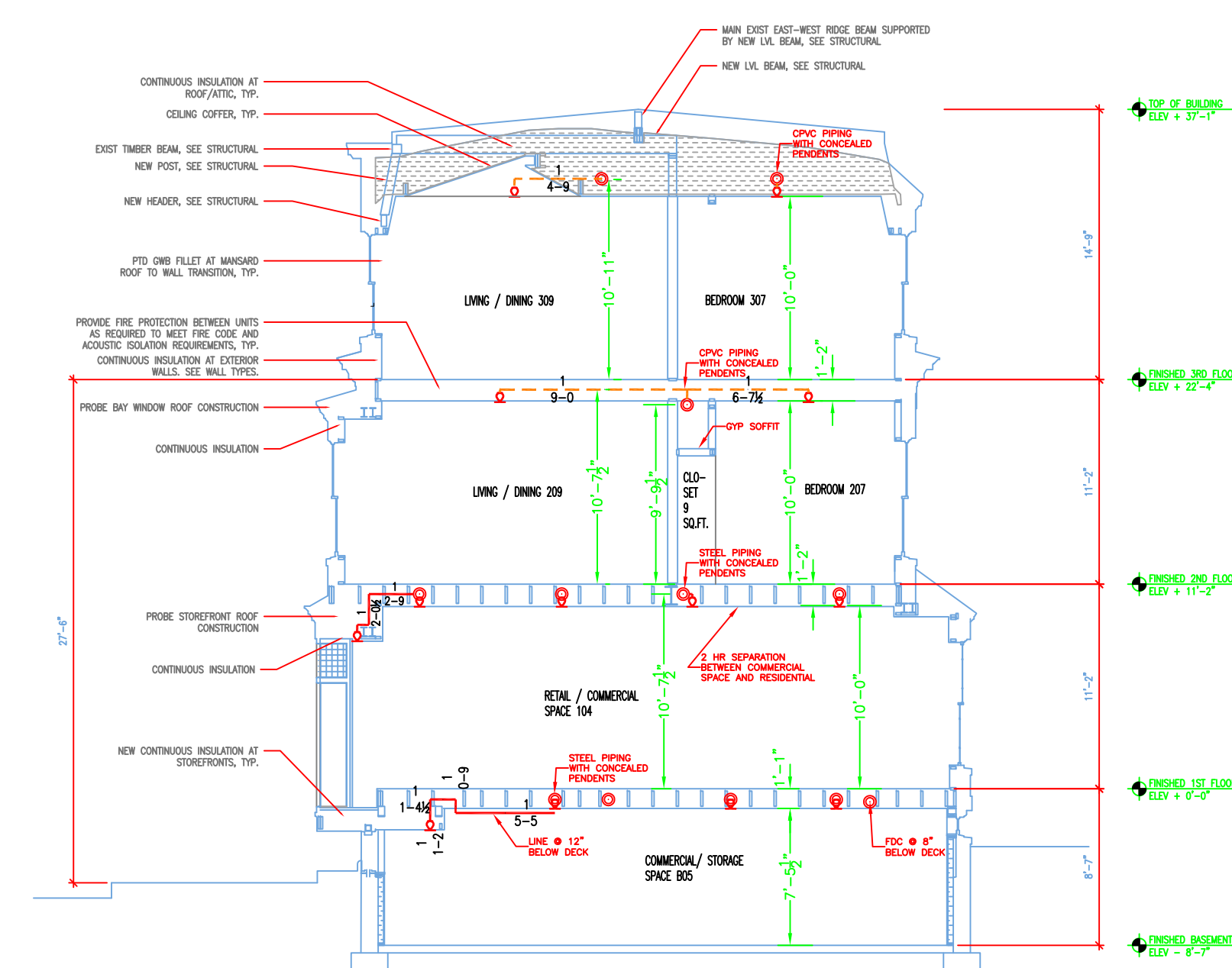
LOCATION:
 660-662 CONGRESS ST
 PORTLAND, ME

DRAWING TITLE:
 660-662 CONGRESS ST.
 COMMERCIAL ZONE 1
 RESIDENTIAL ZONE 2
 FIRE PROTECTION PLAN
 (NFPA 13 2010ed.)

DRAWING NO.:
 FP-01



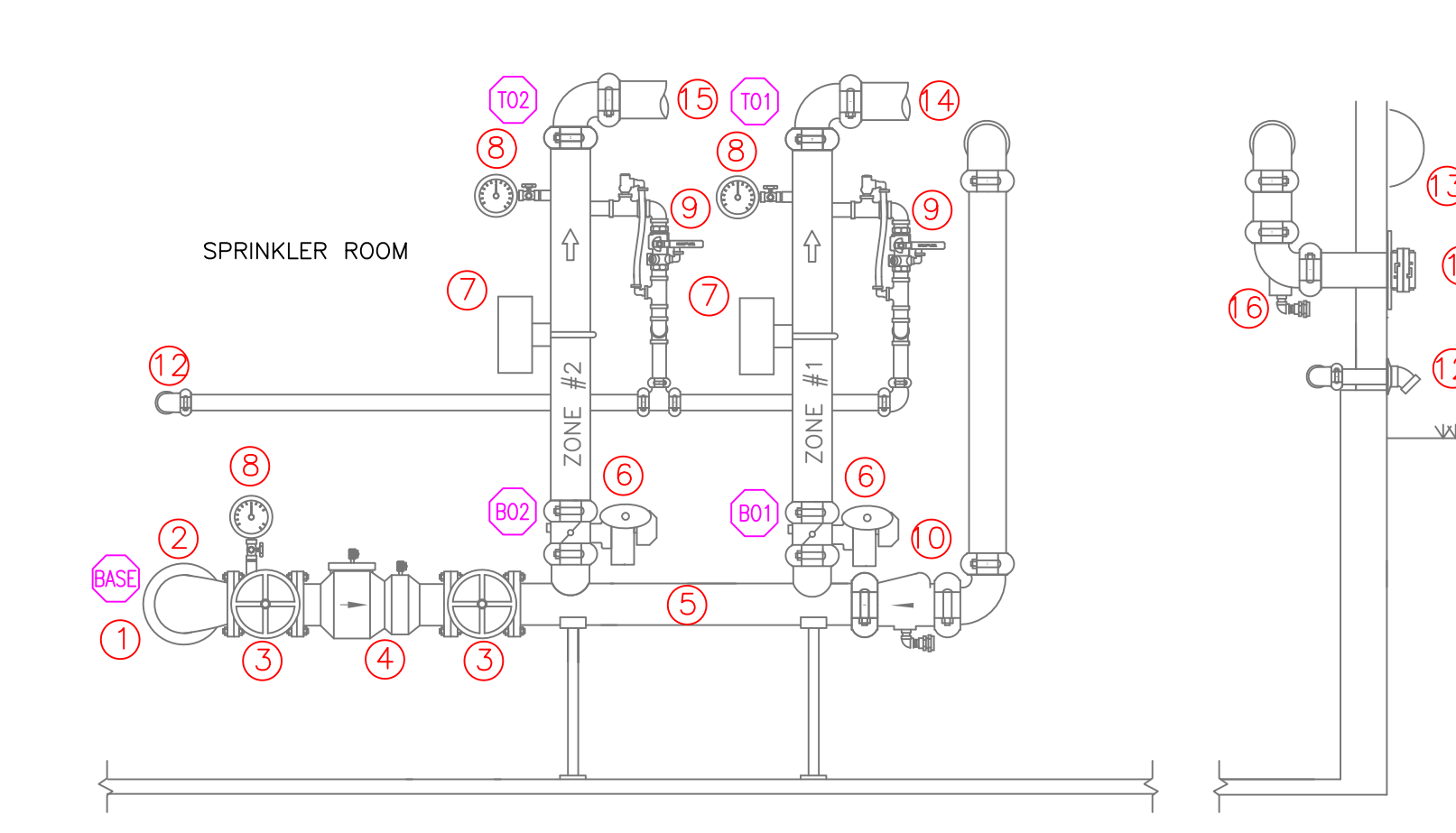
6 SITE PLAN
 SCALE: N.T.S.



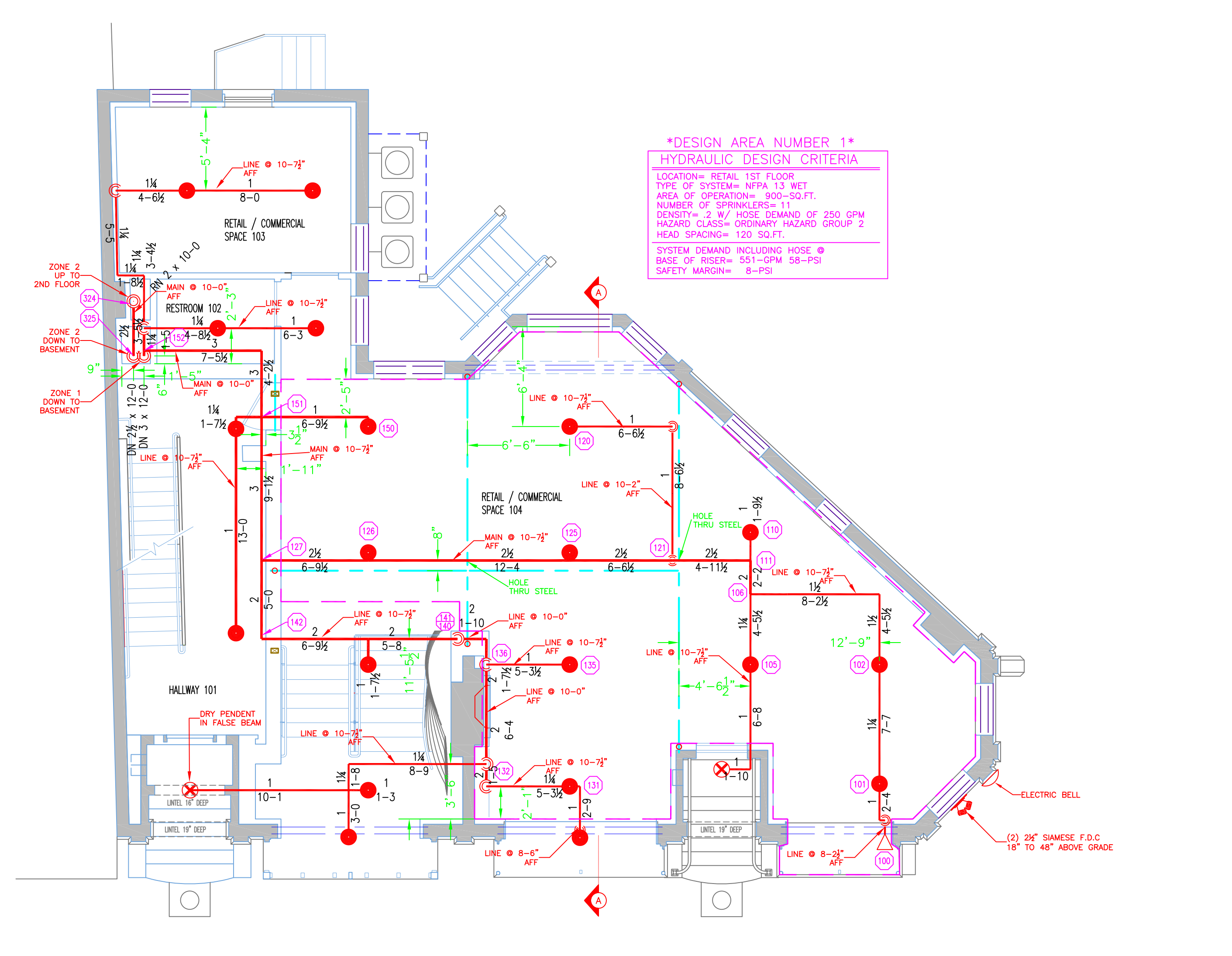
5 SECTION 'A'
 SCALE 1/8" = 1'-0"

SPRINKLER SYSTEM COMPONENT DESCRIPTIONS

1. 6" DIOL UNDERGROUND (BY OTHERS) 1'-6" ABOVE GRADE MINIMUM
2. 6" X 4" FLANGED DUCTILE IRON 90 ELL
3. 4" OS&Y GATE VALVE WITH PRESSURE GAUGE & POTTER OS&Y-1 TAMPER SWITCH
4. 4" WILKINS 350 BACKFLOW PREVENTER
5. 4" HEADER TO FEED ZONE 1 & 2 WET SYSTEMS
6. BUTTERFLY VALVE WITH TAMPER SWITCH
7. POTTER VSR VANE FLOW SWITCH
8. WATER PRESSURE GAUGE
9. INSPECTORS TEST N DRAIN VALVE WITH RELIEF VALVE
10. 5" SWING CHECK VALVE FOR F.D.C. FEED 48" MINIMUM FROM EXTERIOR W BALL DRIP
11. (2) 2 1/2" SAMOSE F.D.C. FOR SPRINKLER SYSTEM (SEE PLAN FOR LOCATION)
12. 1 1/2" MAIN DRAIN PIPED TO EXTERIOR 18" ABOVE GRADE (SEE PLAN FOR LOCATION)
13. 6" ELECTRIC BELL FOR SPRINKLER SYSTEM ON EXTERIOR OF BUILDING
14. 3" WET FEED TO ZONE 1 (COMMERCIAL)
15. 2 1/2" WET FEED TO ZONE 2 (RESIDENTIAL)
16. ADDITIONAL BALL DRIP TO F.D.C.



4 RISER DETAIL
 SCALE: N.T.S.



1 FIRST FLOOR (ZONE 1)
 TOTAL PROTECTED AREA 1,740 SQ.FT.
 SCALE 3/16" = 1'-0"



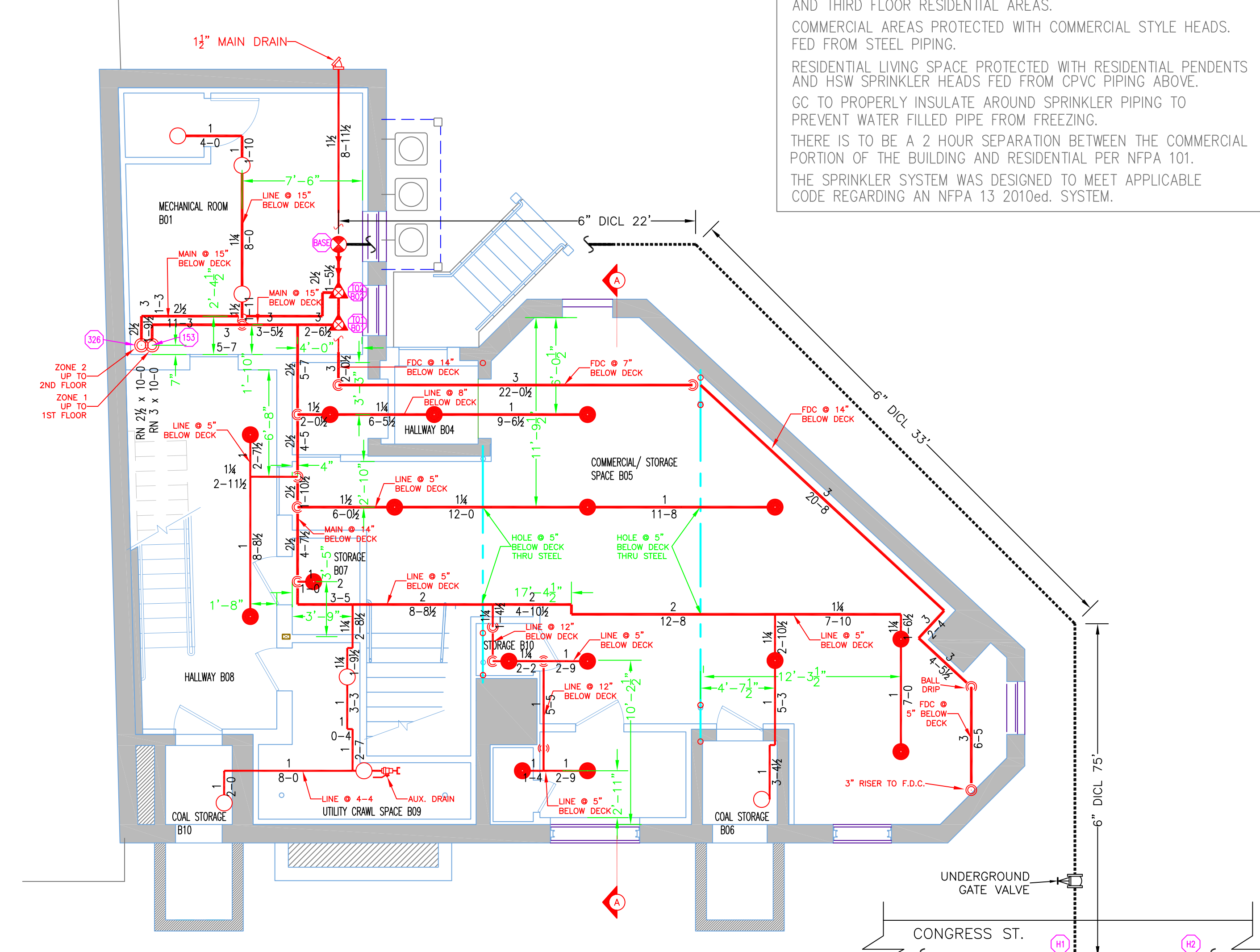
3 THIRD FLOOR (ZONE 2)
 TOTAL PROTECTED AREA 1,600 SQ.FT.
 SCALE 3/16" = 1'-0"

PROJECT DESCRIPTION

BUILDING CONST.:
 THE BUILDING IS 3 LEVEL ABOVE GRADE + A BASEMENT LEVEL. CONSTRUCTED OF WOOD FRAMING, FIBERGLASS - BLOWN IN INSULATION, AND GYP BOARD CONSTRUCTION. CPVC AND STEEL SPRINKLER PIPING AS SHOWN ON THIS PLAN.

BUILDING OCCUPANCY:
 THE BUILDING IS BEING REMODELED AND DESIGNED FOR MERCANTILE TYPE USAGE IN THE BASEMENT AND 1ST FLOOR. RESIDENTIAL LIVING TYPE USAGE ON THE SECOND AND THIRD FLOOR.

SPRINKLER SYSTEM DESIGN:
 THERE ARE 2 WET ZONED SPRINKLER SYSTEMS FOR THE BUILDING. THE FIRST ZONE IS FOR THE BASEMENT AND 1ST FLOOR COMMERCIAL AREAS AND THE SECOND ZONE IS FOR THE SECOND AND THIRD FLOOR RESIDENTIAL AREAS. COMMERCIAL AREAS PROTECTED WITH COMMERCIAL STYLE HEADS. FED FROM STEEL PIPING. RESIDENTIAL LIVING SPACE PROTECTED WITH RESIDENTIAL PENDENTS AND HSW SPRINKLER HEADS FED FROM CPVC PIPING ABOVE. GC TO PROPERLY INSULATE AROUND SPRINKLER PIPING TO PREVENT WATER FILLED PIPE FROM FREEZING. THERE IS TO BE A 2 HOUR SEPARATION BETWEEN THE COMMERCIAL PORTION OF THE BUILDING AND RESIDENTIAL PER NFPA 101. THE SPRINKLER SYSTEM WAS DESIGNED TO MEET APPLICABLE CODE REGARDING AN NFPA 13 2010ed. SYSTEM.



8 BASEMENT LEVEL (ZONE 1)
 TOTAL PROTECTED AREA 1,650 SQ.FT.
 SCALE 3/16" = 1'-0"



2 SECOND FLOOR (ZONE 2)
 TOTAL PROTECTED AREA 1,640 SQ.FT.
 SCALE 3/16" = 1'-0"

