

**660-662
CONGRESS
STREET**

PORTLAND, MAINE

ARCHITECT:
PRESENT ARCHITECTURE PLLC

66 WEST BROADWAY, SUITE 306
NEW YORK, NY, 10007
T: (207) 449-8513

CONTRACTOR:
BAYHILL BUILDING & DESIGN

P.O. BOX 178
SOUTH FREEPORT, ME 04078
T: (207) 865-9351

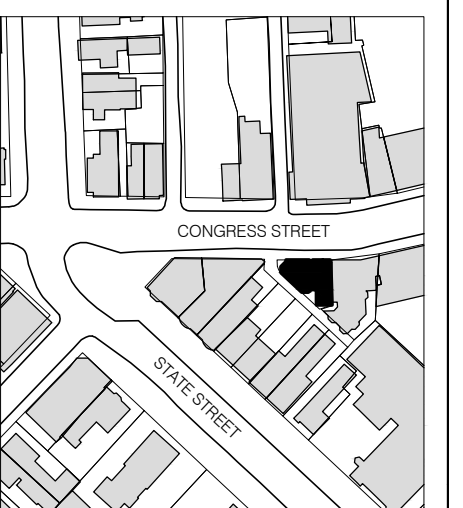
STRUCTURAL ENGINEER:
**ENGINEERING DESIGN
PROFESSIONALS**

P.O. BOX 575
FREEPORT, ME 04032
T: (207) 865-9505

OWNER:
A.K. LONGFELLOW LLC

660 CONGRESS STREET
PORTLAND, ME 04101

NO.	DATE	ISSUE
4	7/18/2014	PHASE 2 PERMIT ISSUE
3	1/15/2014	FIRE MARSHAL ISSUE
2	5/15/2013	PHASE 1 PERMIT ISSUE
1	3/28/2013	HPCA SET



NTS
N



B-SCAN:

DWG. CONTENTS:
**SECOND FLOOR
ELECTRICAL PLAN**

DATE: September 5, 2014
SCALE: 1/4" = 1'-0"

DWG. BY:
PROJECT NO.: 008

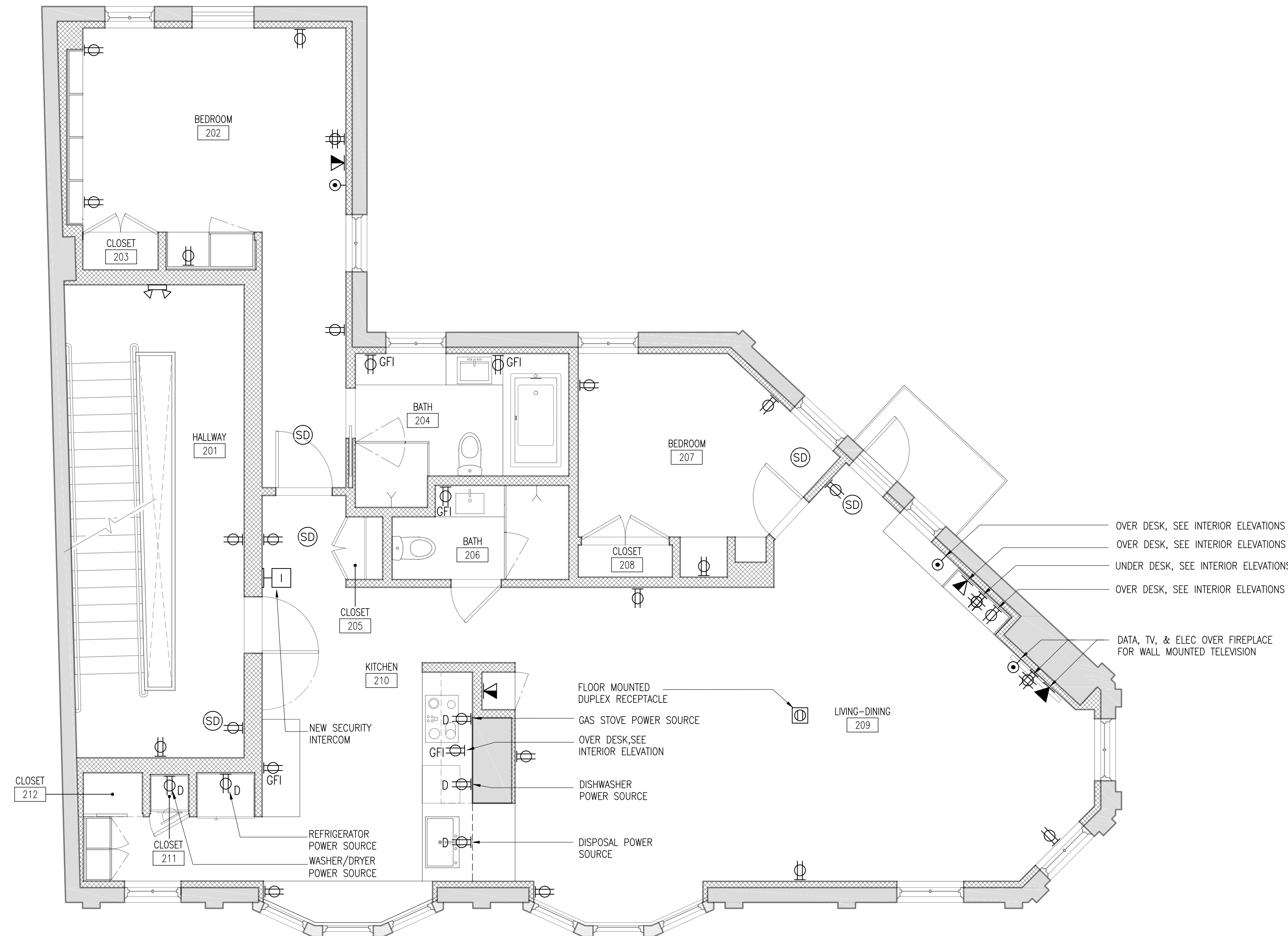
DWG. NO.: **E-102**

SHEET NO.:

- ELECTRICAL NOTES:**
- 1) ALL DIMMERS, SWITCHES, WALL PLATES & ENVIRONMENTAL CONTROLS TO BE LUTRON
 - 2) ALL HVAC GRILLES TO BE TITUS
 - 3) ALL ELECTRICAL WORK SHALL BE PERFORMED BY A LICENSED ELECTRICIAN WHO SHALL ARRANGE FOR AND OBTAIN INSPECTIONS AND REQUIRED SIGN-OFFS.
 - 4) ALL DIMMABLE FIXTURES TO BE COORDINATED W/ DIMMERS BY ELECTRICIAN
 - 5) ALL WIRING TO BE CONCEALED IN WALLS
 - 6) LOCATION OF FIXTURES TO BE COORDINATED PRIOR TO INSTALLATION
 - 7) SEE LIGHTING SCHEDULE FOR FIXTURE TYPE.
 - 8) ELECTRICIAN SHALL SUPPLY AND INSTALL ALL WIRING & TERMINATIONS FOR LOW VOLTAGE (TELEPHONE AND COMPUTER) CAT OR EQUAL.
 - 9) CONTRACTOR TO REVIEW ALL OUTLETS WITH DESIGNER PRIOR TO INSTALLATION.
 - 10) ALL OUTLETS IN KITCHEN AND BATHROOM TO BE GROUND FAULT INTERRUPTED.
 - 11) ALL ELECTRICAL FIXTURES TO BE REVIEWED W/ DESIGNER PRIOR TO ORDER & INSTALLATION
 - 12) ALL BATHROOM EXHAUST FANS TO BE NUTONE
 - 13) ALL CEILING FINISHES TO BE PAINTED CWB UNLESS OTHERWISE NOTED.

ELECTRICAL SYMBOLS

⌘	WALL SWITCH SPECIAL SWITCH TYPES: 2 - TWO WAY 3 - THREE WAY 4 - FOUR WAY D - DIMMER E - EXISTING LOCATION K - KEY OPERATED OC - OCCUPANT SENSOR P - PILOT LIGHTED
JS	JAMB SWITCH/DOOR SWITCH
EXIT	EXIT LIGHT
⌘ GFI	WALL MOUNTED DOUBLE DUPLEX RECEPTACLE GFI - GROUND FAULT INTERRUPTER D - DEDICATED DUPLEX RECEPTACLE E - EXISTING RECEPTACLE C - CLOCK RECEPTACLE SP - SURGE PROTECTION RECEPTACLE IG - ISOLATED GROUND RECEPTACLE
⌘	WALL MOUNTED DOUBLE DUPLEX RECEPTACLE
⌘ 220V	WALL MOUNTED SPECIAL PURPOSE RECEPTACLE SIZE AND TYPE AS INDICATED ON PLANS
⌘ 30A	WALL MOUNTED 208V, 1 PHASE RECEPTACLE NUMBER INDICATES RATED AMPERAGE
⌘	CEILING MOUNTED DUPLEX CONVENIENCE RECEPTACLE
⌘	CEILING MOUNTED JUNCTION BOX
⌘	FLOOR MOUNTED JUNCTION BOX
⌘	WALL MOUNTED JUNCTION BOX
⌘	4" SQUARE BACKBOX FOR WALL MOUNTED DATA OUTLET
⌘	4" SQUARE BACKBOX FOR WALL MOUNTED TELE/DATA OUTLET
⌘	4" SQUARE BACKBOX FOR WALL MOUNTED TELEPHONE OUTLET
⌘	4" SQUARE BACKBOX FOR WALL MOUNTED CABLE TELEVISION
I	INTERCOM STATION
P	FIRE ALARM PULL BOX
⌘ SD	SMOKE/CO DETECTOR WITH SOUNDER BASE, 120V CONNECTION AND DRY CONTACT
⌘ H	HEAT DETECTOR WITH SOUNDER BASE, 120V CONNECTION AND DRY CONTACT
⌘ VA	VISUAL ALARM CONNECTED TO ⌘ SP
⌘ SP	STROBE PANEL
⌘	EMERGENCY LIGHT



1 2ND FLOOR ELECTRICAL PLAN
E-102 1/4" = 1'-0"