

**660-662
CONGRESS
STREET**

PORTLAND, MAINE

ARCHITECT:
PRESENT ARCHITECTURE PLLC
66 WEST BROADWAY, SUITE 306
NEW YORK, NY 10007
T: (207) 449-9513

CONTRACTOR:
BAYHILL BUILDING & DESIGN

P.O. BOX 178
SOUTH FREEPORT, ME 04078
T: (207) 865-9351

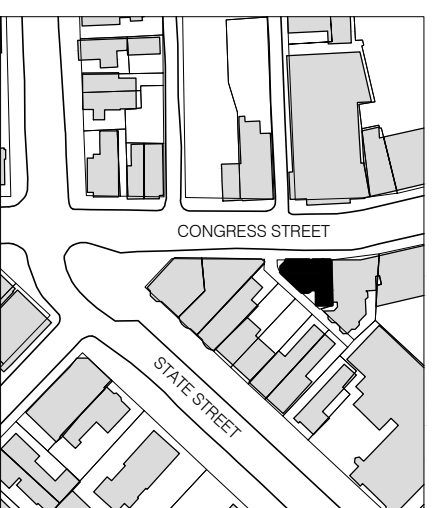
STRUCTURAL ENGINEER:
**ENGINEERING DESIGN
PROFESSIONALS**

P.O. BOX 575
FREEPORT, ME 04032
T: (207) 865-9505

OWNER:
A.K. LONGFELLOW LLC

660 CONGRESS STREET
PORTLAND, ME 04101

NO.	DATE	ISSUE
4	7/18/2014	PHASE 2 PERMIT ISSUE
3	1/15/2014	FIRE MARSHAL ISSUE
2	5/15/2013	PHASE 1 PERMIT ISSUE
1	3/28/2013	HPCA SET



NTS



B-SCAN:

DWG. CONTENTS:
LIFE SAFETY PLANS

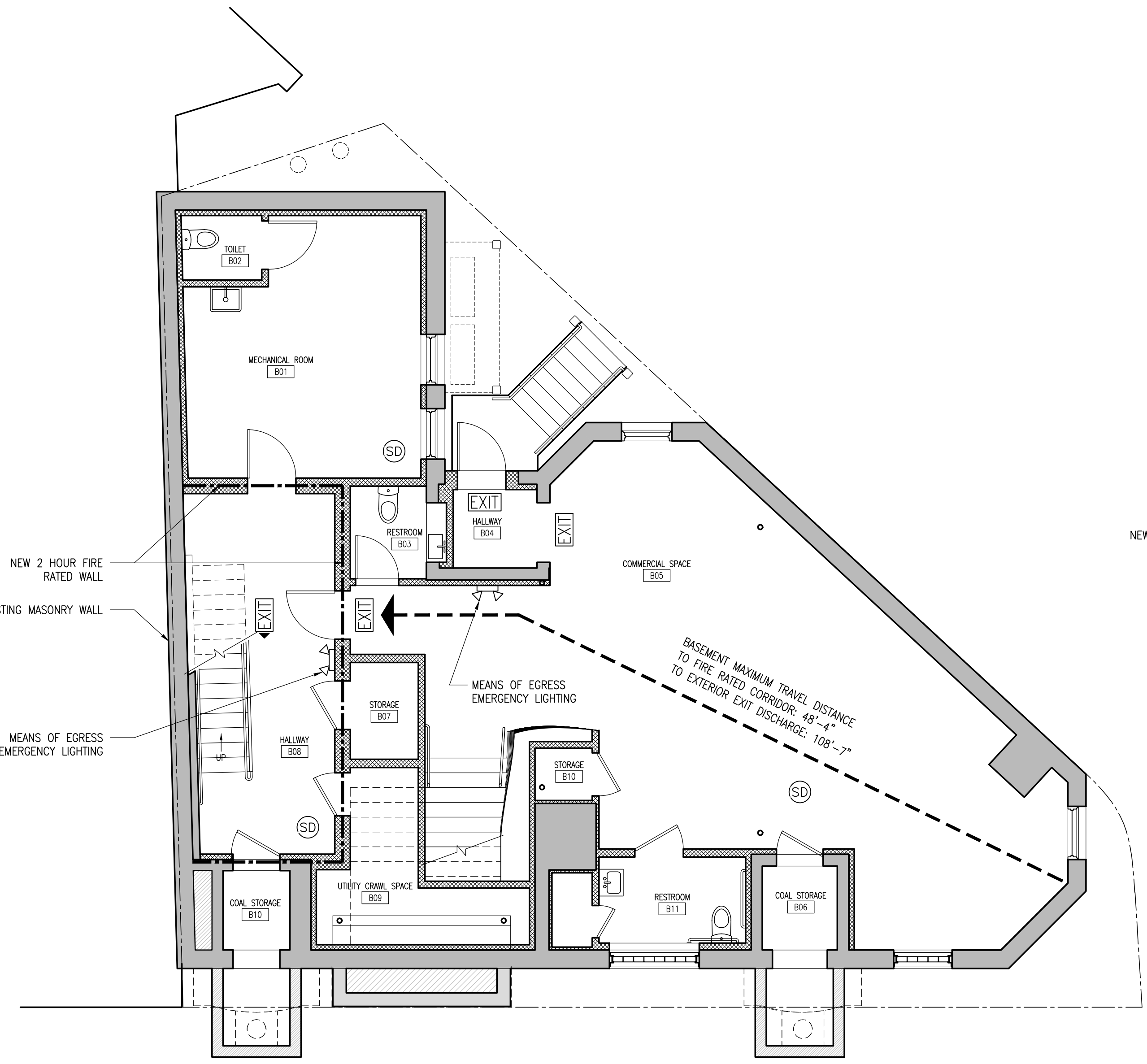
DATE: September 5, 2014
SCALE: 3/16" = 1'-0"
DWG. BY:
PROJECT NO.: 008

DWG. NO.: **A-005**

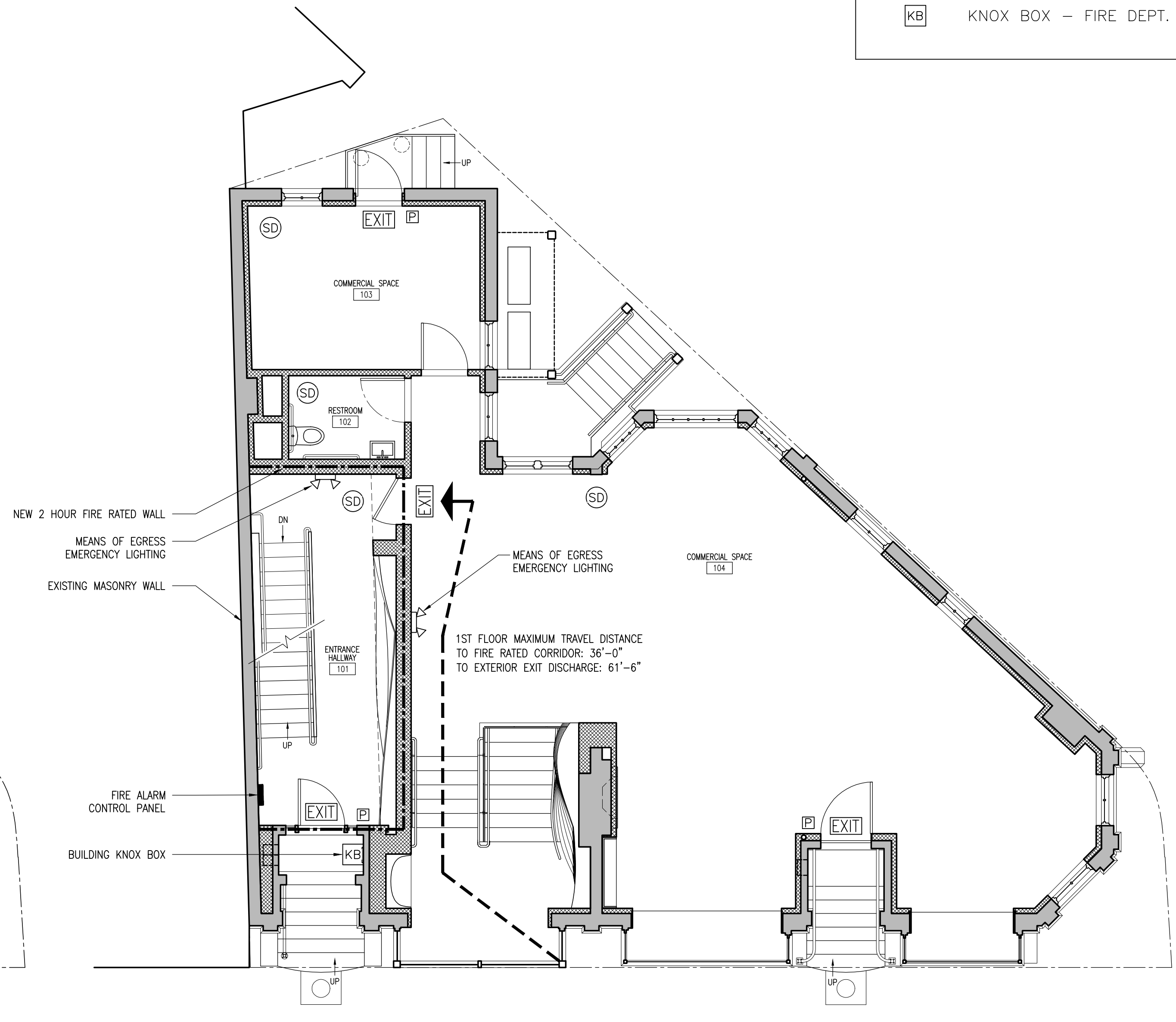
SHEET NO.:

LEGEND

- 2 HOUR FIRE RATED WALL
- EMERGENCY LIGHT
- EXIT SIGN
- FIRE ALARM PULL BOX
- FIRE EXTINGUISHER
- CEILING SMOKE & CARBON MONOXIDE DETECTOR/SIREN
- WALL SMOKE & CARBON MONOXIDE DETECTOR/SIREN
- KNOX BOX - FIRE DEPT. KEYS



1 BASEMENT LIFE SAFETY PLAN
A-005 3/16" = 1'-0"



2 1ST FLOOR LIFE SAFETY PLAN
A-005 3/16" = 1'-0"