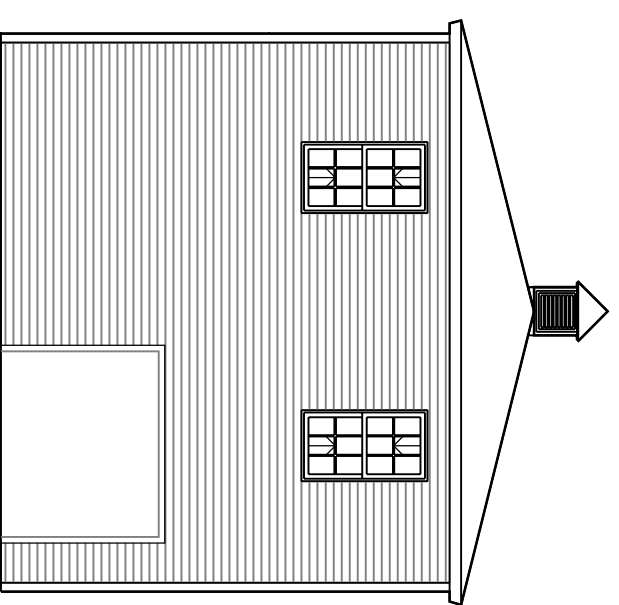
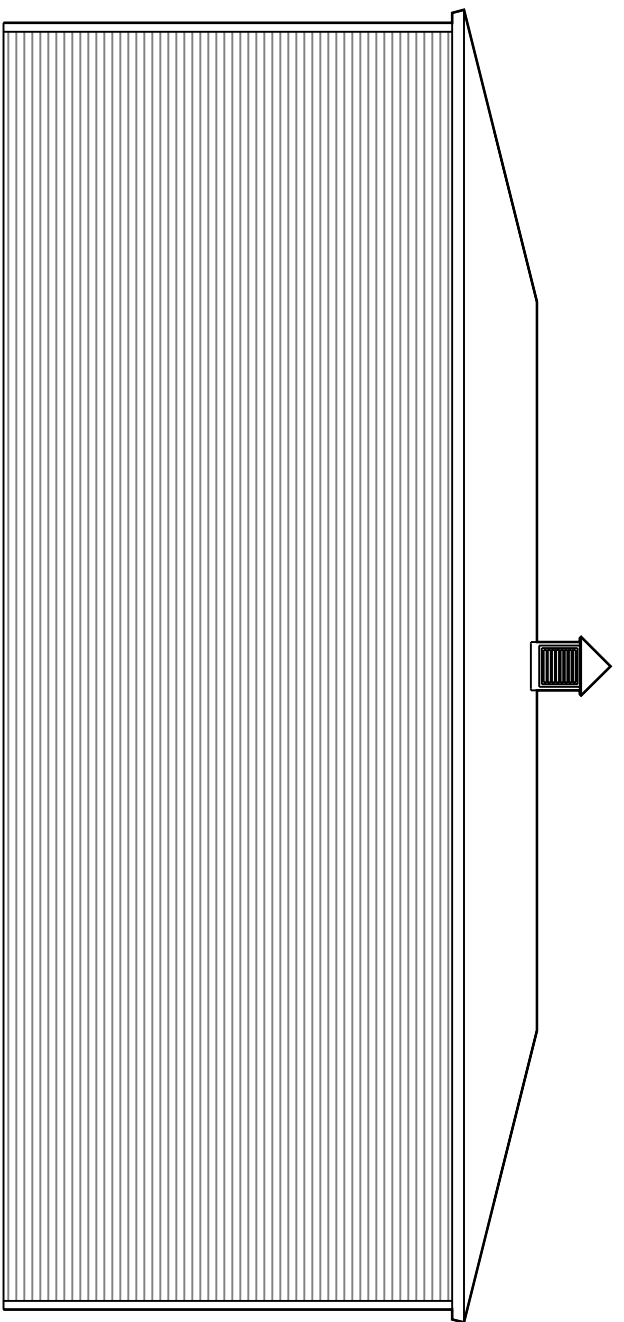


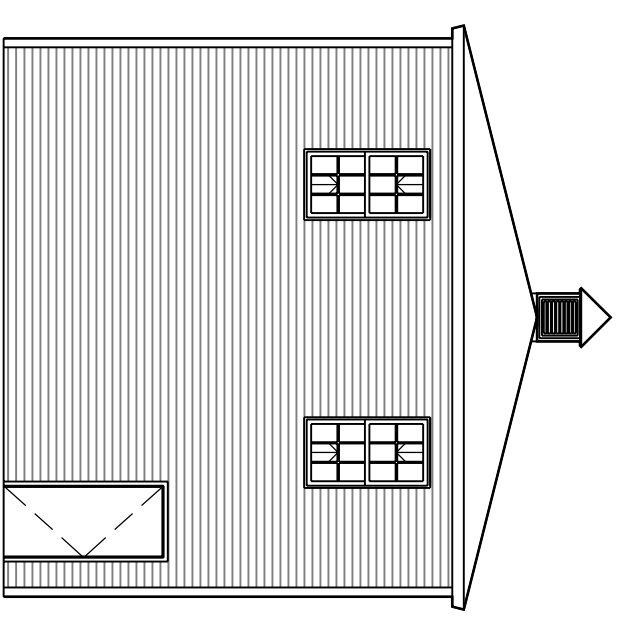
1 EAST ELEVATION
1/8" = 1'-0"



2 SOUTH ELEVATION
1/8" = 1'-0"



3 WEST ELEVATION
1/8" = 1'-0"



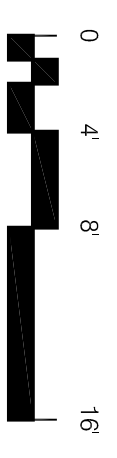
4 NORTH ELEVATION
1/8" = 1'-0"

PROSPECT



DESIGN

58 FORE ST., PORTLAND, ME
WWW.PROSPECTDESIGN.ME
TEL: 207-749-7400



EXISTING ELEVATIONS
ISAACS

DATE:	7.15.2015
DRAWN BY:	BB
A-2.1	