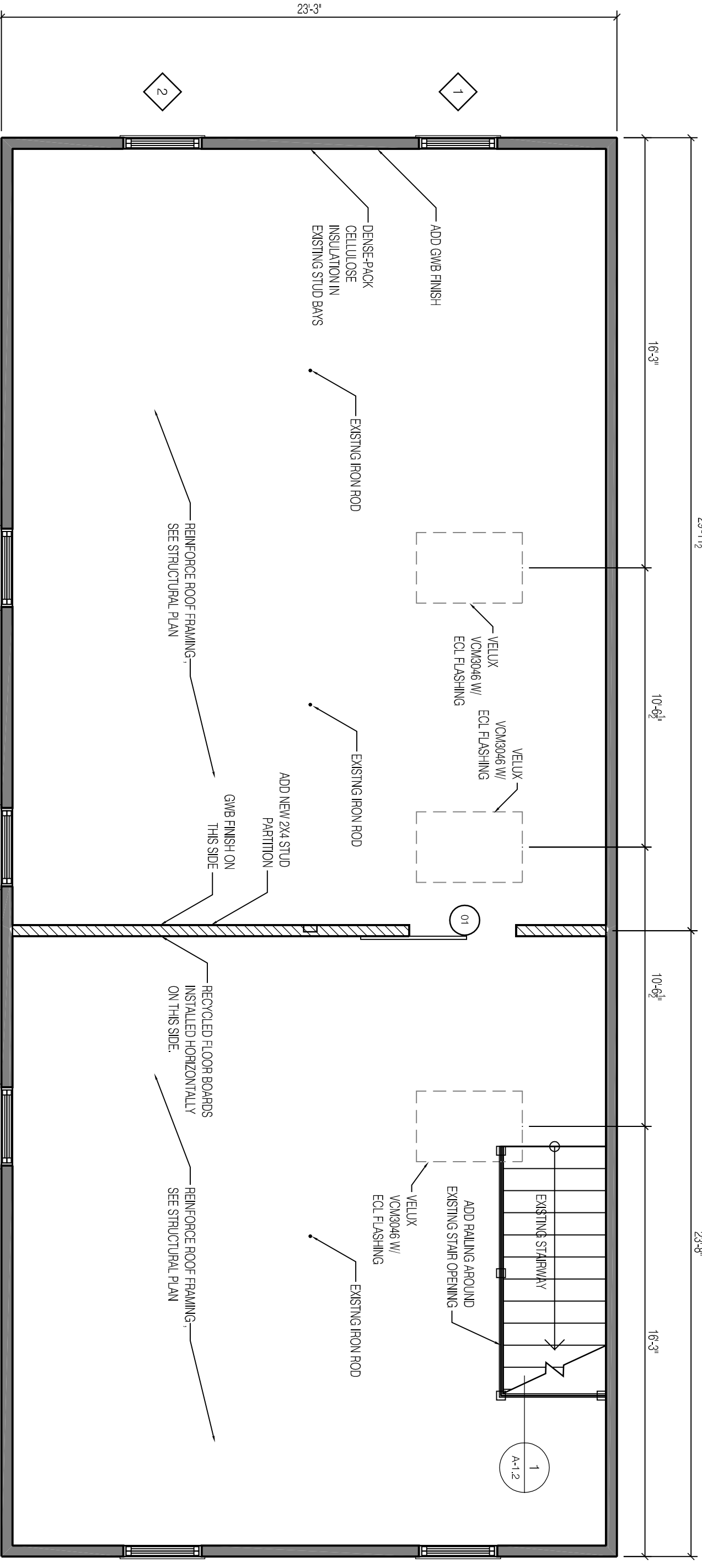


29'-11 1/2"

23'-8"

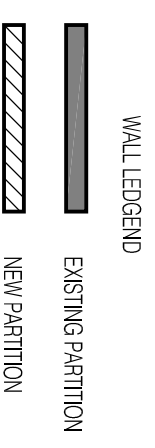


### SECOND FLOOR PROPOSED PLAN

1/4" = 1'-0"

WINDOW SCHEDULE					
MARK	SIZE		TYPE	MATERIAL	NOTES
	WIDTH	HEIGHT			
1	2'-9"	5'-1"	DOUBLE HUNG	WOOD	---
2	2'-9"	5'-1"	DOUBLE HUNG	WOOD	---
3	2'-9"	5'-1"	DOUBLE HUNG	WOOD	---
4	2'-9"	5'-1"	DOUBLE HUNG	WOOD	---
5	2'-9"	5'-1"	DOUBLE HUNG	WOOD	---
6	2'-9"	5'-1"	DOUBLE HUNG	WOOD	---
7	2'-9"	5'-1"	DOUBLE HUNG	WOOD	---

- WINDOW NOTES:**
- ALL WINDOWS SHALL BE LOW E, ARGON FILLED INSULATING GLASS.
  - ALL WINDOWS TO HAVE A UFACTOR RATING OF 0.30 OR BETTER.
  - ALL WINDOW GRILLES SHALL BE SIMULATED DIVIDED LITE.
  - ALL GLAZING SHALL CONFORM TO IRC 2012 R308
  - WINDOW GLAZING WITH SILL HTS LESS THAN 18" TO BE TEMPERED.
  - WINDOW GLAZING 24" OR CLOSER TO DOORS SHALL BE TEMPERED.
  - WINDOW GLAZING 36" OR CLOSER TO STAIRWAYS AND 36" OR LESS ABOVE FLOOR SHALL BE TEMPERED.
  - WINDOW GLAZING WITHIN 60" OF THE BOTTOM OF A STAIRWAY AND LESS THAN 36" ABOVE THE FLOOR SHALL BE TEMPERED.
  - ALL WINDOWS SHALL CONFORM TO R312.2 WINDOW FALL PROTECTION
  - ALL WINDOWS WITH SILL HTS LESS THAN 24" AND MORE THAN 72" ABOVE GRADE TO HAVE OPENING LIMITERS TO RESTRICT OPENING TO 4".



DATE:	7.23.2015
DRAWN BY:	BB