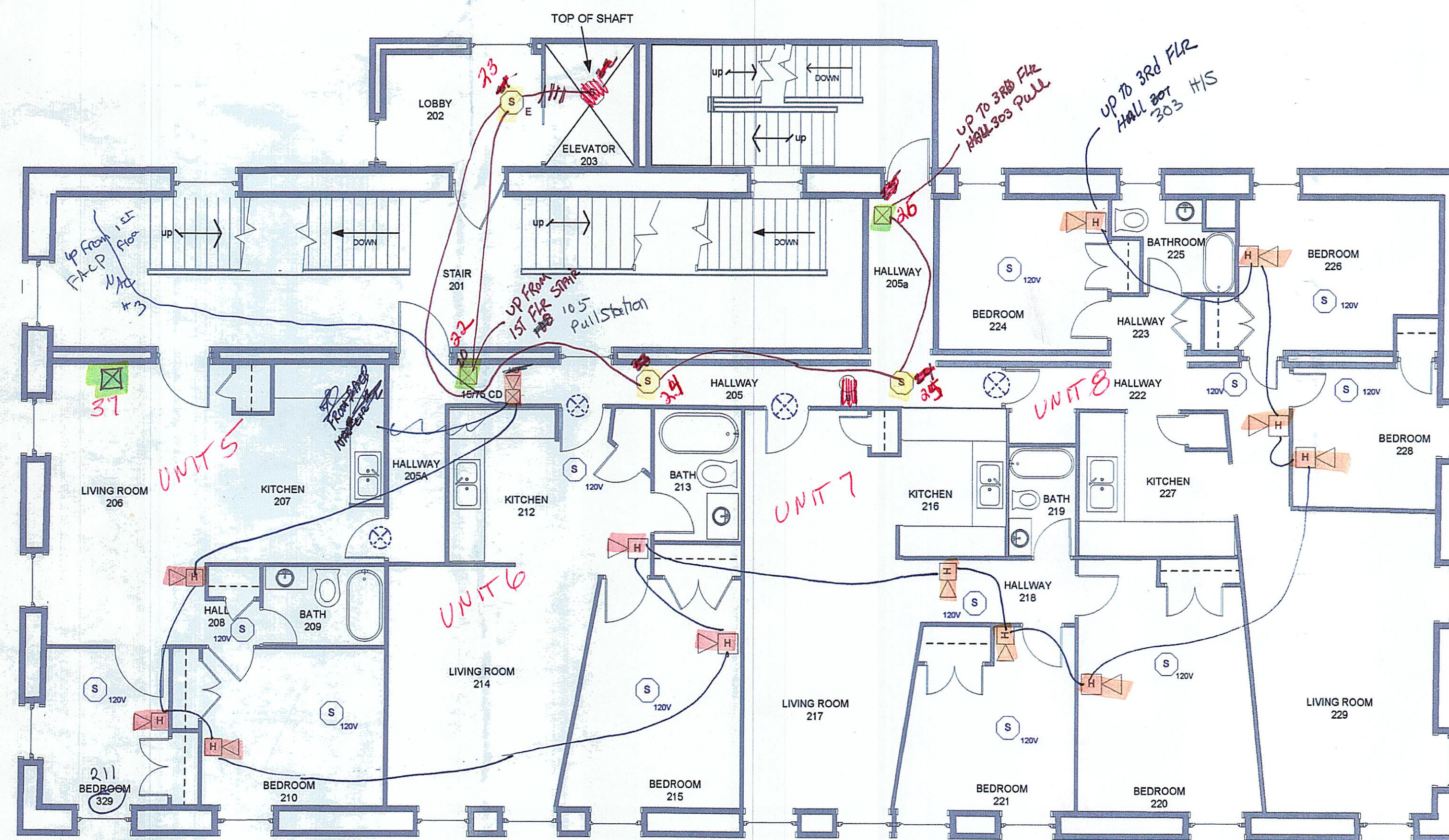


THIRD FLOOR



SECOND FLOOR

4 TR
H/S 1 .075
H 8 .12

H/S 1 .075
H 8 .12

H/S 1 .075
H 12 = .15

GENERAL NOTES:

1. FIRE ALARM SYSTEM WIRING SHALL COMPLY WITH THE NATIONAL ELECTRICAL CODE, APPLICABLE STATE AND LOCAL CODES, AND SHALL BE COORDINATED WITH THE LOCAL AUTHORITY HAVING JURISDICTION.
2. CAUTION: DO NOT CONNECT ANY POWER TO THE CONTROL PANEL (BATTERIES OR 120V AC) UNTIL ALL OTHER FIELD WIRING IS TESTED AND CONNECTED.
3. DO NOT INSTALL FIRE ALARM CONTROL PANEL OR SMOKE DETECTORS IN AN UNHEATED AREA.
4. DO NOT INSTALL ANY AC CURRENT-CARRYING CONDUCTORS CLOSE TO OR IN THE SAME RACEWAY WITH FIRE ALARM SYSTEM CONDUCTORS.
5. SOLID LINES REPRESENT CONNECTIONS TO BE MADE BY THE SYSTEM INSTALLER.
6. SEE MODEL _____ INSTALLATION MANUAL FOR ADDITIONAL WIRING INSTRUCTIONS.
7. ALL RELAYS ARE SHOWN IN NORMAL SUPERVISORY CONDITION. ALL RELAYS ARE FORM "C" TYPE.

INSTALLATION NOTES

1. SMOKE DETECTORS SHALL NOT BE MOUNTED ANY CLOSER THAN 3' FROM ANY AIR DUCT OPENINGS
2. ELEVATOR LOBBY SMOKE DETECTORS SHALL BE MOUNTED WITHIN 10' OF THE ELEVATOR DOOR
3. MANUAL PULL STATIONS SHALL BE MOUNTED PER ADA REQUIREMENTS: 48" AFF OR 42" AFF TO COMPLY WITH SIDE/FRONT REACH REQUIREMENTS
4. WALL MOUNTED HORN/STROBES & STROBES SHALL BE MOUNTED 6" FROM CEILING, OR 96" TO 80" AFF TO THE CENTER OF STROBE
5. HORN/STROBES & STROBES SHALL BE MOUNTED 15" FROM THE CORNER OF THE WALL. IF THIS IS NOT POSSIBLE, DEVICE SHALL BE CENTERED ON THAT WALL.
6. CEILING MOUNTED HALLWAY DEVICES SHALL BE LOCATED IN A SYMMETRICAL MANNER DOWN CENTER OF HALLWAY WHEN POSSIBLE

- SMOKE DETECTOR
- ELEVATOR RECALL SMOKE DETECTOR
- 120 VOLT SMOKE DETECTOR (NOT CONNECTED TO FACP)
- HI-DECIBEL HORN/STROBE (NOTE CD RATING)
- SINGLE GANG HORN
- PULL STATION
- REMOTE LED 120 VAC (NOT CONNECTED TO FACP)
- 4" BELL (NOT CONNECTED TO FACP)
- horn/strobe

PROTECTION PROFESSIONALS

CONSULTANT

139 Newbury Street
Portland, ME 04101

Phone: (207) 775-5755
Fax: (207) 775-1895

SAINT DOMINIC'S FAMILY HOUSING

PORTLAND, ME

PROJECT NAME: **SAINT DOMINIC'S FAMILY HOUSING**

DRAWING NAME: **SECOND & THIRD FLOOR DEVICE LAYOUT & WIRING**

REVISIONS

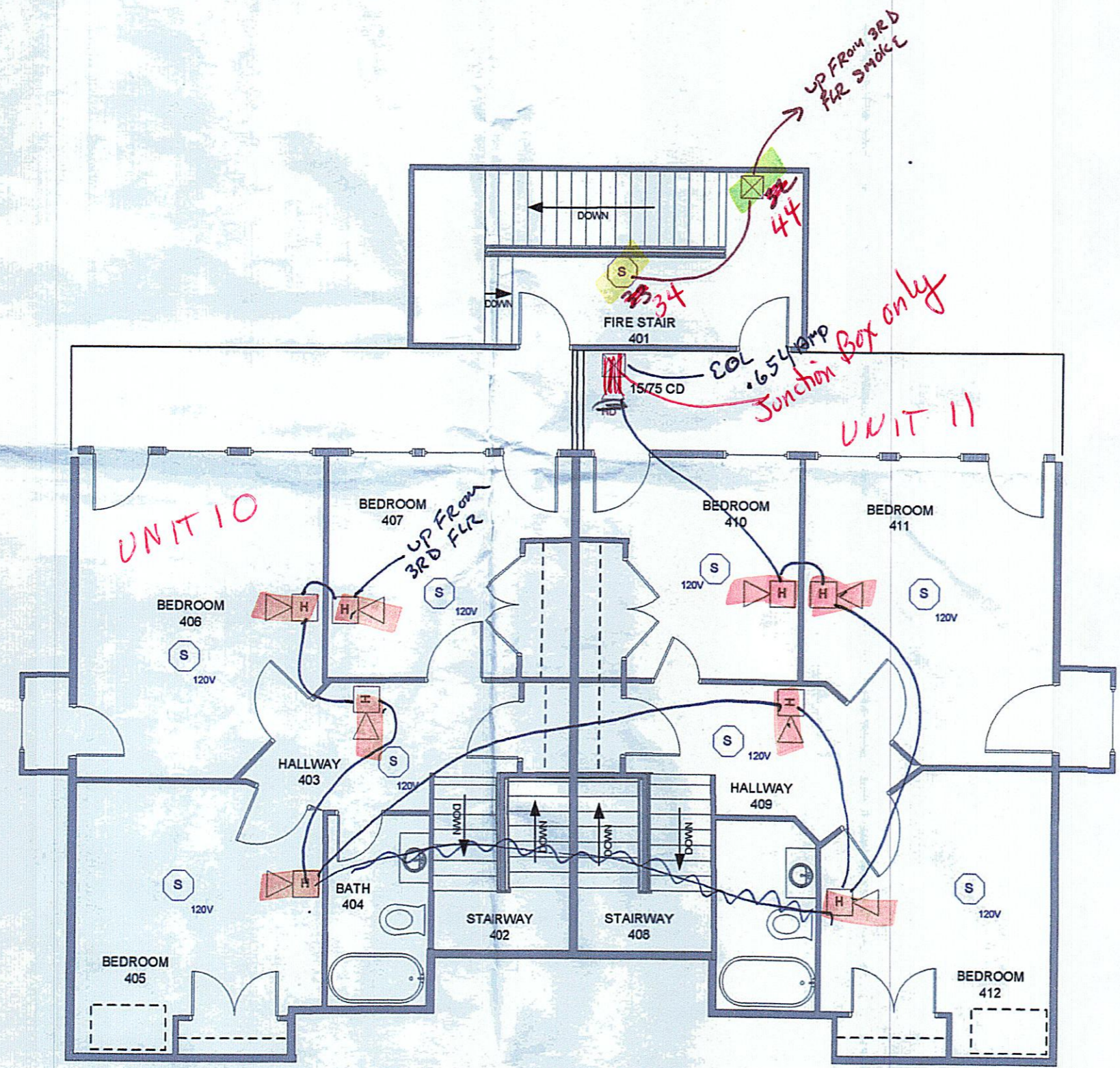
DATE: 06/12/03

SCALE: NTS

DRAWN: CTS

APPROVED: SFA

SHEET: F-2








HDI
H S

GENERAL NOTES:

1. FIRE ALARM SYSTEM WIRING SHALL COMPLY WITH THE NATIONAL ELECTRICAL CODE, APPLICABLE STATE AND LOCAL CODES, AND SHALL BE COORDINATED WITH THE LOCAL AUTHORITY HAVING JURISDICTION.
2. CAUTION: DO NOT CONNECT ANY POWER TO THE CONTROL PANEL (BATTERIES OR 120V AC) UNTIL ALL OTHER FIELD WIRING IS TESTED AND CONNECTED.
3. DO NOT INSTALL FIRE ALARM CONTROL PANEL OR SMOKE DETECTORS IN AN UNHEATED AREA.
4. DO NOT INSTALL ANY AC CURRENT-CARRYING CONDUCTORS CLOSE TO OR IN THE SAME RACEWAY WITH FIRE ALARM SYSTEM CONDUCTORS.
5. SOLID LINES REPRESENT CONNECTIONS TO BE MADE BY THE SYSTEM INSTALLER.
6. SEE MODEL _____ INSTALLATION MANUAL FOR ADDITIONAL WIRING INSTRUCTIONS.
7. ALL RELAYS ARE SHOWN IN NORMAL SUPERVISORY CONDITION. ALL RELAYS ARE FORM "C" TYPE.

INSTALLATION NOTES

1. SMOKE DETECTORS SHALL NOT BE MOUNTED ANY CLOSER THAN 3' FROM ANY AIR DUCT OPENINGS
2. ELEVATOR LOBBY SMOKE DETECTORS SHALL BE MOUNTED WITHIN 10' OF THE ELEVATOR DOOR
3. MANUAL PULL STATIONS SHALL BE MOUNTED PER ADA REQUIREMENTS: 48" AFF OR 42" AFF TO COMPLY WITH SIDE/FRONT REACH REQUIREMENTS
4. WALL MOUNTED HORN/STROBES & STROBES SHALL BE MOUNTED 6" FROM CEILING, OR 96" TO 80" AFF TO THE CENTER OF STROBE
5. HORN/STROBES & STROBES SHALL BE MOUNTED 15' FROM THE CORNER OF THE WALL. IF THIS IS NOT POSSIBLE, DEVICE SHALL BE CENTERED ON THAT WALL.
6. CBLING MOUNTED HALLWAY DEVICES SHALL BE LOCATED IN A SYMMETRICAL MANNER DOWN CENTER OF HALLWAY WHEN POSSIBLE

-  SMOKE DETECTOR
-  120V SMOKE DETECTOR (NOT CONNECTED TO FACP)
-  HI-DECIBEL HORN/STROBE (NOTE CD RATING)
-  SINGLEGANG HORN
-  PULL STATION

CONSULTANT **PROTECTION PROFESSIONALS**

139 Newbury Street
Portland, ME 04101
Phone: (207) 775-5755
Fax: (207) 775-1895

PROJECT NAME:
ST. DOMINIC'S FAMILY HOUSING PORTLAND, MAINE

DRAWING NAME:
FOURTH FLOOR DEVICE LAYOUT & WIRING

REVISIONS

DATE: 06/12/03
SCALE: NTS
DRAWN: CTS
APPROVED: SFA

SHEET:

F-3