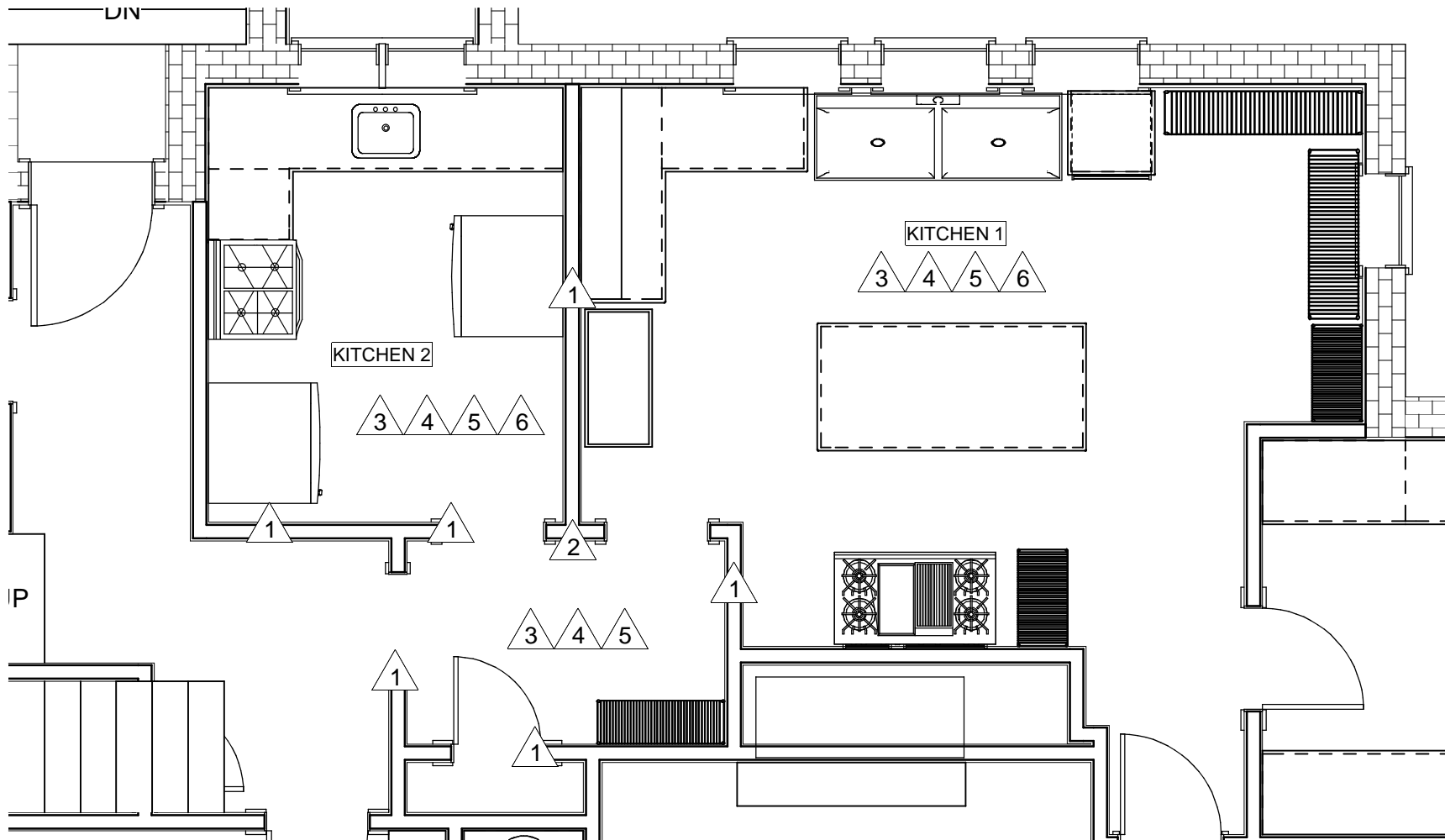


- DEMOLITION NOTES:
- 1 - REMOVE WALLS AND DOORS
 - 2 - THIS AREA TO BE REPLACED WITH A STRUCTURAL COLUMN. SEE ENGINEER'S PLAN FOR STRUCTURAL SOLUTION
 - 3 - REMOVE EQUIPMENT, STORAGE UNITS AND CABINETS. SALVAGE OR DISPOSE OF PER OWNER'S DIRECTION
 - 4 - REMOVE THE CEILINGS IN THESE AREAS - PREP FOR ACOUSTICAL INSULATION AND NEW CEILING FINISH
 - 5 - REMOVE FLOORING FINISHES AND PREP FOR NEW FLOORING MATERIALS
 - 6 - DEMO ABANDONED MECHANICAL SYSTEMS AND PREPARE FOR NEW EQUIPMENT REQUIREMENTS



1 SK1 KITCHEN AREA DEMOLITION PLAN AND NOTES
SCALE: 1/4" = 1" - 0"

FOR CONSTRUCTION