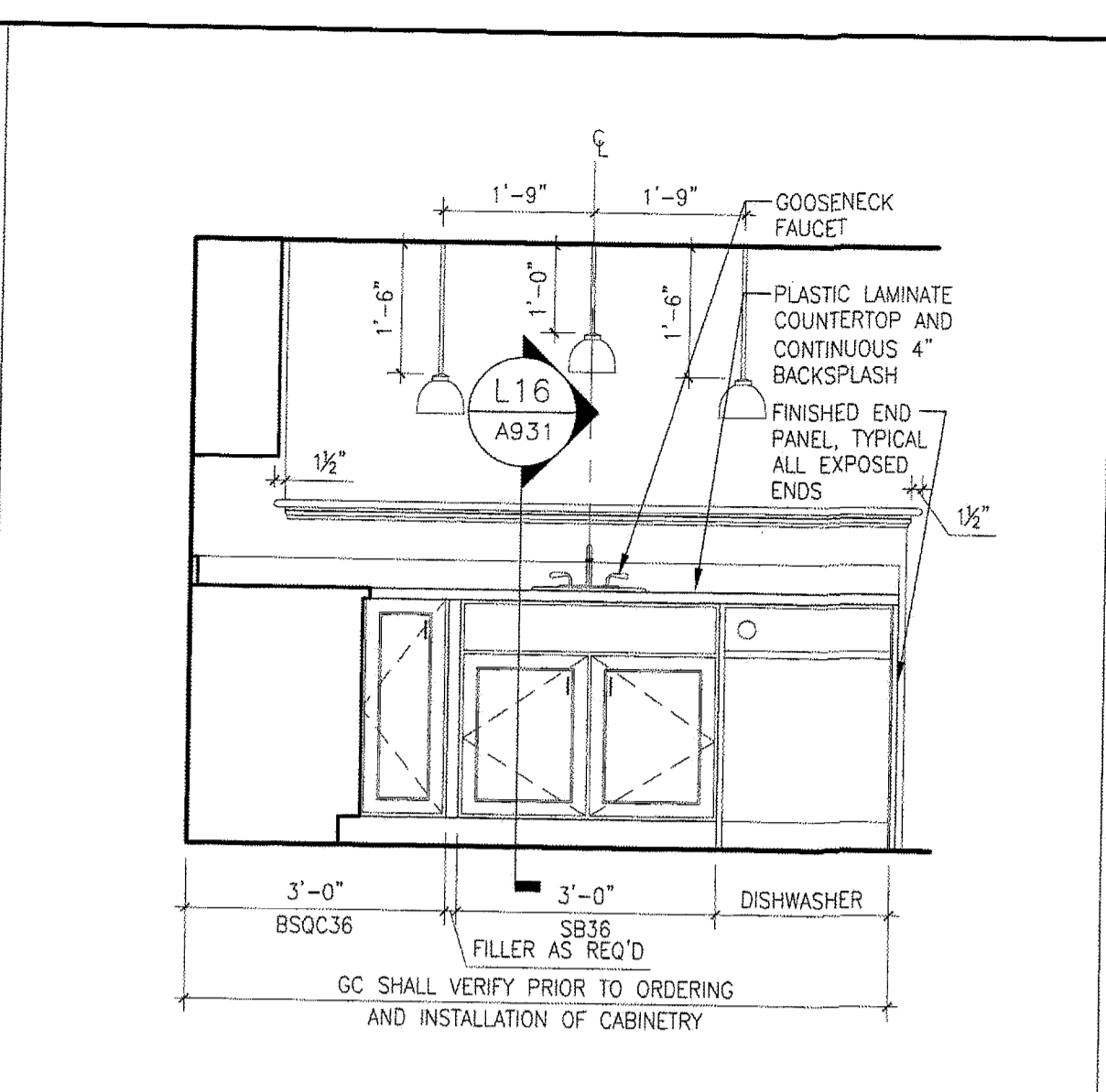
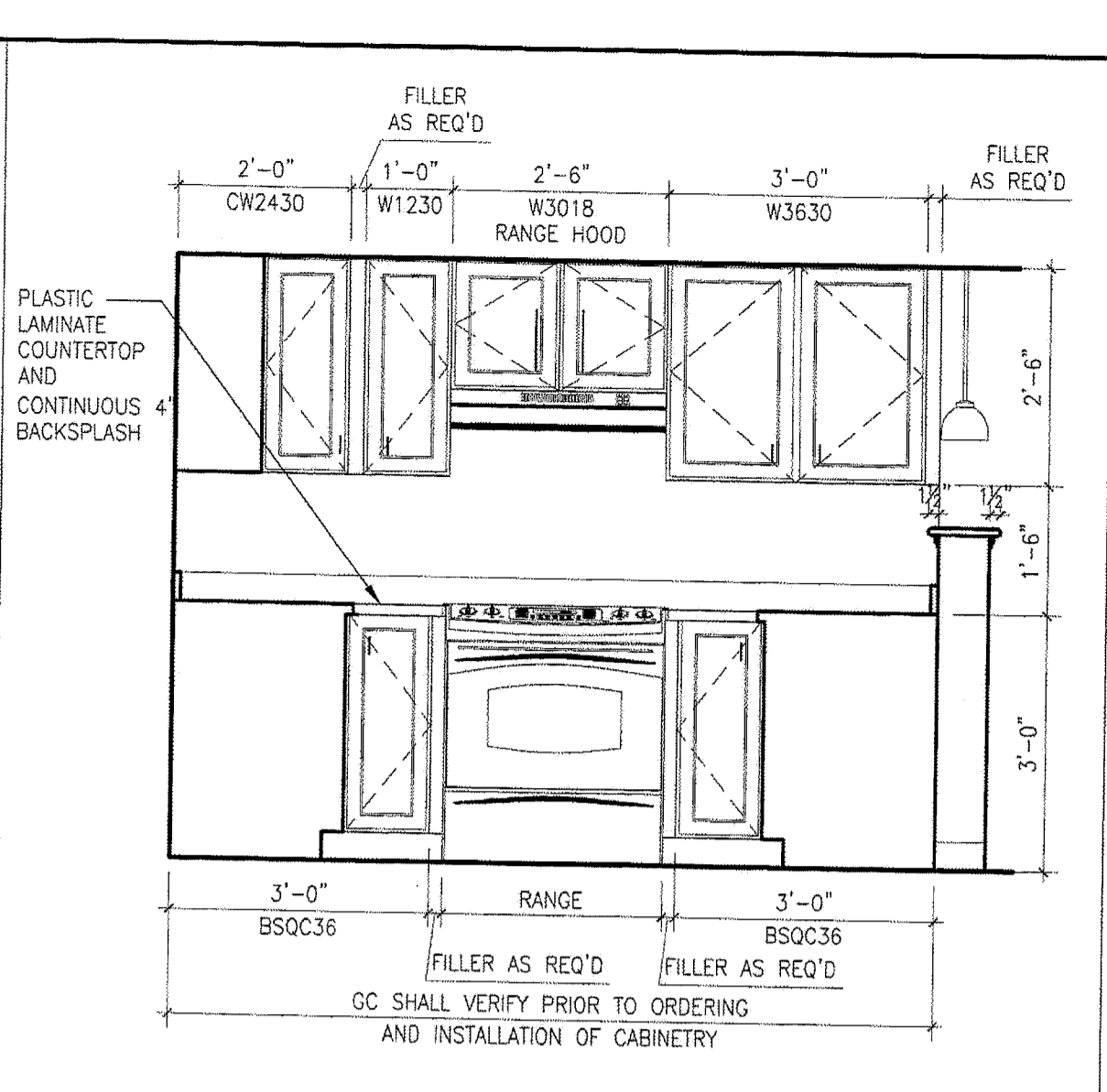


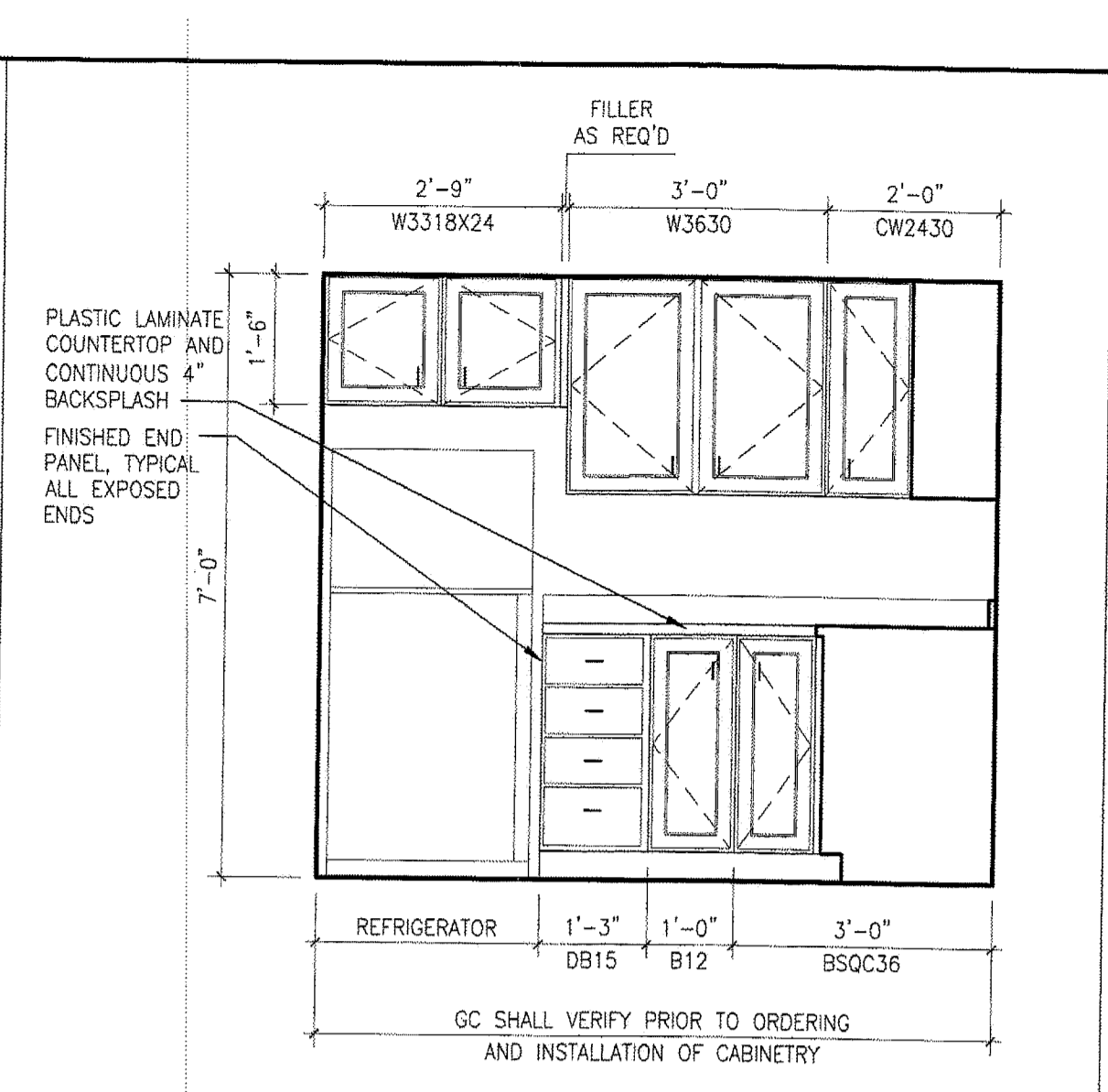
M1 LAUNDRY CLOSET
1/2"x1'-0" WASHER/DRYER AND FOLDING COUNTER-APT 403



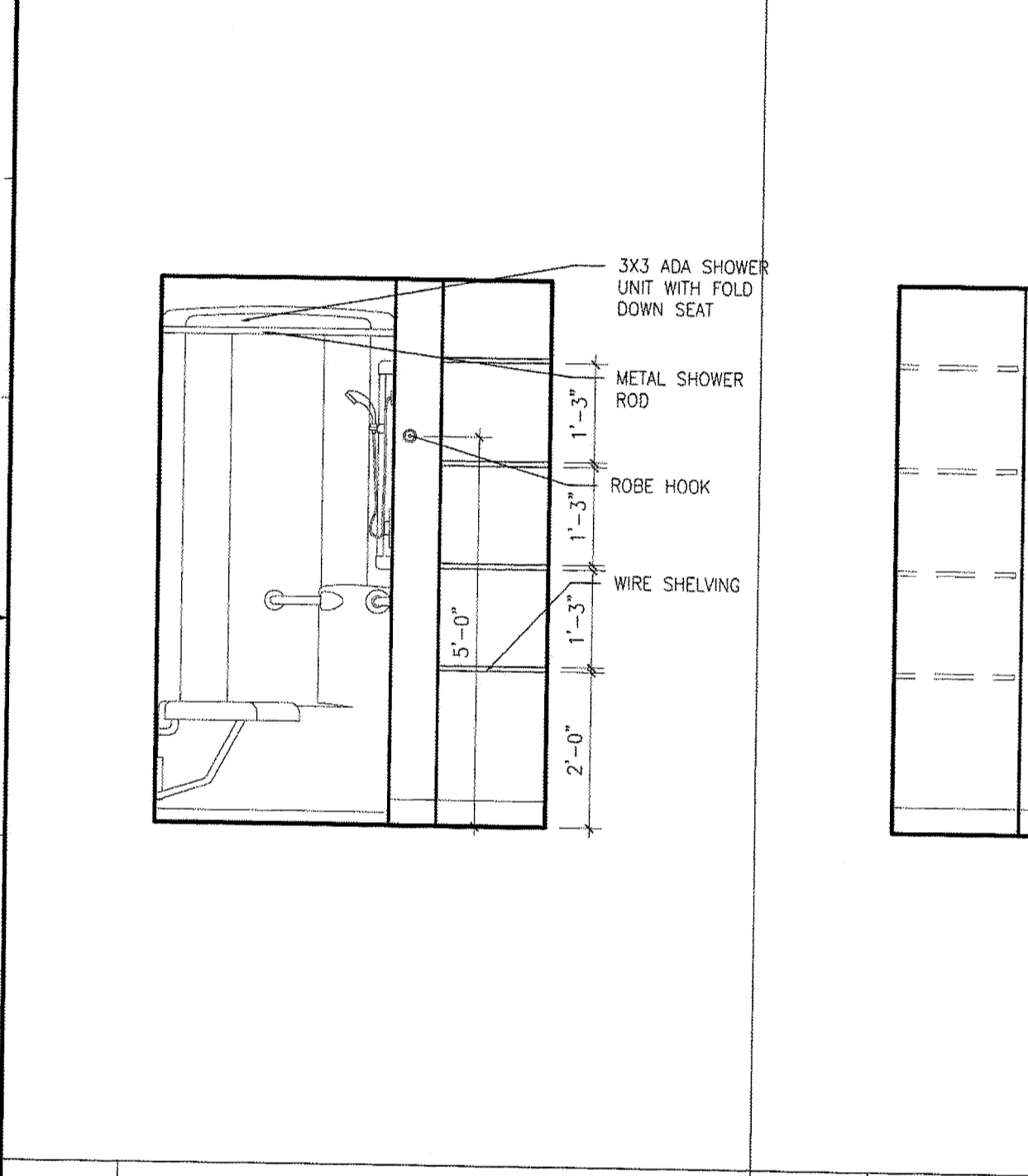
M5 KITCHEN ELEVATION
1/2"x1'-0" SOUTH ELEVATION-APT 403



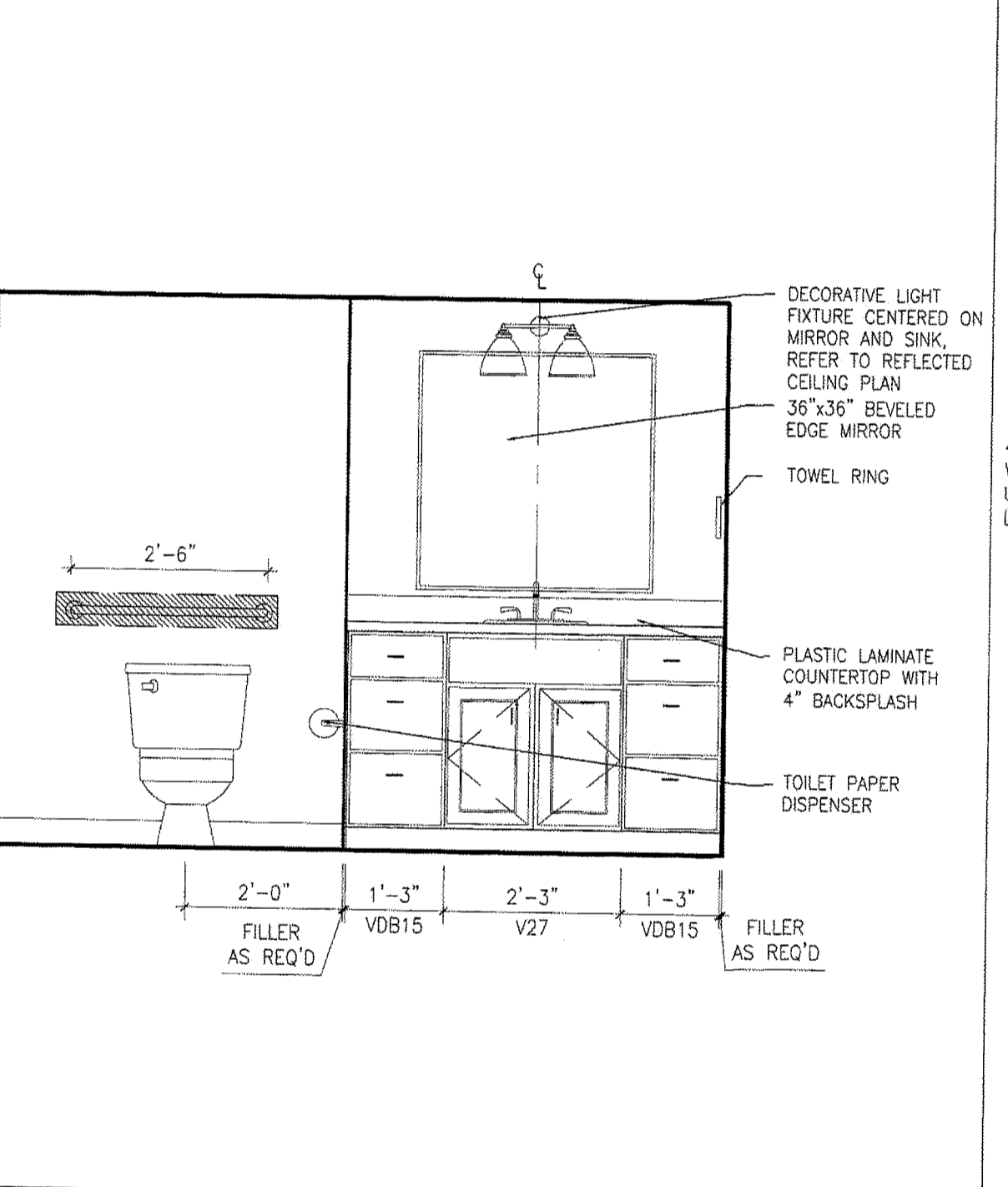
M9 KITCHEN ELEVATION
1/2"x1'-0" EAST ELEVATION-APT 403



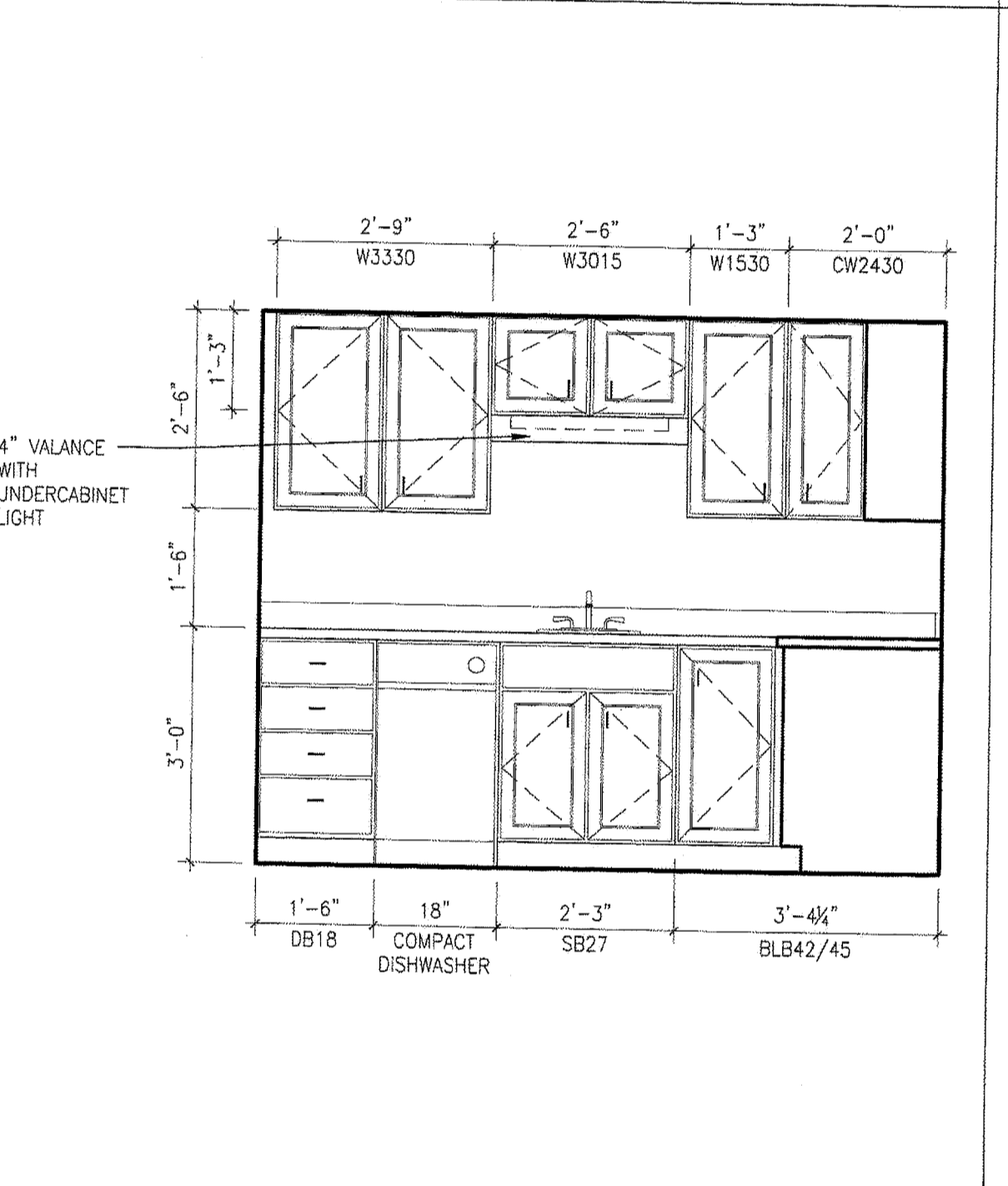
M13 KITCHEN ELEVATION
1/2"x1'-0" NORTH ELEVATION-APT 403



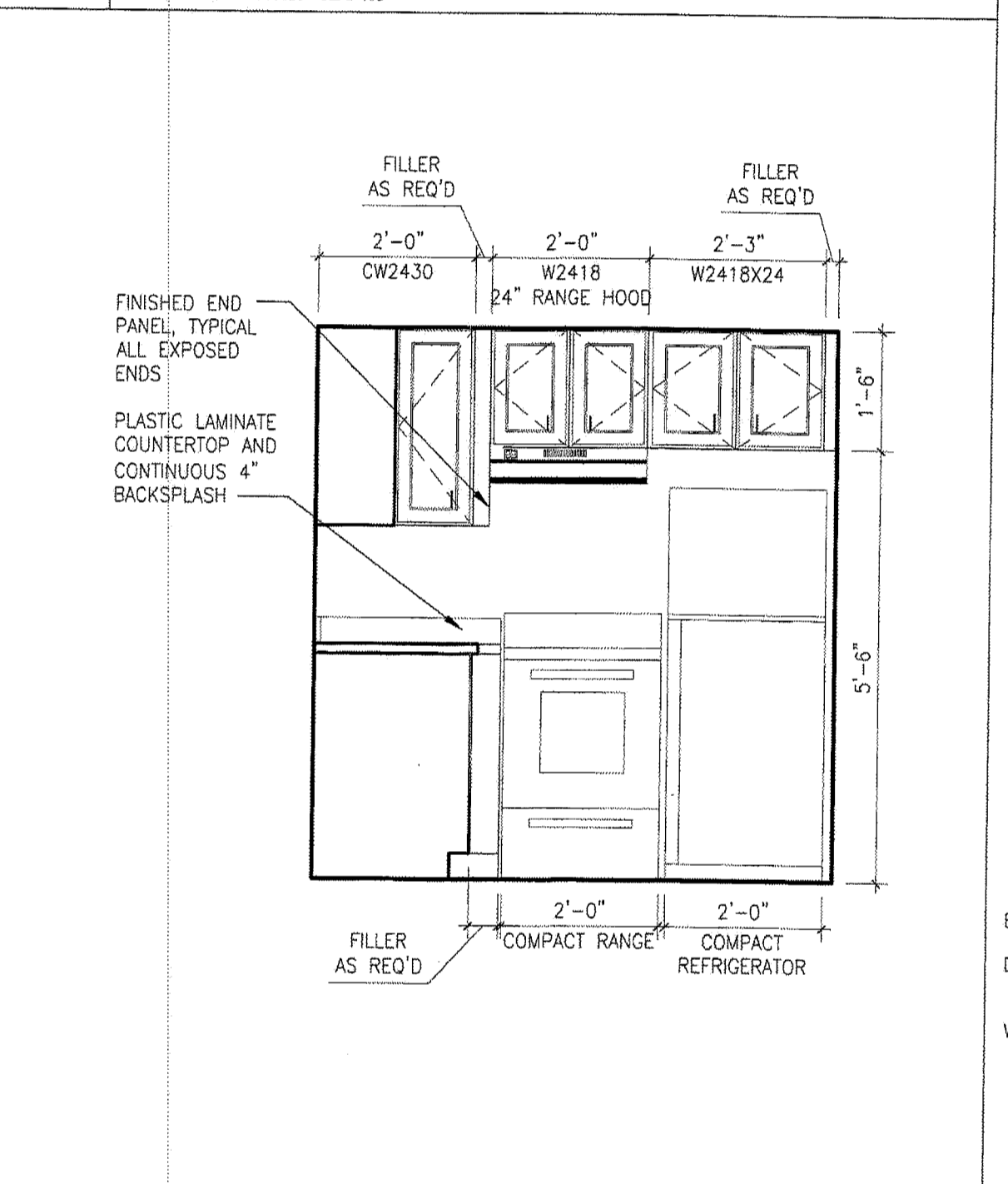
F1 BATHROOM ELEVATION
1/2"x1'-0" SHOWER AND SHELVING-APT 403



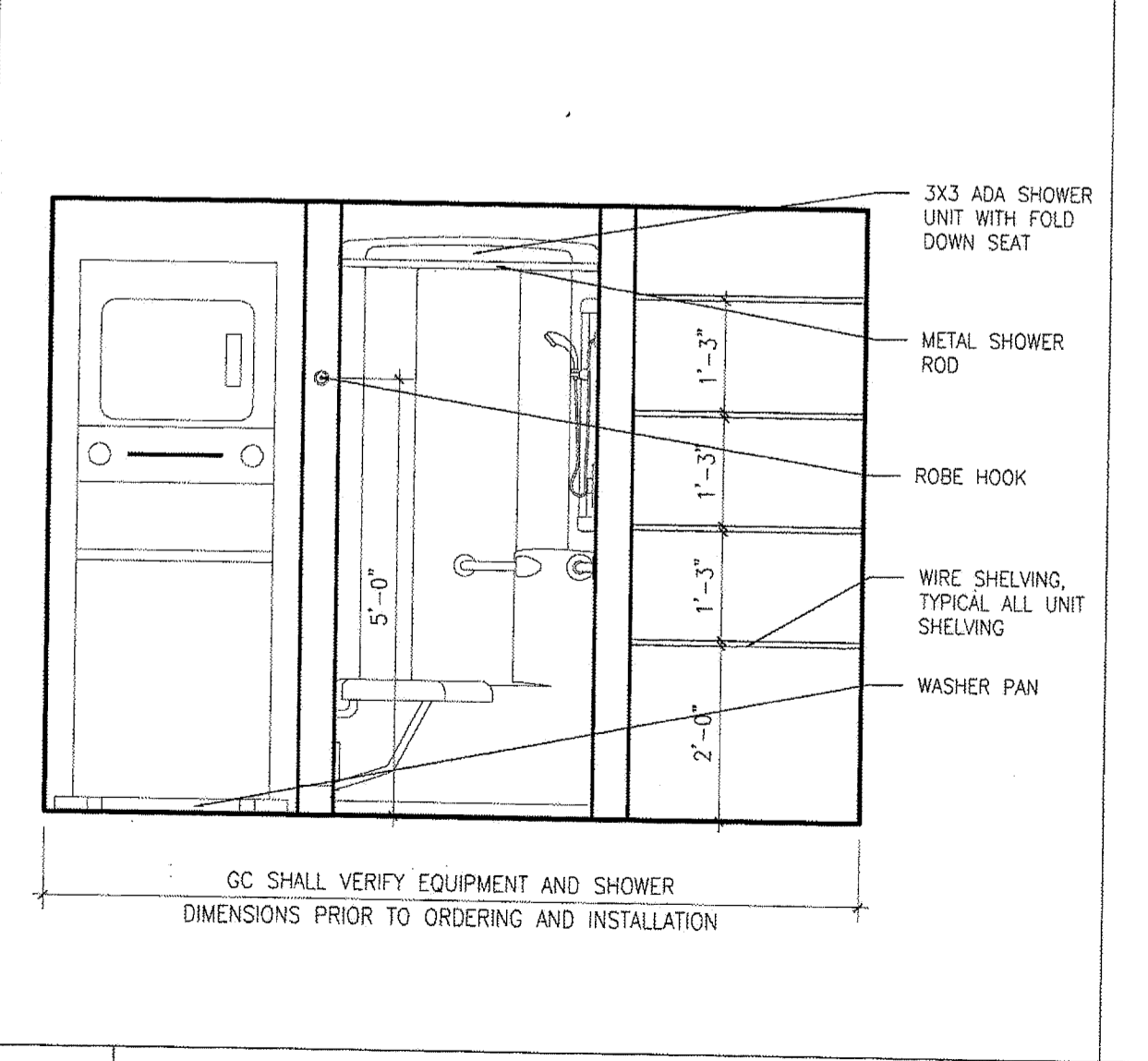
F4 BATHROOM ELEVATION
1/2"x1'-0" SINK AND TOILET ELEVATION-APT 403



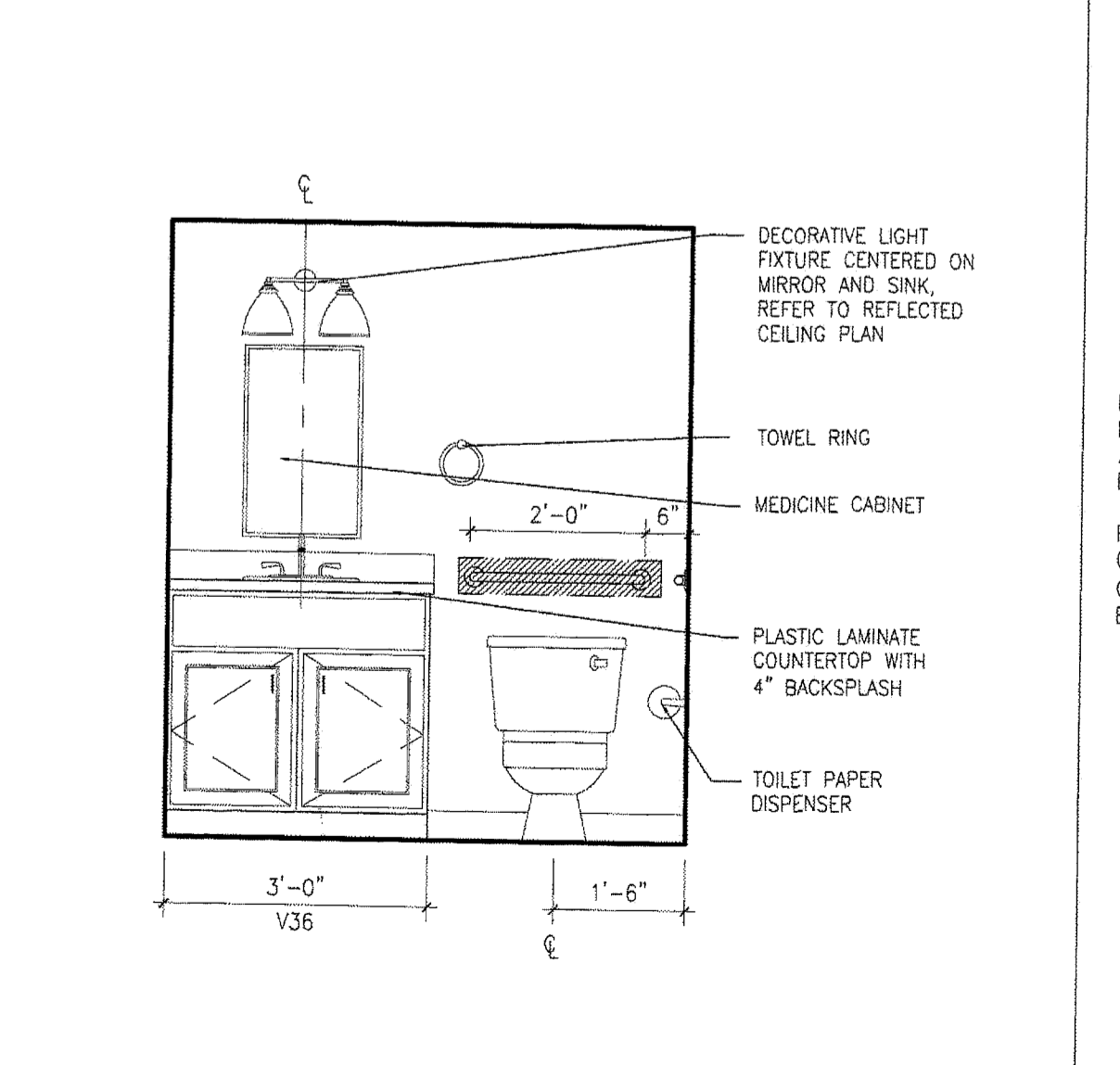
F9 KITCHEN ELEVATION
1/2"x1'-0" NORTH ELEVATION-APT 405, 406



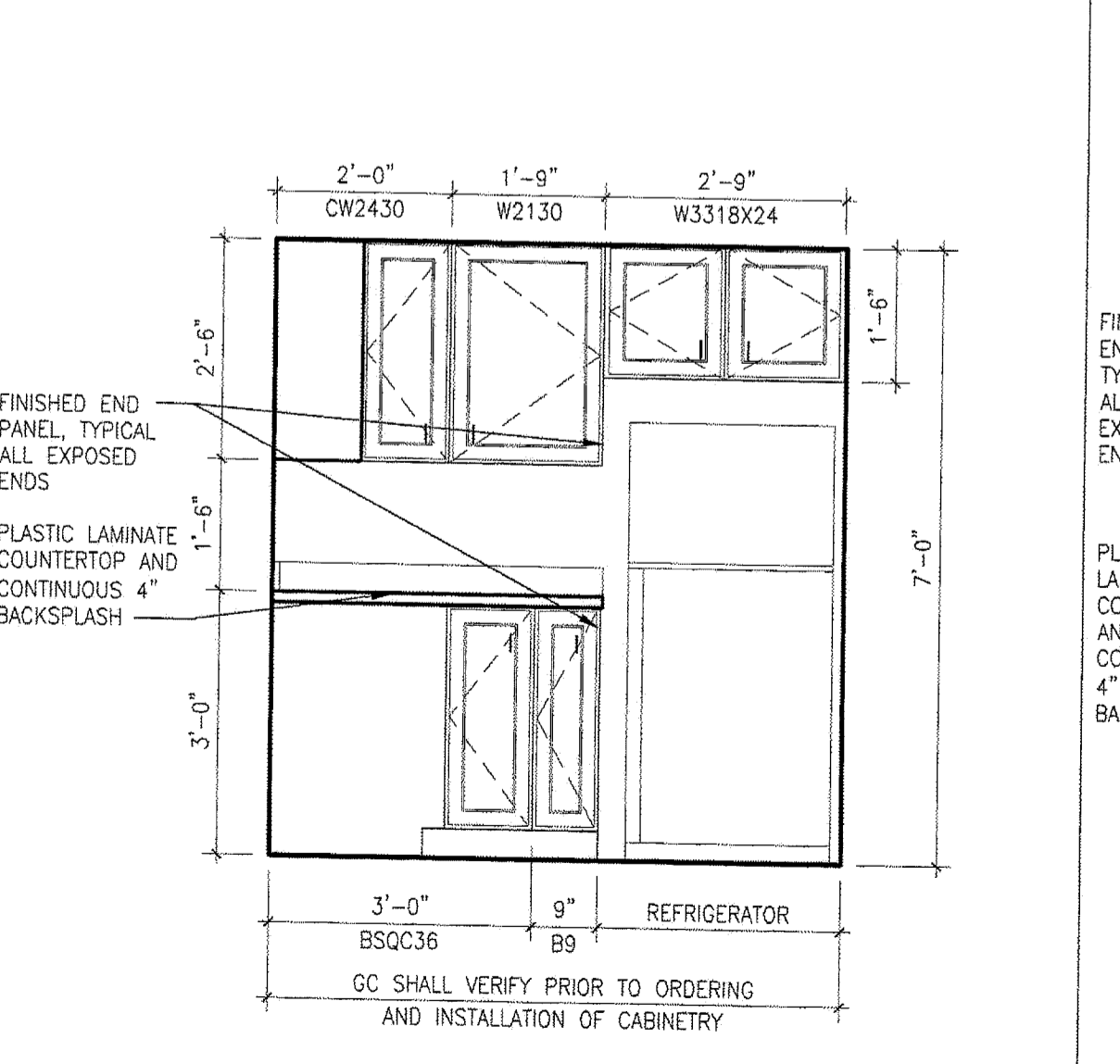
F13 KITCHEN ELEVATION
1/2"x1'-0" EAST ELEVATION-APT 405, 406



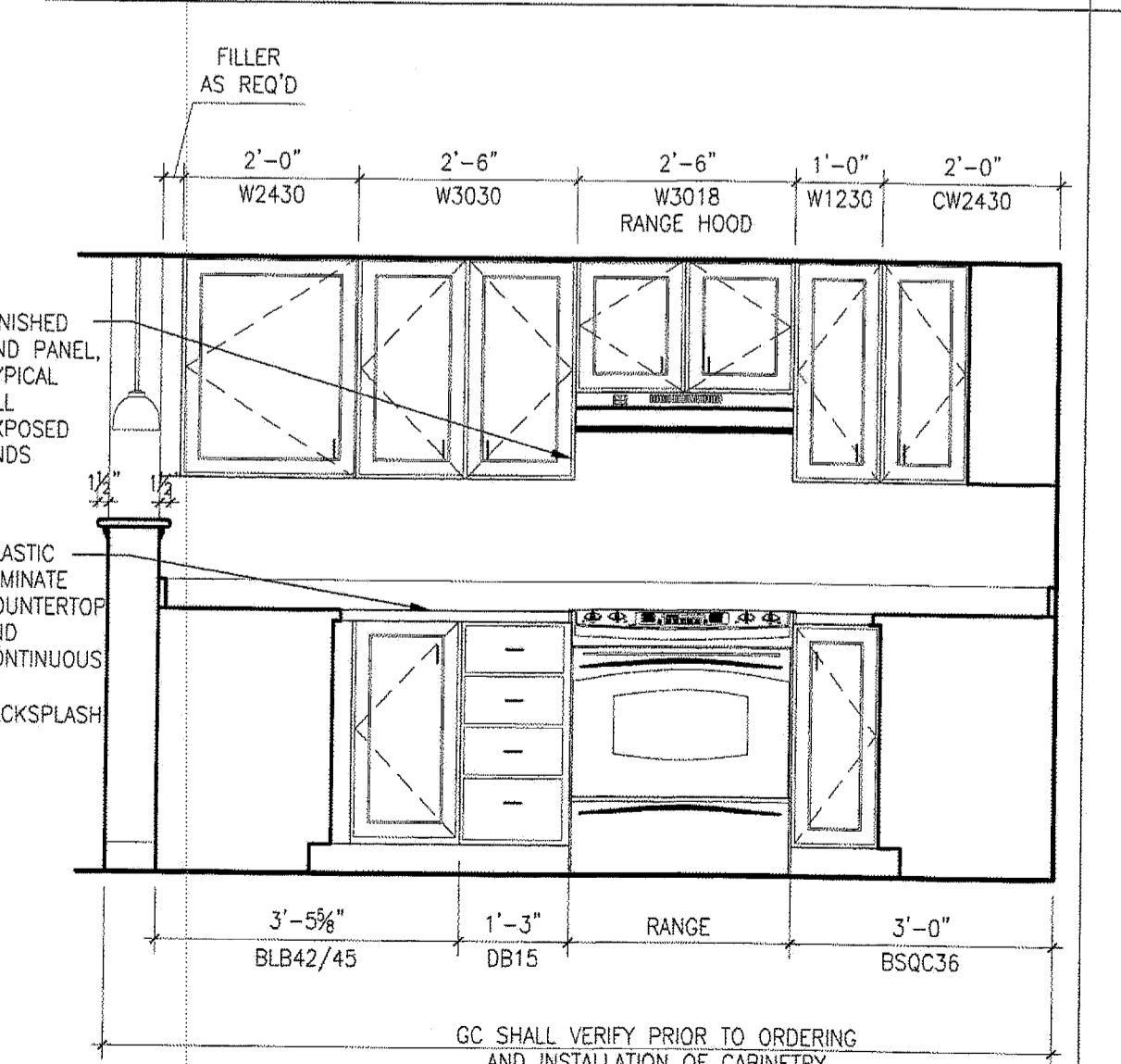
A1 TYPICAL BATHROOM ELEVATION
1/2"x1'-0" SHOWER, WASHER/DRYER AND SHELVING ELEVATION



A5 TYPICAL BATHROOM ELEVATION
1/2"x1'-0" SINK AND TOILET ELEVATION



A9 KITCHEN ELEVATION
1/2"x1'-0" WEST ELEVATION-APT 407

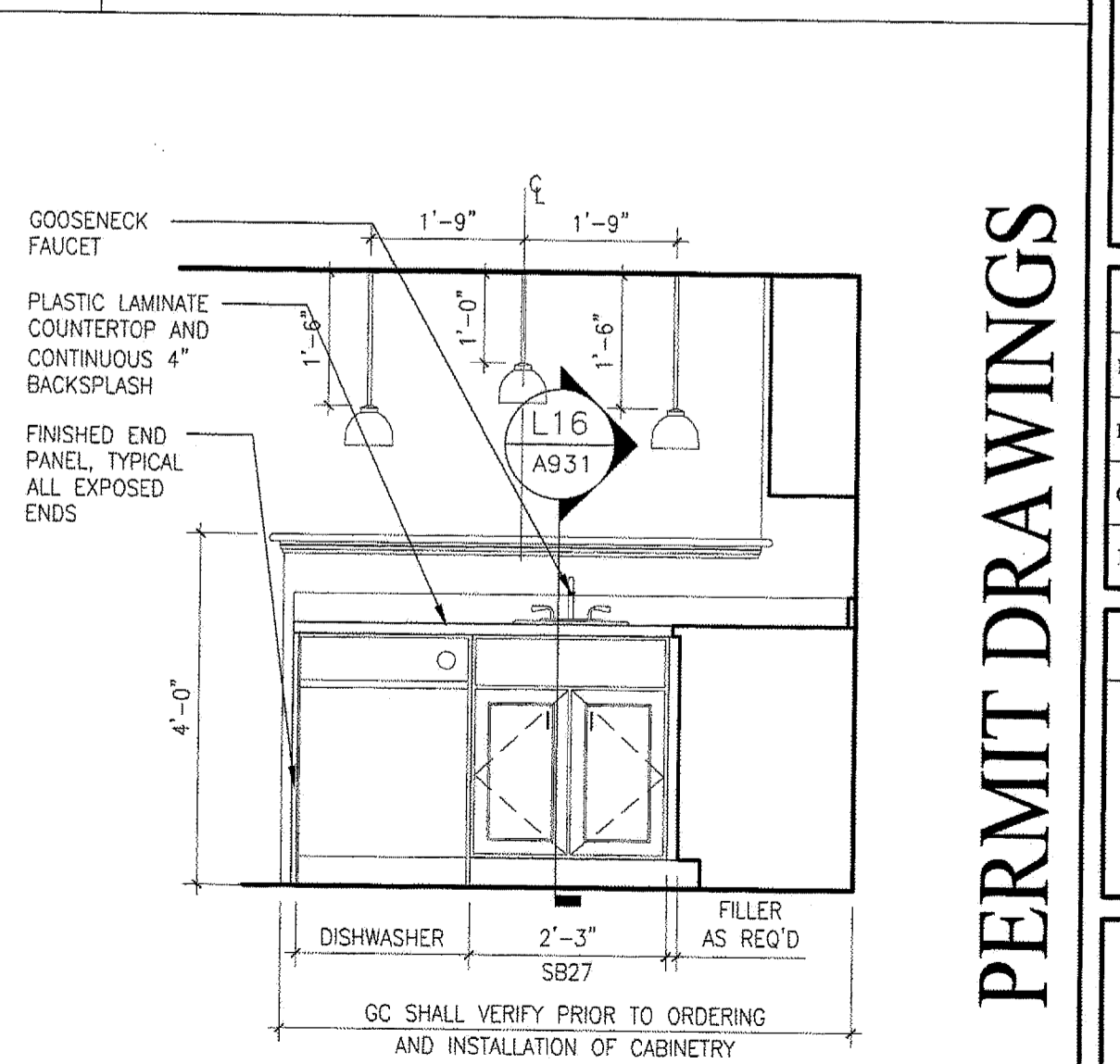


A13 KITCHEN ELEVATION
1/2"x1'-0" NORTH ELEVATION-APT 407

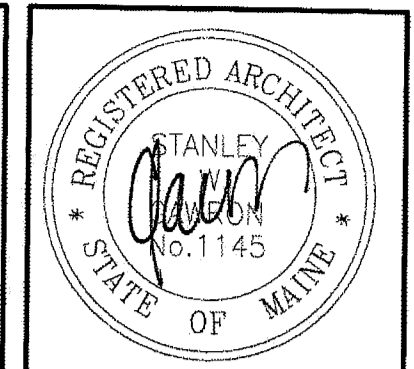
NOTES:

- KITCHEN CABINETS: ARMSTRONG WORLD INDUSTRIES, INC. PREMIER SERIES CASEWORK. DOOR STYLE: TOWN & COUNTRY. FINISH: CAPE. HARDWARE: ARMSTRONG, BP4467-GPT.
- VANITY CABINETS: ARMSTRONG WORLD INDUSTRIES, INC. PREMIER SERIES CASEWORK. DOOR STYLE: SUMMIT HILL. FINISH: WHITE. HARDWARE: ARMSTRONG, BP4467-GPT.
- TOILET ACCESSORIES: CREATIVE SPECIALTIES INTERNATIONAL. THE SAGE COLLECTION. FINISH: BRUSHED NICKEL. FINISH: 18" TOWEL BAR: DN6818. TOWEL RING: DN6888. PAPER HOLDER: DN6808. ROBE HOOK: DN6803.
- MEDICINE CABINET: RECESSED MIRRORLESS- AMERICAN PRIDE, HARMONY, FRAMELESS BEVEL, STEEL BODY, ST9926WBRI. SURFACE MOUNTED MIRROR APT 402- AMERICAN PRIDE, HARMONY, FRAMELESS BEVEL, STEEL BODY, ST9926WBRI, SURFACED. RECESSED MIRRORLESS MEDICINE CABINET- APT 403: ARMSTRONG WORLD INDUSTRIES, INC. DOOR STYLE: SUMMIT HILL. FINISH: WHITE. HARDWARE: ARMSTRONG, BP4467-GPT.
- WASHER/DRYER UNIT DIMENSIONS BASED ON GE UNITIZED SPACEMAKER WASHER AND DRYER. GC SHALL VERIFY AND COORDINATE ALL DIMENSIONS WITH OWNER SUPPLIED UNIT.
- APPLIANCES PROVIDED BY OWNER. GC SHALL VERIFY AND COORDINATE DIMENSIONS PRIOR TO ORDERING AND INSTALLATION OF CABINETS.
- WALL SAFES SHALL BE PROVIDED BY OWNER AND INSTALLED BY GC. GC SHALL VERIFY AND COORDINATE ALL DIMENSIONS PRIOR TO INSTALLATION- REFER TO FLOOR PLAN FOR LOCATIONS.
- SHELVING/ ROD AND SHELF SYSTEM: CLOSETMAD, A DIVISION OF CLAIRSON INTERNATIONAL OR SCHULTE. UNIT CLOSETS: 12 INCH DEEP. SHELVING: 15 INCH DEEP, 4 SHELVES HIGH. PROVIDE VINYL COATED, ADJUSTABLE WIRE SHELVING SYSTEM; SHELF WITH MATCHING MOUNTING HARDWARE FOR ATTACHMENT TO CONCEALED WOOD BLOCKING. GC SHALL COORDINATE MOUNTING HEIGHT WITH OWNER.
- GRAB BARS: FRANKLIN BRASS; SAFETY FIRST. CUSTOM COLOR SERIES. COLOR: WHITE. BARS SHALL BE THERMOPLASTIC OR RESIN-COATED STEEL, 1 1/2" DIAMETER, .064" MINIMUM WALL THICKNESS WITH 1/4" THICK FLANGES; CONCEAL FASTENER MOUNTING. LENGTHS AND CONFIGURATION SHALL BE INDICATED ON THE DRAWINGS. GRAB BARS SHALL BE SCREWED TO SOLID BLOCKING IN STUD PARTITIONS. INSTALL GRAB BARS TO WITHSTAND A DOWNWARD LOAD OF AT LEAST 250 LBF, WHEN TESTED ACCORDING TO METHOD IN ASTM F 446.
- CORNER GUARDS: INPRO CORPORATION, SURFACE MOUNT CORNER GUARDS, 2" WING, G160, CONTRACTOR SHALL PROVIDE COLOR SAMPLES FOR ARCHITECTS SELECTION. QUANTITY: 25.
- SIGNAGE: NEW ROOM AND DIRECTORY SIGNAGE SHALL MATCH EXISTING SIGNAGE. WELCH ARCHITECTURAL SIGNAGE. INTERIOR PLATE SIGNS MESSAGE INSERT SIGNS: SUBSTRATE: FABRICATE SIGNS FROM 1/4" THICK MATTE CLEAR ACRYLIC WITH 1/2" BEVELED BACKER PLATE. ASSEMBLY: SANDWICH TWO EXACT SIZED ACRYLIC PIECES WITH FOAM TAPE AS DIVIDERS. FACE PLATE TO HAVE CLEAR WINDOWS FOR MESSAGE INSERTS. BACKER COLOR: WHITE. VINYL COLOR: BURGANDY LOGO. EDGES: BEVELED. CORNERS: SQUARE. SIZE: AS INDICATED. COPY STYLE: HELVETICA. COPY COLOR: BURGANDY. LETTERFORM: APPLY 1/8" COMPUTER PRECISION CUT TACTILE COPY. ALL UPPERCASE, NORMAL SPACING, 1/8" MINIMUM LETTER HEIGHT. TACTILE LETTERS WILL BE APPLIED IN A MANNER THAT AVOIDS SCORING OF THE SIGN'S SURFACE AT BASE OF TACTILE LETTERS. BRAILLE: GRADE II RASTER.
- DIRECTORIES: SHALL MATCH INTERIOR PLATE SIGNS.
- WATER WALL: H2O WALLS, INC. 2912 N. MALMO DRIVE, ARLINGTON HEIGHTS, ILLINOIS, 60005, 877-420-9255, SALES@H2OWALLSINC.COM. INSTALL PER MANUFACTURERS RECOMMENDATIONS FOR CUSTOMER DESIGNED WATER FEATURE.

F17 TYPICAL NOTES
NTS



A17 KITCHEN ELEVATION
1/2"x1'-0" EAST ELEVATION-APT 407



GAWRON TURGEON ARCHITECTS
29 Black Point Road
Scarborough, ME 04074
www.gawronturgen.com
Tel: 207.883.6397
Fax: 207.883.0361

SEVENTY-FIVE STATES STREET
SOUTH HARBORSIDE FOURTH FLOOR RENOVATIONS
PORTLAND MAINE

REVISIONS		
#	DATE	DESCRIPTION

DATE:	9/5/07
PROJECT #	010106
DRAWN BY:	RLA
CHECKED BY:	MET
DRAWING SCALE	AS NOTED

SHEET TITLE
INTERIOR ELEVATIONS

A921

© COPYRIGHT 1985-2003
REPRODUCTION OR RESALE OF
THIS DOCUMENT WITHOUT
WRITTEN PERMISSION OF
GAWRON ARCHITECTS IS PROHIBITED

PERMIT DRAWINGS