

**Gawron Turgeon ARCHITECTS**  
 29 Black Point Road  
 Scarborough, Maine 04074  
 www.gawronturgeon.com  
 207-883-4307 ext 207-883-0361 fax

SEVENTY-FIVE STATE STREET  
 SOUTH HARBORSIDE THIRD FLOOR RENOVATIONS  
 PORTLAND MAINE

REVISIONS		
#	DATE	DESCRIPTION
1	07-15-08	PRICING SET

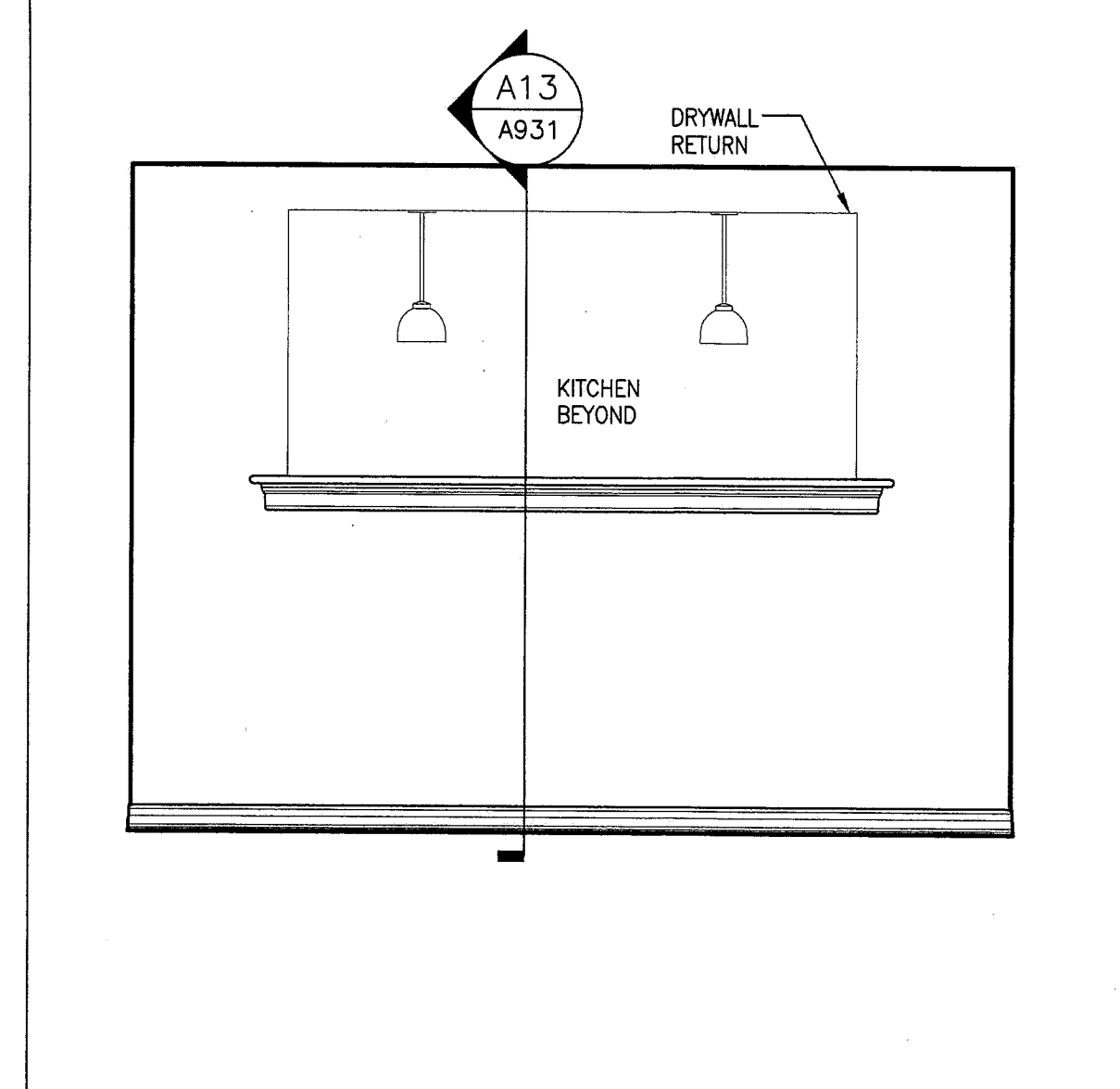
DATE:	08.05.08
PROJECT #:	020108
DRAWN BY:	RLA
CHECKED BY:	MET
DRAWING SCALE:	AS NOTED

SHEET TITLE  
 INTERIOR ELEVATIONS

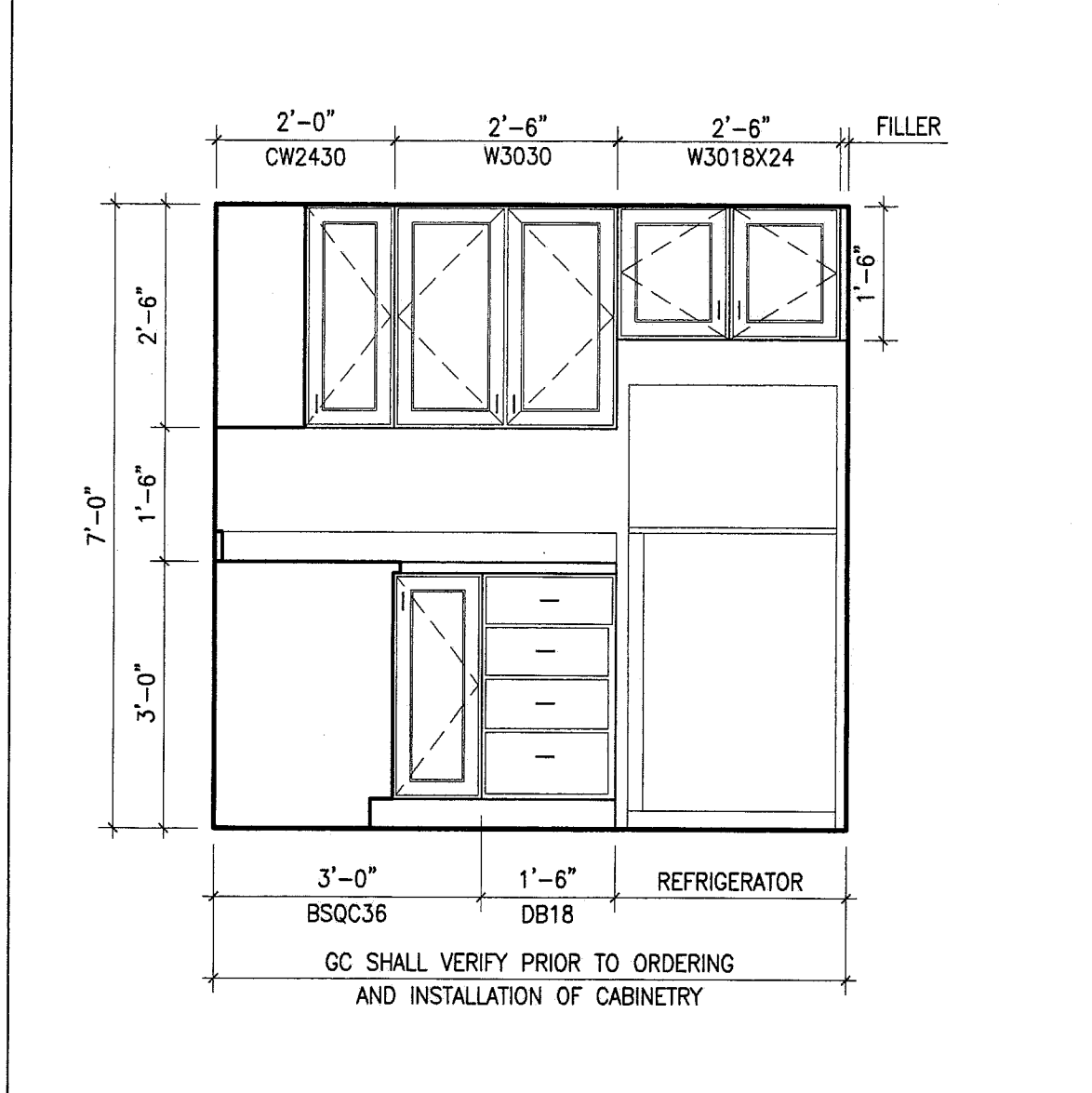
A921

© COPYRIGHT 1985-2008  
 REPRODUCTION OR RELEASE OF THIS  
 DOCUMENT WITHOUT WRITTEN  
 PERMISSION OF GAWRON TURGEON  
 ARCHITECTS IS PROHIBITED

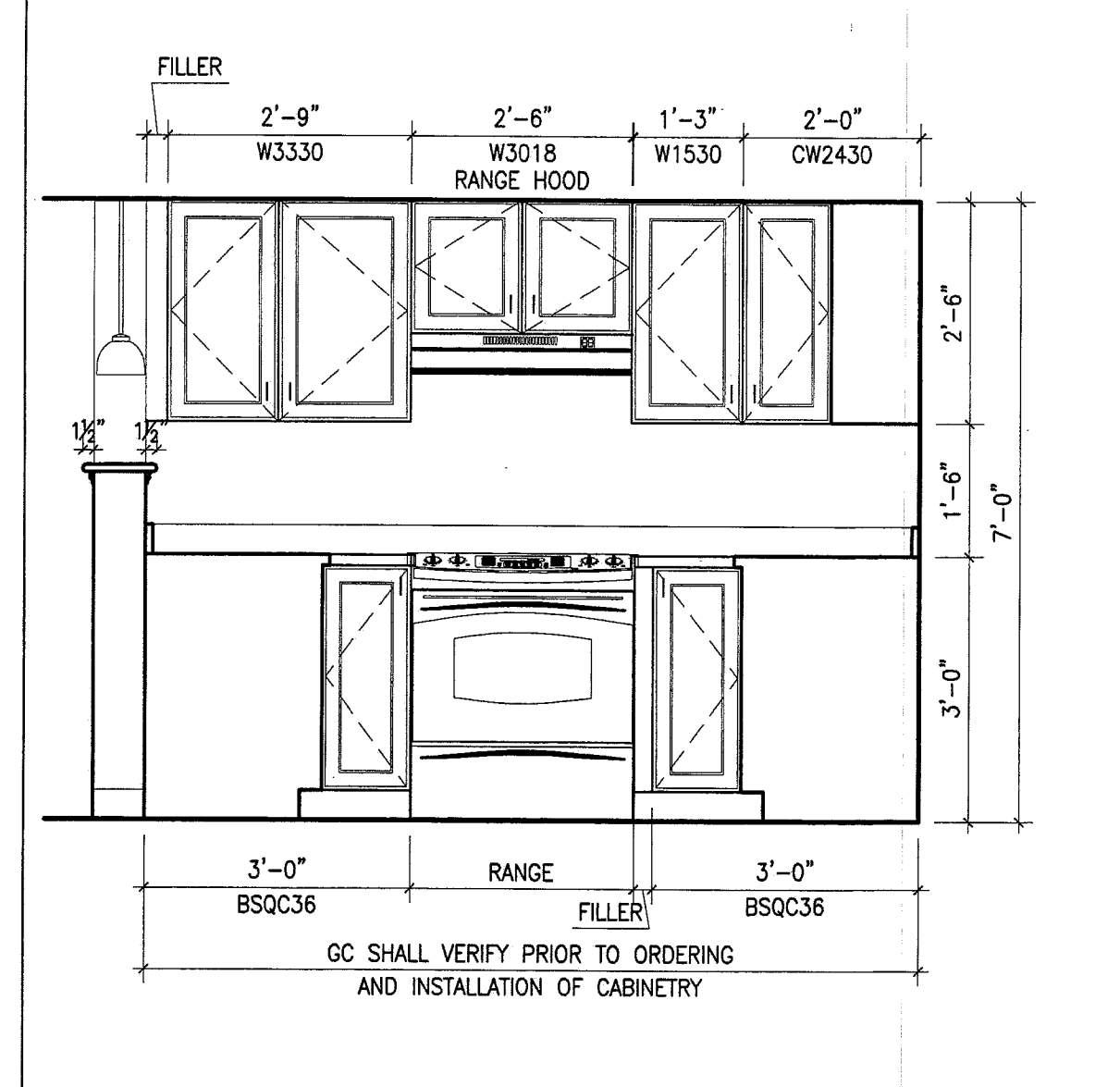
- NOTES:**
- APARTMENT KITCHEN AND VANITY CABINERY:  
 ARMSTRONG WORLD INDUSTRIES, INC  
 PREMIER SERIES CASEWORK  
 DOOR STYLE: SIENA  
 FINISH: TOFFEE  
 HARDWARE: BP4428-WI
  - GAME ROOM CABINERY:  
 ARMSTRONG WORLD INDUSTRIES, INC  
 PREMIER SERIES CASEWORK  
 DOOR STYLE: SIENA  
 FINISH: CAPE  
 HARDWARE: KNOXANDHARDWARE.COM, EMENEE, MK1207, FULL HOUSE PULL (PART# 1253912) FINISH:  
 ANTIQUE MATTE SILVER
  - ADA UNIT 307- PROVIDE ARMSTRONG UNIVERSAL ACCESS BASE CABINETS FOR THE KITCHEN AND VANITY CABINERY:  
 81/2" RAISED TOE SPACE  
 321/2" HEIGHT CABINET
  - UPGRADE: PROVIDE DOVETAIL DRAWERS WITH FULL EXTENSION DRAWER GLIDES AND WOOD END PANELS
  - TOILET ACCESSORIES:  
 CREATIVE SPECIALTIES INTERNATIONAL  
 THE SAGE COLLECTION  
 FINISH: BRUSHED NICKEL FINISH  
 18" TOWEL BAR: DN6818  
 TOWEL RING: DN6866  
 PAPER HOLDER: DN6808  
 ROBE HOOK: DN6803
  - MEDICINE CABINET:  
 RECESSED MIRROR- AMERICAN PRIDE, HARMONY, FRAMELESS BEVEL, STEEL BODY, ST9926WB1  
 SURFACE MOUNTED MIRROR APT 302- AMERICAN PRIDE, HARMONY, FRAMELESS BEVEL, STEEL BODY, ST9926WB1, SURFACED.  
 RECESSED MIRRORLESS MEDICINE CABINET- APT 303:  
 ARMSTRONG WORLD INDUSTRIES, INC  
 DOOR STYLE: SIENA  
 FINISH: TOFFEE  
 HARDWARE: ARMSTRONG, BP4428-WI
  - WASHER/DRYER UNIT DIMENSIONS BASED ON GE UTILIZED SPACEMAKER WASHER AND DRYER. GC SHALL VERIFY AND COORDINATE ALL DIMENSIONS PRIOR TO INSTALLATION- REFER TO FLOOR PLAN FOR LOCATIONS.
  - APPLIANCES PROVIDED BY OWNER. GC SHALL VERIFY AND COORDINATE DIMENSIONS PRIOR TO ORDERING AND INSTALLATION OF CABINERY.
  - WALL SAFES SHALL BE PROVIDED BY OWNER AND INSTALLED BY GC. GC SHALL VERIFY AND COORDINATE ALL DIMENSIONS PRIOR TO INSTALLATION- REFER TO FLOOR PLAN FOR LOCATIONS.
  - SHELVING/ ROD AND SHELF SYSTEM:  
 CLOSETMAID, A DIVISION OF CLAIRSON INTERNATIONAL OR SCHULTE  
 UNIT CLOSETS: 12 INCH DEEP  
 SHELVING: 15 INCH DEEP, 4 SHELVES HIGH  
 PROVIDE VINYL COATED, ADJUSTABLE WIRE SHELVING SYSTEM; SHELF WITH MATCHING MOUNTING HARDWARE FOR ATTACHMENT TO CONCEALED WOOD BLOCKING. GC SHALL COORDINATE MOUNTING HEIGHT WITH OWNER.
  - GRAB BARS:  
 FRANKLIN BRASS, SAFETY FIRST  
 CUSTOM COLOR SERIES  
 COLOR: WHITE  
 BARS SHALL BE THERMOPLASTIC OR RESIN-COATED STEEL, 1 1/2" DIAMETER, .064" MINIMUM WALL THICKNESS WITH 8" THICK FLANGES; CONCEAL FASTENER MOUNTING. LENGTHS AND CONFIGURATION SHALL BE INDICATED ON THE DRAWINGS.  
 GRAB BARS SHALL BE SCREWED TO SOLID BLOCKING IN STUD PARTITIONS. INSTALL GRAB BARS TO WITHSTAND A DOWNWARD LOAD OF AT LEAST 250 LBS, WHEN TESTED ACCORDING TO METHOD IN ASTM F 445.
  - CORNER GUARDS:  
 INPRO CORPORATION, SURFACE MOUNT CORNER GUARDS, 2" WING, G160, CONTRACTOR SHALL PROVIDE COLOR SAMPLES FOR ARCHITECTS SELECTION  
 QUANTITY: 25
  - SIGNAGE:  
 NEW ROOM AND DIRECTORY SIGNAGE SHALL MATCH EXISTING SIGNAGE. WELCH ARCHITECTURAL SIGNAGE.  
 INTERIOR PLATE SIGNS MESSAGE INSERT SIGNS:  
 SUBSTRATE: FABRICATE SIGNS FROM 1/2" THICK MATTE CLEAR ACRYLIC WITH 1/4" BEVELED BACKER PLATE.  
 ASSEMBLY: SANDWICH TWO EXACT SIZED ACRYLIC PIECES WITH FOAM TAPE AS DIVIDERS. FACE PLATE TO HAVE CLEAR WINDOWS FOR MESSAGE INSERTS.  
 BACKER COLOR: WHITE  
 VINYL COLOR: BURGUNDY LOGO  
 EDGES: BEVELED  
 CORNERS: SQUARE  
 SIZE: AS INDICATED  
 COPY STYLE: HELVETICA  
 COPY COLOR: BURGUNDY  
 LETTERFORM: APPLY 1/8" COMPUTER PRECISION CUT TACTILE COPY. ALL UPPERCASE, NORMAL SPACING, 1/8" MINIMUM LETTER HEIGHT. TACTILE LETTERS WILL BE APPLIED IN A MANNER THAT AVOIDS SCORING OF THE SIGN'S SURFACE AT BASE OF TACTILE LETTERS.  
 BRAILLE: GRADE II RASTER
  - DIRECTORIES:  
 SHALL MATCH INTERIOR PLATE SIGNS



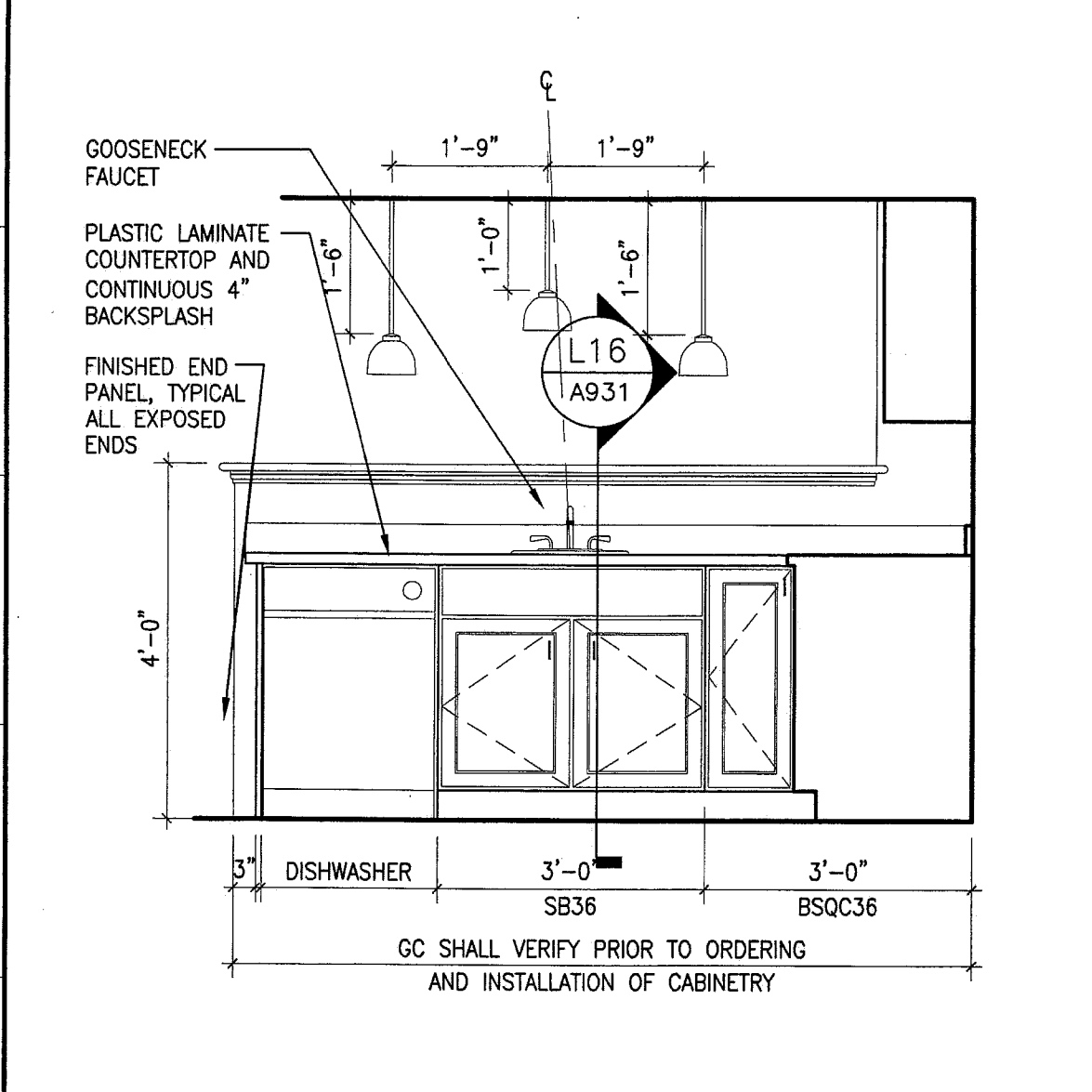
M13 LIVING ROOM ELEVATION  
 1/2"=1'-0" NORTH ELEVATION- APT 302



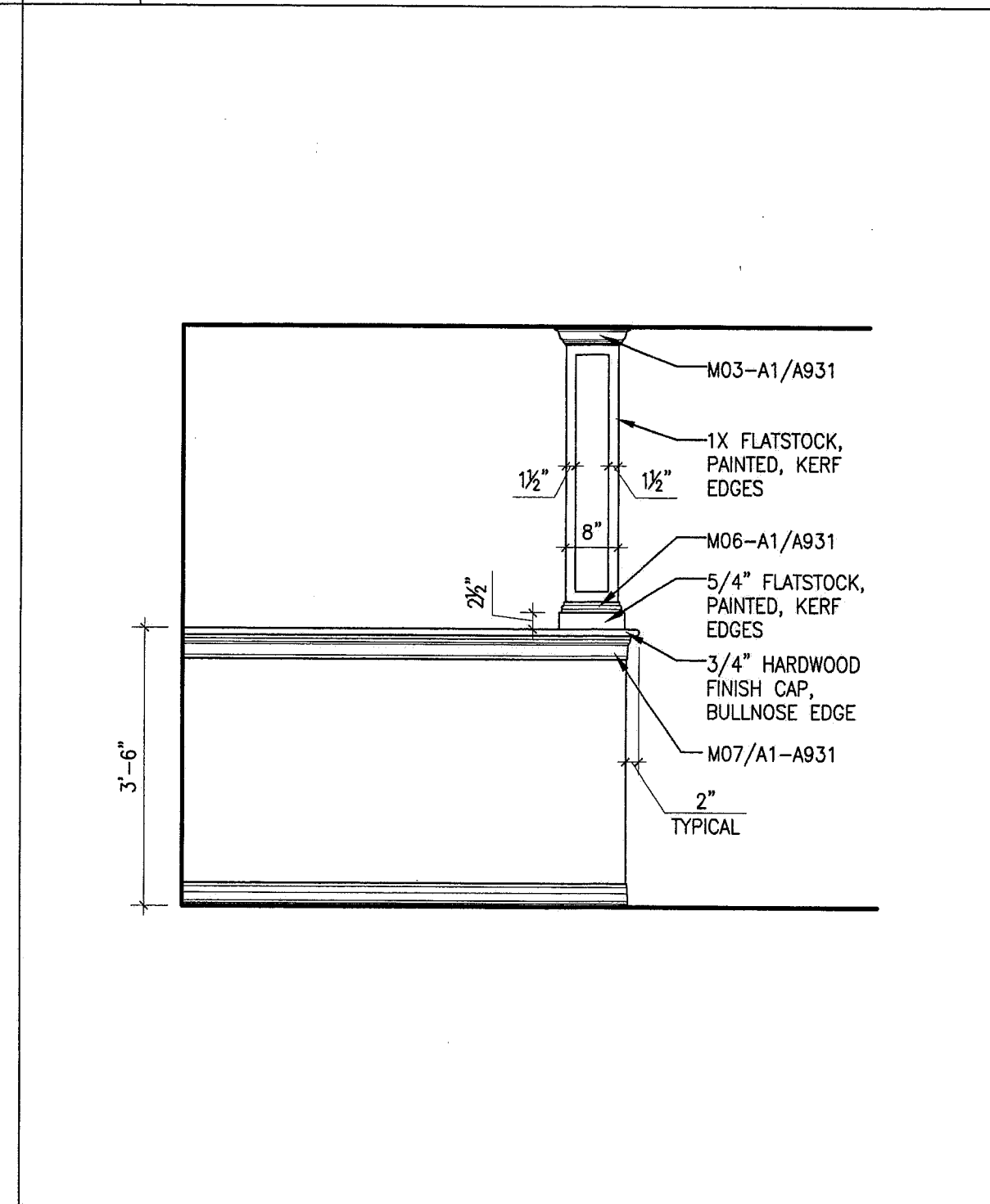
M9 KITCHEN ELEVATION  
 1/2"=1'-0" NORTH ELEVATION- APT 301



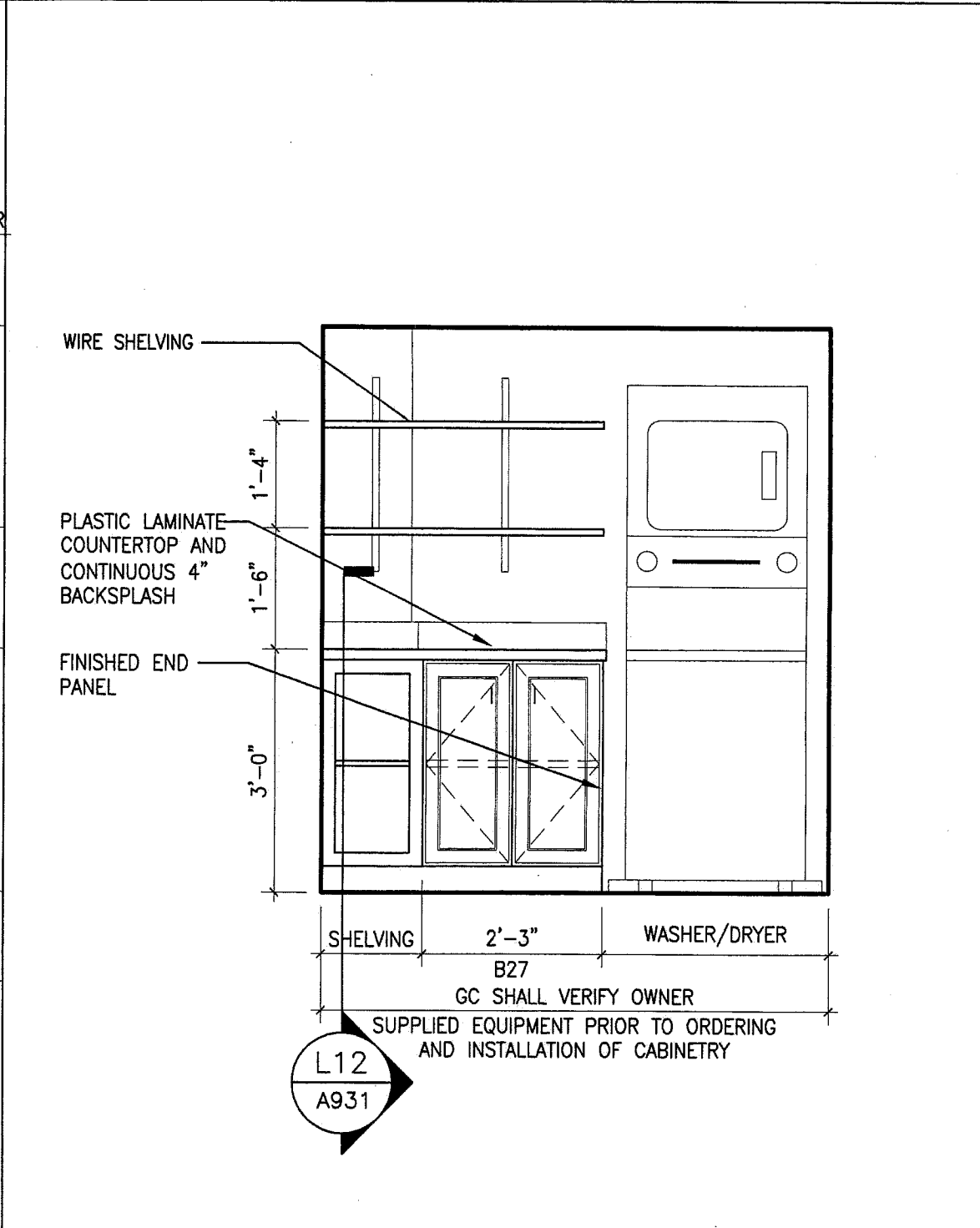
M5 KITCHEN ELEVATION  
 1/2"=1'-0" WEST ELEVATION- APT 301



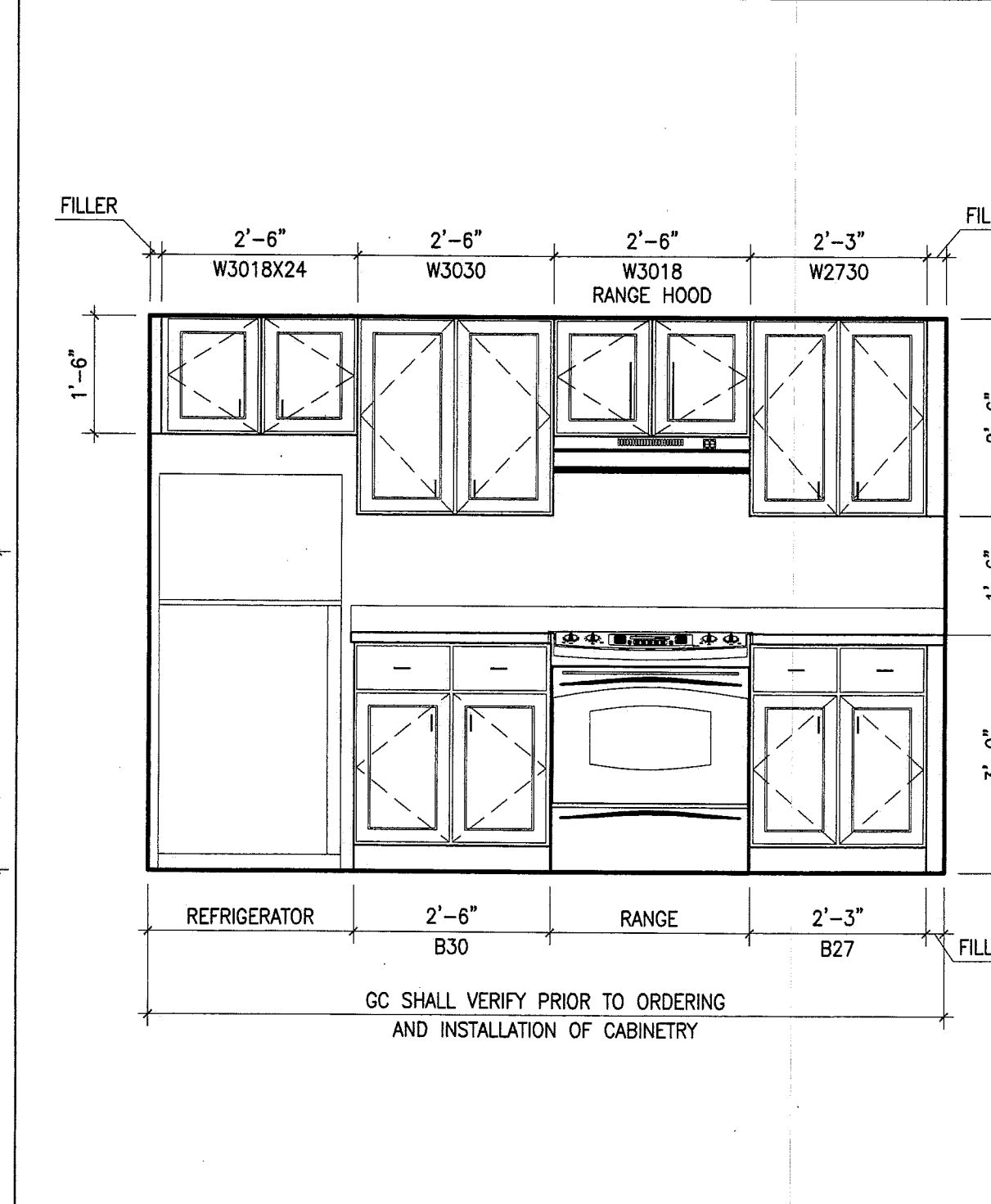
M1 KITCHEN ELEVATION  
 1/2"=1'-0" SOUTH ELEVATION- APT 301



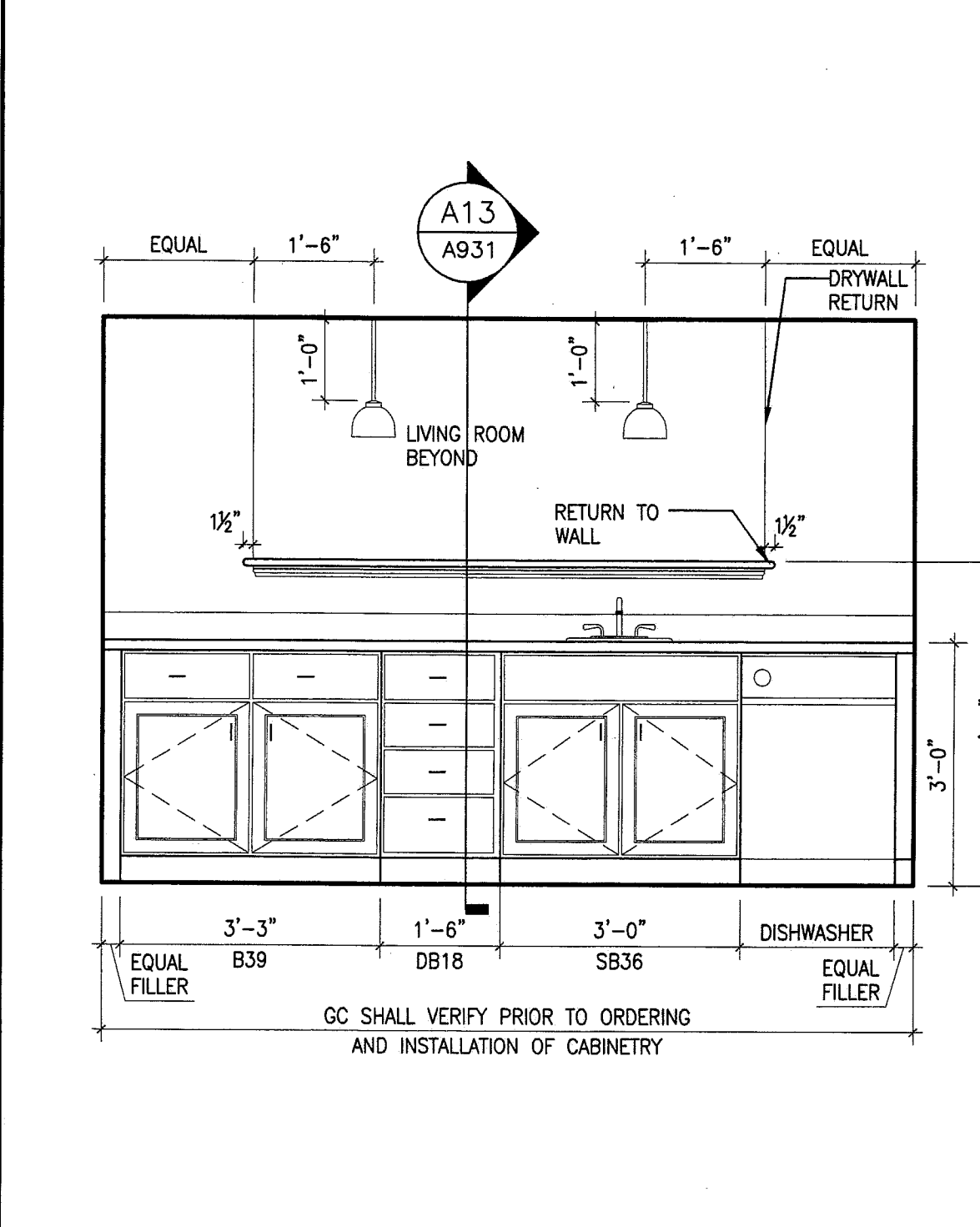
F13 LIVING ROOM ELEVATION  
 1/2"=1'-0" NORTH ELEVATION- APT 303



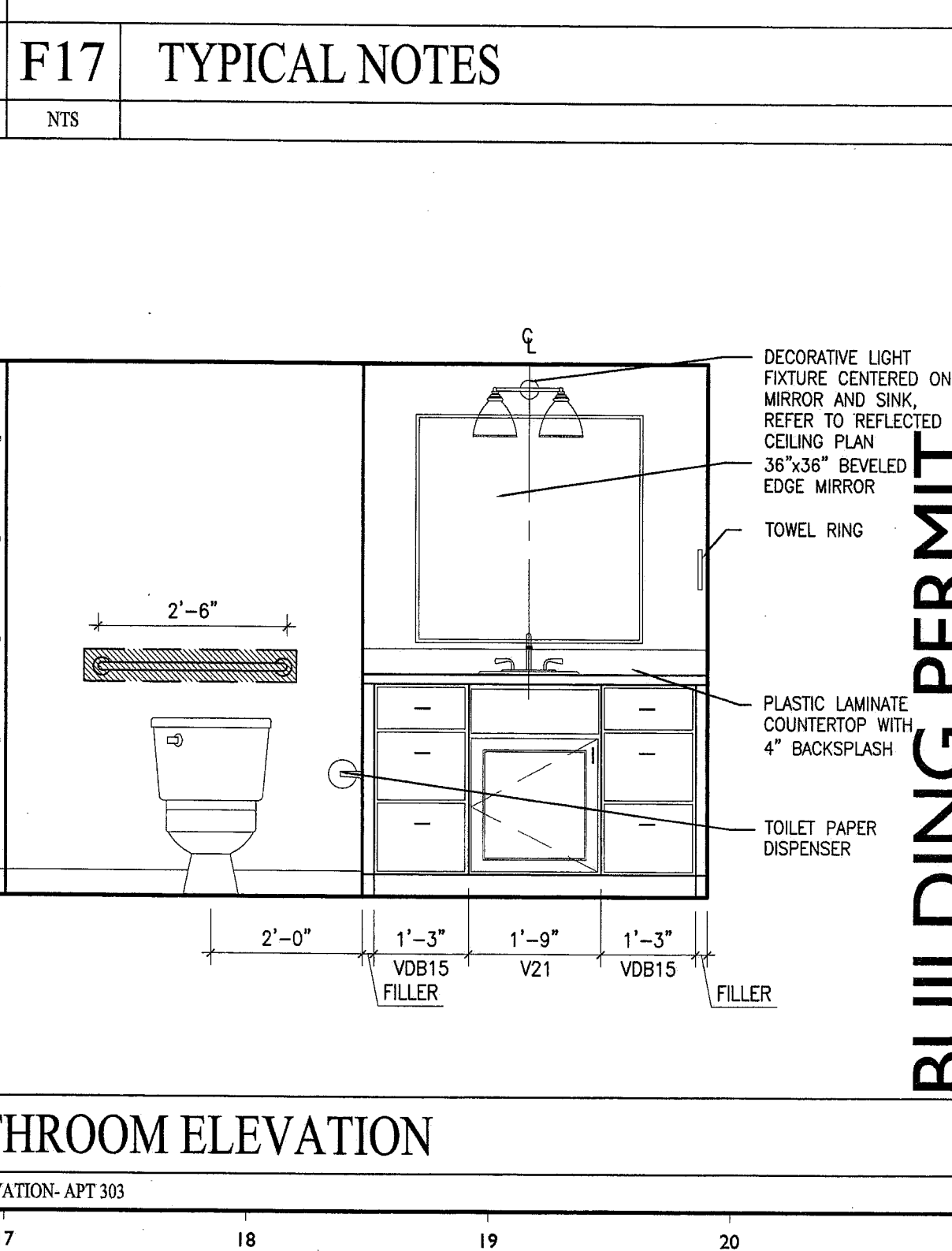
F9 LAUNDRY CLOSET  
 1/2"=1'-0" WASHER/ DRYER AND FOLDING COUNTER- APT 303



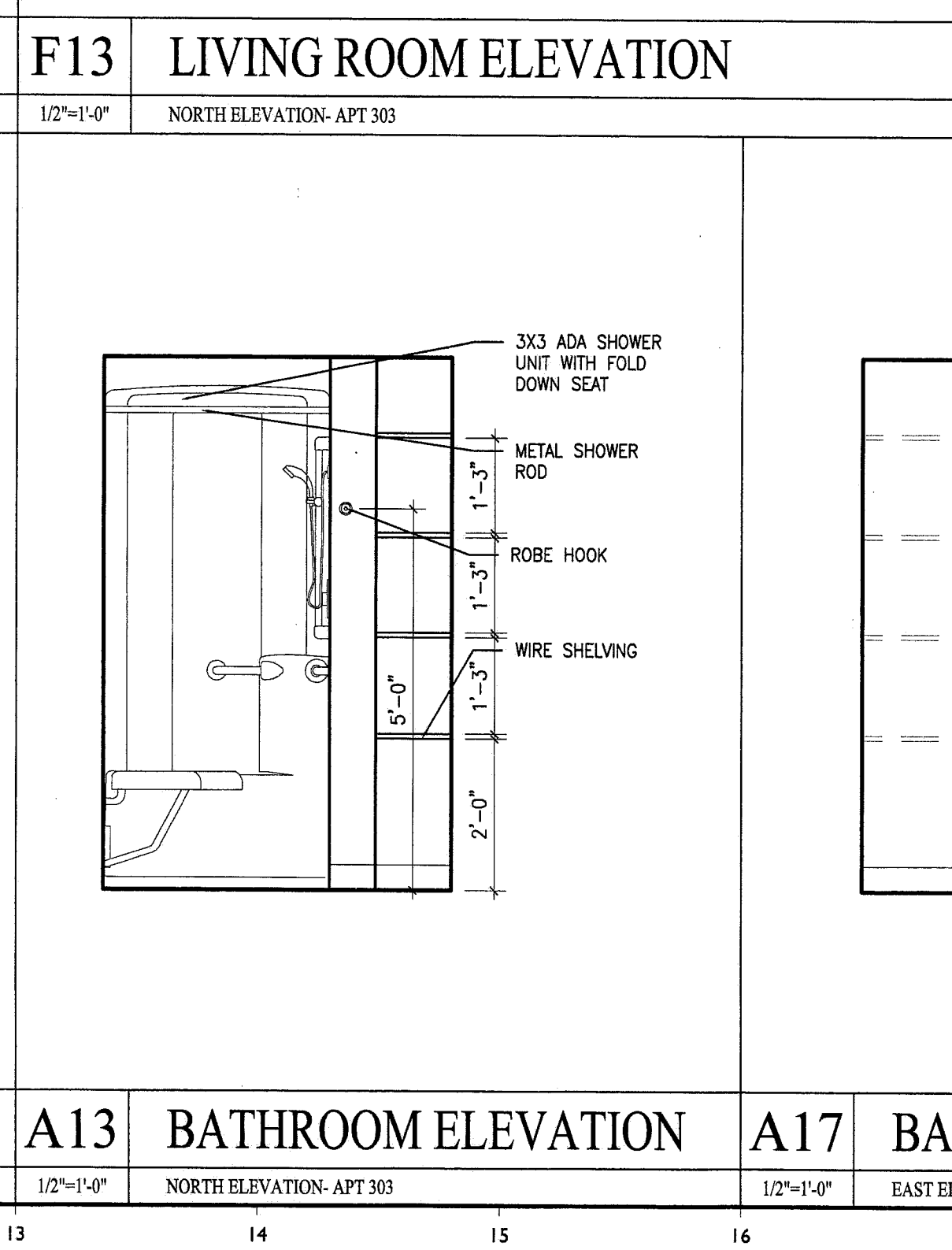
F4 KITCHEN ELEVATION  
 1/2"=1'-0" NORTH ELEVATION- APT 302



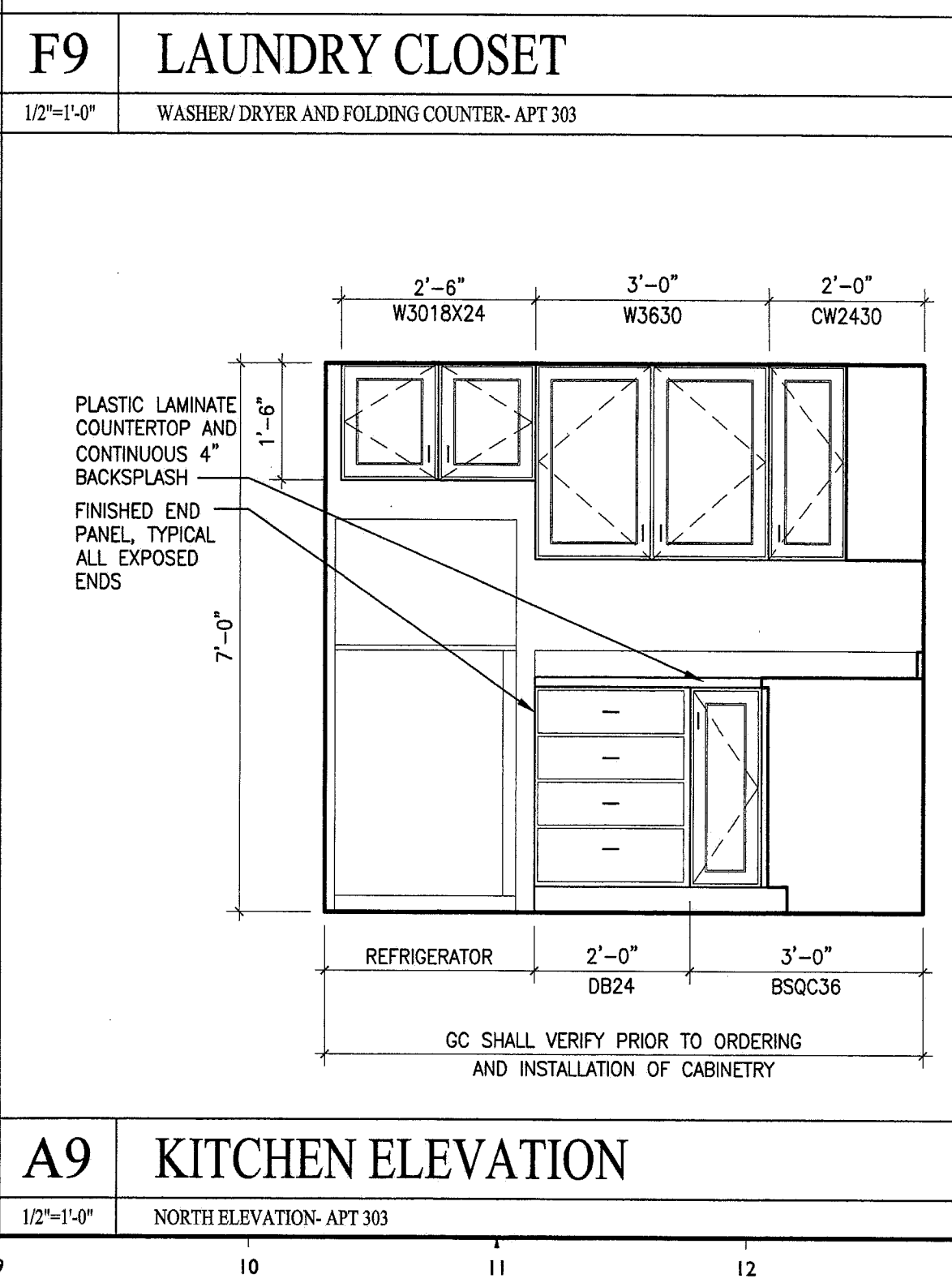
F1 KITCHEN ELEVATION  
 1/2"=1'-0" SOUTH ELEVATION- APT 302



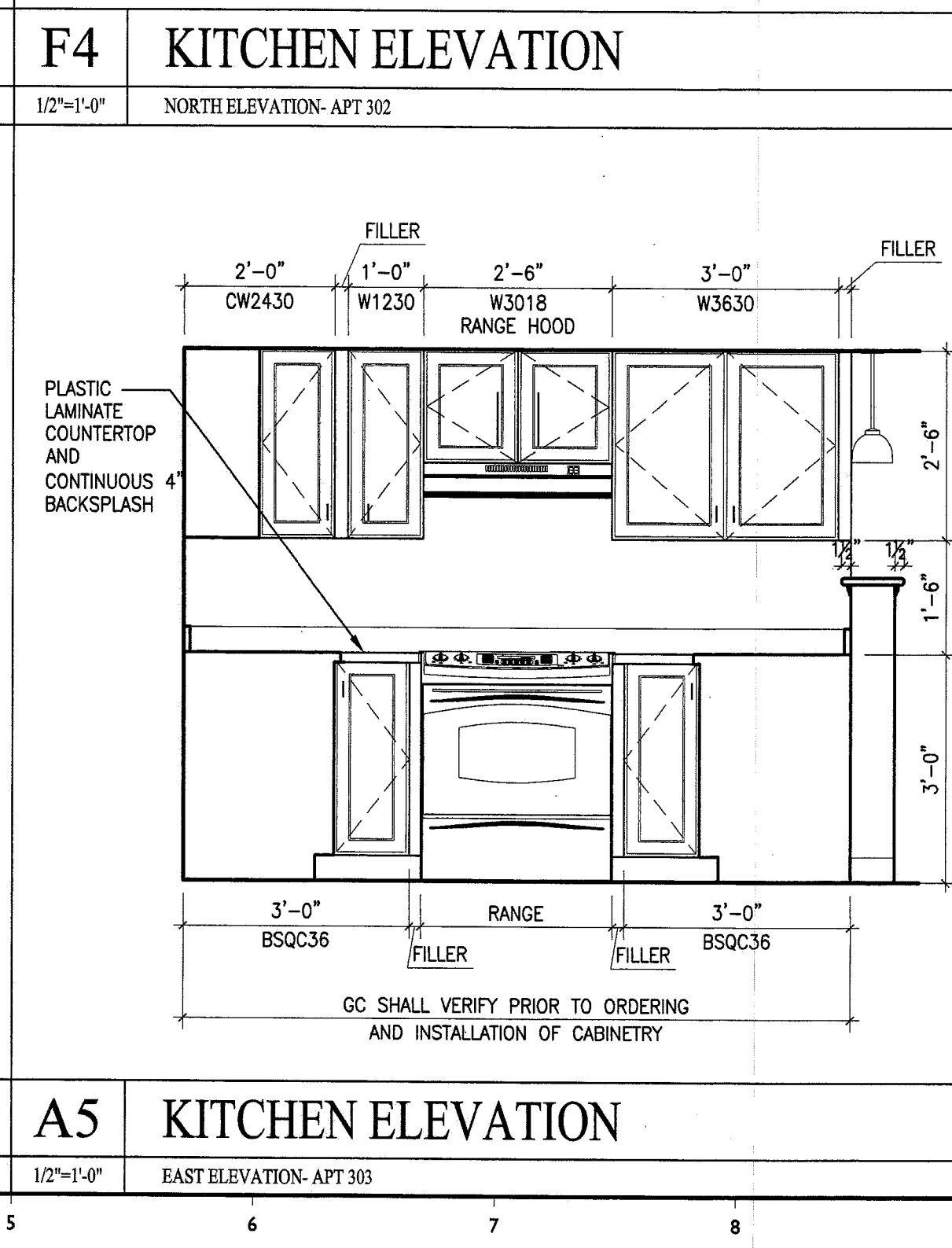
A17 BATHROOM ELEVATION  
 1/2"=1'-0" EAST ELEVATION- APT 303



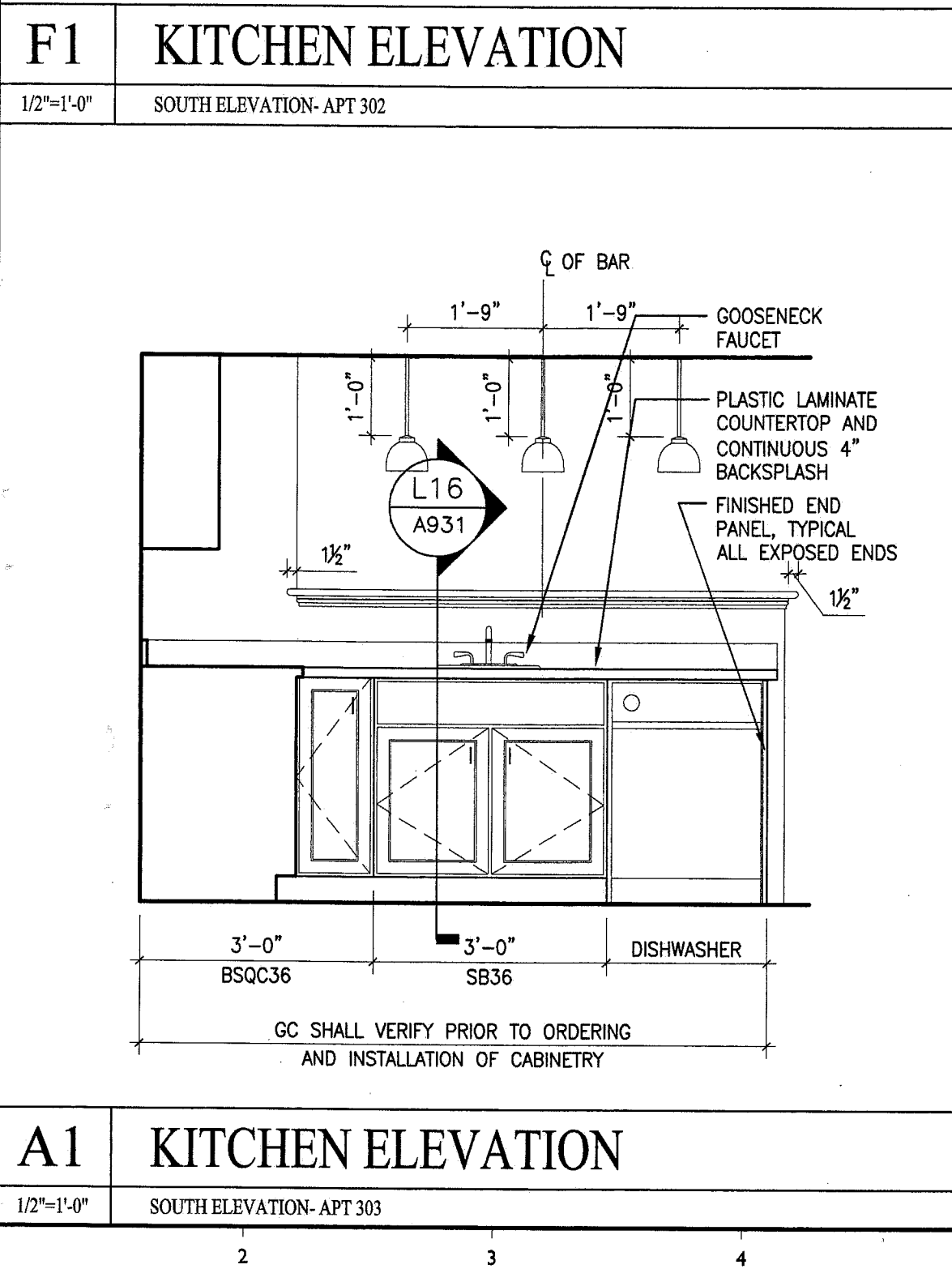
A13 BATHROOM ELEVATION  
 1/2"=1'-0" NORTH ELEVATION- APT 303



A9 KITCHEN ELEVATION  
 1/2"=1'-0" NORTH ELEVATION- APT 303



A5 KITCHEN ELEVATION  
 1/2"=1'-0" EAST ELEVATION- APT 303



A1 KITCHEN ELEVATION  
 1/2"=1'-0" SOUTH ELEVATION- APT 303

BUILDING PERMIT