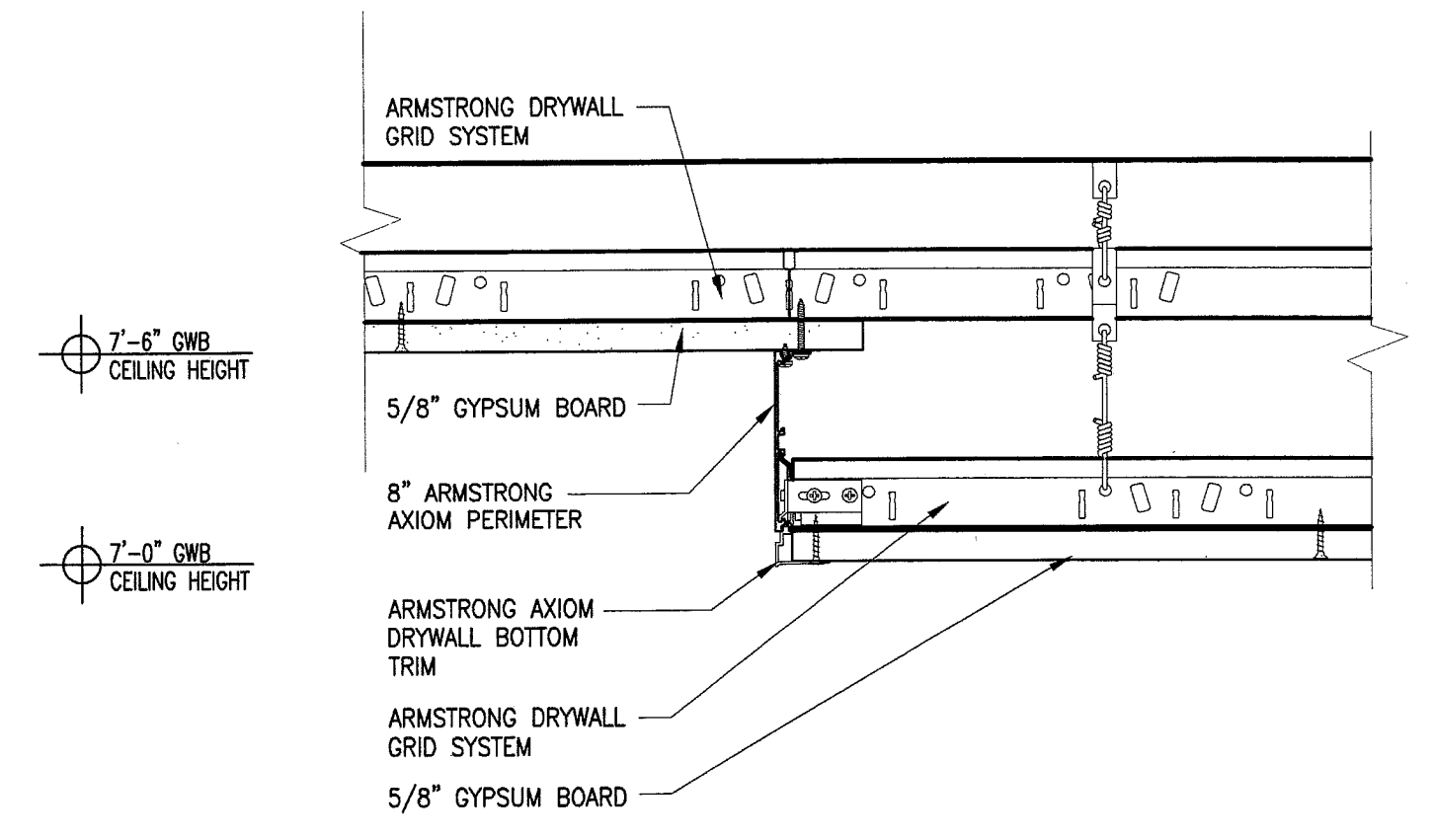
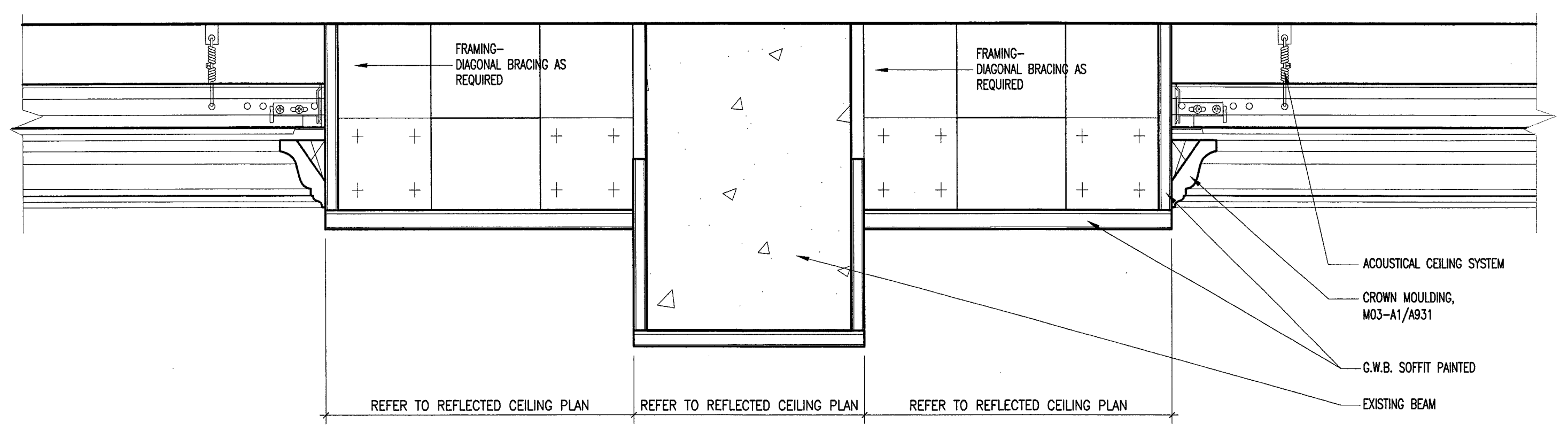


Gawron Turgeon ARCHITECTS
 29 Black Point Road
 Scarborough, Maine 04074
 www.gawronturgeon.com
 207-883-4307 tel 207-883-0361 fax

SEVENTY-FIVE STATE STREET
 SOUTH HARBOR SIDE THIRD FLOOR RENOVATIONS
 PORTLAND MAINE



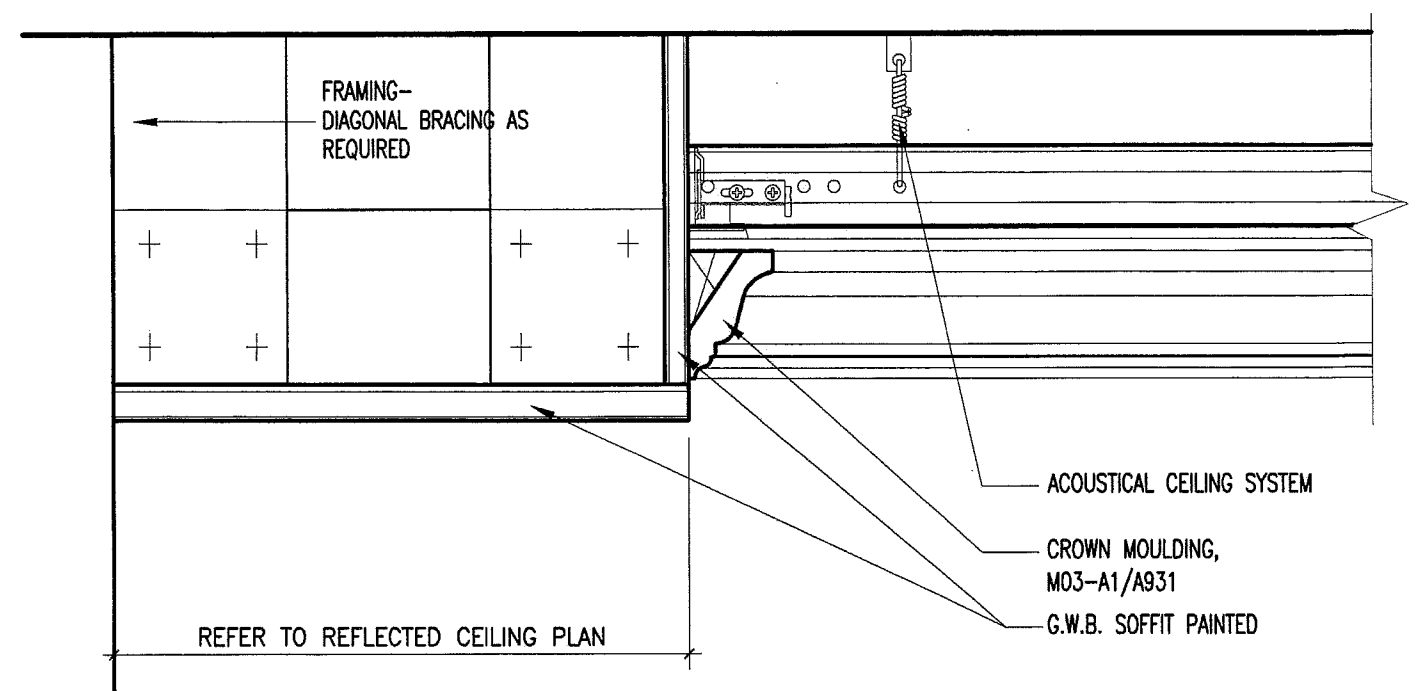
8'-0" EXISTING UNDERSIDE OF SLAB
 7'-6" ACT CEILING HEIGHT
 7'-2" GWB SOFFIT HEIGHT
 VERIFY GWB BEAM HEIGHT



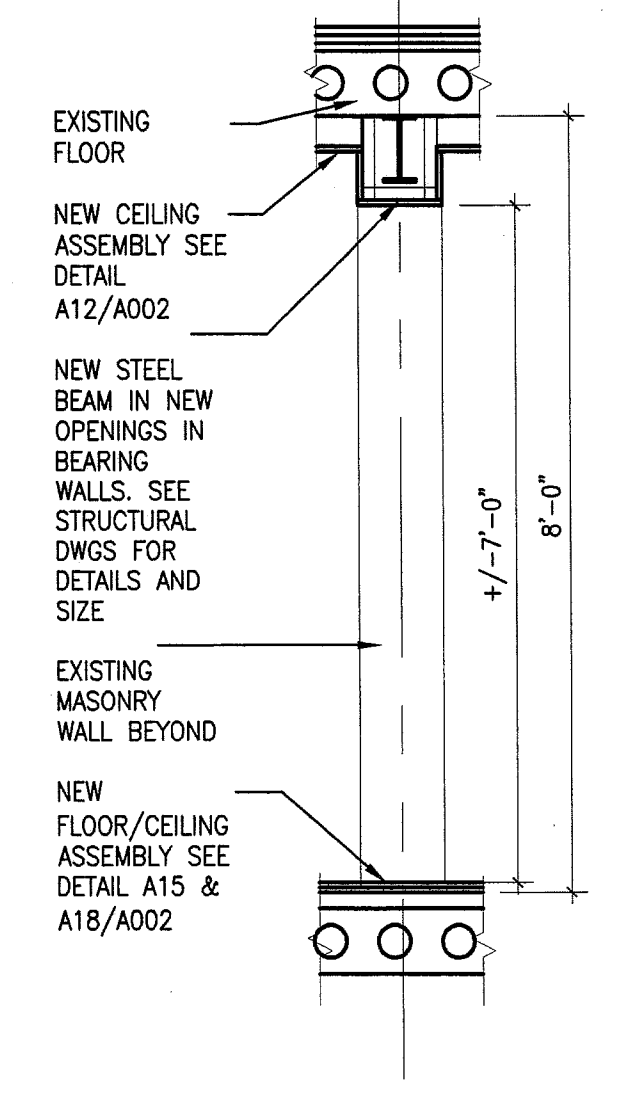
M1 SOFFIT DETAIL
 3"=1'-0" TYPICAL RESIDENT UNIT CEILING

M9 SOFFIT DETAIL
 3"=1'-0"

8'-0" EXISTING UNDERSIDE OF SLAB
 7'-6" ACT CEILING HEIGHT
 7'-2" GWB SOFFIT HEIGHT

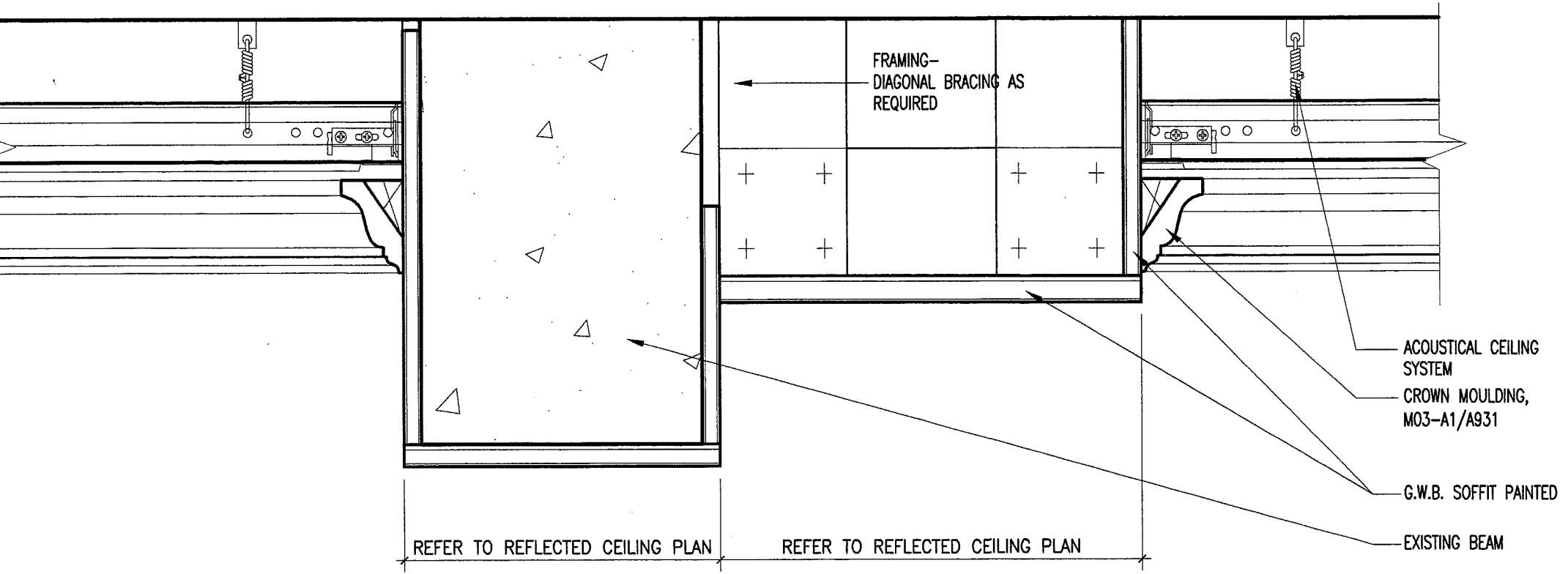


G9 SOFFIT DETAIL
 3"=1'-0"



A5 NEW MASONRY WALL DETAIL
 1/2"=1'-0"

8'-0" EXISTING UNDERSIDE OF SLAB
 7'-6" ACT CEILING HEIGHT
 7'-2" GWB SOFFIT HEIGHT
 VERIFY GWB BEAM HEIGHT



A9 SOFFIT DETAIL
 3"=1'-0"

REVISIONS		
#	DATE	DESCRIPTION
1	07-15-08	PRICING SET

DATE:	08.05.08
PROJECT #:	020108
DRAWN BY:	RLA
CHECKED BY:	MET
DRAWING SCALE:	3"=1'-0"

SHEET TITLE
 REFLECTED CEILING PLAN DETAILS

A302

© COPYRIGHT 1985-2008
 REPRODUCTION OR USE OF THIS DOCUMENT WITHOUT WRITTEN PERMISSION OF GAWRON TURGEON ARCHITECTS IS PROHIBITED

BUILDING PERMIT