

**GAWRON  
TURGEON  
ARCHITECTS**  
29 Black Point Road  
Scarborough, ME 04074  
www.gawronturgeon.com  
Tel. 207. 883. 6307  
Fax. 207. 883. 0361

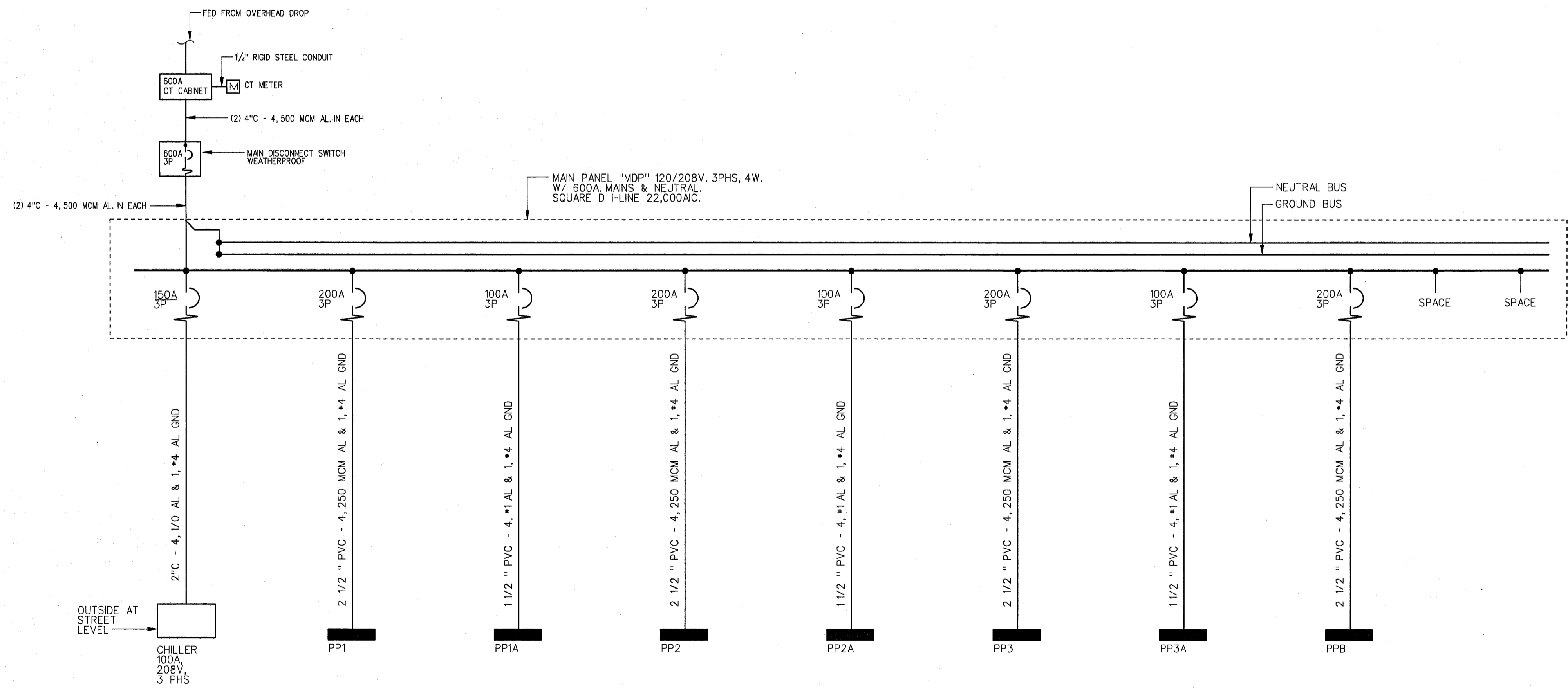
**CUTTER HOUSE RENOVATION**  
PORTLAND MAINE

**LIGHTING FIXTURE SCHEDULE**

TYPE	DESCRIPTION	LAMPS QUANTITY & TYPE	REMARKS
A	THE HOUSE OF LIGHTS/BRISTO *960845, BRONZE FINISH	(2) 60W MED.	SURFACE MOUNTED IN UNIT
B	THE HOUSE OF LIGHTS/BRISTO *960852, RUSTIC BRONZE FINISH	(3) 100W MED.	WALL MOUNTED VANITY LIGHT
C	THE HOUSE OF LIGHTS/BRISTO *960846, RUSTIC BRONZE FINISH	(3) 60W MED.	SURFACE MOUNTED IN DINING ROOM
D	THE HOUSE OF LIGHTS/BRISTO *960859, RUSTIC BRONZE FINISH	(3) 60W MED.	SURFACE MOUNTED IN DINING ROOM
F	LIGHTING UNIVERSE *451605, MAHOGANY BRONZE FINISH	(3) 60W B10 CAND C INC.	SEMI FLUSH IN CORRIDOR AND STAIR
G	LIGHTING UNIVERSE *451611, MAHOGANY BRONZE FINISH	(4) 60W B10 CAND C INC.	CHANDELIER AT STAIRS
H	LIGHTING UNIVERSE *451617, MAHOGANY BRONZE FINISH	(2) 60W B10 CAND C INC.	WALL SCONCE IN CORRIDOR
J	PRESCOLITE* CFT632HEB, STF602, SS, CL	(1) CF42W	RECESSED LENSED DOWN LIGHT
K	KICHLER *9707VP	(1) 100W MED.	EXTERIOR SCONCE - SELECTED BY ARCHITECT
L	COLUMBIA *W2-117-EB8LH-120	(1) F17T8/SPX35	4' INDUSTRIAL STRIPLIGHT
M	LEVITON *8827-CW4	(1) 100W INC	INCANDESCENT LAMP HOLDER
N	COLUMBIA *CSR4-232-EB8LH120	(2) F32T8/SPX35	WALL BRACKET MOUNTED IN CLOSET
P	COLUMBIA*UCS-24-1-13T5-120	(1) F13 T5	UNDERCABINET IN KITCHEN

**SYMBOL LEGEND**

- POWER PANEL, 120/208V, 3PHS, 4WIRE
- ⊕ ELECTRIC MOTOR DRIVEN EQUIPMENT, HP SHOWN
- SM MANUAL MOTOR STARTER SWITCH WITH THERMAL OVERLOAD DEVICE, MOUNTED AT UNIT
- ⊙ JUNCTION BOX
- ⊠ LIGHTING FIXTURES- CAPITAL LETTERS DENOTE TYPE AS PER LIGHTING FIXTURE SCHEDULE. LOWER CASE LETTERS INDICATE SWITCH CONTROL.
- RACEWAY & WIRING OR MC CABLE RUN CONCEALED IN WALLS/CEILINGS.
- - - RACEWAY & WIRING RUN EXPOSED
- RACEWAY & WIRING RUN CONCEALED UNDER FLOOR
- HP HOME RUN TO PANEL- ARROWS INDICATE QUANTITY OF CIRCUITS- NUMERALS DENOTE CIRCUIT NUMBERS
- ⊠ SELF CONTAINED EMERGENCY LIGHTING UNIT W/2 HEADS DUAL-LITE \*L22 10 WATTS FOR 90 MINUTES, 6V
- S SINGLE POLE SWITCH, 120 VOLT, 20 AMP, SPEC GRADE, GROUNDING TYPE, MOUNT 48" AFF, 3-3-WAY, 4-4 WAY, P-PILOT LOWER CASE LETTER INDICATES FIXTURE OR CONTROLLED LOAD. PILOT LIGHT SWITCHES SHALL BE PROVIDED W/ ENGRAVED NAMEPLATE IDENTIFYING USE.
- ⊗ EXIT LIGHT FIXTURE - UNSWITCHED - SEE LIGHTING FIXTURE SCHEDULE
- D DUPLEX RECEPTACLE- 20A, 125V SPEC GRADE GROUNDING TYPE AND MATCHING PLATE - MOUNT 18" AFF. "R" DENOTES REFRIGERATOR, "D" DENOTES DOUBLE DUPLEX
- GF DUPLEX RECEPTACLE- GROUND FAULT OUTLET 20A, 125V- WITH MATCHING PLATE FURNISHED W/ OUTLET. FLUSH MOUNTED 45" AFF EXCEPT AS NOTED.
- FACP FIRE ALARM CONTROL PANEL
- 30 MH FIRE ALARM AUDIO/VISUAL, MOUNT 6'-8" AFF - NUMERAL DENOTES CANDELA RATING "MH" DENOTES MINI HORN
- 15 SV FIRE ALARM VISUAL STROBE ONLY - FLUSH MOUNT 6'-8" AFF NUMERALS DENOTE CANDELA RATINGS.
- 135° 200° SYSTEM CONNECTED FIXED TEMPERATURE HEAT DETECTOR
- ⊕ SYSTEM CONNECTED SMOKE DETECTOR, PHOTOELECTRIC TYPE "ER" - ELEVATOR RECALL, "SB" - W/ SOUNDER BASE
- F FIRE ALARM PULL STATION - MOUNT 48" AFF
- TV TV OUTLET LOCATION - CABLE AND JACKS BY E.C. EACH LOCATION TO HAVE SEPARATE HOMERUN OF RG6 BACK TO TBB.



**ONE LINE DIAGRAM**  
SCALE: NONE

**REVISIONS**

#	DATE	DESCRIPTION

DATE:	2/2/07
PROJECT #	060905
DRAWN BY:	SPD
CHECKED BY:	WSBJR
DRAWING SCALE	NONE

**SHEET TITLE**  
ELECTRICAL  
DETAILS, LEGEND  
AND SCHEDULES

**E-201**

© COPYRIGHT 1985-2003  
REPRODUCTION OR USE OF  
THIS DOCUMENT WITHOUT  
WRITTEN PERMISSION OF  
GAWRON ARCHITECTS IS PROHIBITED

**2/2/07 PERMIT SET**