

**GAWRON TURGEON ARCHITECTS**  
 29 Black Point Road  
 Scarborough, ME 04074  
 www.gawronturgen.com  
 Tel. 207. 883. 6307  
 Fax. 207. 883. 0361

**SEVENTY-FIVE STATES STREET**  
 CUTLER HOUSE RENOVATION  
 PORTLAND MAINE

REVISIONS	
#	DESCRIPTION

DATE:	2/2/07
PROJECT #:	069905
DRAWN BY:	RLA
CHECKED BY:	MET
DRAWING SCALE:	AS NOTED

SHEET TITLE  
 INTERIOR DETAILS

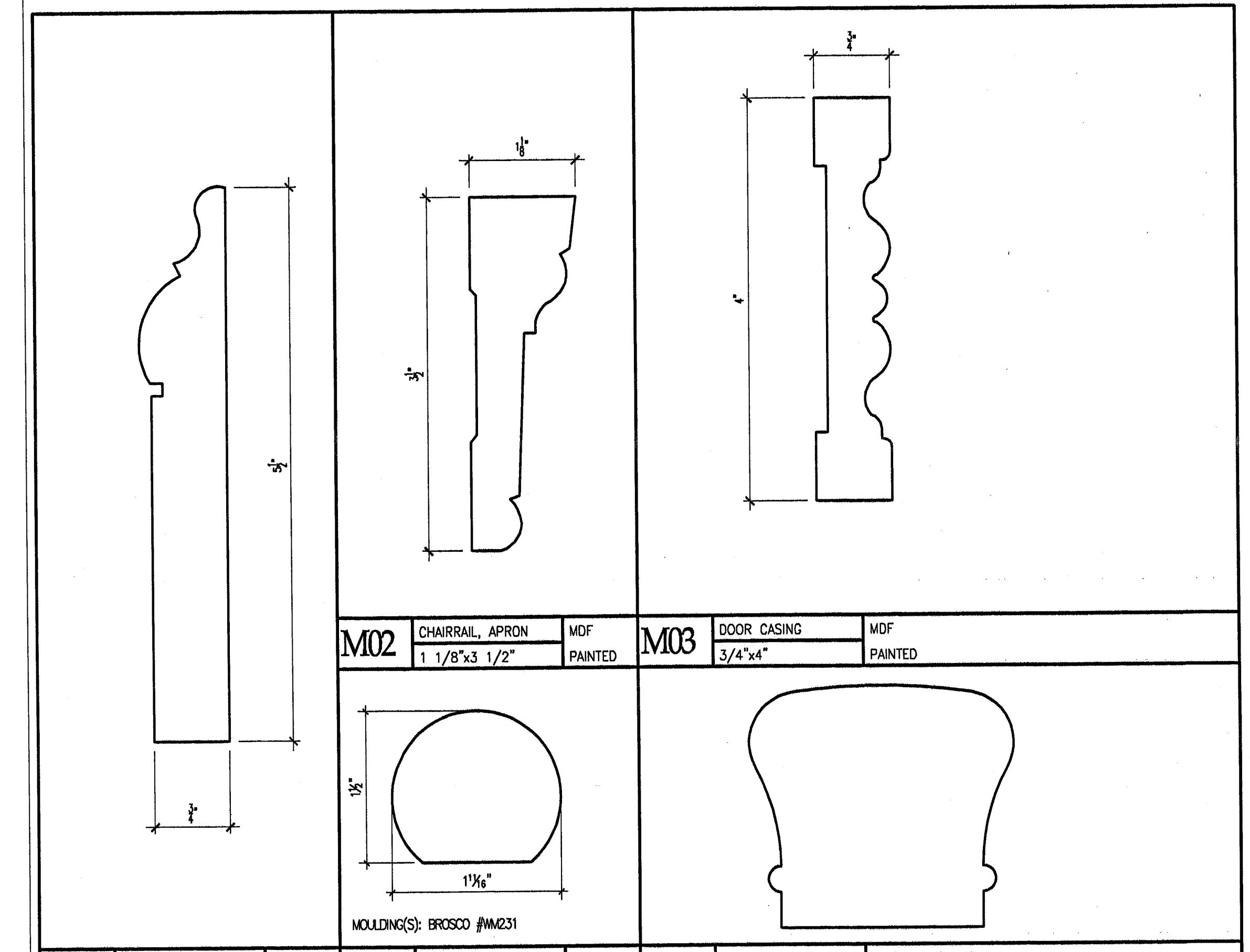
**A931**

© COPYRIGHT 1985-2003  
 REPRODUCTION OR RESALE OF  
 THIS DOCUMENT WITHOUT  
 WRITTEN PERMISSION IS PROHIBITED  
 GAWRON ARCHITECTS IS PROPRIETARY

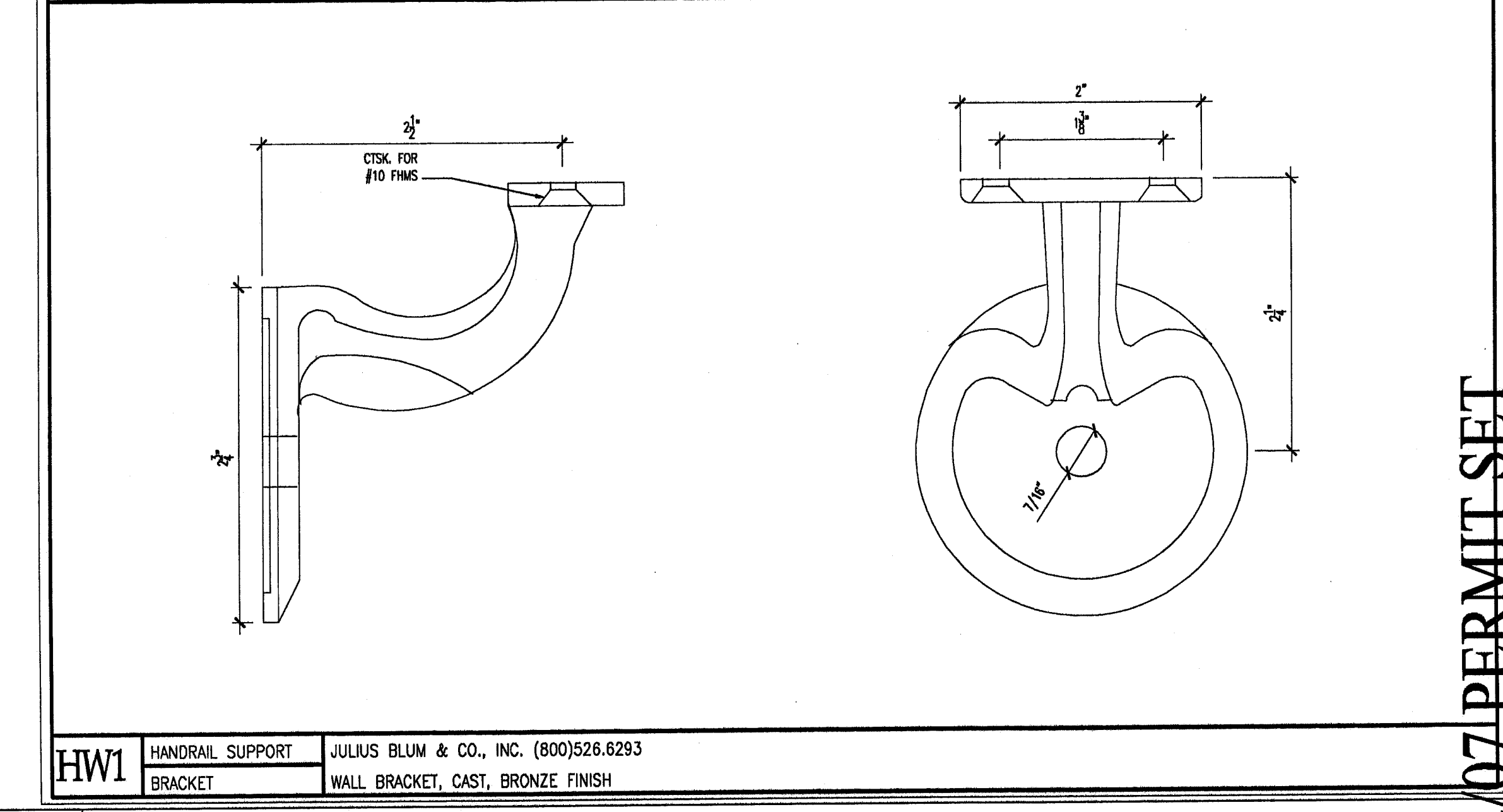
1. ARCHITECT SHALL SELECT TRANSITION STRIP AND COLOR 2. CENTER TRANSITION / REDUCER STRIP UNDER CENTER LINE OF DOOR	1. REFER TO INTERIOR FINISH FLOOR PATTERN PLAN FOR LIMITATIONS OF FLOORING	1. RUNNING TRIM SHALL BE CUT ON AN ANGLE WHEN FINISHING CONTIGUOUSLY.
TR1 CARPET TO RESILIENT	TR2 CARPET TO CARPET	TR3 WOOD TRIM

**O13 TRANSITION DETAILS**

NTS

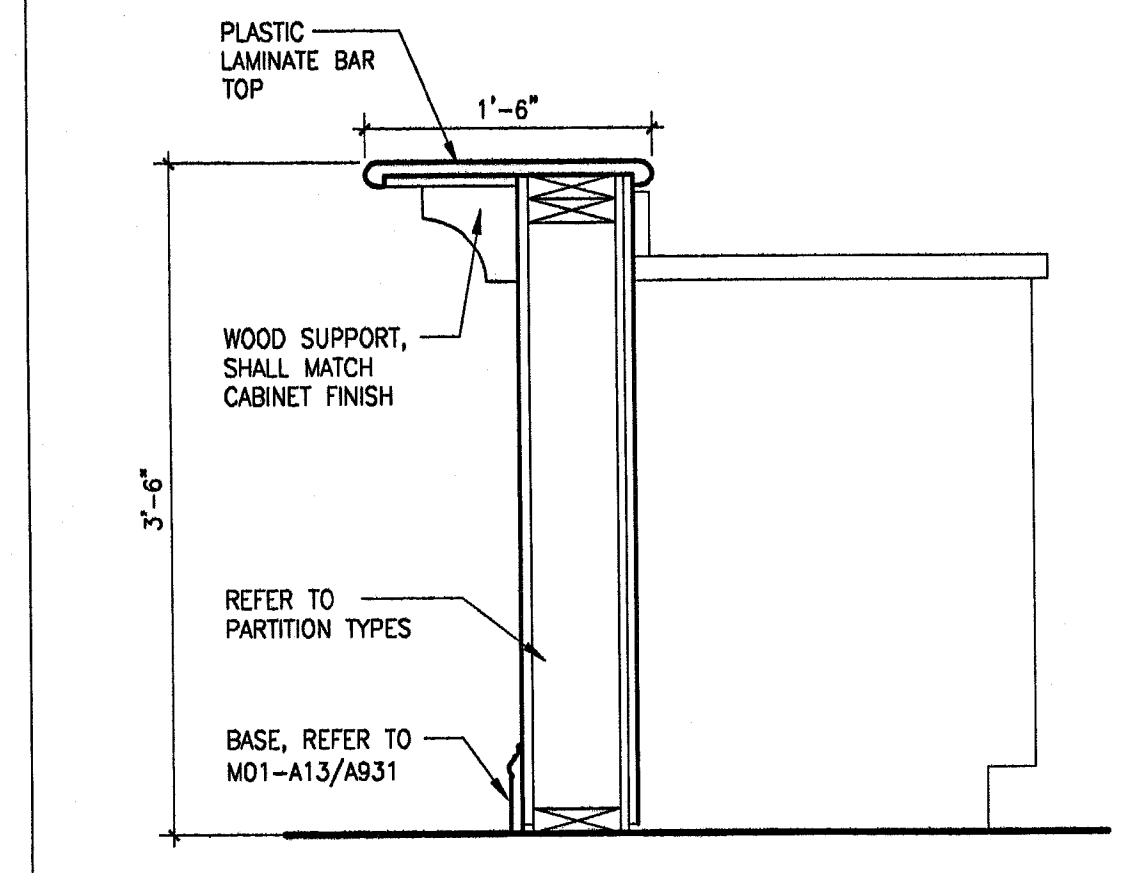


<b>M01</b> WALL BASE	MDF PAINTED	<b>M04</b> HANDRAIL	1 1/2"x1 11/16"	<b>M05</b> HANDRAIL	CROWN HERITAGE CLASSIC SERIES HANDRAIL
----------------------	-------------	---------------------	-----------------	---------------------	--



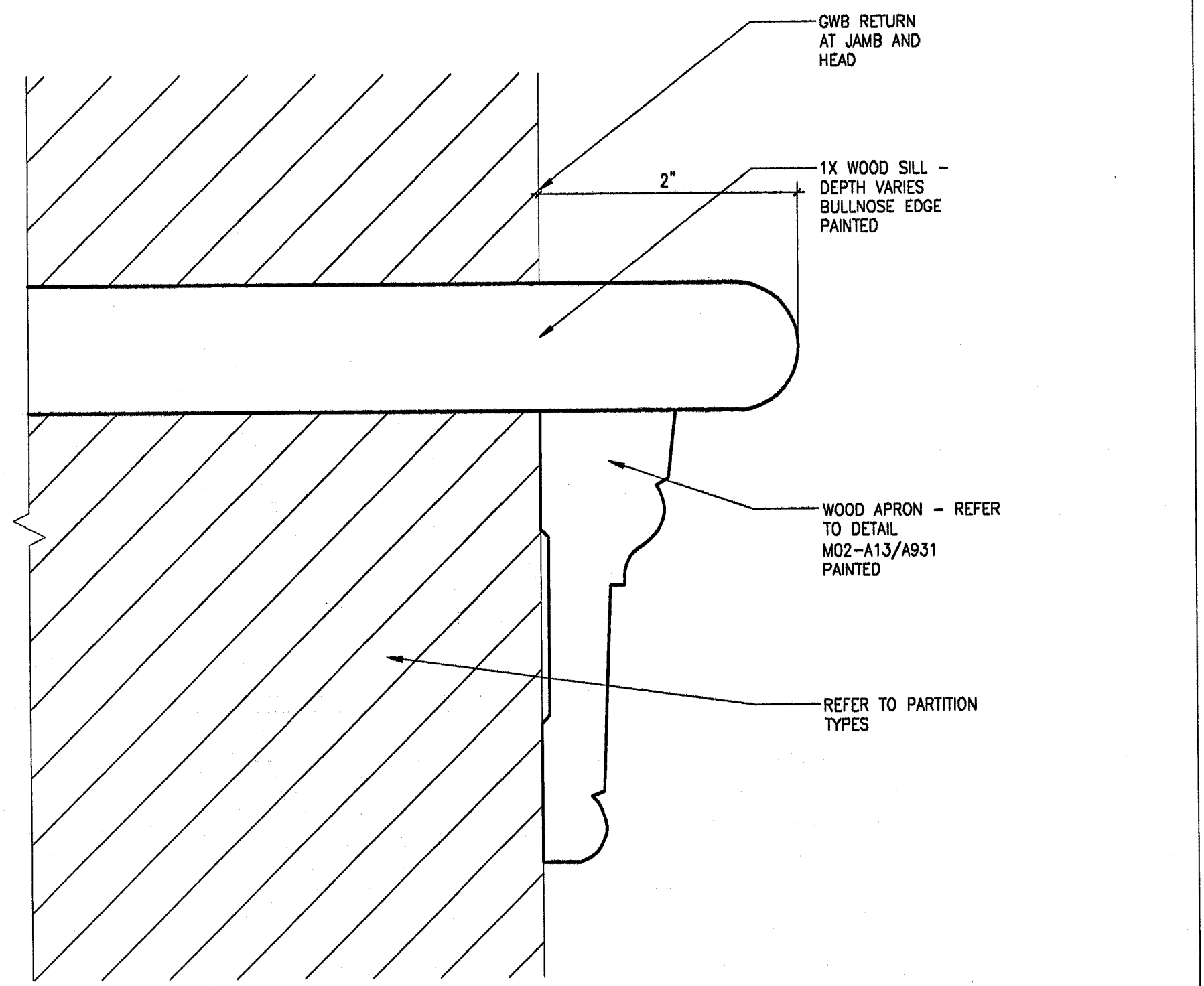
<b>HW1</b> HANDRAIL SUPPORT BRACKET	JULIUS BLUM & CO., INC. (800)526.6293 WALL BRACKET, CAST, BRONZE FINISH
-------------------------------------	--

**L9 NOT USED**



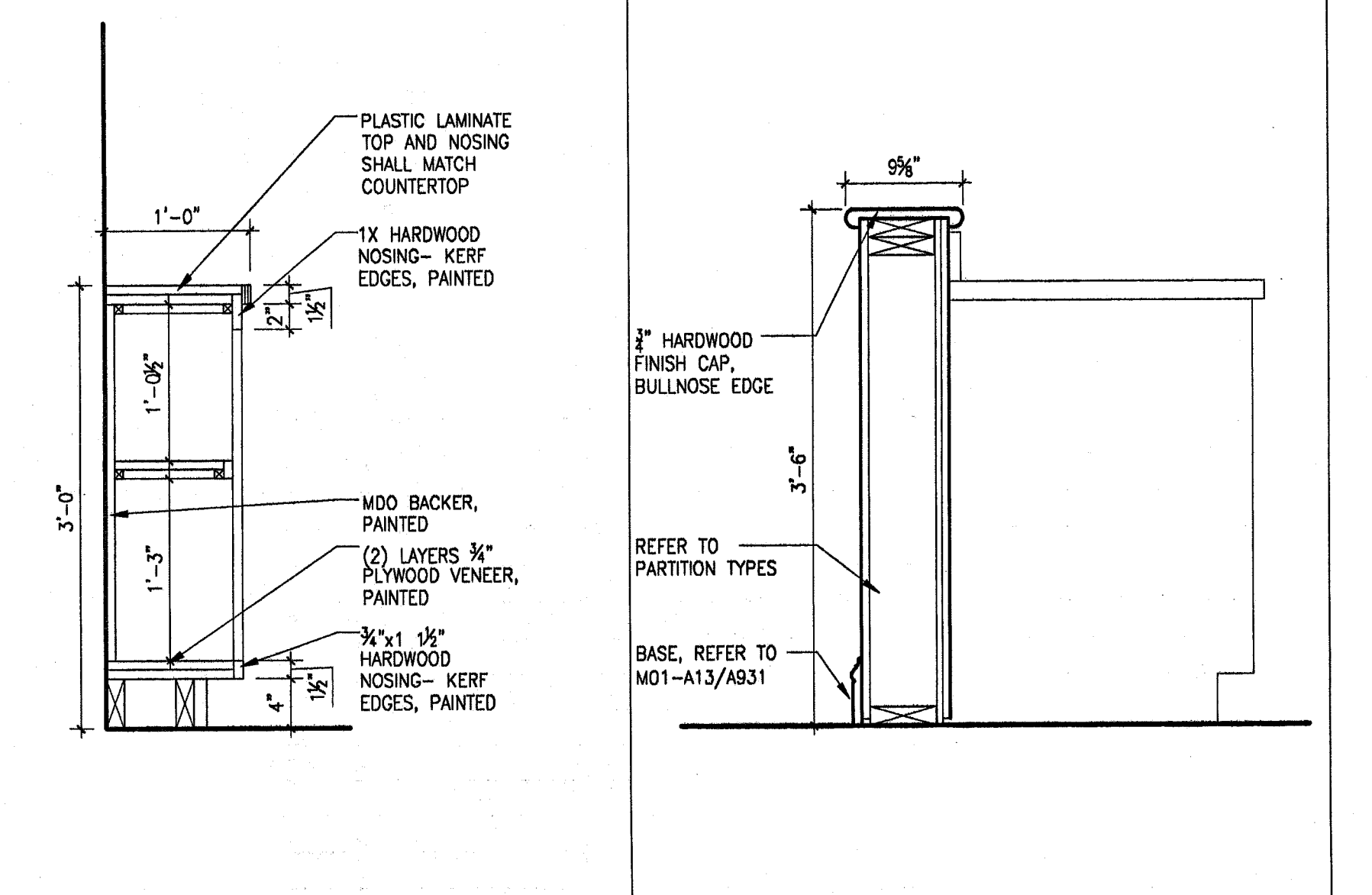
**F9 HALFWALL-BAR DETAIL**

1"-1'-0"



**F1 WINDOW SILL DETAIL**

1'-0"-1'-0"

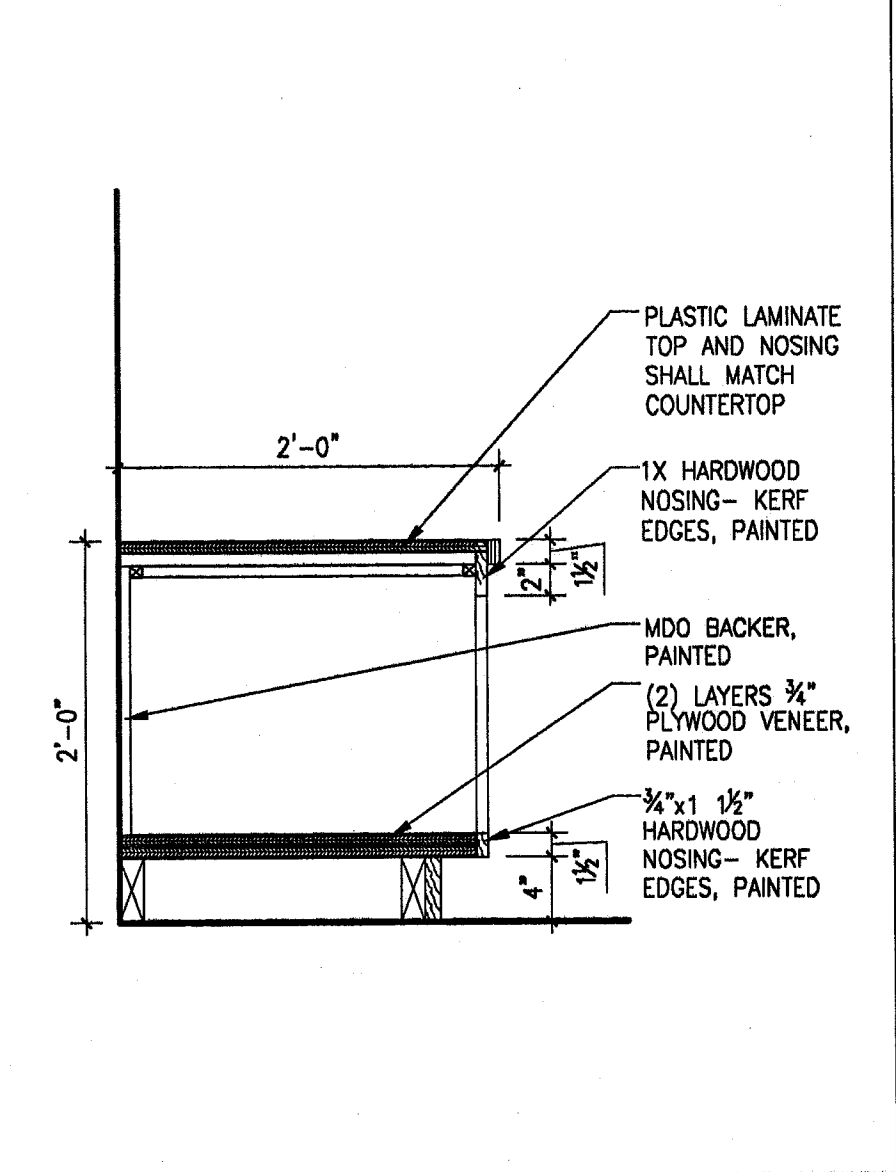


**A1 BOOKCASE**

1"-1'-0"

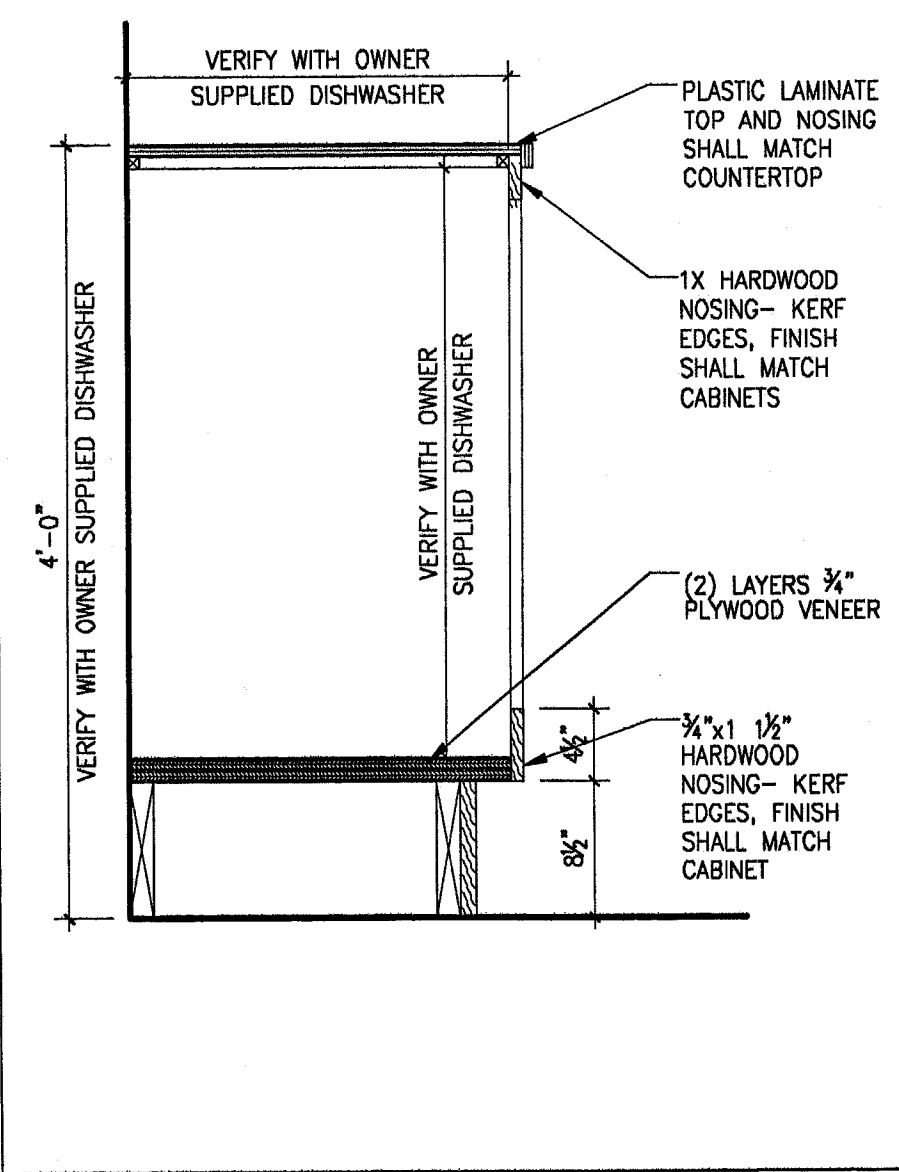
**A4 HALFWALL DETAIL**

1"-1'-0"



**A7 BOOKCASE**

1"-1'-0"



**A10 DISHWASHER DETAIL**

1"-1'-0"

**A13 MILLWORK DETAILS**

1'-0"-1'-0"

2/2/07 PERMIT SET