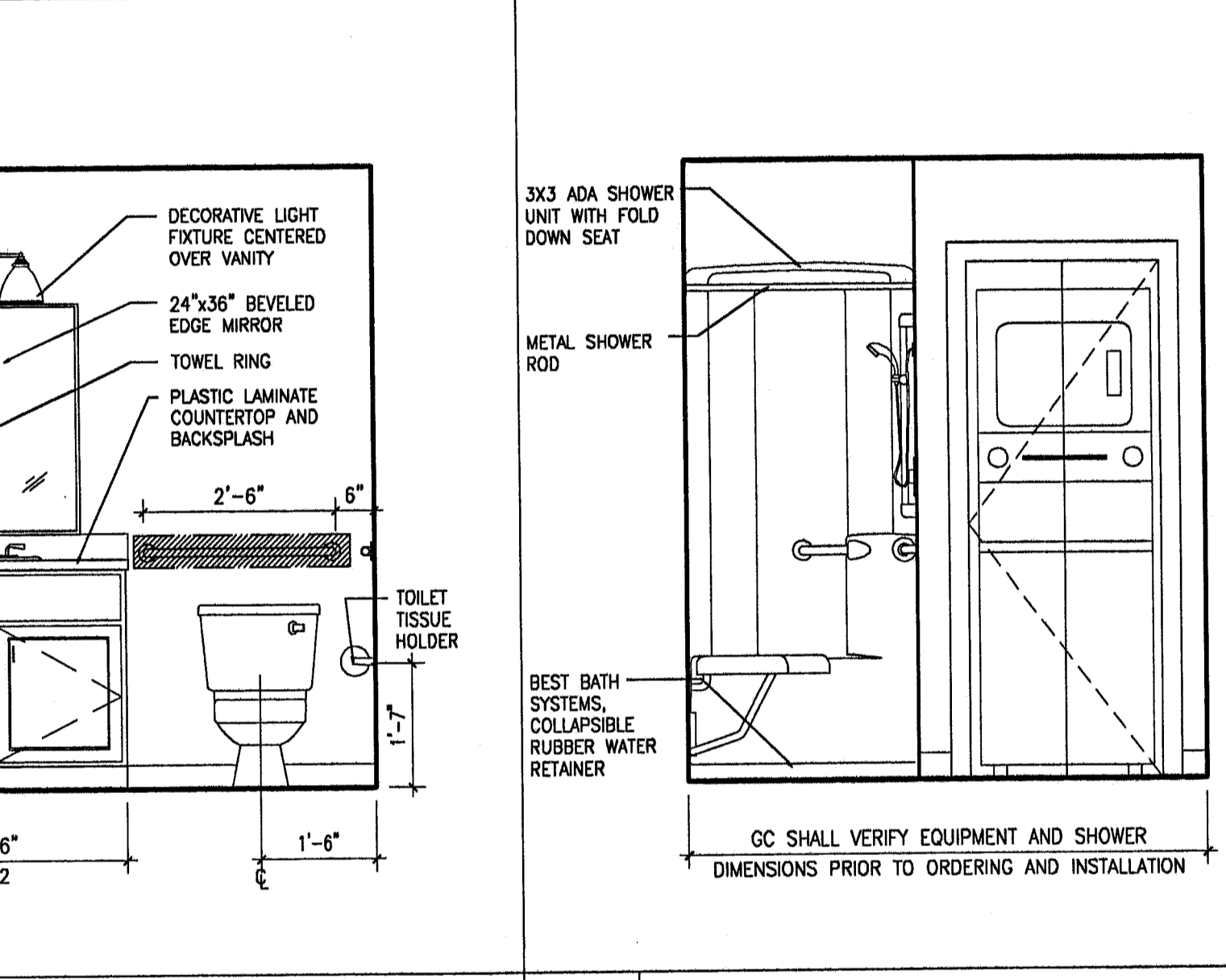
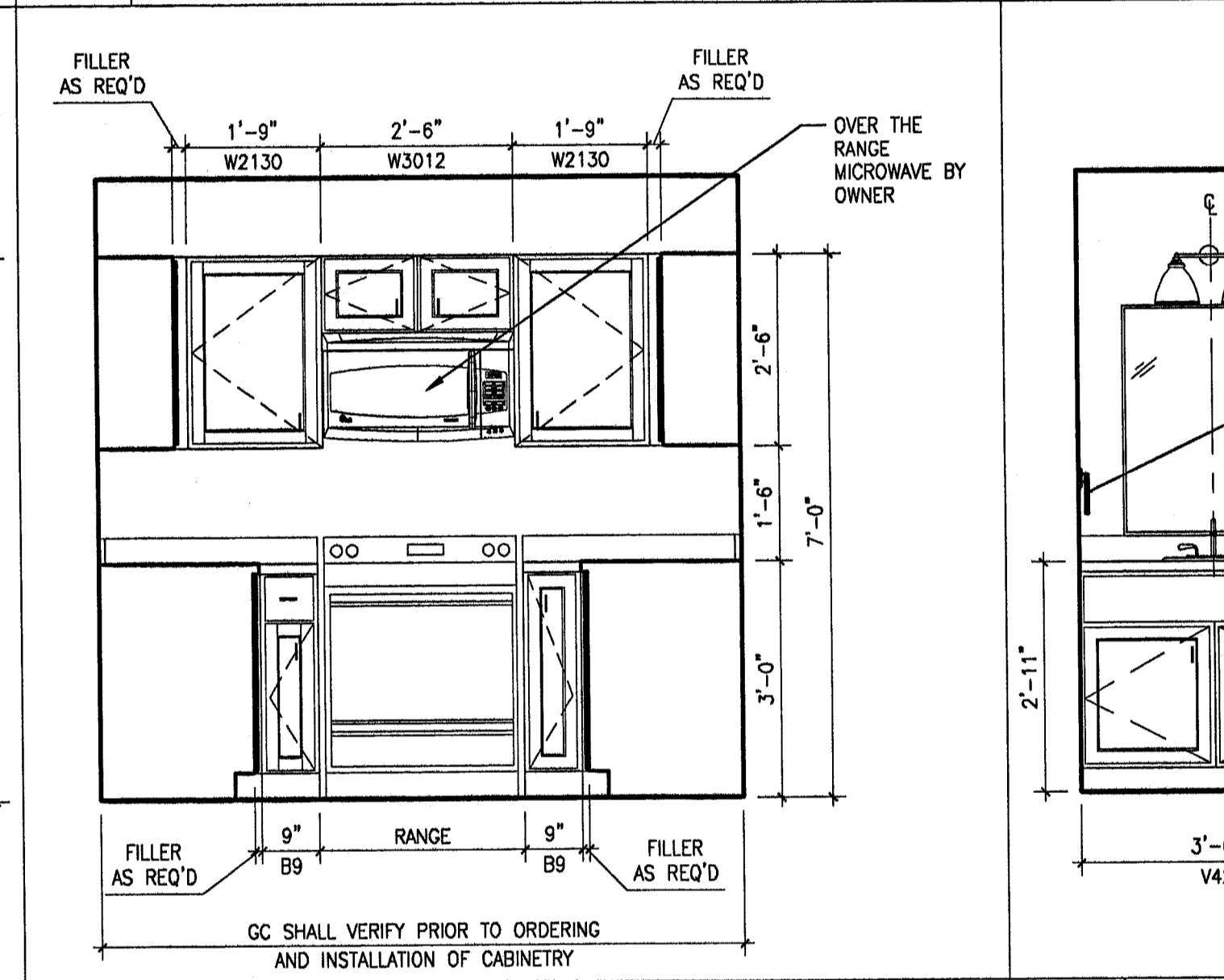
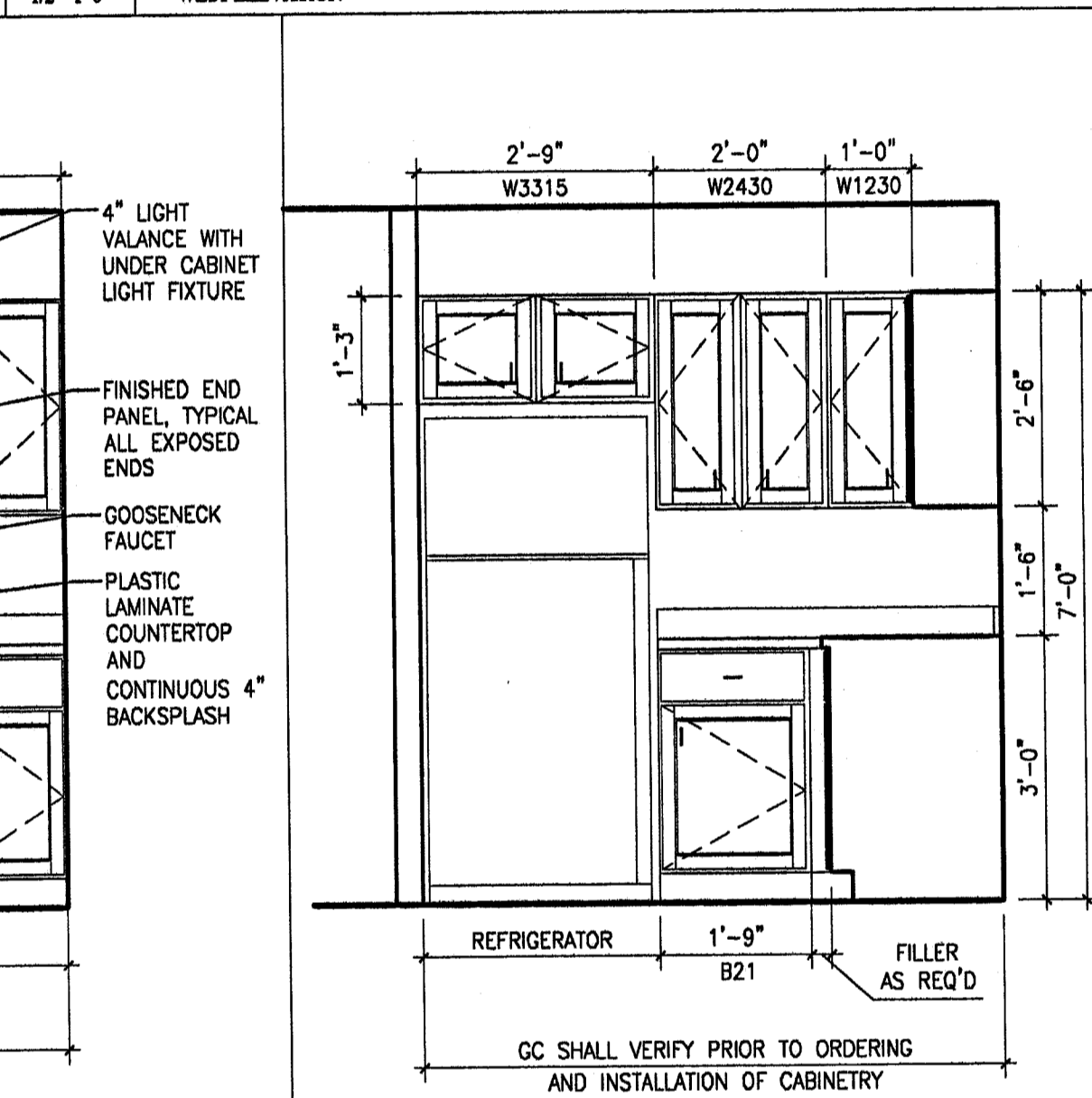
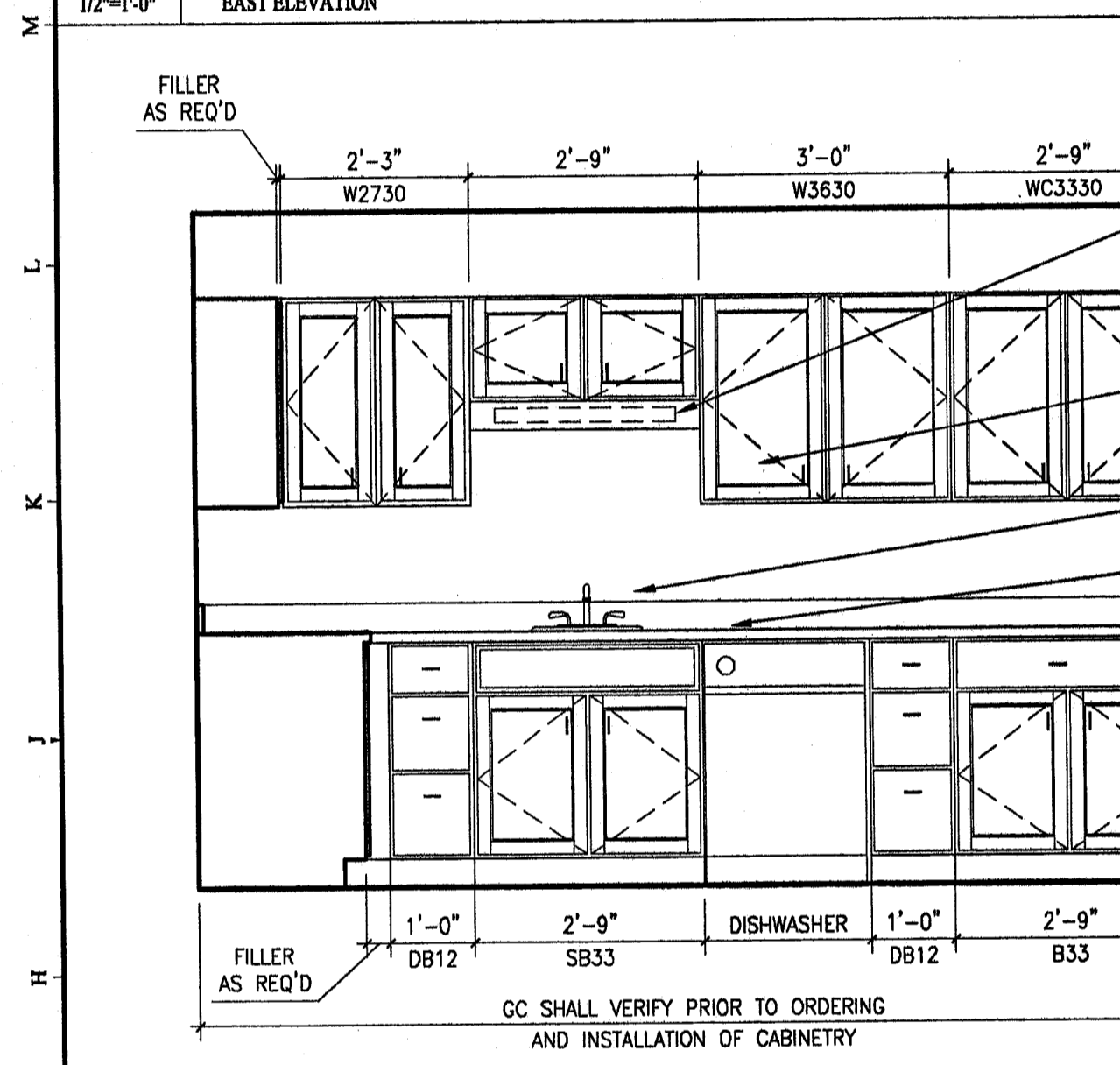


M1 UNIT 348- BATHROOM
1/2"=1'-0" EAST ELEVATION

M5 UNIT 348- BATHROOM
1/2"=1'-0" WEST ELEVATION

M9 UNIT 348- KITCHEN
1/2"=1'-0" WEST ELEVATION

M14 UNIT 348- KITCHEN
1/2"=1'-0" EAST ELEVATION



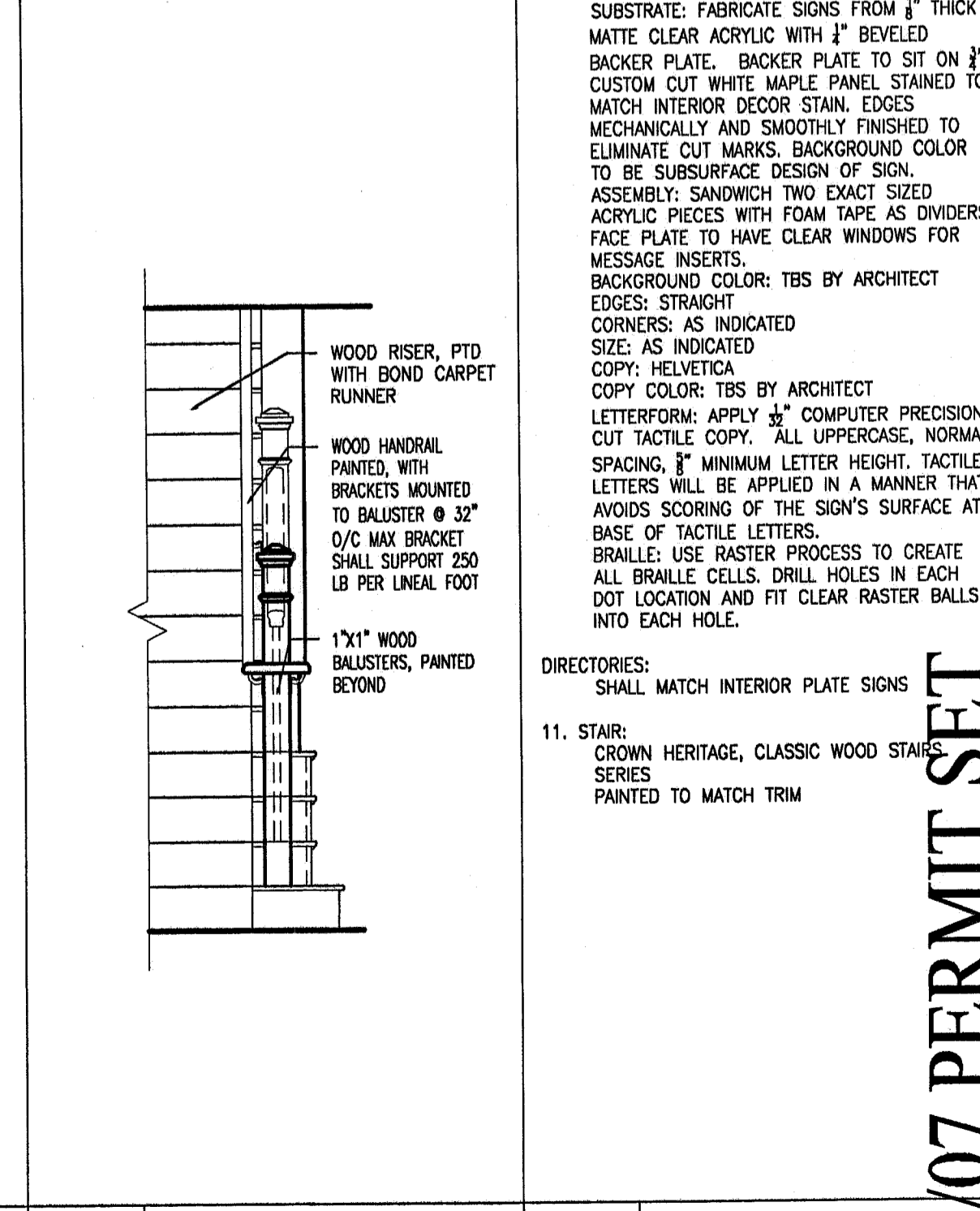
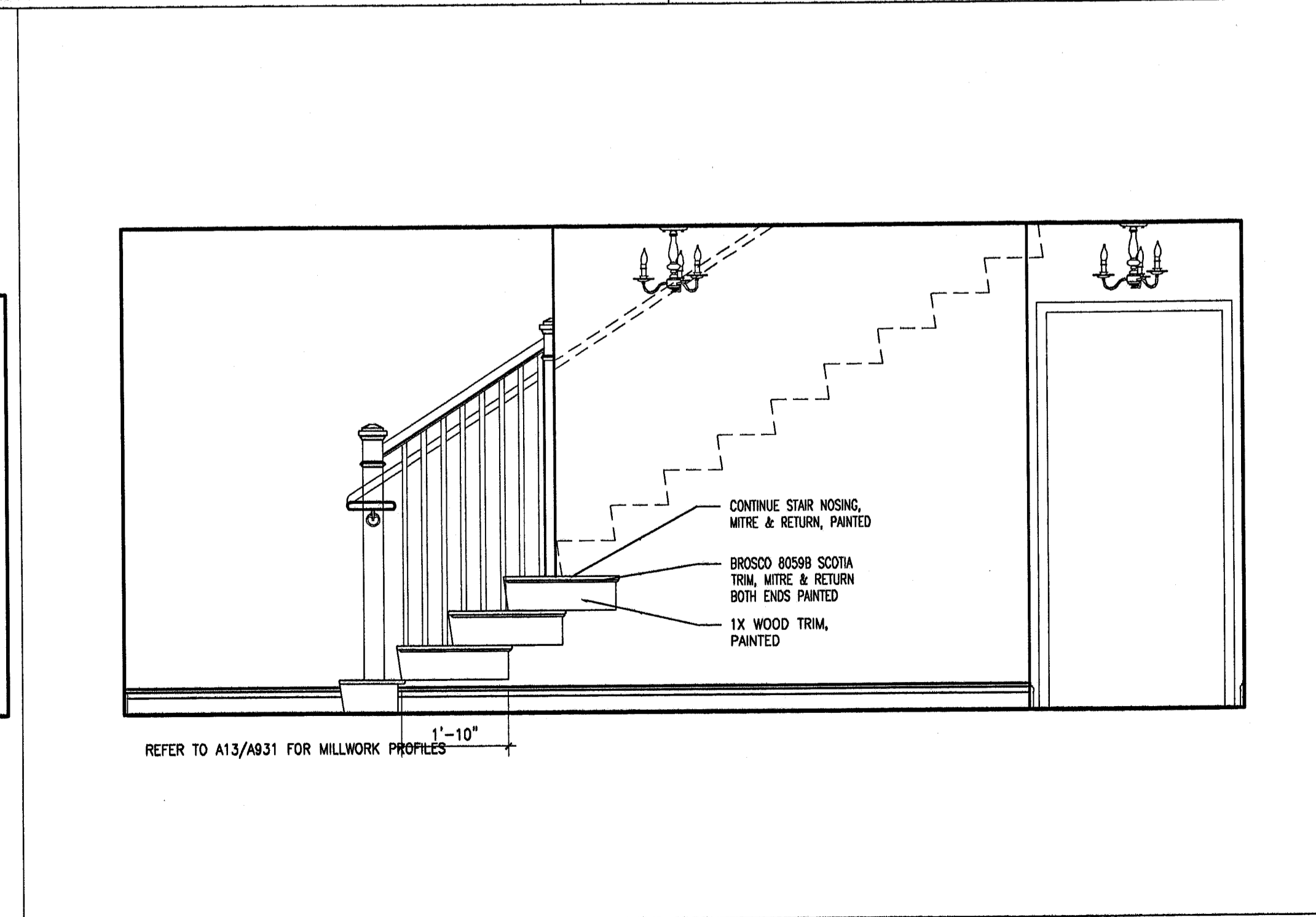
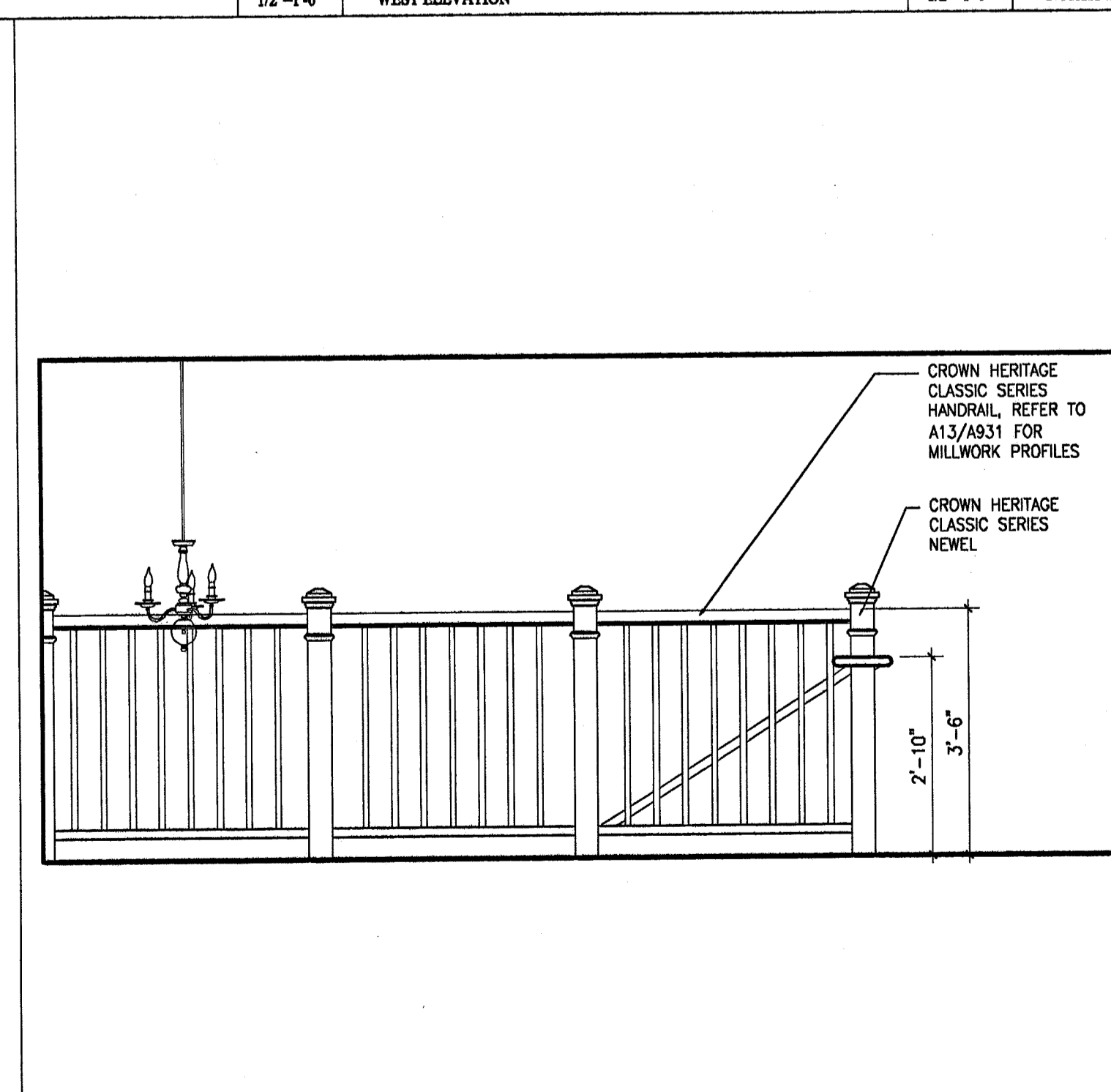
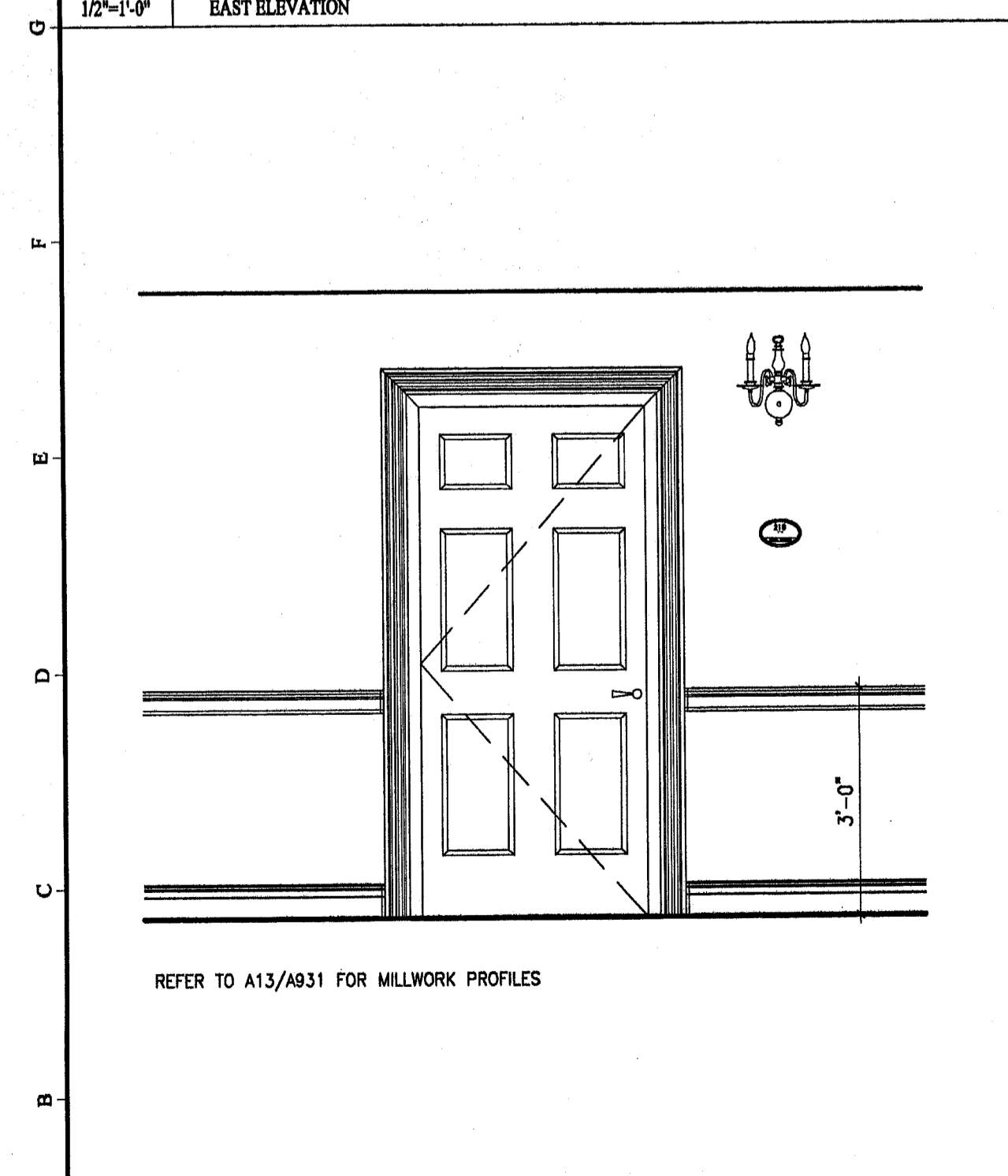
G1 UNIT 347- KITCHEN
1/2"=1'-0" EAST ELEVATION

G6 UNIT 347- KITCHEN
1/2"=1'-0" WEST ELEVATION

G9 UNIT 347- KITCHEN
1/2"=1'-0" NORTH ELEVATION

G13 UNIT 347- BATHROOM
1/2"=1'-0" WEST ELEVATION

- NOTES:**
- KITCHEN AND VANITY CABINERY: ARMSTRONG WORLD INDUSTRIES, INC. PREMIER SERIES CASEWORK. DOOR STYLE: SIENA. FINISH: TOFFEE. HARDWARE: TBD. ADA UNIT 124 - PROVIDE ARMSTRONG UNIVERSAL ACCESS BASE CABINETS FOR THE KITCHEN AND VANITY CABINERY. 8 1/2" RAISED TOE SPACE. 32 1/2" HEIGHT CABINET. UPGRADE: PROVIDE DOVETAIL DRAWERS WITH FULL EXTENSION DRAWER GLIDES AND WOOD END PANELS. CROWN: 2" CROWN MOLDING WOOD AND FINISH SHALL MATCH CABINET FINISH.
 - TOILET ACCESSORIES: CREATIVE SPECIALTIES INTERNATIONAL THE DANBURY COLLECTION. FINISH: OIL RUBBED BRONZE. 18" TOWEL BAR: DN67180RB. TOWEL RING: DN57850RB. PAPER HOLDER: DN57800RB. ROBE HOOK: DN67030RB.
 - MEDICINE CABINET: ARMSTRONG WORLD INDUSTRIES, INC. MCR1624. DOOR STYLE: SIENA. NON MIRROR DOOR. FINISH: TOFFEE.
 - WASHER/DRYER UNIT DIMENSIONS BASED ON GE UNINITIALIZED SPACEMAKER WASHER AND DRYER. GC SHALL VERIFY AND COORDINATE ALL DIMENSIONS WITH OWNER SUPPLIED UNIT.
 - APPLIANCES PROVIDED BY OWNER. GC SHALL VERIFY AND COORDINATE DIMENSIONS PRIOR TO ORDERING AND INSTALLATION OF CABINERY.
 - WALL SAFES SHALL BE PROVIDED BY OWNER AND INSTALLED BY GC. GC SHALL VERIFY AND COORDINATE ALL DIMENSIONS PRIOR TO INSTALLATION - REFER TO FLOOR PLAN FOR LOCATIONS.
 - SHELVING/ ROD AND SHELF SYSTEM: CLOSETMAID, A DIVISION OF CLARSON INTERNATIONAL OR SCHULTE. UNIT CLOSURE: 12 INCH DEEP LINEN CLOSURE: 15 INCH DEEP. PROVIDE VINYL COATED, ADJUSTABLE WIRE SHELVING SYSTEM. SHELF WITH MATCHING MOUNTING HARDWARE FOR ATTACHMENT TO CONCEAL WOOD BLOCKING. GC SHALL COORDINATE MOUNTING HEIGHT WITH OWNER.
 - GRAB BARS: FRANKLIN BRASS, SAFETY FIRST CUSTOM COLOR SERIES. COLOR: WHITE. BARS SHALL BE THERMOPLASTIC OR RESIN-COATED STEEL, 1 1/2" DIAMETER, .064" MINIMUM WALL THICKNESS WITH 1/8" THICK FLANGES. CONCEAL FASTENER MOUNTING LENGTHS AND CONFIGURATION SHALL BE INDICATED ON THE DRAWINGS. GRAB BARS SHALL BE SCREWED TO SOLID BLOCKING IN STUD PARTITIONS. INSTALL GRAB BARS TO WITHSTAND A DOWNWARD LOAD OF AT LEAST 250 LBF. WHEN TESTED ACCORDING TO METHOD IN ASTM F 446.
 - CORNER GUARDS: C/S ACROVYN, STYLE SM-10, BULLNOSE EDGE, COLOR TO BE SELECTED FROM ACROVYN STANDARD AND OPTIONAL COLORS, MATCHING TOP AND BOTTOM CAPS, SURFACE MOUNT ALUMINUM RETAINER. CONTACT: METRO ARCH SALES COMPANY, 781-545-8100. QUANTITY: 75.
 - SIGNAGE: NEW ROOM AND DIRECTORY SIGNAGE SHALL MATCH EXISTING SIGNAGE. INTERIOR PLATE SIGNS MESSAGE INSERT SIGNS: SUBSTRATE: FABRICATE SIGNS FROM 1/2" THICK MATTE CLEAR ACRYLIC WITH 1" BEVELED BACKER PLATE. BACKER PLATE TO SIT ON 3/4" CUSTOM CUT WHITE MAPLE PANEL STAINED TO MATCH INTERIOR DECOR STAIN. EDGES MECHANICALLY AND SMOOTHLY FINISHED TO ELIMINATE CUT MARKS. BACKGROUND COLOR TO BE SUBSURFACE DESIGN OF SIGN. ASSEMBLY: SANDWICH TWO EXACT SIZED ACRYLIC PIECES WITH FOAM TAPE AS DIVIDERS. FACE PLATE TO HAVE CLEAR WINDOWS FOR MESSAGE INSERTS. BACKGROUND COLOR: TBS BY ARCHITECT. EDGES: STRAIGHT. CORNERS: AS INDICATED. SIZE: AS INDICATED. COPY: HELVETICA. LETTERFORM: APPLY 1/8" COMPUTER PRECISION CUT TACTILE COPY. ALL UPPER CASE, NORMAL SPACING, 3/8" MINIMUM LETTER HEIGHT. TACTILE LETTERS WILL BE APPLIED IN A MANNER THAT AVOIDS SCORING OF THE SIGN'S SURFACE AT BASE OF TACTILE LETTERS. BRAILLE: USE RASTER PROCESS TO CREATE ALL BRAILLE CELLS. DRILL HOLES IN EACH DOT LOCATION AND FIT CLEAR RASTER BALLS INTO EACH HOLE. DIRECTORIES: SHALL MATCH INTERIOR PLATE SIGNS.
 - STAIR: CROWN HERITAGE, CLASSIC WOOD STAIRS. SERIES: PAINTED TO MATCH TRIM.



A1 TYPICAL UNIT ENTRY
1/2"=1'-0"

A5 CORR 350
1/2"=1'-0" WEST ELEVATION

A10 CORR 254
1/2"=1'-0" WEST ELEVATION

A17 STR 2
1/2"=1'-0" NORTH ELEVATION

A19 NOTES
NTS

REGISTERED ARCHITECT
STANLEY GAWRON
STATE OF MAINE
No. 1145

GAWRON TURGEON ARCHITECTS
29 Black Point Road
Scarborough, ME 04074
www.gawronturgen.com
Tel. 207. 883. 6307
Fax. 207. 883. 0561

SEVENTY-FIVE STATES STREET
CUTLER HOUSE RENOVATION
PORTLAND MAINE

REVISIONS	
#	DESCRIPTION

DATE: 2/2/07
PROJECT #: 060905
DRAWN BY: RLA
CHECKED BY: MET
DRAWING SCALE: AS NOTED

SHEET TITLE
INTERIOR ELEVATIONS

A924

© COPYRIGHT 1985-2003
REPRODUCED OR BY ANY OF
THIS DOCUMENT WITHOUT
WRITTEN PERMISSION OF
GAWRON ARCHITECTS IS PROHIBITED

2/2/07 PERMIT SET