

**GAWRON TURGEON ARCHITECTS**  
 29 Black Point Road  
 Scarborough, ME 04074  
 www.gawronturgeon.com  
 Tel. 207.883.6307  
 Fax. 207.883.0361

**SEVENTY-FIVE STATE STREET**  
 CUTLER HOUSE RENOVATION  
 PORTLAND MAINE

REVISIONS		
#	DATE	DESCRIPTION

DATE:	2/2/07
PROJECT #	069905
DRAWN BY:	RLA
CHECKED BY:	MET
DRAWING SCALE	AS NOTED

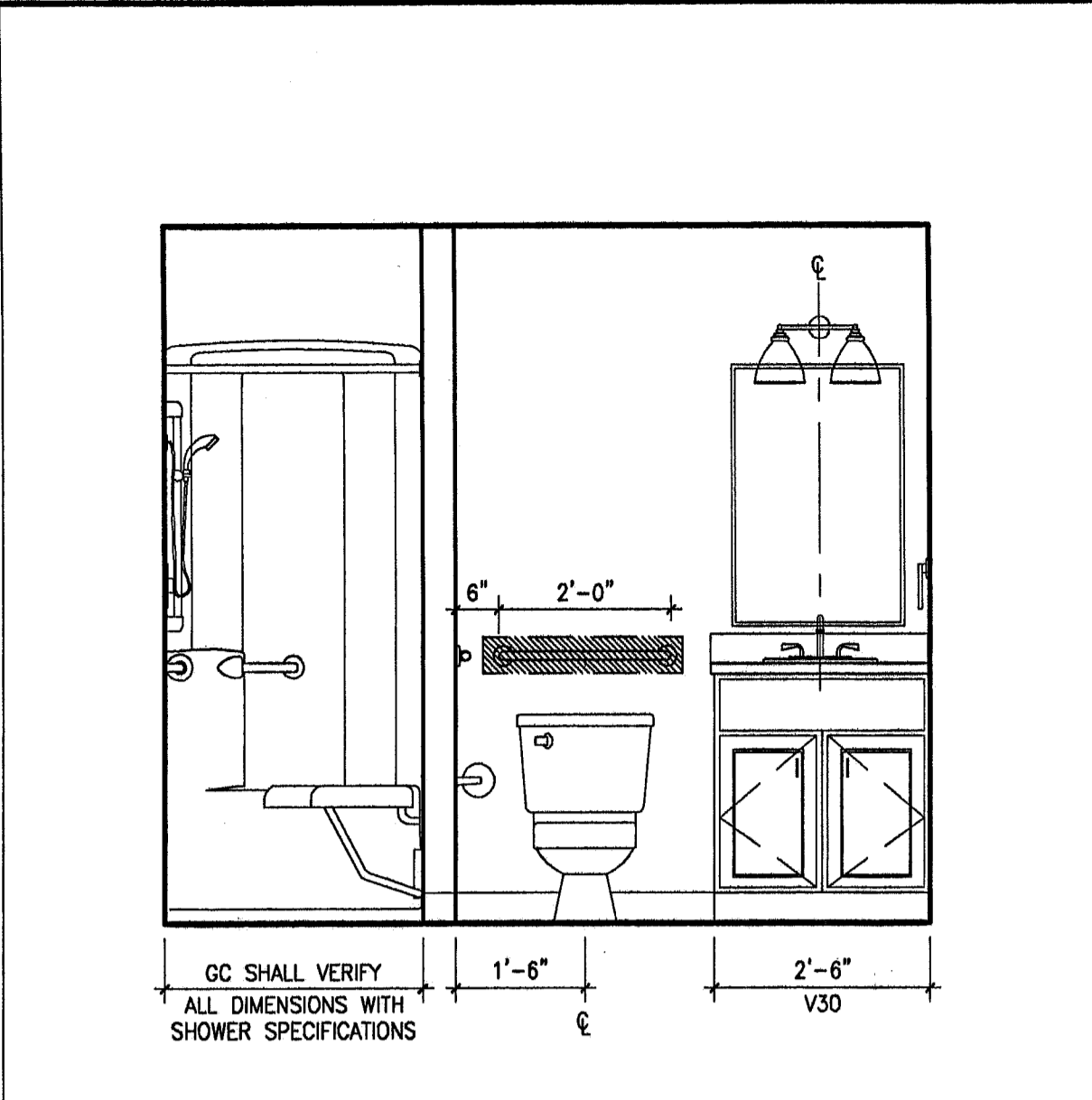
**SHEET TITLE**  
 INTERIOR ELEVATIONS

**A923**

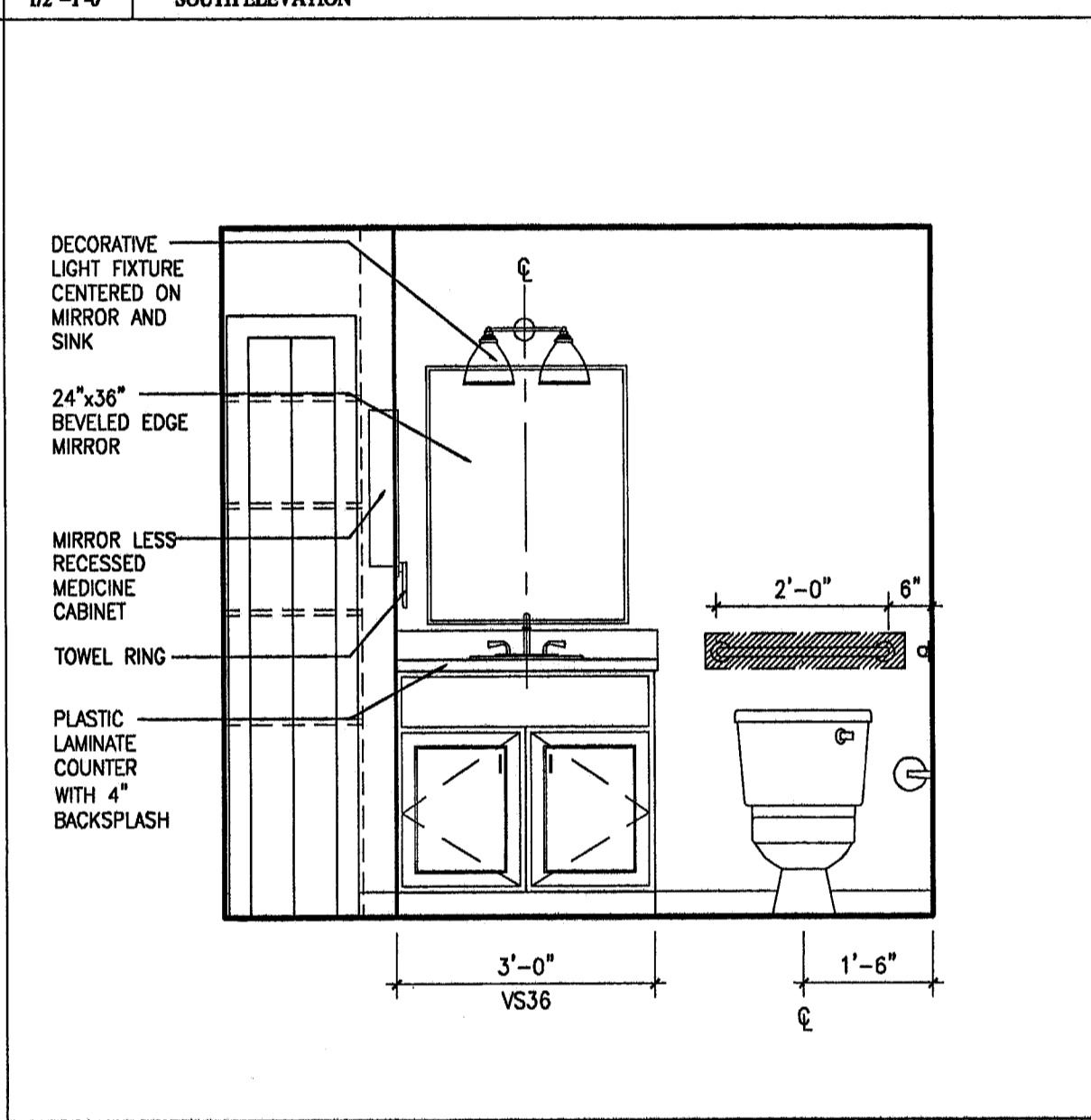
© COPYRIGHT 1985-2003  
 REPRODUCTION OR RESALE OF  
 THIS DOCUMENT WITHOUT  
 WRITTEN PERMISSION IS  
 GAWRON ARCHITECTS IS PROHIBITED

- NOTES:**
- KITCHEN AND VANITY CABINETRY:  
 ARMSTRONG WORLD INDUSTRIES, INC  
 PREMIER SERIES CASEWORK  
 DOOR STYLE: SIENA  
 FINISH: TOFFEE  
 HARDWARE: T8D  
 ADA UNIT 124- PROVIDE ARMSTRONG  
 UNIVERSAL ACCESS BASE CABINETS FOR THE  
 KITCHEN AND VANITY CABINETRY  
 8" RAISED TOE SPACE  
 32" HEIGHT CABINET  
 UPGRADE: PROVIDE DOVETAIL DRAWERS WITH  
 FULL EXTENSION DRAWER GLIDES AND WOOD  
 END PANELS  
 CROWN: 2" CROWN MOLDING WOOD AND  
 FINISH SHALL MATCH CABINET FINISH
  - TOILET ACCESSORIES:  
 CREATIVE SPECIALTIES INTERNATIONAL  
 THE DANBURY COLLECTION  
 FINISH: OIL RUBBED BRONZE  
 18" TOWEL BAR: DN67180RB  
 TOWEL RING: DN67880RB  
 PAPER HOLDER: DN67080RB  
 ROBE HOOK: DN67030RB
  - MEDICINE CABINET:  
 ARMSTRONG WORLD INDUSTRIES, INC  
 MCR1624  
 DOOR STYLE: SIENA  
 NON MIRROR DOOR  
 FINISH: TOFFEE
  - WASHER/DRYER UNIT DIMENSIONS BASED ON GE  
 UNIFIED SPACEMAKER WASHER AND DRYER.  
 GS SHALL VERIFY AND COORDINATE ALL  
 DIMENSIONS WITH OWNER SUPPLIED UNIT.
  - APPLIANCES PROVIDED BY OWNER. GC SHALL  
 VERIFY AND COORDINATE DIMENSIONS PRIOR  
 TO ORDERING AND INSTALLATION OF  
 CABINETRY.
  - WALL SAFES SHALL BE PROVIDED BY OWNER AND  
 INSTALLED BY GC. GC SHALL VERIFY AND  
 COORDINATE ALL DIMENSIONS PRIOR TO  
 INSTALLATION- REFER TO FLOOR PLAN FOR  
 LOCATIONS.
  - SHELVING/ ROD AND SHELF SYSTEM:  
 CLOSETMAID, A DIVISION OF CLARSON  
 INTERNATIONAL OR SCHULTE  
 UNIT CLOSETS: 12 INCH DEEP  
 LINEN CLOSETS: 15 INCH DEEP  
 PROVIDE VINYL COATED, ADJUSTABLE WIRE  
 SHELVING SYSTEM; SHELF WITH MATCHING  
 MOUNTING HARDWARE FOR ATTACHMENT TO  
 CONCEAL WOOD BLOCKING. GC SHALL  
 COORDINATE MOUNTING HEIGHT WITH OWNER.
  - GRAB BARS:  
 FRANKLIN BRASS; SAFETY FIRST  
 CUSTOM COLOR SERIES  
 COLOR: WHITE  
 BARS SHALL BE THERMOPLASTIC OR  
 RESIN-COATED STEEL, 1/2" DIAMETER, .064"  
 MINIMUM WALL THICKNESS WITH 1/2" THICK  
 FLANGES; CONCEAL FASTENER MOUNTING.  
 LENGTHS AND CONFIGURATION SHALL BE  
 INDICATED ON THE DRAWINGS.  
 GRAB BARS SHALL BE SCREWED TO SOLID  
 BLOCKING IN STUD PARTITIONS. INSTALL GRAB  
 BARS TO WITHSTAND A DOWNWARD LOAD OF  
 AT LEAST 250 LBF, WHEN TESTED ACCORDING  
 TO METHOD IN ASTM F 446.
  - CORNER GUARDS:  
 C/S ACROVYN, STYLE SM-10, BULLNOSE  
 EDGE, COLOR TO BE SELECTED FROM  
 ACROVYN STANDARD AND OPTIONAL COLORS,  
 MATCHING TOP AND BOTTOM CAPS, SURFACE  
 MOUNT ALUMINUM RETAINER.  
 CONTACT: METRO ARCH SALES COMPANY,  
 781-545-8100  
 QUANTITY: 75
  - SIGNAGE:  
 NEW ROOM AND DIRECTORY SIGNAGE SHALL  
 MATCH EXISTING SIGNAGE.  
 INTERIOR PLATE SIGNS MESSAGE INSERT SIGNS:  
 SUBSTRATE: FABRICATE SIGNS FROM 1/2" THICK  
 MATTE CLEAR ACRYLIC WITH 1/2" BEVELED  
 BACKER PLATE. BACKER PLATE TO SIT ON 1/2"  
 CUSTOM CUT WHITE MAPLE PANEL STAINED TO  
 MATCH INTERIOR DECOR STAIN. EDGES  
 MECHANICALLY AND SMOOTHLY FINISHED TO  
 ELIMINATE CUT MARKS. BACKGROUND COLOR  
 TO BE SUBSURFACE DESIGN OF SIGN.  
 ASSEMBLY: SANDWICH TWO EXACT SIZED  
 ACRYLIC PIECES WITH FOAM TAPE AS DIVIDERS.  
 FACE PLATE TO HAVE CLEAR WINDOWS FOR  
 MESSAGE INSERTS.  
 BACKGROUND COLOR: TBS BY ARCHITECT  
 EDGES: STRAIGHT  
 CORNERS: AS INDICATED  
 SIZE: AS INDICATED  
 COPY: HELVETICA  
 COPY COLOR: TBS BY ARCHITECT  
 LETTERFORM: APPLY 1/8" COMPUTER PRECISION  
 CUT TACTILE COPY. ALL UPPERCASE, NORMAL  
 SPACING. 1/8" MINIMUM LETTER HEIGHT. TACTILE  
 LETTERS WILL BE APPLIED IN A MANNER THAT  
 AVOIDS SCORING OF THE SIGN'S SURFACE AT  
 BASE OF TACTILE LETTERS.  
 BRAILLES: USE RASTER PROCESS TO CREATE  
 ALL BRAILLE CELLS. DRILL HOLES IN EACH  
 DOT LOCATION AND FIT CLEAR RASTER BALLS  
 INTO EACH HOLE.  
 DIRECTORIES:  
 SHALL MATCH INTERIOR PLATE SIGNS
  - STAIR:  
 CROWN HERITAGE, CLASSIC WOOD STAIRS  
 SERIES  
 PAINTED TO MATCH TRIM

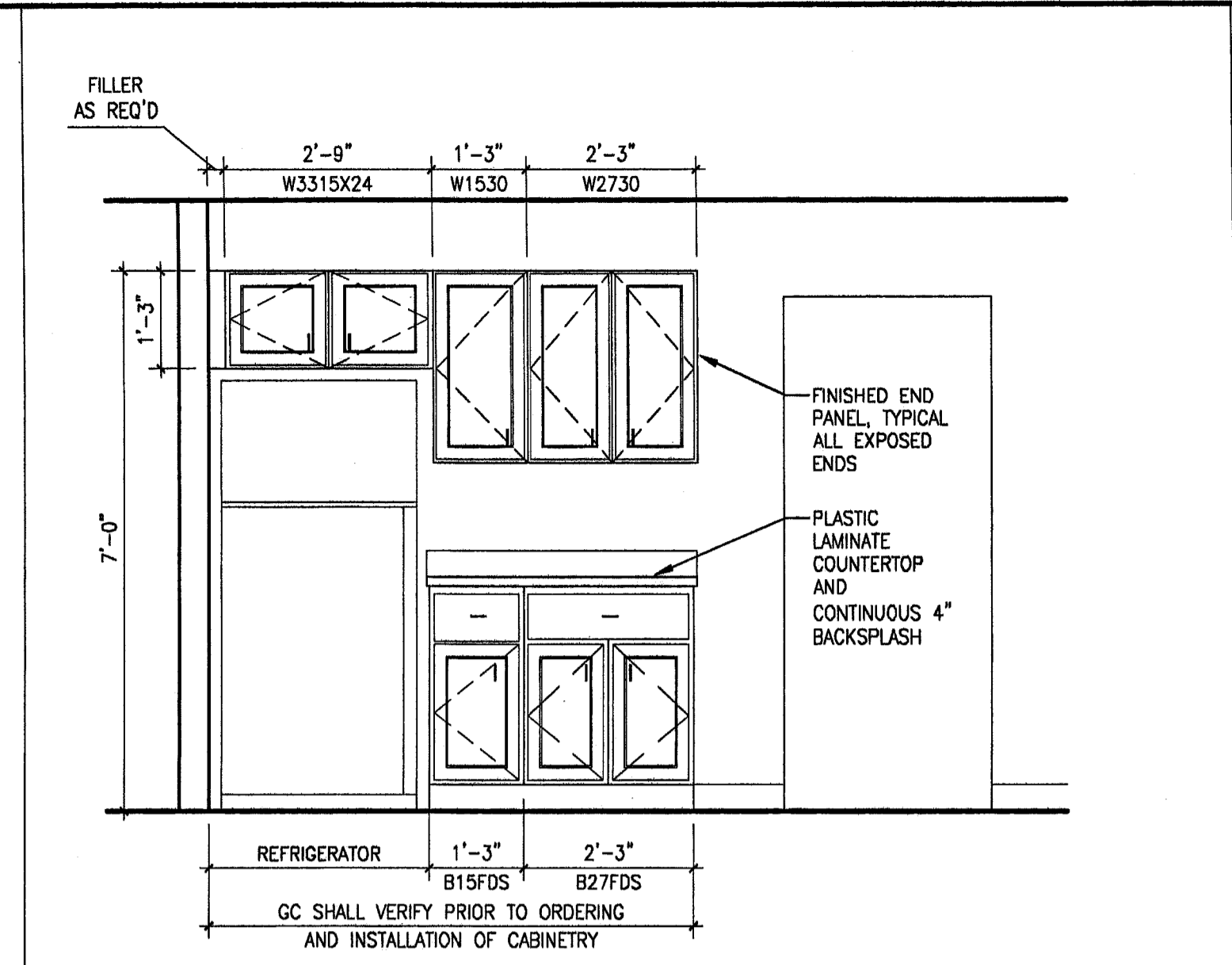
**2/2/07 PERMIT SET**



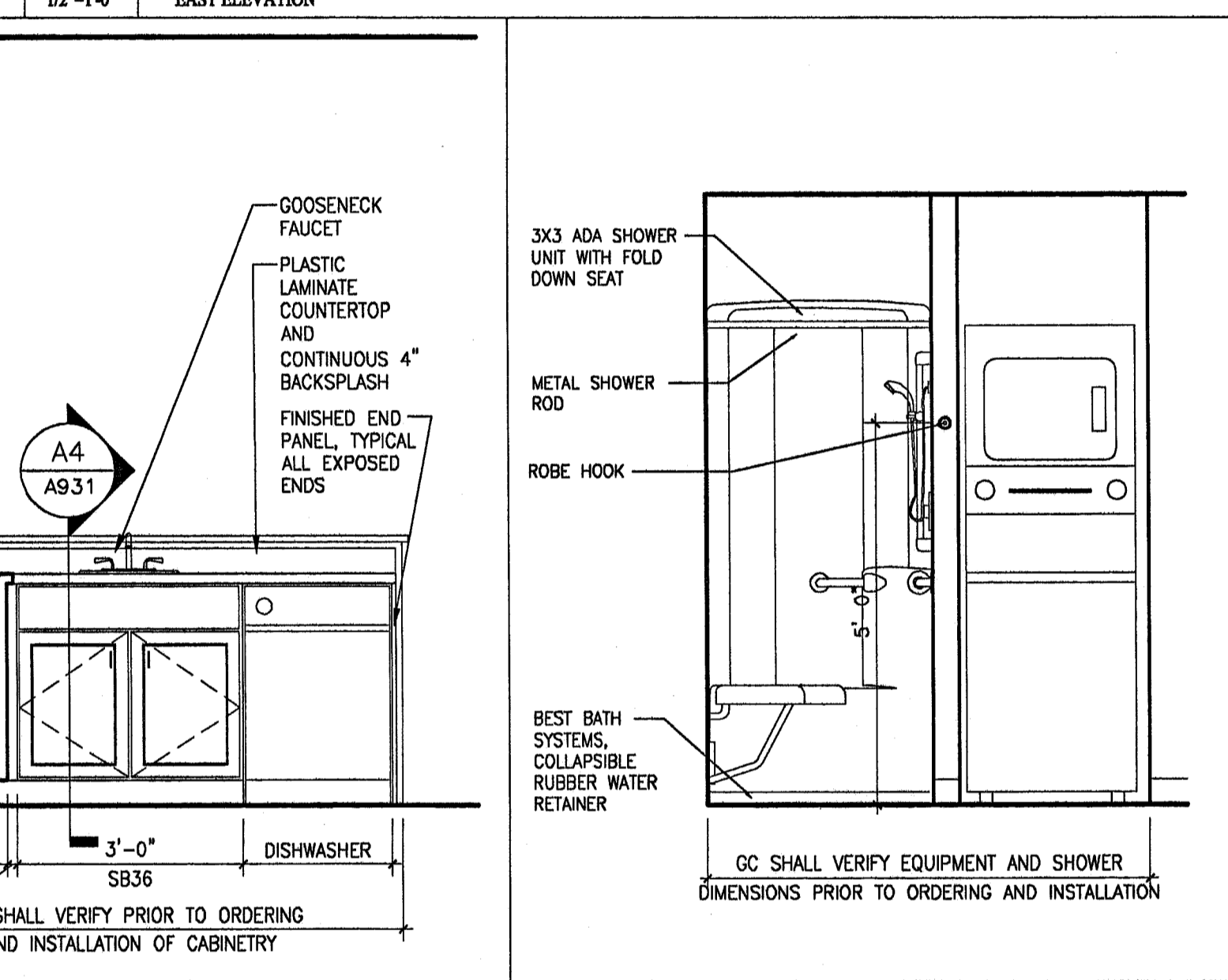
**M15 UNIT 249- BATHROOM**  
 SOUTH ELEVATION



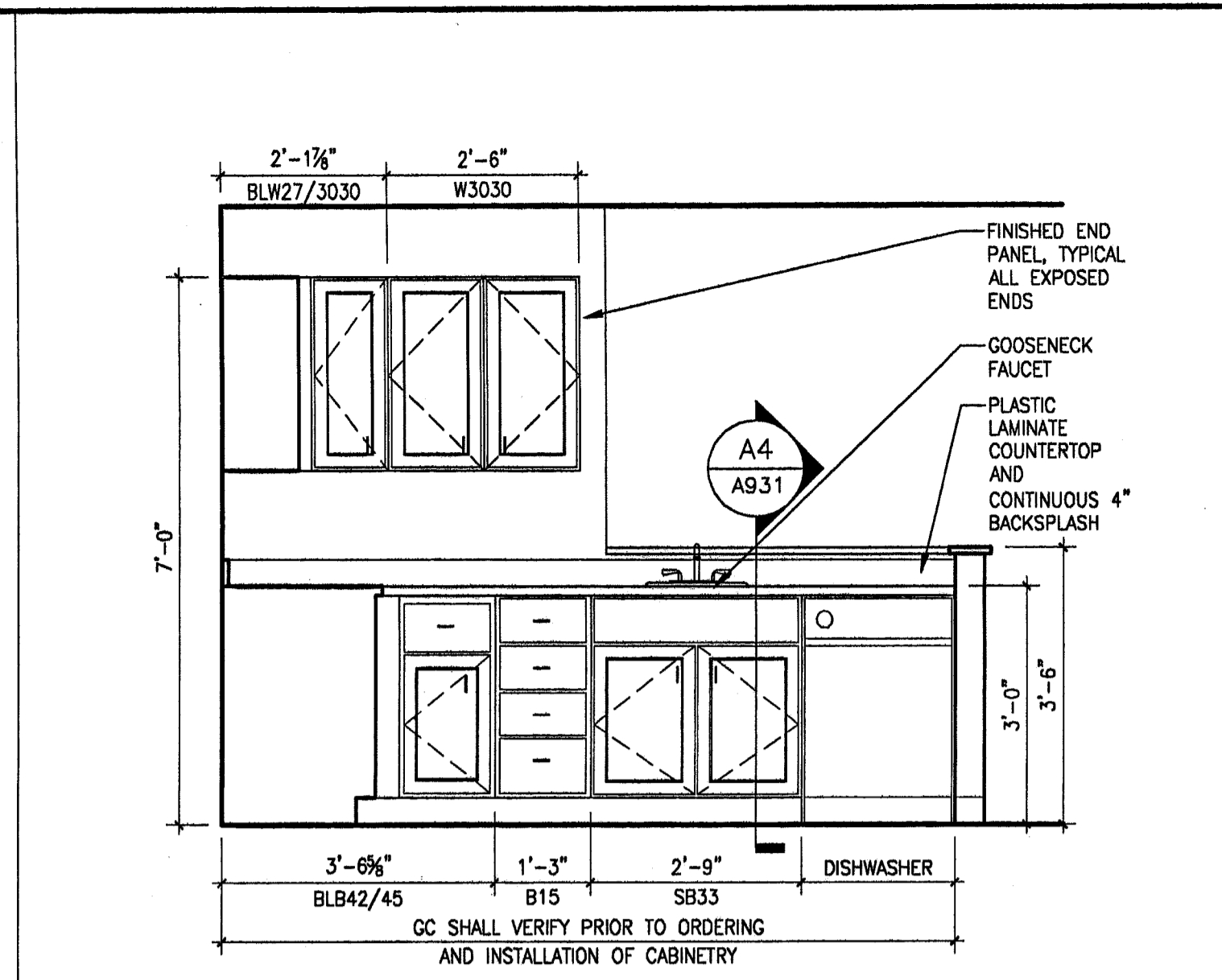
**M15 UNIT 249- BATHROOM**  
 SOUTH ELEVATION



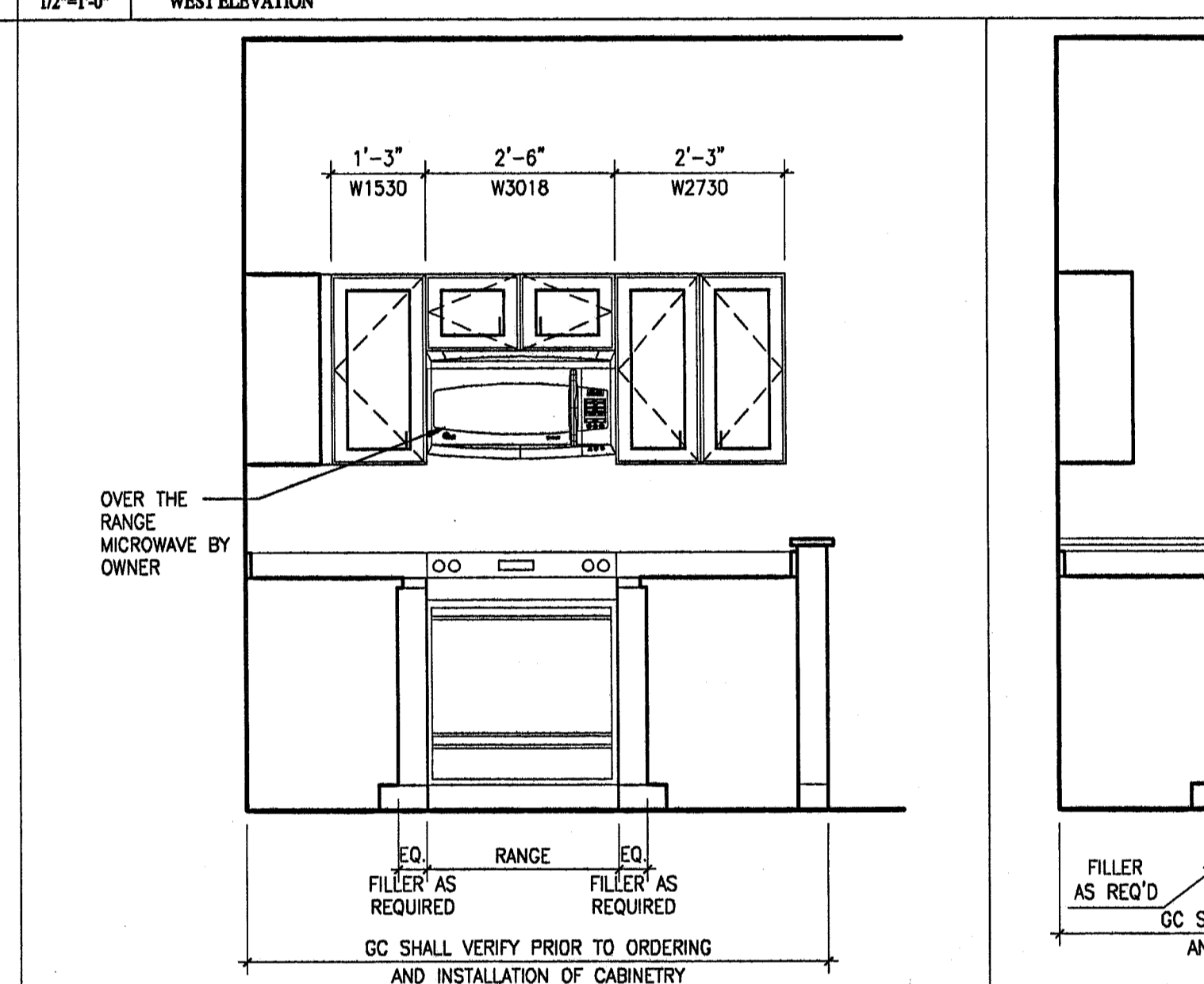
**M10 UNIT 249- KITCHEN**  
 EAST ELEVATION



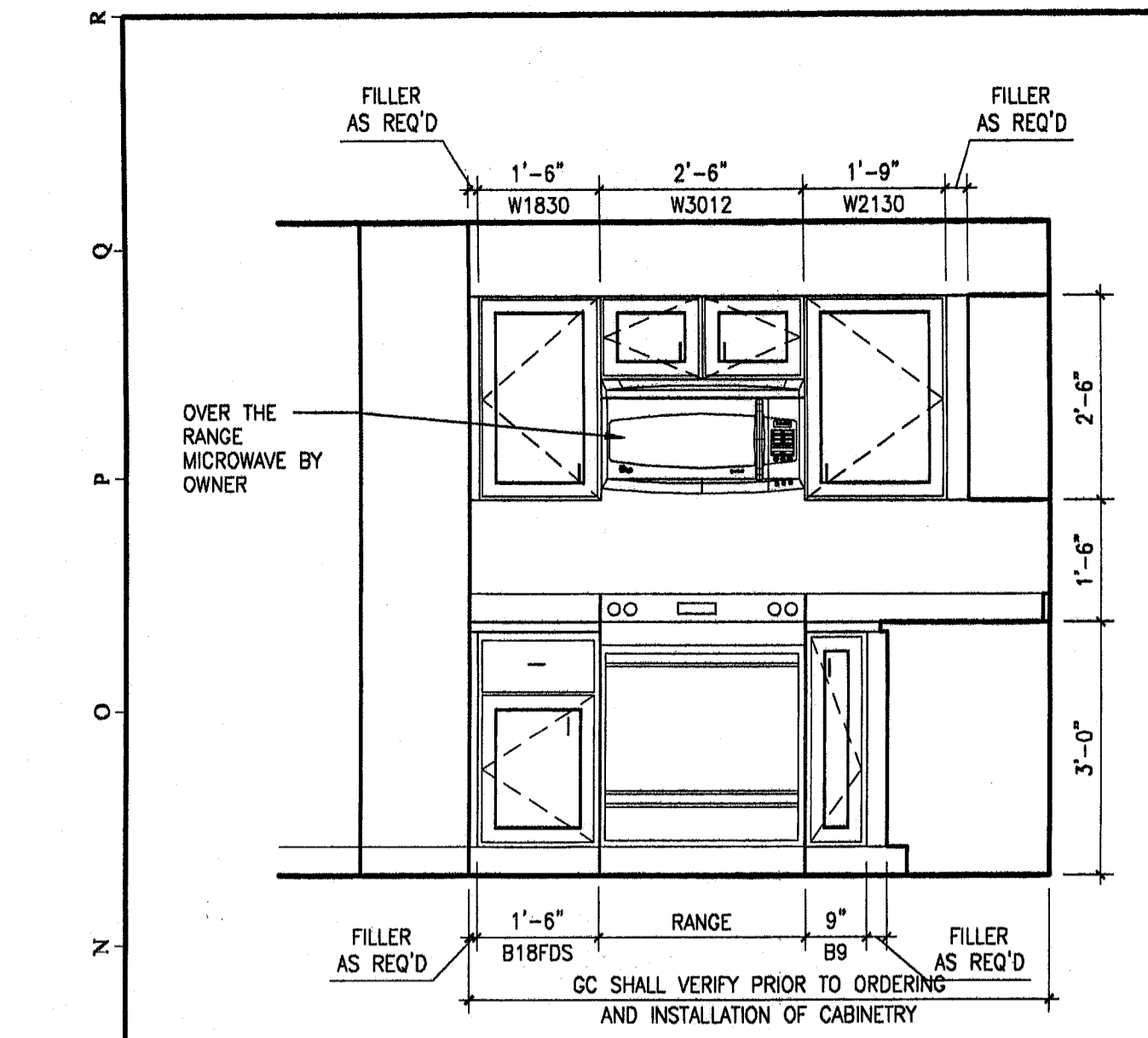
**M10 UNIT 249- KITCHEN**  
 EAST ELEVATION



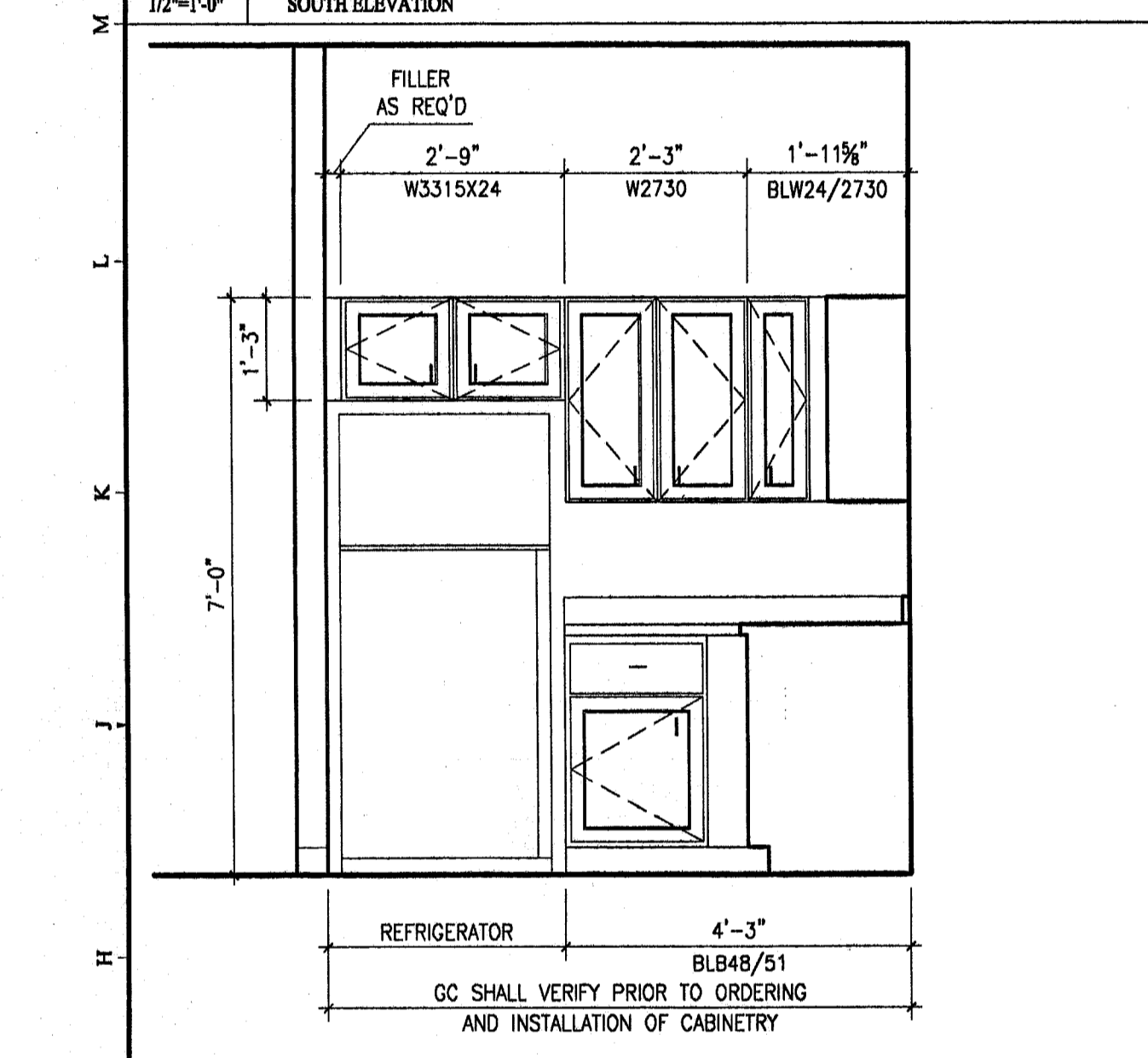
**M5 UNIT 249- KITCHEN**  
 WEST ELEVATION



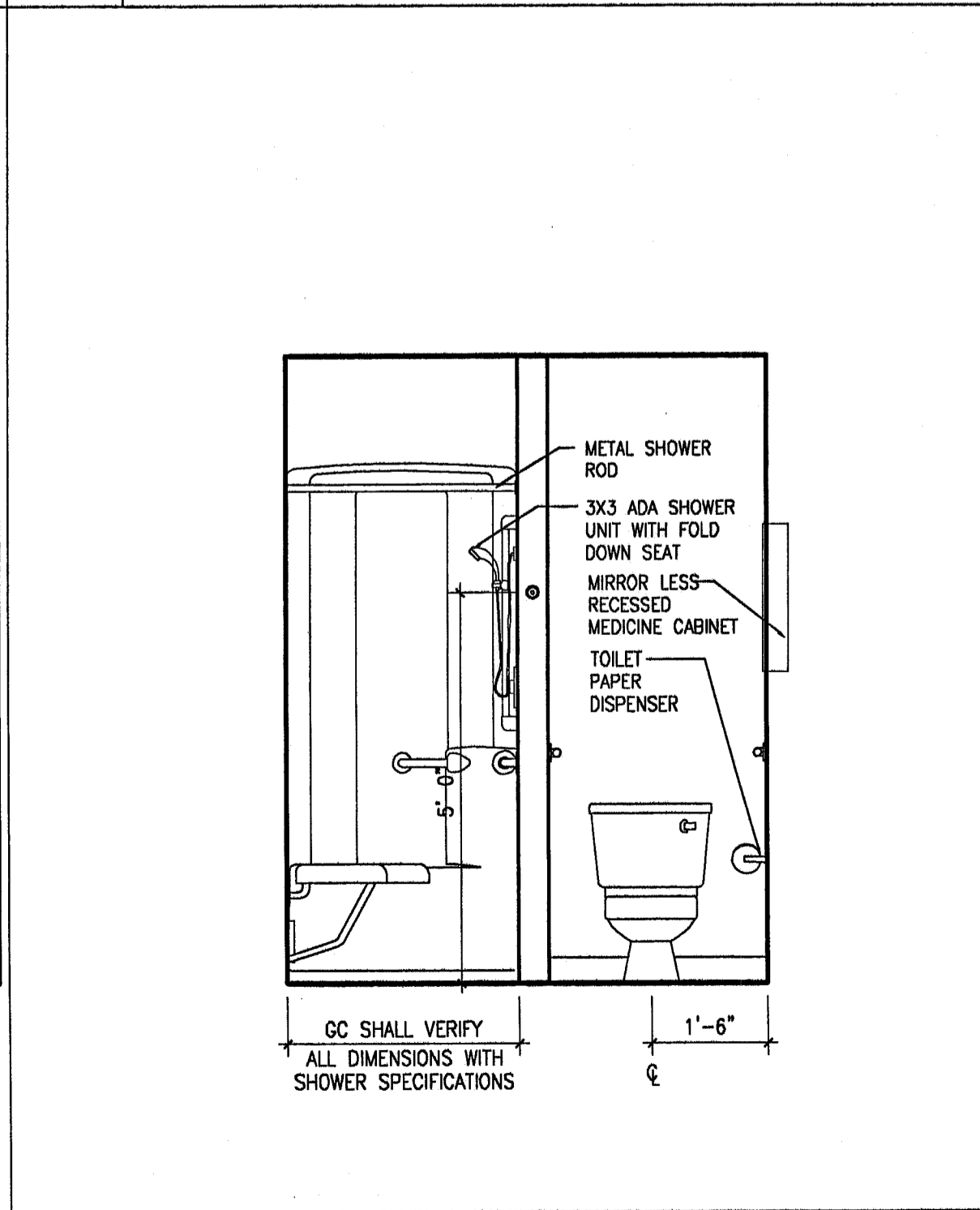
**M5 UNIT 249- KITCHEN**  
 WEST ELEVATION



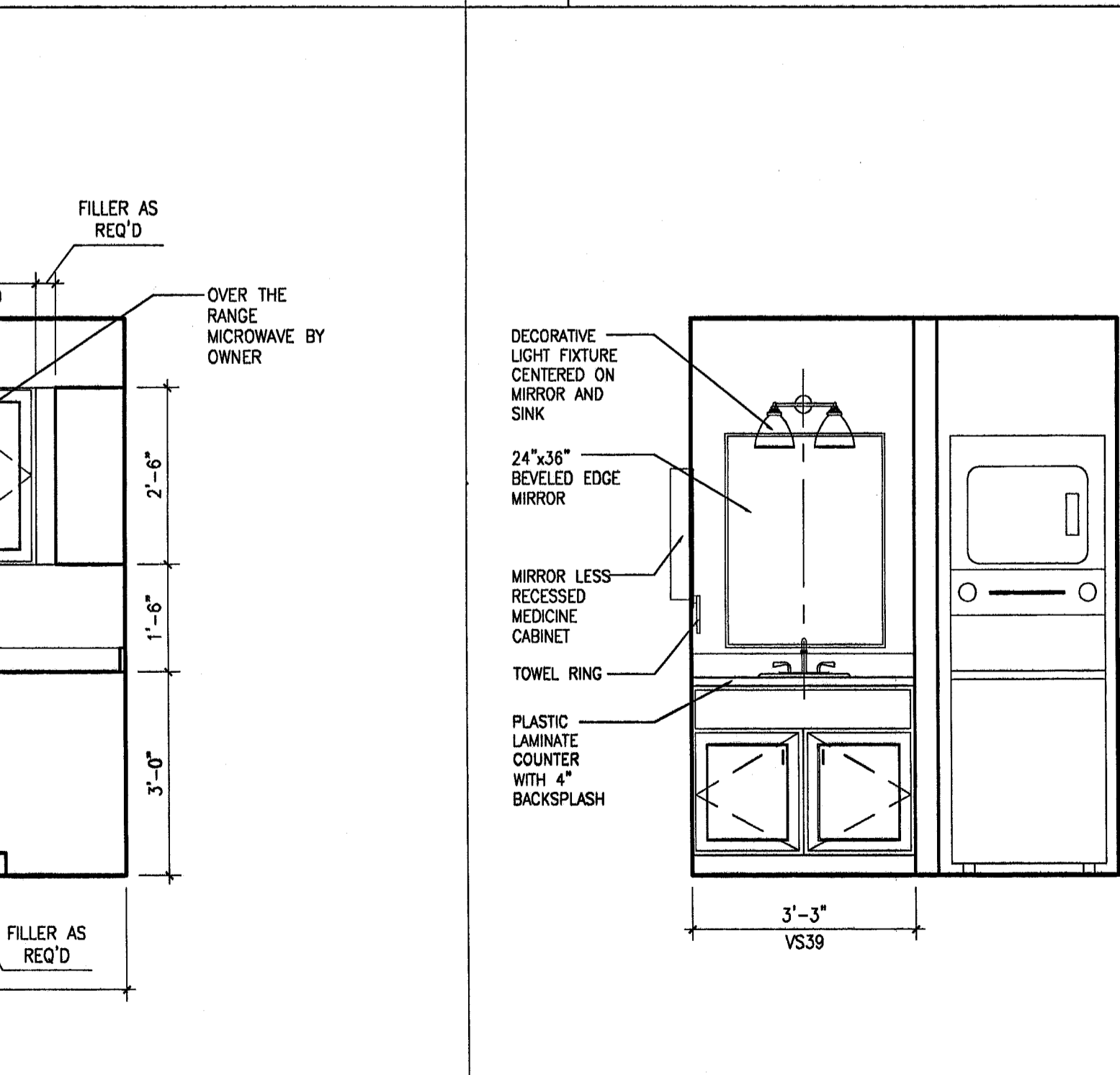
**M1 UNIT 249- KITCHEN**  
 SOUTH ELEVATION



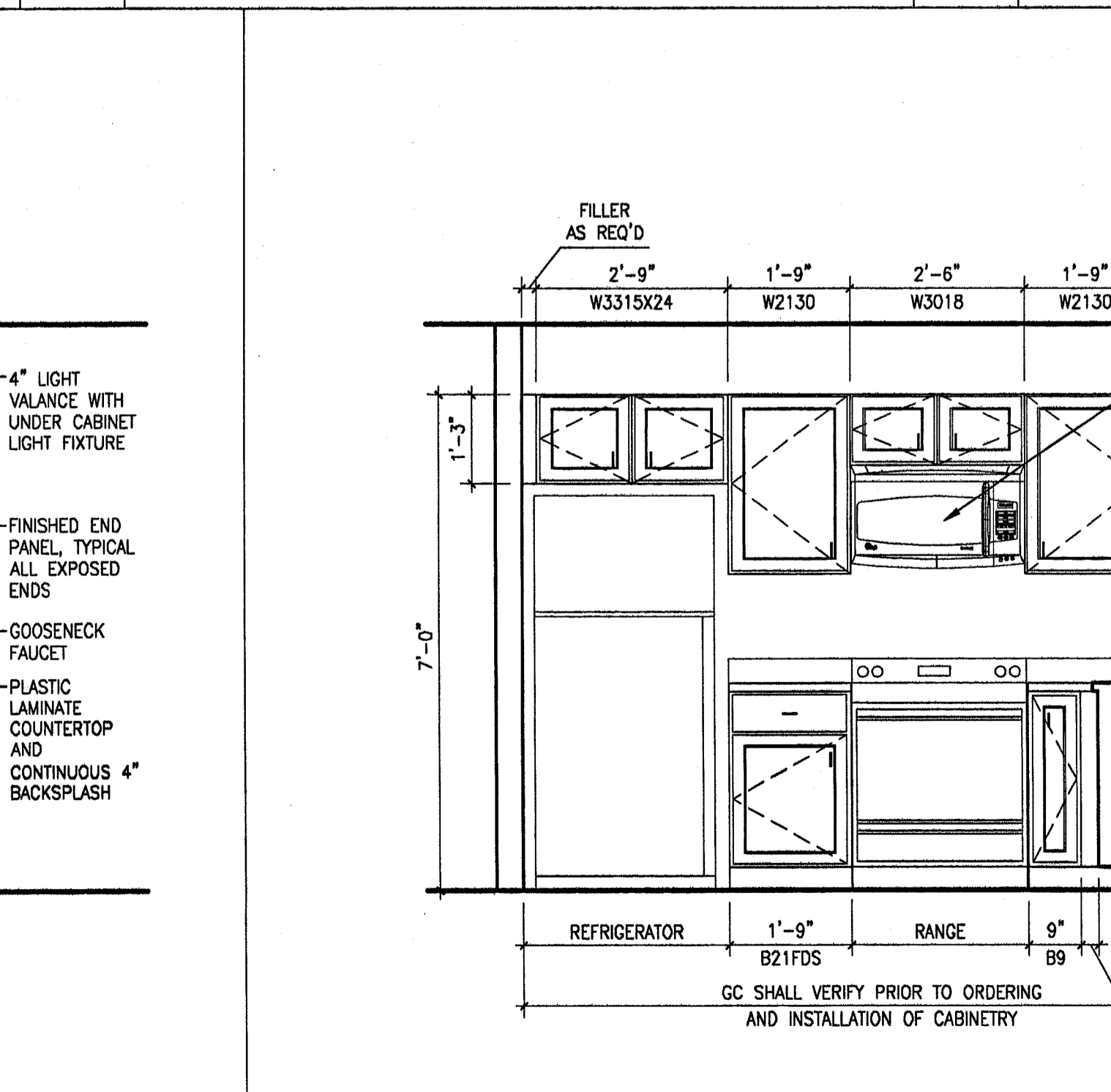
**M1 UNIT 249- KITCHEN**  
 SOUTH ELEVATION



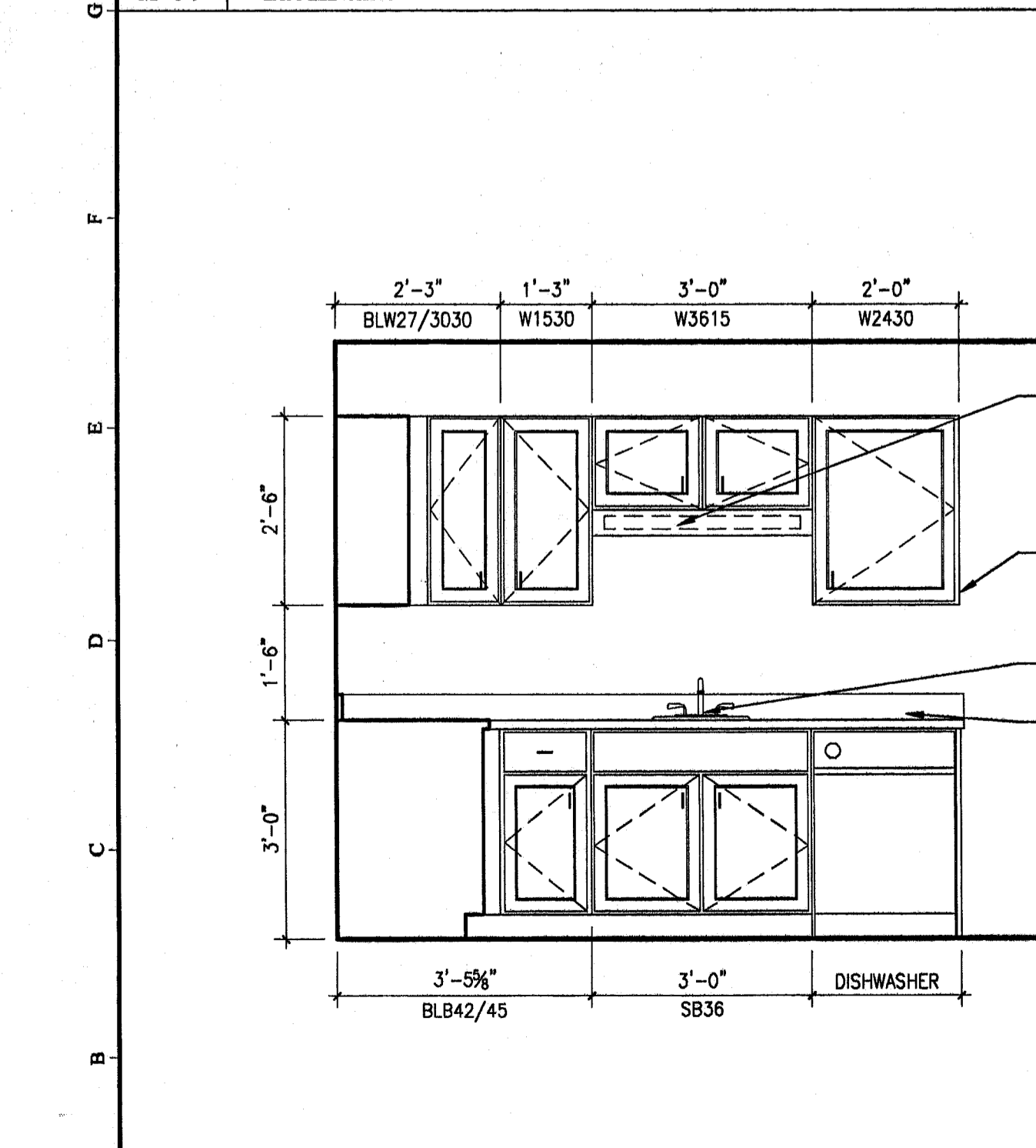
**A15 UNIT 251- BATHROOM**  
 EAST ELEVATION



**A12 UNIT 251- BATHROOM**  
 WEST ELEVATION



**A6 UNIT 251- KITCHEN**  
 NORTH ELEVATION



**A1 UNIT 251- KITCHEN**  
 EAST ELEVATION