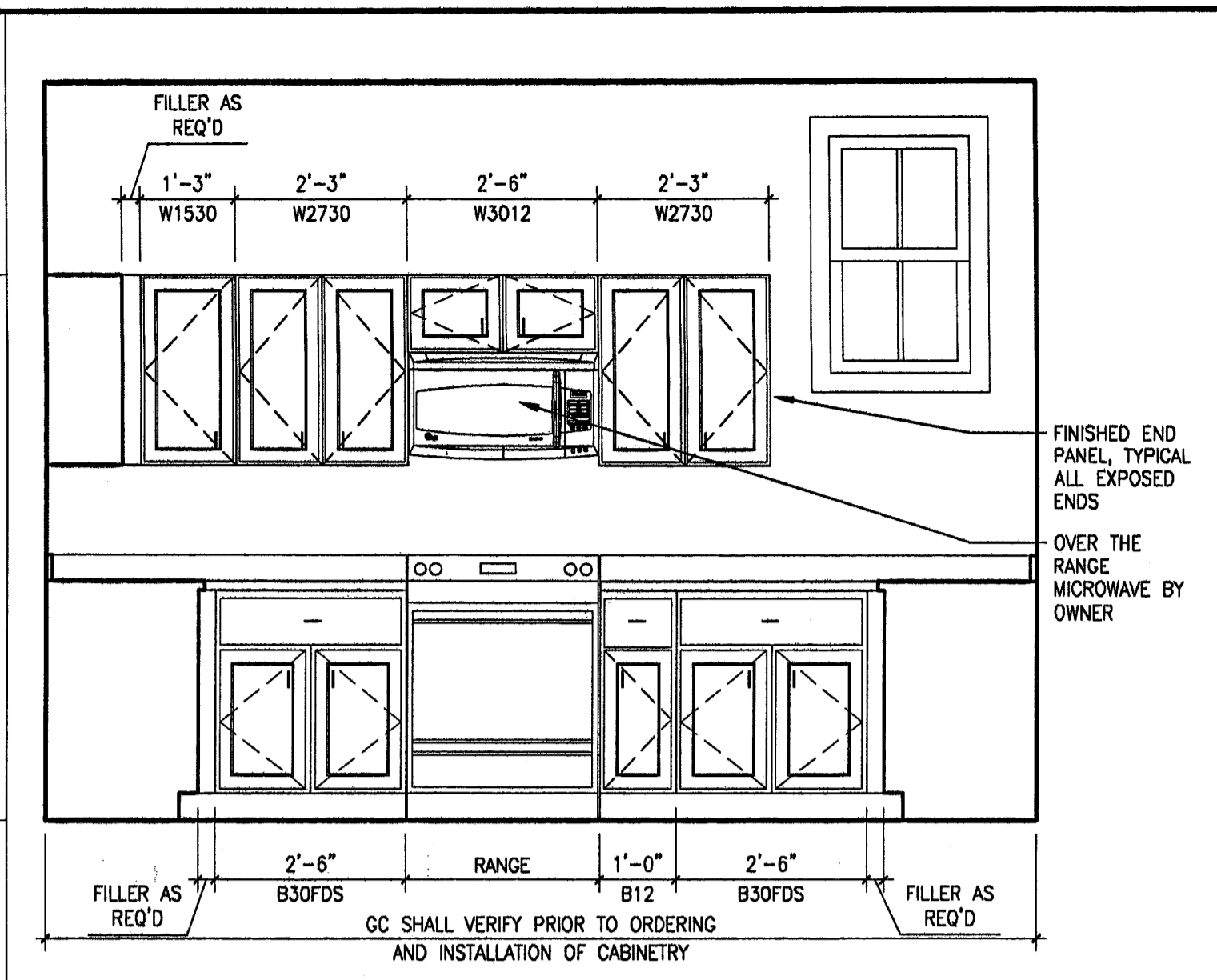
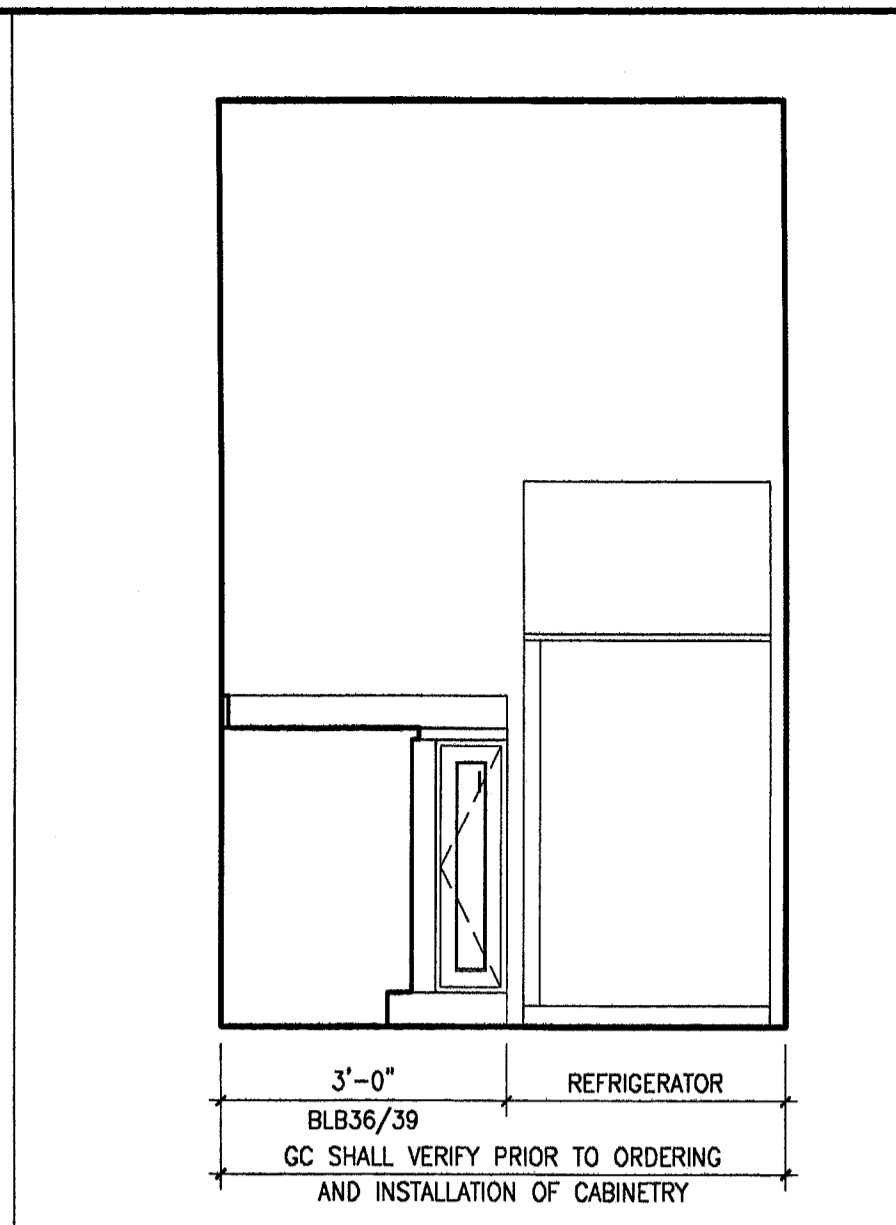


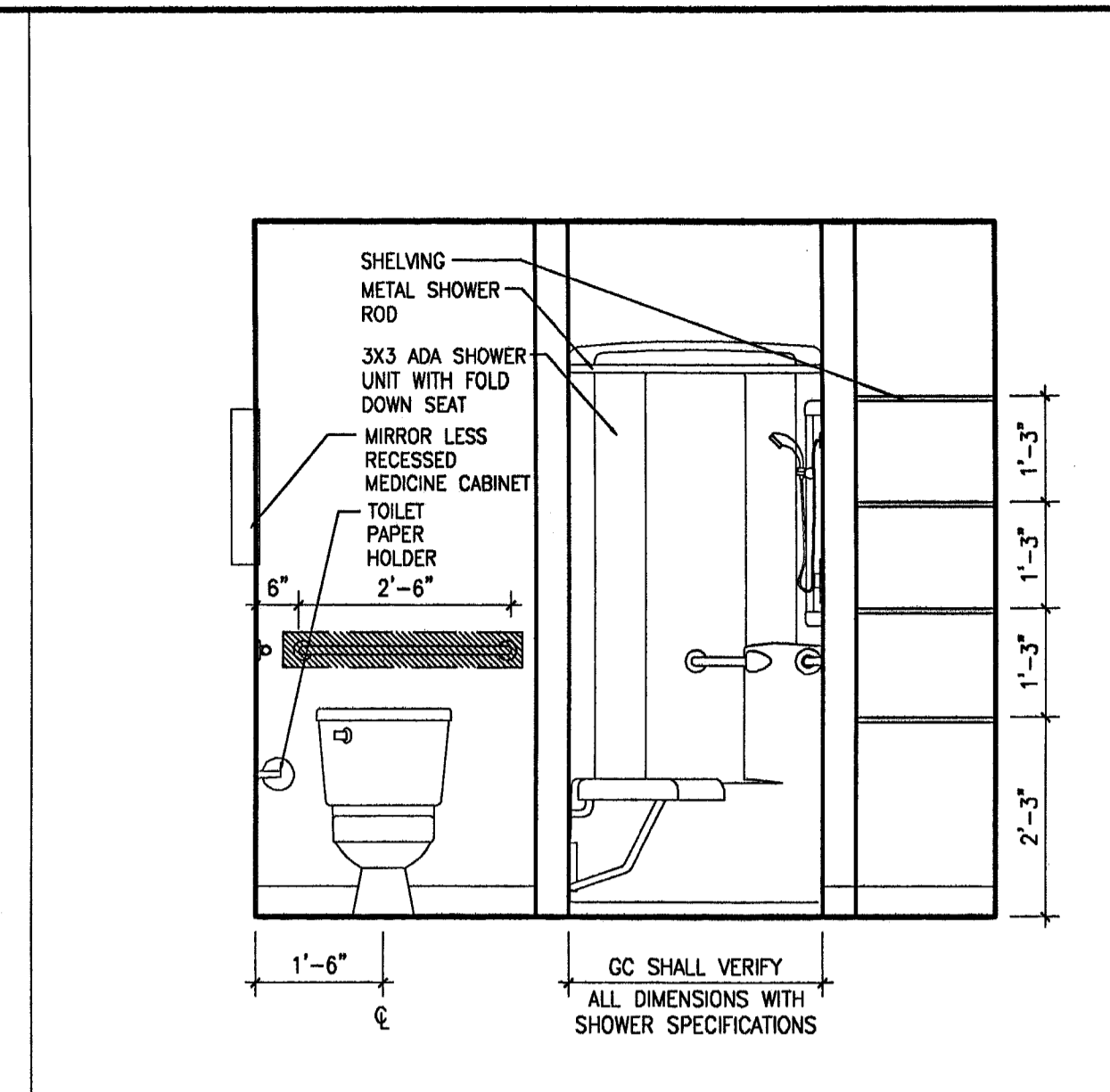
M1 UNIT 125- KITCHEN
1/2"-1/4" SOUTH ELEVATION



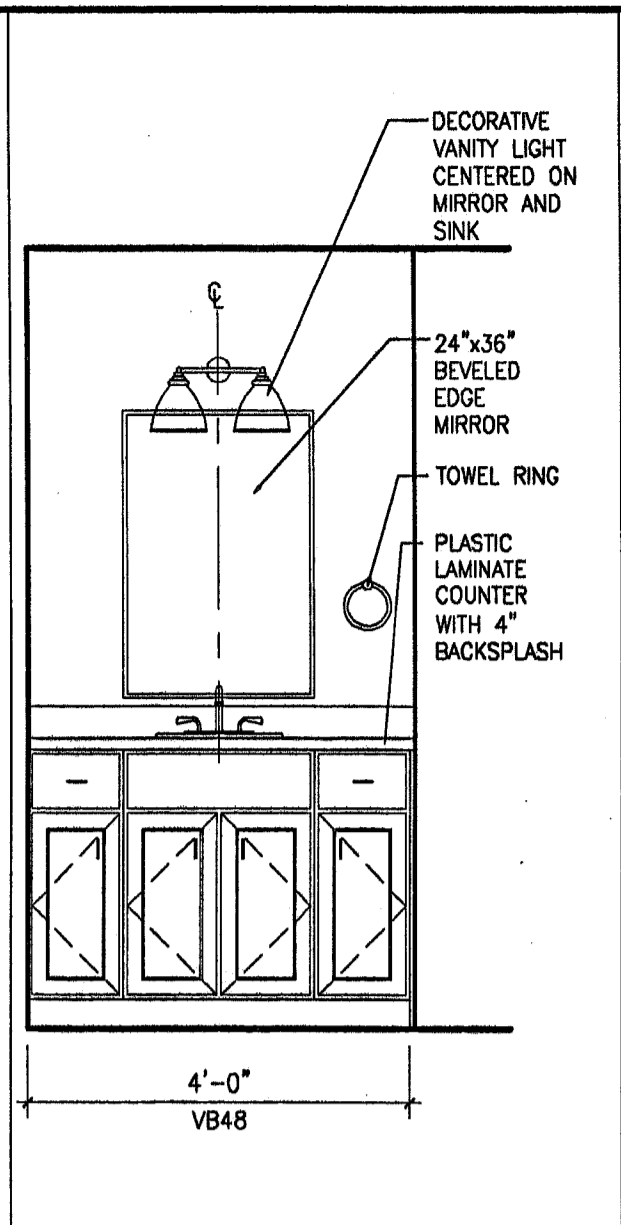
M5 UNIT 125- KITCHEN
1/2"-1/4" WEST ELEVATION



M10 UNIT 125- KITCHEN
1/2"-1/4" NORTH ELEVATION

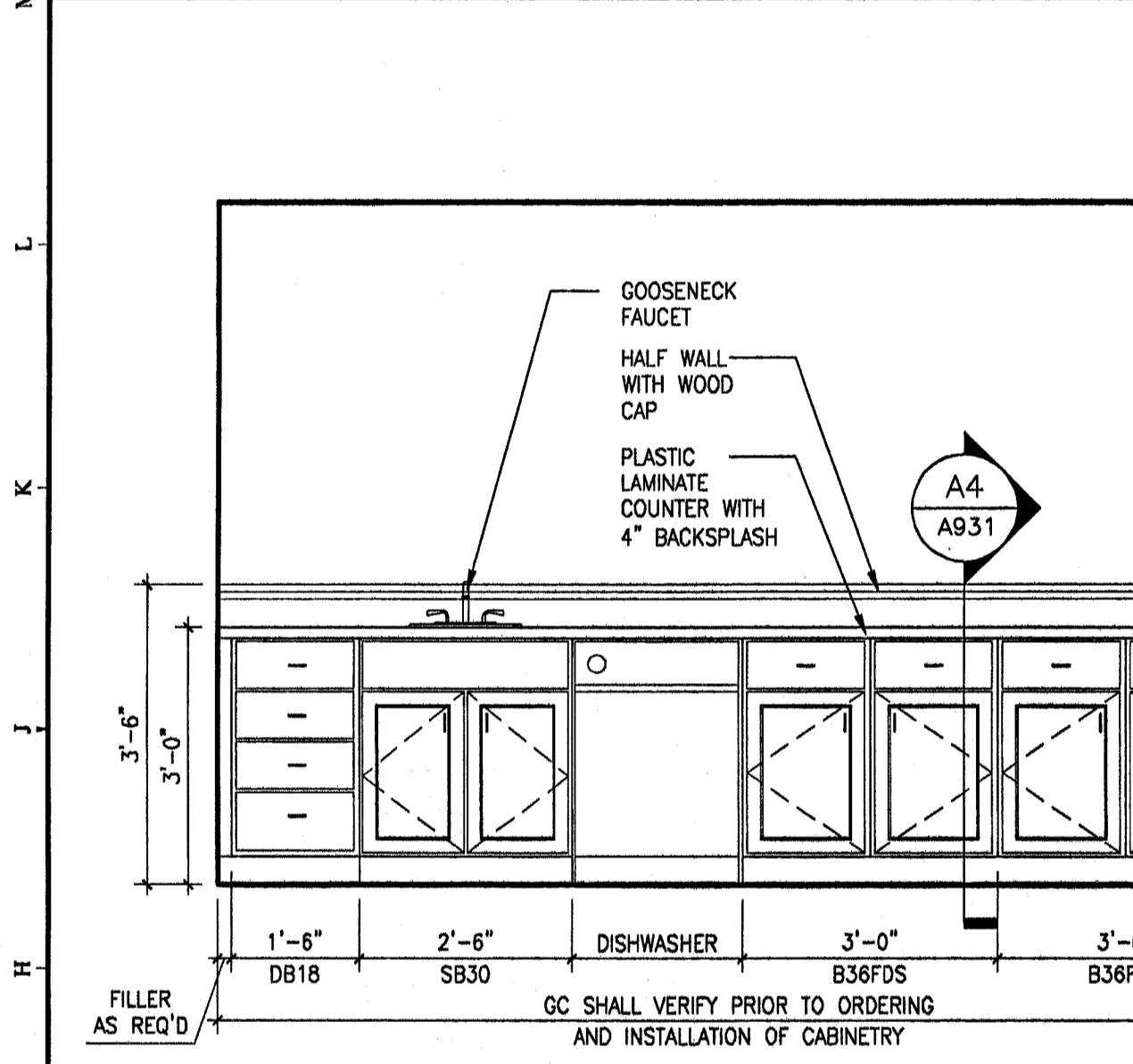


M13 UNIT 125- BATHROOM
1/2"-1/4" WEST ELEVATION

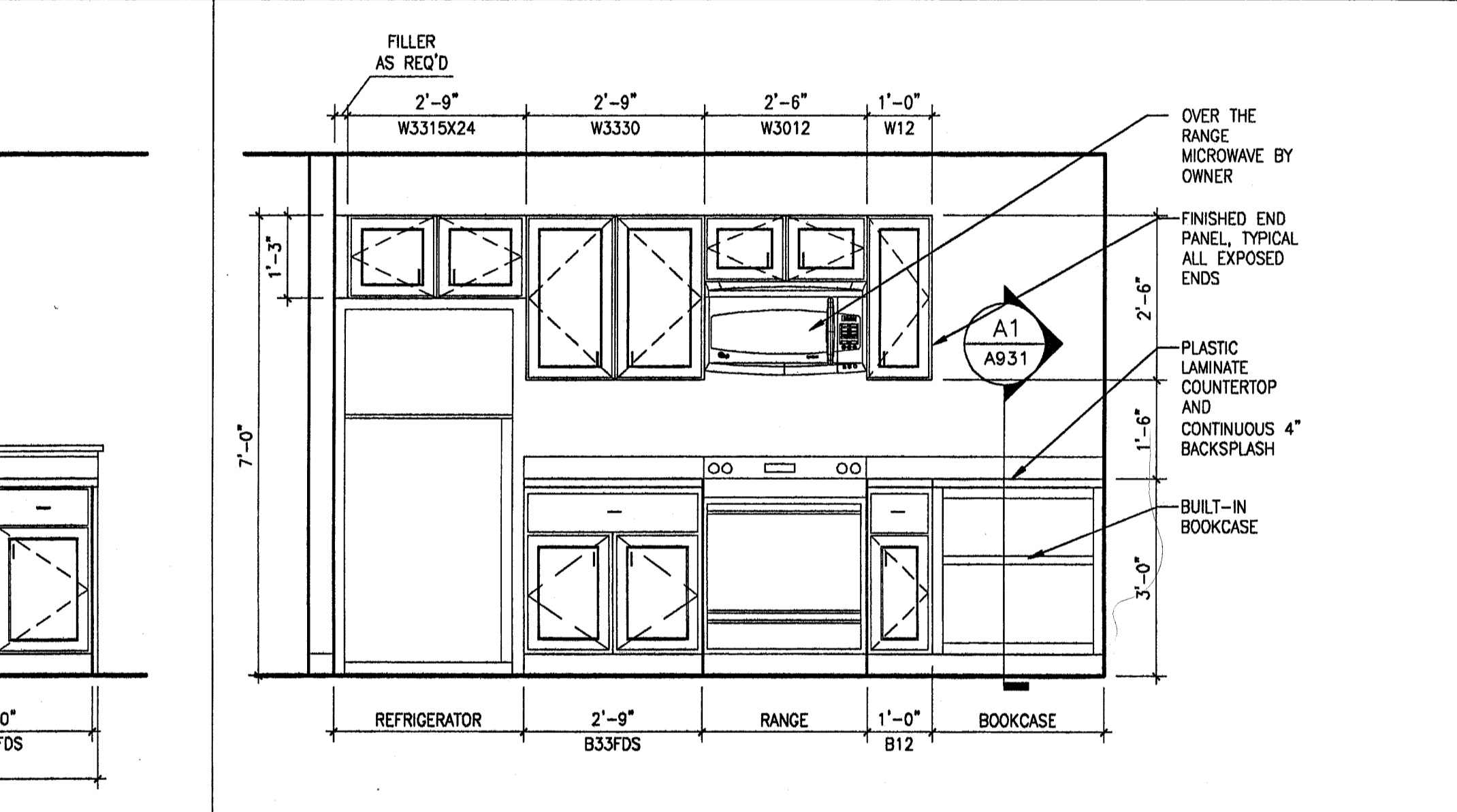


M17 UNIT 125
1/2"-1/4" BATHROOM-EAST ELEVATION

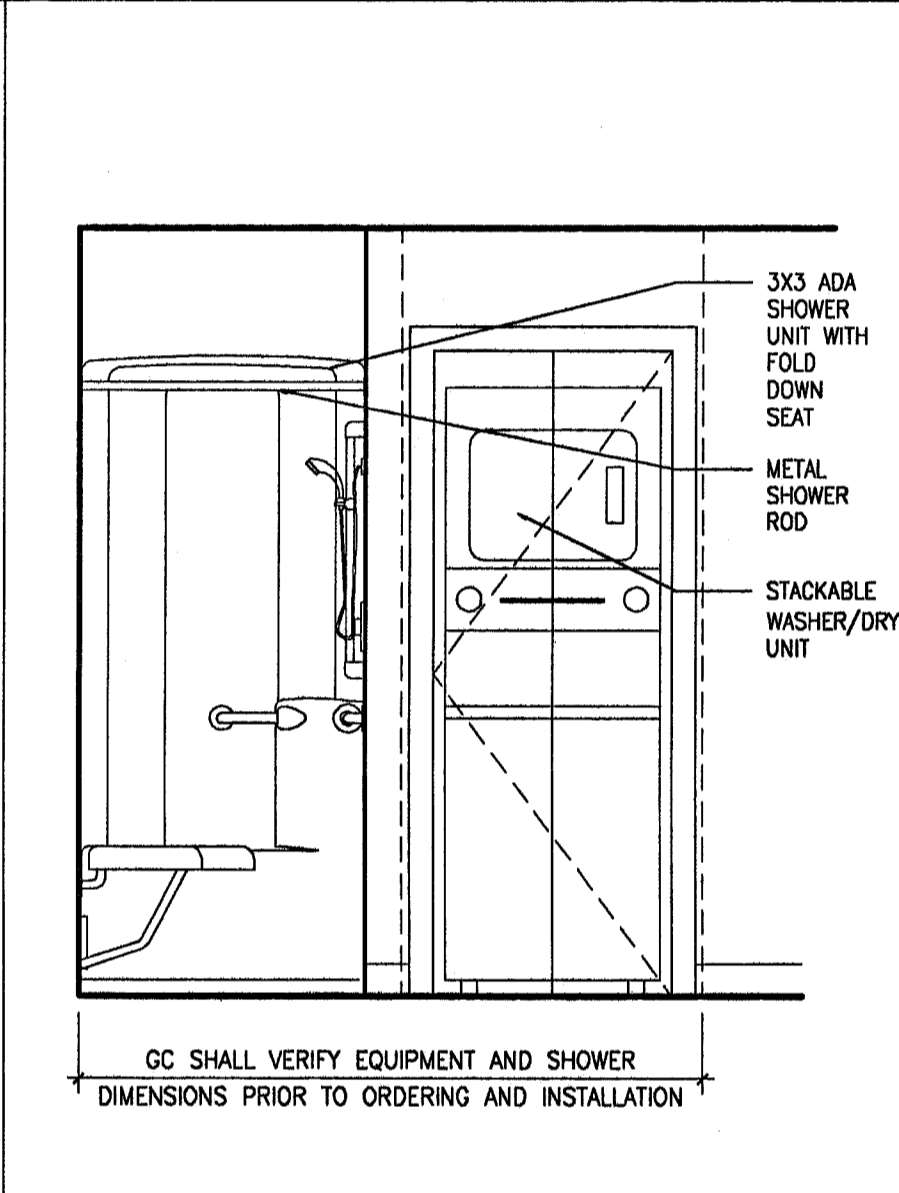
- NOTES:**
- KITCHEN AND VANITY CABINERY: ARMSTRONG WORLD INDUSTRIES, INC PREMIER SERIES CASEWORK DOOR STYLE: SIENA FINISH: TOFFEE HARDWARE: T8D
ADA UNIT 124- PROVIDE ARMSTRONG UNIVERSAL ACCESS BASE CABINETS FOR THE KITCHEN AND VANITY CABINERY
8 1/2" RAISED TOE SPACE
32" HEIGHT CABINET
UPGRADE: PROVIDE DOVETAIL DRAWERS WITH FULL EXTENSION DRAWER GLIDES AND WOOD END PANELS
CROWN: 2" CROWN HOLDING WOOD AND FINISH SHALL MATCH CABINET FINISH
 - TOILET ACCESSORIES: CREATIVE SPECIALTIES INTERNATIONAL THE DANBURY COLLECTION FINISH: OIL RUBBED BRONZE 18" TOWEL BAR: DN67180RB TOWEL RING: DN5780ORB PAPER HOLDER: DN57080RB ROBE HOOK: DN67030RB
 - MEDICINE CABINET: ARMSTRONG WORLD INDUSTRIES, INC MCR1624 DOOR STYLE: SIENA NON MIRROR DOOR FINISH: TOFFEE
 - WASHER/DRYER UNIT DIMENSIONS BASED ON GE UNITIZED SPACEMAKER WASHER AND DRYER. GS SHALL VERIFY AND COORDINATE ALL DIMENSIONS WITH OWNER SUPPLIED UNIT.
 - APPLIANCES PROVIDED BY OWNER. GC SHALL VERIFY AND COORDINATE DIMENSIONS PRIOR TO ORDERING AND INSTALLATION OF CABINERY.
 - WALL SAFES SHALL BE PROVIDED BY OWNER AND INSTALLED BY GC. GC SHALL VERIFY AND COORDINATE ALL DIMENSIONS PRIOR TO INSTALLATION- REFER TO FLOOR PLAN FOR LOCATIONS.
 - SHELVING/ ROD AND SHELF SYSTEM: CLOSETMAID, A DIVISION OF CLARSON INTERNATIONAL OR SCHULTE INTERNATIONAL OR SCHULTE INTERNATIONAL CLOSETS: 12 INCH DEEP LINEN CLOSETS: 15 INCH DEEP
PROVIDE VINYL COATED, ADJUSTABLE WIRE SHELVING SYSTEM, SHELF WITH MATCHING MOUNTING HARDWARE FOR ATTACHMENT TO CONCEAL WOOD BLOCKING. GC SHALL COORDINATE MOUNTING HEIGHT WITH OWNER.
 - GRAB BARS: FRANKLIN BRASS; SAFETY FIRST CUSTOM COLOR SERIES COLOR: WHITE BARS SHALL BE THERMOPLASTIC OR RESIN-COATED STEEL, 1 1/4" DIAMETER, .064" MINIMUM WALL THICKNESS WITH 3/8" THICK FLANGES; CONCEAL FASTENER MOUNTING. LENGTHS AND CONFIGURATION SHALL BE INDICATED ON THE DRAWINGS.
GRAB BARS SHALL BE SCREWED TO SOLID BLOCKING IN STUD PARTITIONS. INSTALL GRAB BARS TO WITHSTAND A DOWNWARD LOAD OF AT LEAST 250 LBF, WHEN TESTED ACCORDING TO METHOD IN ASTM F 446.
 - CORNER GUARDS: C/S ACROVYN, STYLE SM-10, BULLNOSE EDGE, COLOR TO BE SELECTED FROM ACROVYN STANDARD AND OPTIONAL COLORS, MATCHING TOP AND BOTTOM CAPS, SURFACE MOUNT ALUMINUM RETAINER. CONTACT: METRO ARCH SALES COMPANY, 781-345-8100 QUANTITY: 75
 - SIGNAGE: NEW ROOM AND DIRECTORY SIGNAGE SHALL MATCH EXISTING SIGNAGE.



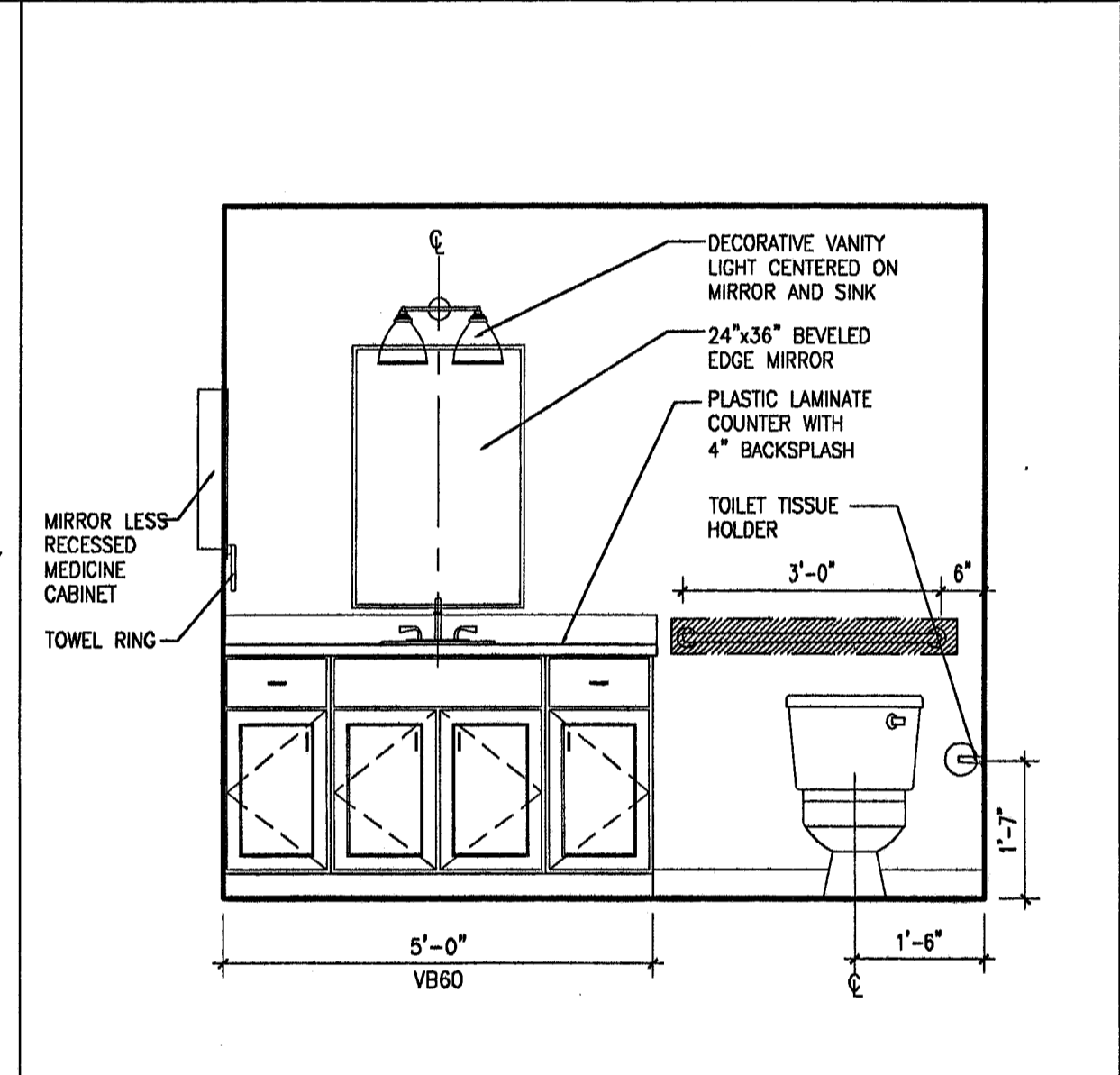
G1 UNIT 247- KITCHEN
1/2"-1/4" EAST ELEVATION



G6 UNIT 247- KITCHEN
1/2"-1/4" WEST ELEVATION

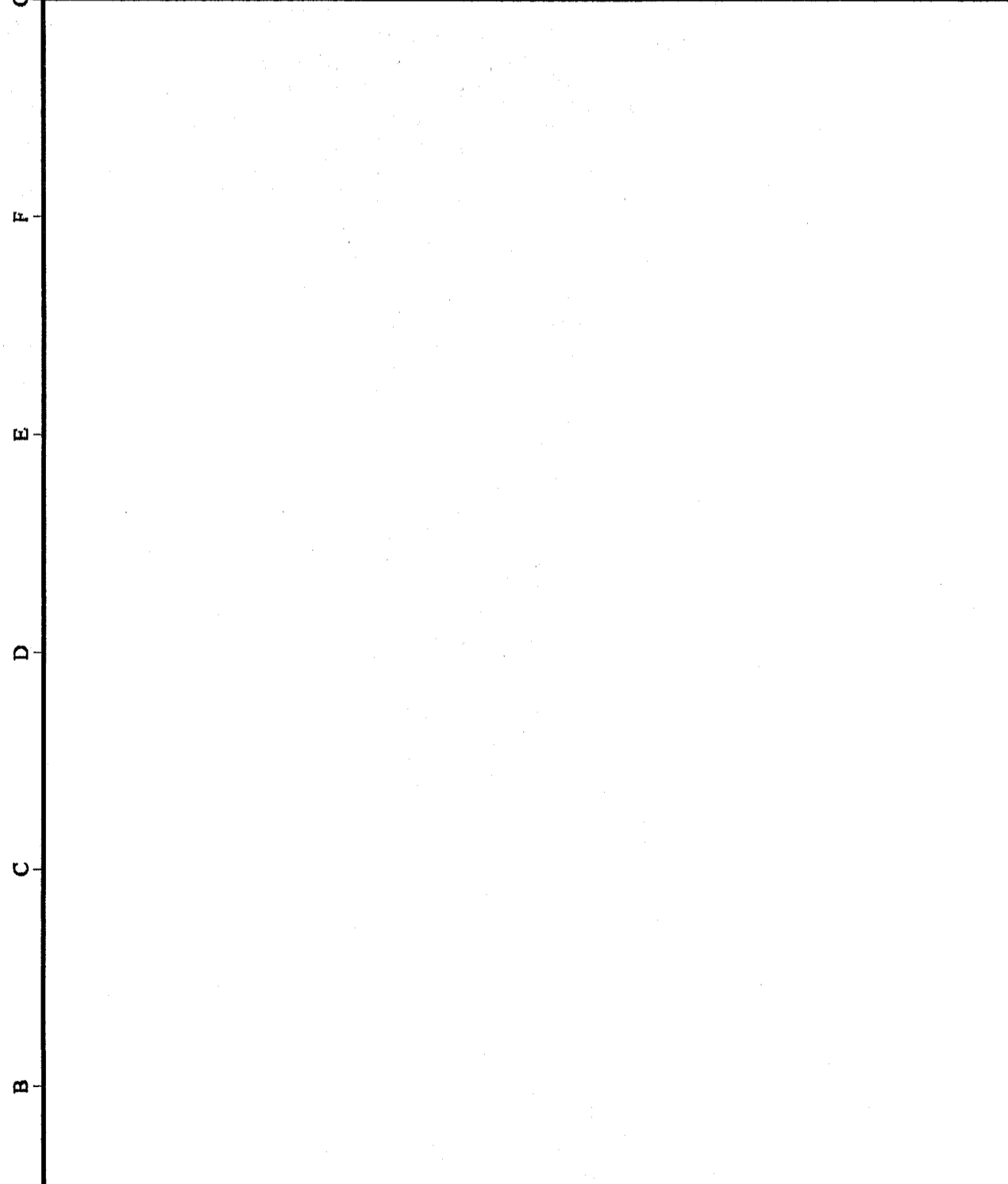


G12 UNIT 247- BATHROOM
1/2"-1/4" EAST ELEVATION

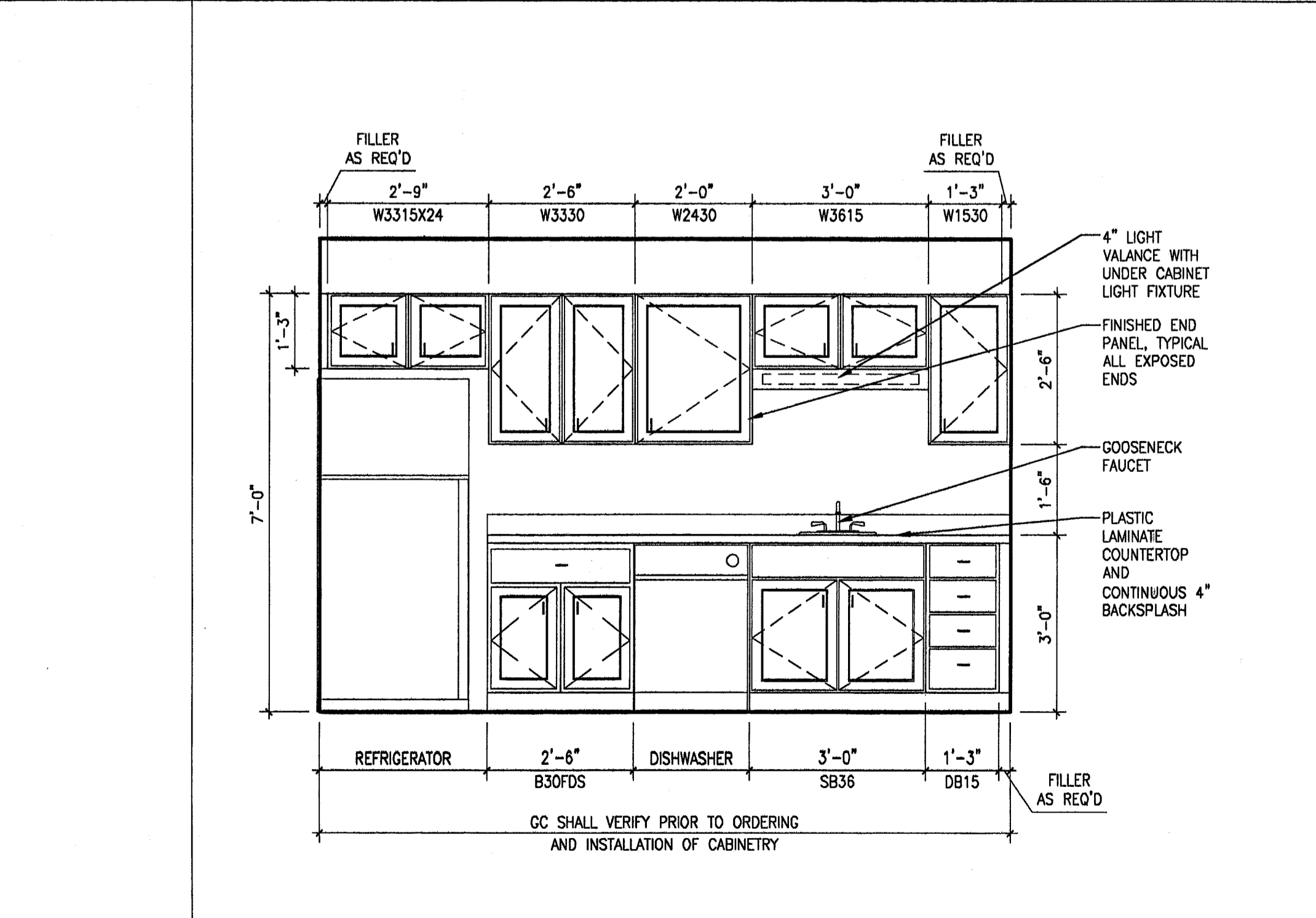


G15 UNIT 247- BATHROOM
1/2"-1/4" WEST ELEVATION

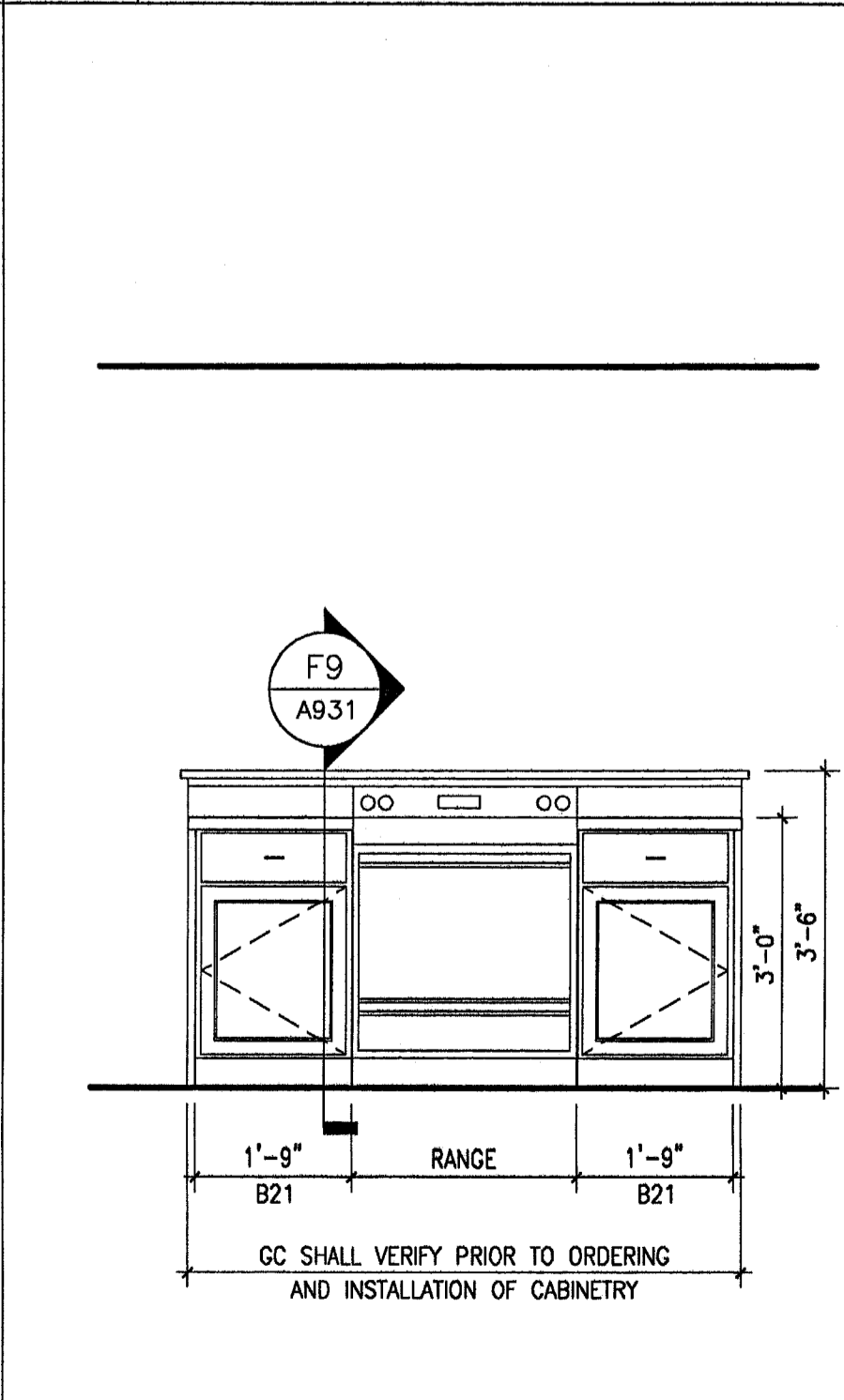
- INTERIOR PLATE SIGNS MESSAGE INSERT SIGNS: SUBSTRATE: FABRICATE SIGNS FROM 1/2" THICK MATTE CLEAR ACRYLIC WITH 1/2" BEVELED BACKER PLATE. BACKER PLATE TO SIT ON 1/2" CUSTOM CUT WHITE MAPLE PANEL STAINED TO MATCH INTERIOR DECOR STAIN. EDGES MECHANICALLY AND SMOOTHLY FINISHED TO ELIMINATE CUT MARKS. BACKGROUND COLOR TO BE SUBSURFACE DESIGN OF SIGN. ASSEMBLY: SANDWICH TWO EXACT SIZED ACRYLIC PIECES WITH FOAM TAPE AS DIVIDERS. FACE PLATE TO HAVE CLEAR WINDOWS FOR MESSAGE INSERTS. BACKGROUND COLOR: TBS BY ARCHITECT EDGES: STRAIGHT CORNERS: AS INDICATED SIZE: AS INDICATED COPY: HELVETICA COPY COLOR: TBS BY ARCHITECT LETTERFORM: APPLY 3/8" COMPUTER PRECISION CUT TACTILE COPY. ALL UPPER CASE, NORMAL SPACING, 1/2" MINIMUM LETTER HEIGHT. TACTILE LETTERS WILL BE APPLIED IN A MANNER THAT AVOIDS SCORING OF THE SIGN'S SURFACE AT BASE OF TACTILE LETTERS. BRAILLE: USE RASTER PROCESS TO CREATE ALL BRAILLE CELLS. DRILL HOLES IN EACH DOT LOCATION AND FIT CLEAR RASTER BALLS INTO EACH HOLE.
- DIRECTORIES: SHALL MATCH INTERIOR PLATE SIGNS
- STAIR: CROWN HERITAGE, CLASSIC WOOD STAIRS SERIES PAINTED TO MATCH TRIM



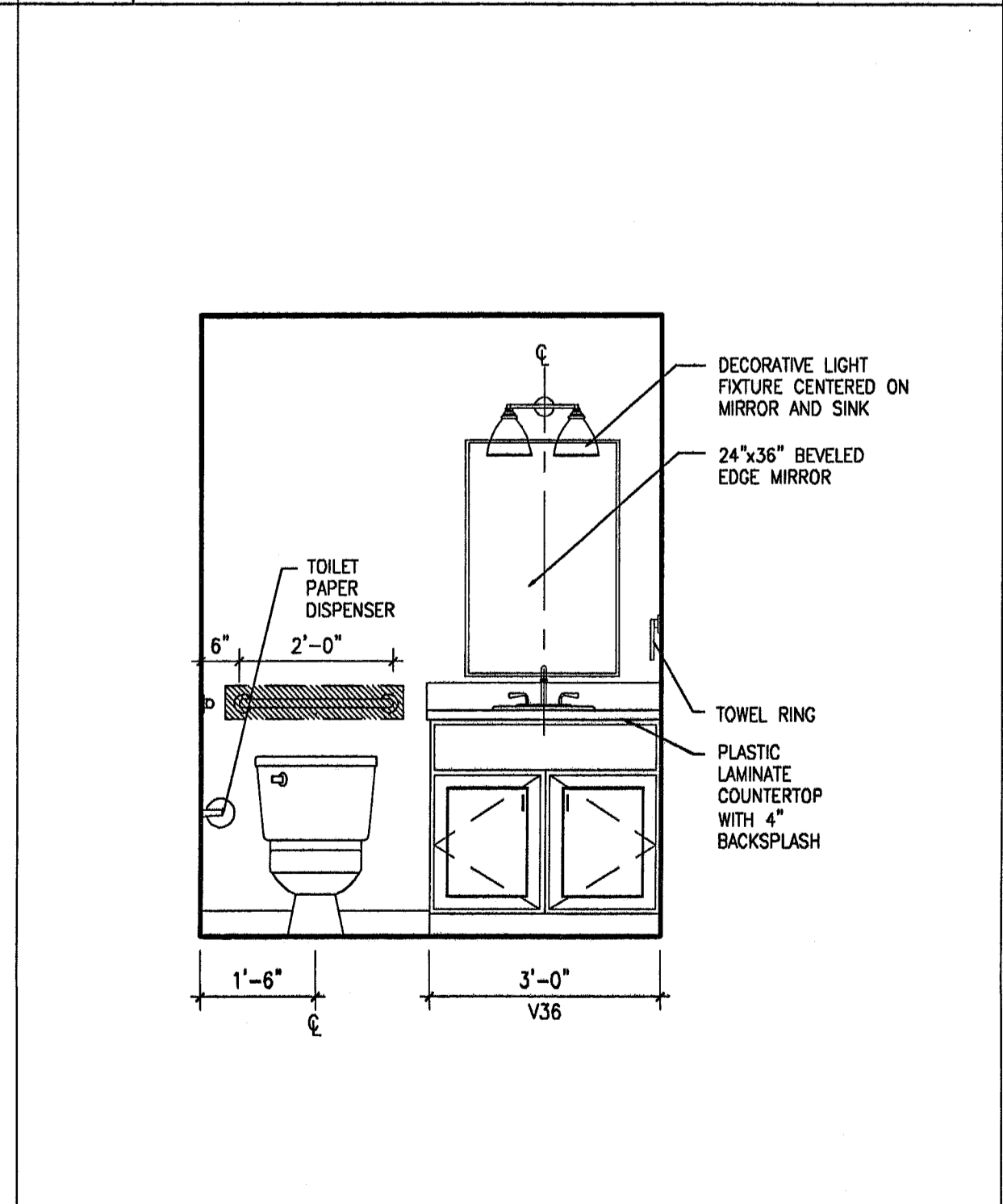
A6 UNIT 248- KITCHEN
1/2"-1/4" NORTH ELEVATION



A12 UNIT 248- KITCHEN
1/2"-1/4" SOUTH ELEVATION

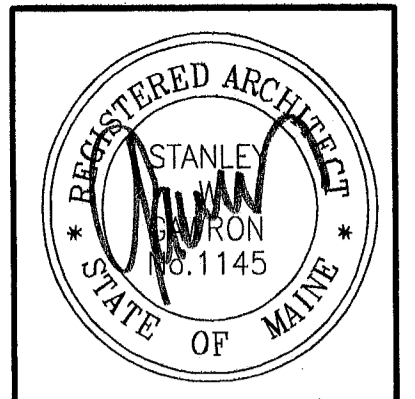


A15 UNIT 248- BATHROOM
1/2"-1/4" WEST ELEVATION



A19 NOTES
NTS

- REVISIONS**
- | # | DATE | DESCRIPTION |
|---|------|-------------|
| | | |
- DATE:** 2/2/07
PROJECT #: 060905
DRAWN BY: RLA
CHECKED BY: MET
DRAWING SCALE: AS NOTED
- SHEET TITLE:** INTERIOR ELEVATIONS
- A922**
- © COPYRIGHT 1985-2003
REPRODUCTION OR RESALE OF
THIS DOCUMENT WITHOUT
WRITTEN PERMISSION OF
GAWRON ARCHITECTS IS PROHIBITED



GAWRON TURGEON ARCHITECTS
29 Black Point Road
Scarborough, ME 04074
www.gawronturgeon.com
Tel. 207. 883. 6307
Fax. 207. 883. 0361

SEVENTY-FIVE STATES STREET
CUTLER HOUSE RENOVATION
PORTLAND, MAINE

2/2/07 PERMIT SET