

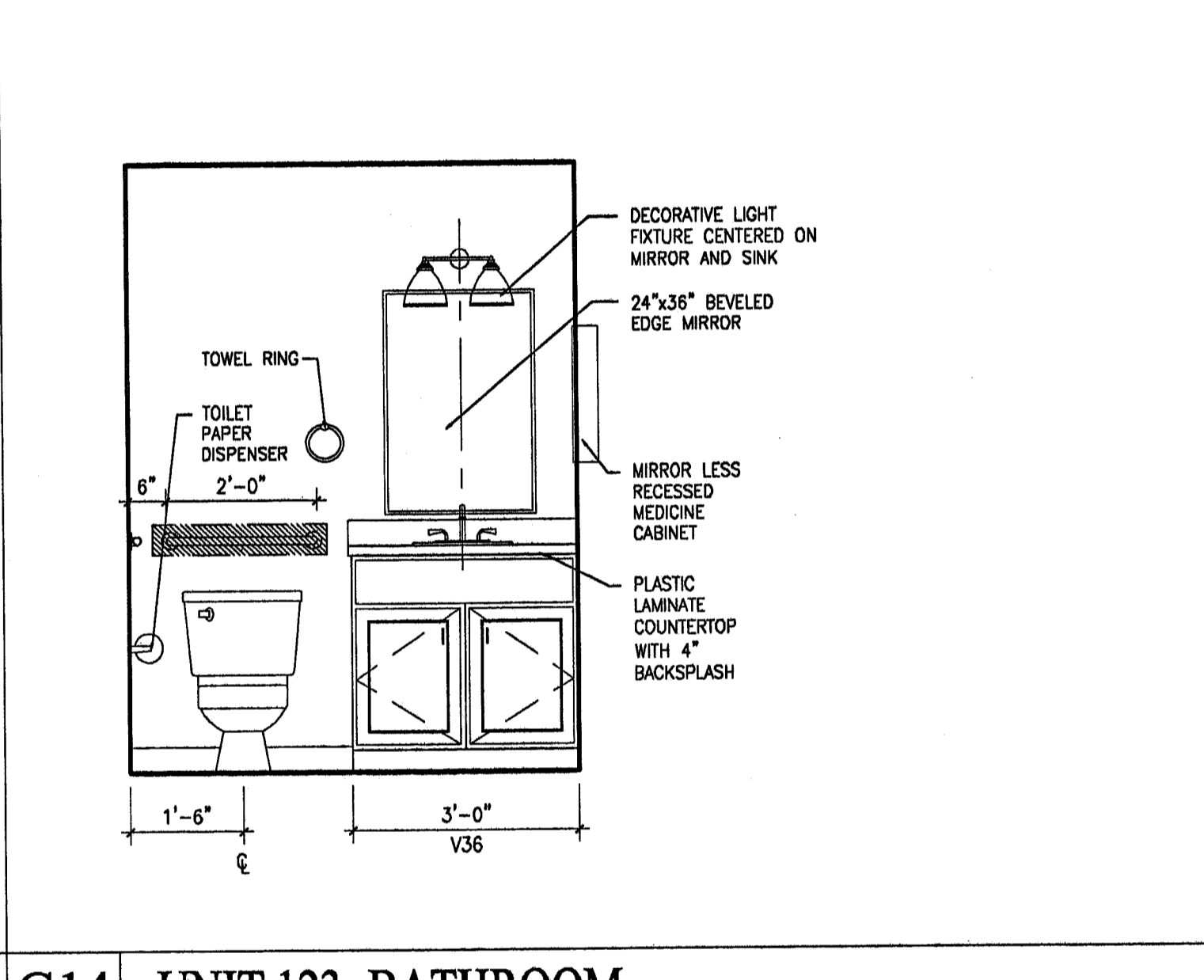
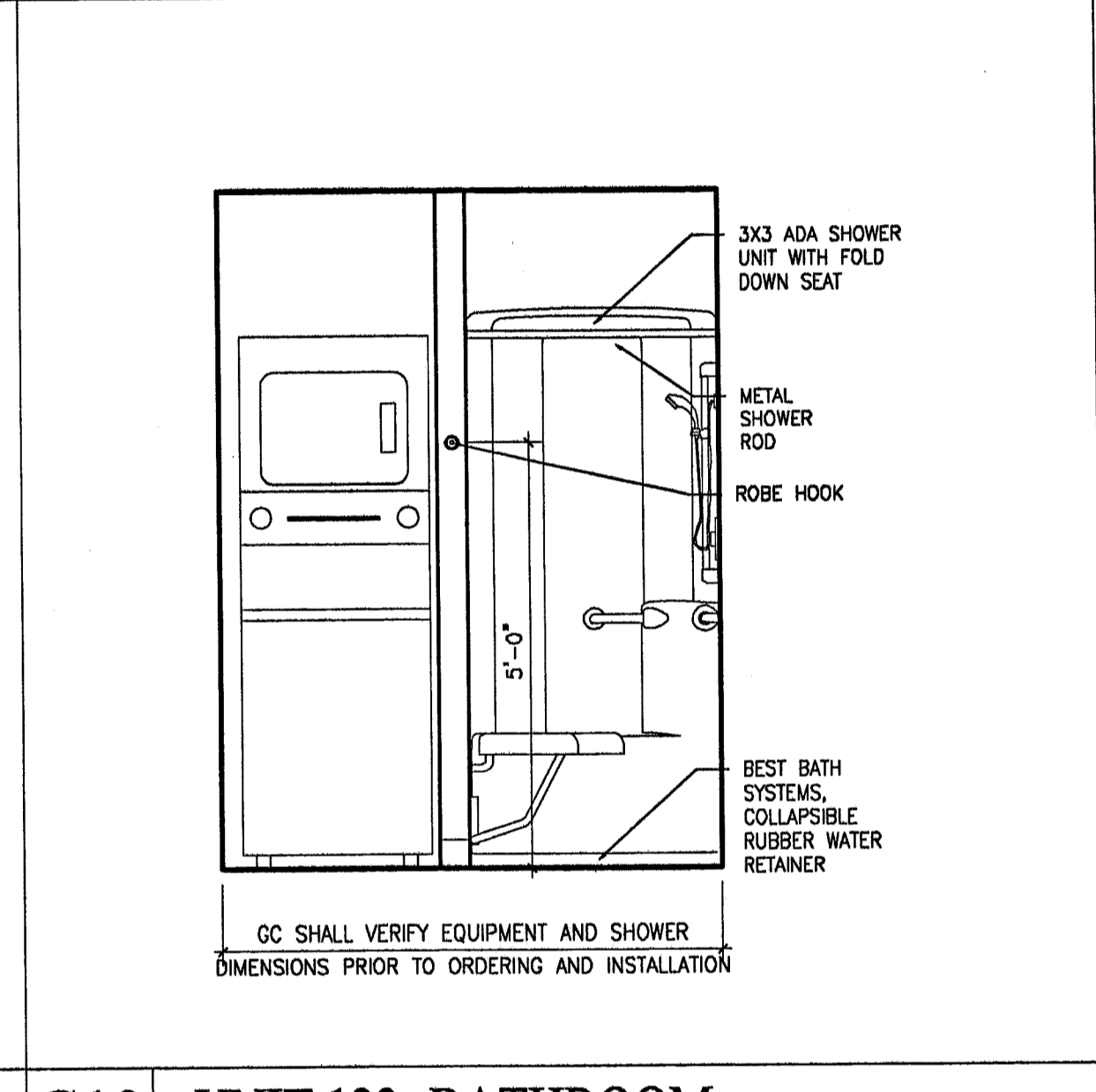
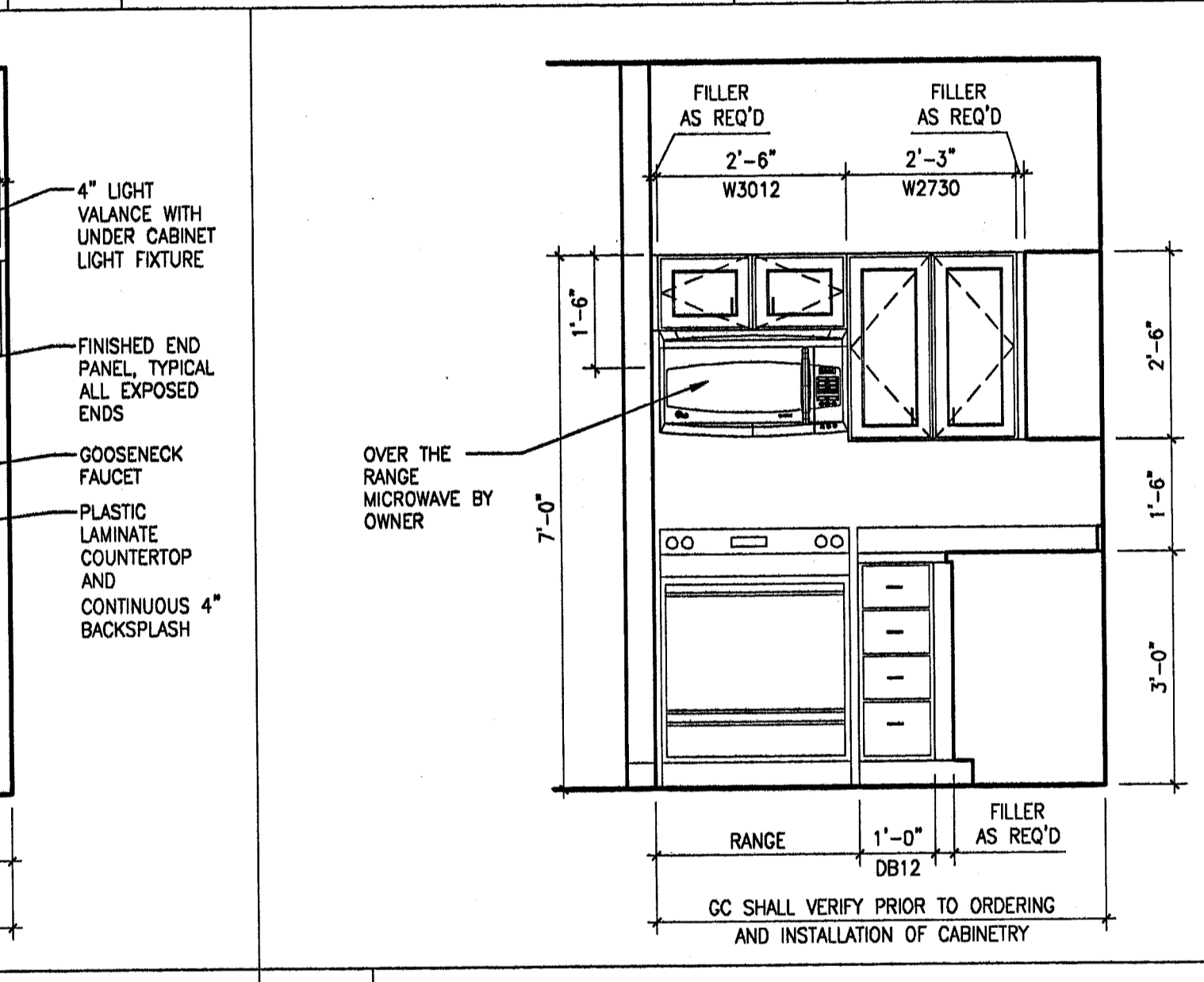
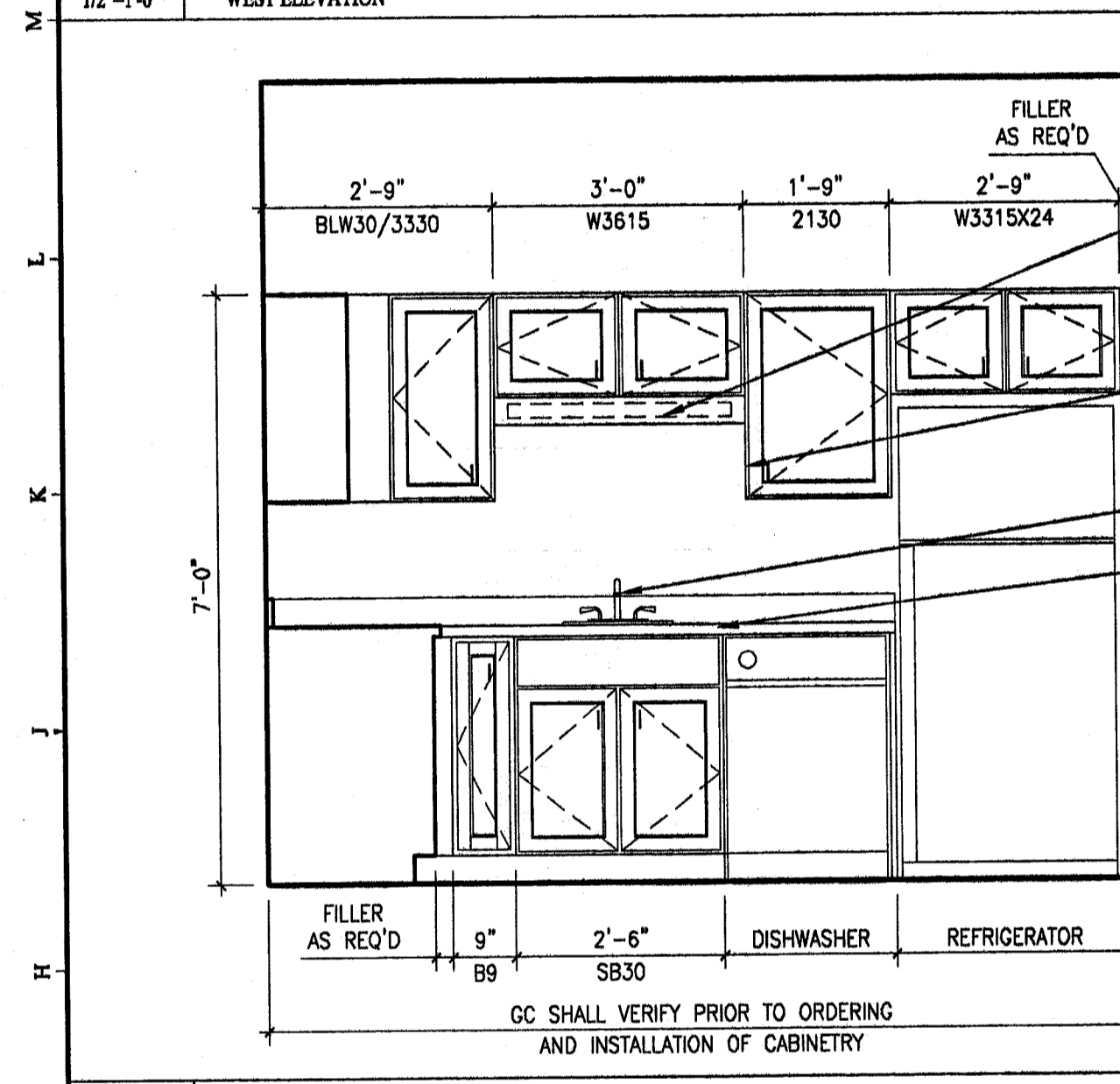
M1 UNIT 122- KITCHEN
1/2"-1'-0" WEST ELEVATION

M5 UNIT 122- KITCHEN
1/2"-1'-0" NORTH ELEVATION

M8 UNIT 122- KITCHEN
1/2"-1'-0" EAST ELEVATION

M12 UNIT 122- BATHROOM
1/2"-1'-0" NORTH ELEVATION

M15 UNIT 122- BATHROOM
1/2"-1'-0" WEST ELEVATION

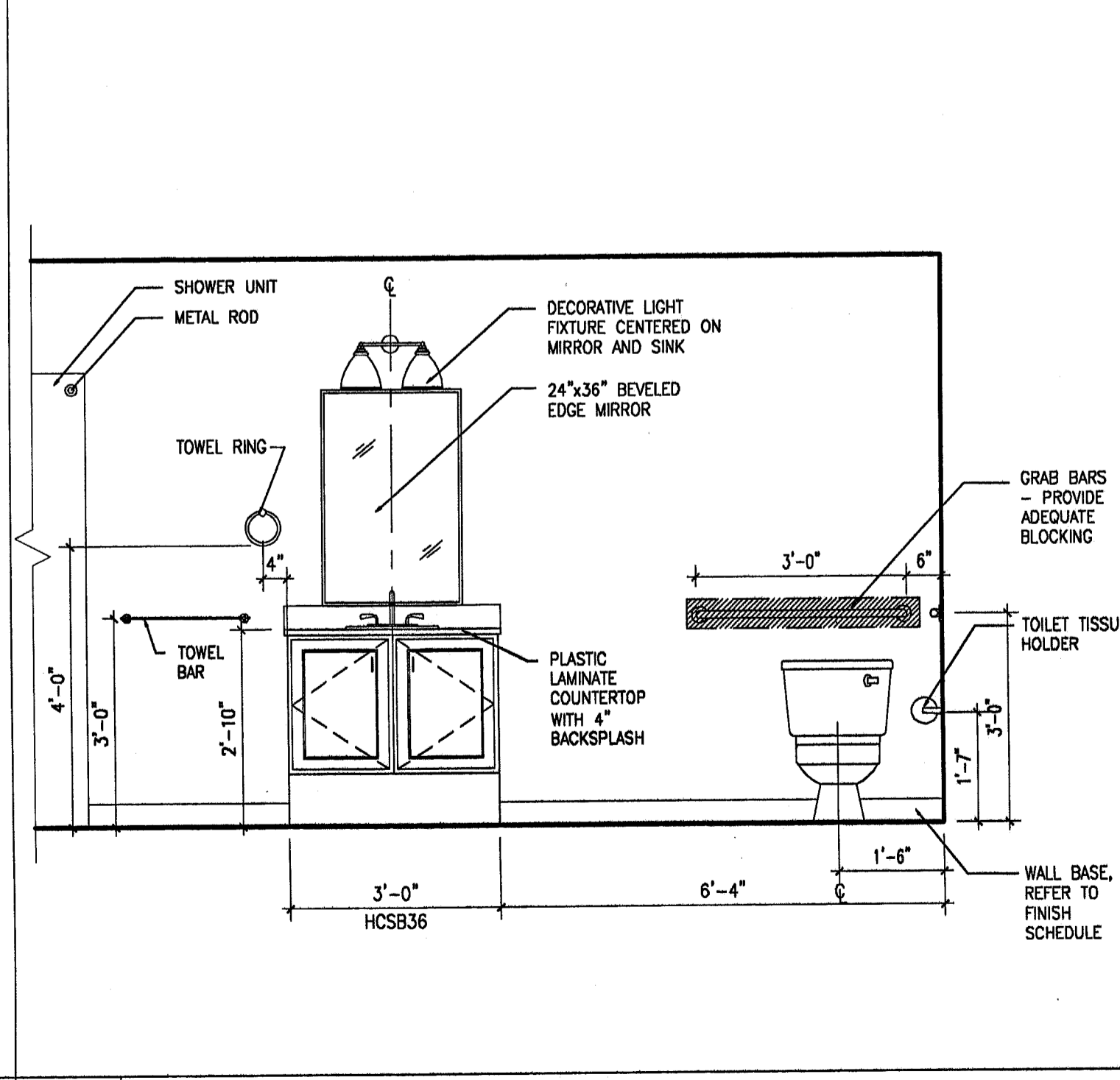
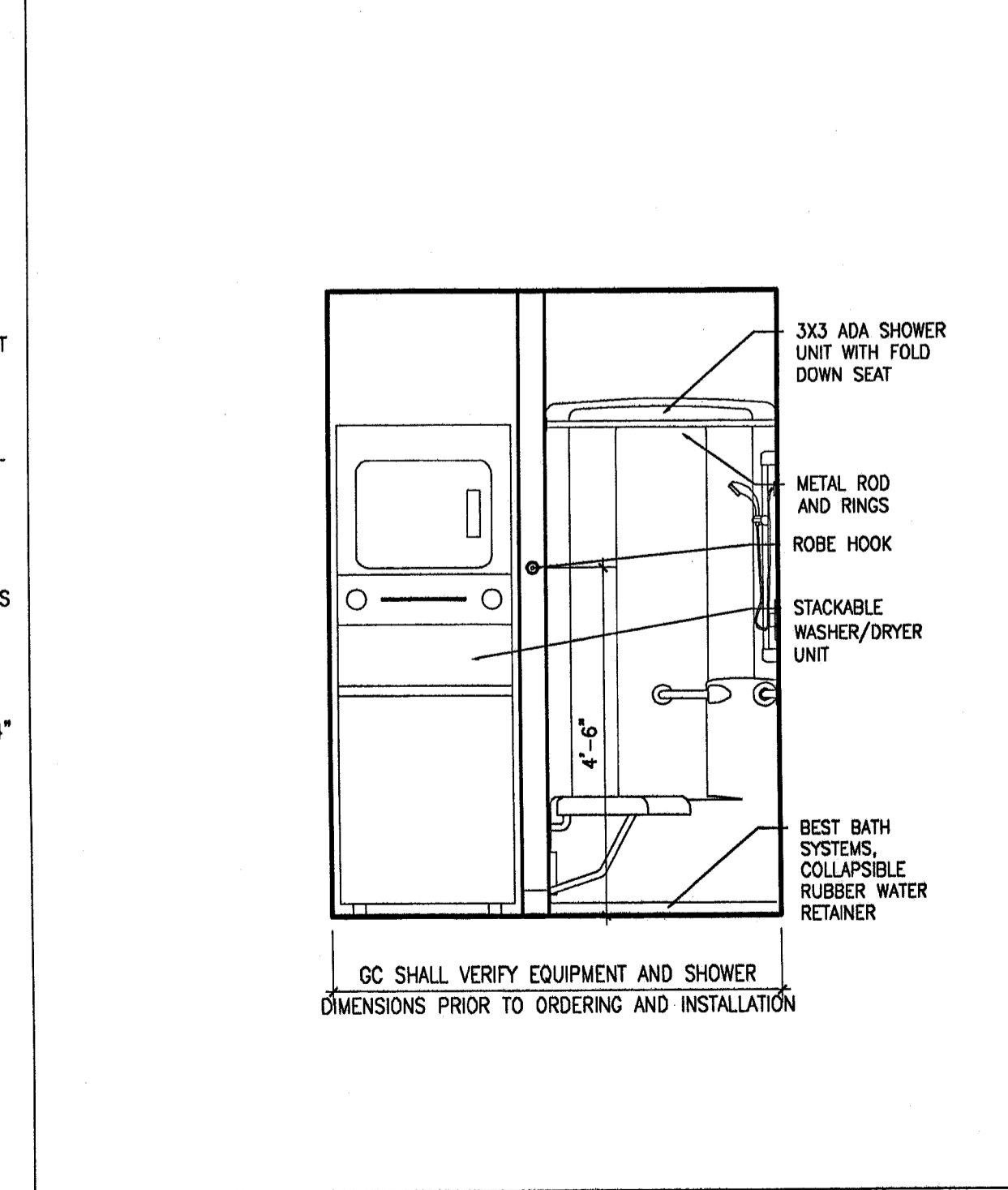
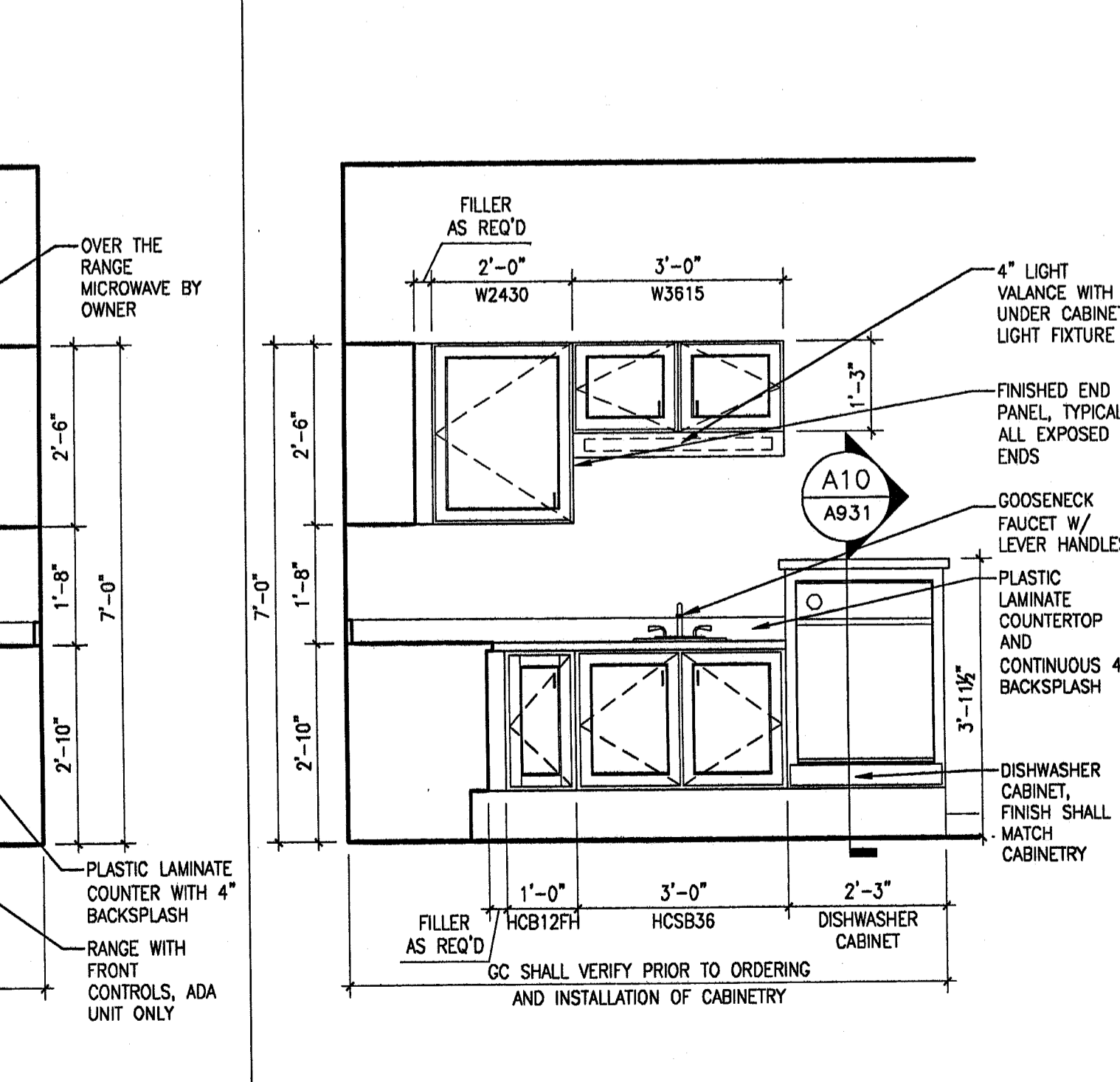
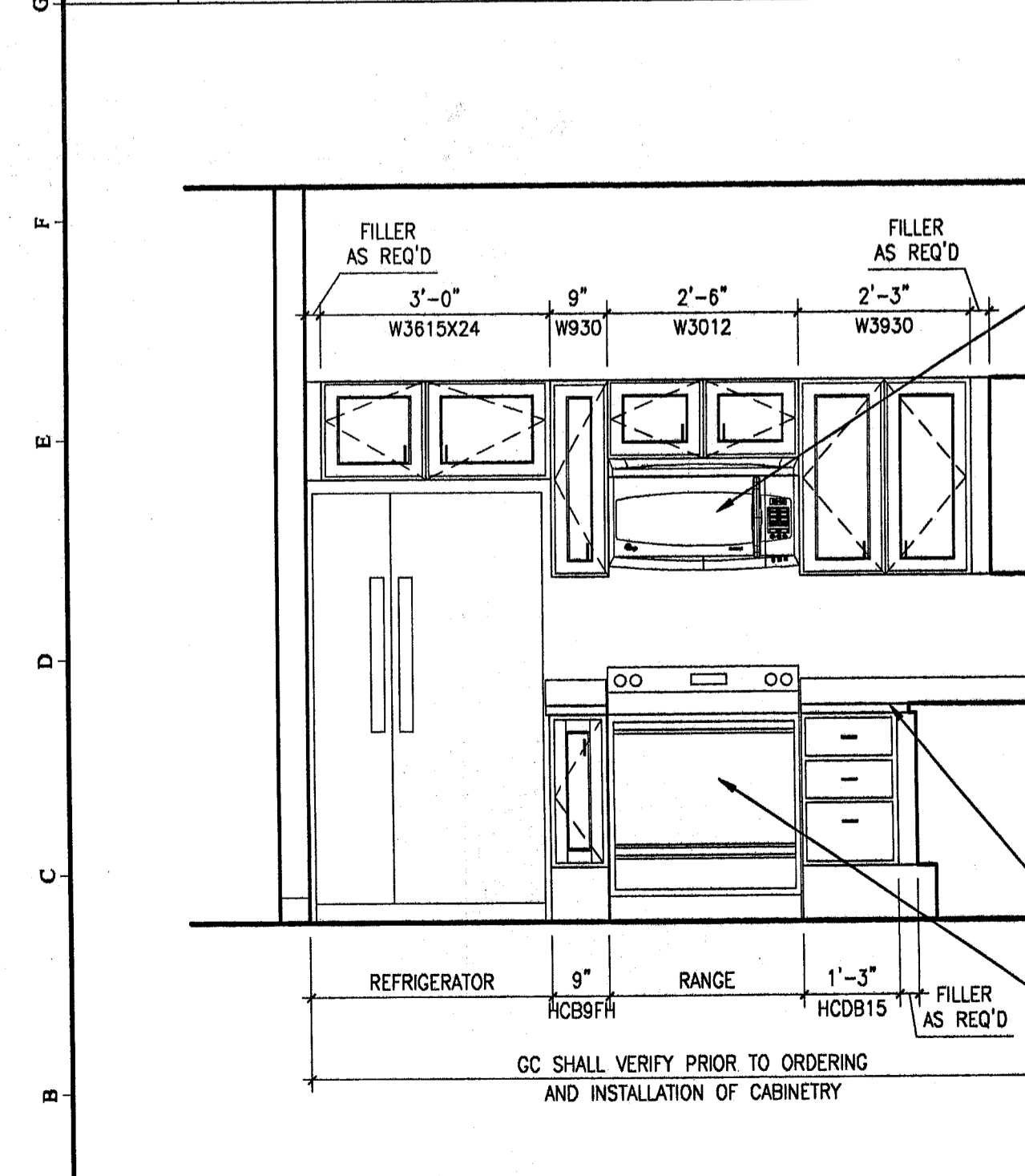


G1 UNIT 123- KITCHEN
1/2"-1'-0" NORTH ELEVATION

G6 UNIT 123- KITCHEN
1/2"-1'-0" WEST ELEVATION

G10 UNIT 123- BATHROOM
1/2"-1'-0" WEST ELEVATION

G14 UNIT 123- BATHROOM
1/2"-1'-0" EAST ELEVATION



A1 ADA UNIT 124- KITCHEN
1/2"-1'-0" NORTH ELEVATION

A6 ADA UNIT 124- KITCHEN
1/2"-1'-0" WEST ELEVATION

A10 ADA UNIT 124- BATHROOM
1/2"-1'-0" EAST ELEVATION

A14 ADA UNIT 124- BATHROOM
1/2"-1'-0" NORTH ELEVATION

NOTES:

- KITCHEN AND VANITY CABINETY: ARMSTRONG WORLD INDUSTRIES, INC. PREMIER SERIES CASEWORK. FINISH: TOFFEE. HARDWARE: TBD. ADA UNIT 124- PROVIDE ARMSTRONG UNIVERSAL ACCESS BASE CABINETS FOR THE KITCHEN AND VANITY CABINETY. 8" RAISED TOE SPACE. 32" HEIGHT CABINET. UPGRADE PROVIDE DOVETAIL DRAWERS WITH FULL EXTENSION DRAWER GLIDES AND WOOD END PANELS. CROWN: 2" CROWN MOLDING WOOD AND FINISH SHALL MATCH CABINET FINISH.
- TOILET ACCESSORIES: CREATIVE SPECIALTIES INTERNATIONAL THE DANBURY COLLECTION. FINISH: OIL RUBBED BRUNZE. 18" TOWEL BAR: DN67180RB. TOWEL RING: DN67800RB. PAPER HOLDER: DN67000RB. ROBE HOOK: DN67000RB.
- MEDICINE CABINET: ARMSTRONG WORLD INDUSTRIES, INC. MCR1624. FINISH: TOFFEE. NON MIRROR DOOR. FINISH: TOFFEE.
- WASHER/DRYER UNIT DIMENSIONS BASED ON GE UNITIZED SPACEMAKER WASHER AND DRYER. GS SHALL VERIFY AND COORDINATE ALL DIMENSIONS WITH OWNER SUPPLIED UNIT.
- APPLIANCES PROVIDED BY OWNER. GC SHALL VERIFY AND COORDINATE DIMENSIONS PRIOR TO ORDERING AND INSTALLATION OF CABINETY.
- WALL SAFES SHALL BE PROVIDED BY OWNER AND INSTALLED BY GC. GC SHALL VERIFY AND COORDINATE ALL DIMENSIONS PRIOR TO INSTALLATION- REFER TO FLOOR PLAN FOR LOCATIONS.
- SHELVING/ ROD AND SHELF SYSTEM: CLOSETMAID, A DIVISION OF CLAIRSON INTERNATIONAL OR SCHULTE. UNIT CLOSETS: 12 INCH DEEP. LINEN CLOSETS: 15 INCH DEEP. PROVIDE VINYL COATED, ADJUSTABLE WIRE SHELVING SYSTEM; SHELF WITH MATCHING MOUNTING HARDWARE FOR ATTACHMENT TO CONCEAL WOOD BLOCKING. GC SHALL COORDINATE MOUNTING HEIGHT WITH OWNER.
- GRAB BARS: FRANKLIN BRASS, SAFETY FIRST CUSTOM COLOR SERIES. COLOR: WHITE. BARS SHALL BE THERMOPLASTIC OR RESIN-COATED STEEL, 1 1/2" DIAMETER, .064" MINIMUM WALL THICKNESS WITH 1/8" THICK FLANGES; CONCEAL FASTENER MOUNTING. LENGTHS AND CONFIGURATION SHALL BE INDICATED ON THE DRAWINGS. GRAB BARS SHALL BE SCREWED TO SOLID BLOCKING IN STUD PARTITIONS. INSTALL GRAB BARS TO WITHSTAND A DOWNWARD LOAD OF AT LEAST 250 LBF. WHEN TESTED ACCORDING TO METHOD IN ASTM F 446.
- CORNER GUARDS: C/S ACRYLYN, STYLE SM-10, BULLNOSE EDGE. COLOR TO BE SELECTED FROM ACRYLYN STANDARD AND OPTIONAL COLORS, MATCHING TOP AND BOTTOM CAPS, SURFACE MOUNT ALUMINUM RETAINER. CONTACT: METRO ARCH SALES COMPANY, 781-545-8100. QUANTITY: 75.
- SIGNAGE: NEW ROOM AND DIRECTORY SIGNAGE SHALL MATCH EXISTING SIGNAGE. INTERIOR PLATE SIGNS MESSAGE INSERT SIGNS: SUBSTRATE: FABRICATE SIGNS FROM 1/2" THICK MATTE CLEAR ACRYLIC WITH 1/2" BEVELED BACKER PLATE. BACKER PLATE TO SIT ON 3/4" CUSTOM CUT WHITE MAPLE PANEL STAINED TO MATCH INTERIOR DECOR STAIN. EDGES MECHANICALLY AND SMOOTHLY FINISHED TO ELIMINATE CUT MARKS. BACKGROUND COLOR TO BE SUBSURFACE DESIGN OF SIGN. ASSEMBLY: SANDWICH TWO EXACT SIZED ACRYLIC PIECES WITH FOAM TAPE AS DIVIDERS. FACE PLATE TO HAVE CLEAR WINDOWS FOR MESSAGE INSERTS. BACKGROUND COLOR: TBS BY ARCHITECT EDGES: STRAIGHT CORNERS: AS INDICATED SIZE: AS INDICATED COPY: HELVETICA COPY COLOR: TBS BY ARCHITECT LETTERFORM: APPLY 1/8" COMPUTER PRECISION CUT TACTILE COPY. ALL UPPERCASE, NORMAL SPACING. 1/8" MINIMUM LETTER HEIGHT. TACTILE LETTERS WILL BE APPLIED IN A MANNER THAT AVOIDS SCORING OF THE SIGN'S SURFACE AT BASE OF TACTILE LETTERS. BRAILLE: USE RASTER PROCESS TO CREATE ALL BRAILLE CELLS. DRILL HOLES IN EACH DOT LOCATION AND FIT CLEAR RASTER BALLS INTO EACH HOLE. DIRECTORIES: SHALL MATCH INTERIOR PLATE SIGNS.
- STAIR: CROWN HERITAGE, CLASSIC WOOD STAIRS SERIES. PAINTED TO MATCH TRIM.

REGISTERED ARCHITECT
STANLEY
1145
STATE OF MAINE

GAWRON TURGEON ARCHITECTS
29 Black Point Road
Scarborough, ME 04074
www.gawronturgeon.com
Tel. 207. 883. 6307
Fax. 207. 883. 0361

SEVENTY-FIVE STATES STREET
CUTLER HOUSE RENOVATION
PORTLAND, MAINE

REVISIONS	
#	DESCRIPTION

DATE:	2/2/07
PROJECT #	060905
DRAWN BY:	RLA
CHECKED BY:	MET
DRAWING SCALE	AS NOTED

SHEET TITLE
INTERIOR ELEVATIONS

A921

2/2/07 PERMIT SET