

GAWRON TURGEON ARCHITECTS
 29 Black Point Road
 Scarborough, ME 04074
 www.gawronturgeon.com
 Tel. 207. 883. 6307
 Fax. 207. 883. 0361

SEVENTY-FIVE STATE STREET
 CUTLER HOUSE RENOVATION
 PORTLAND MAINE

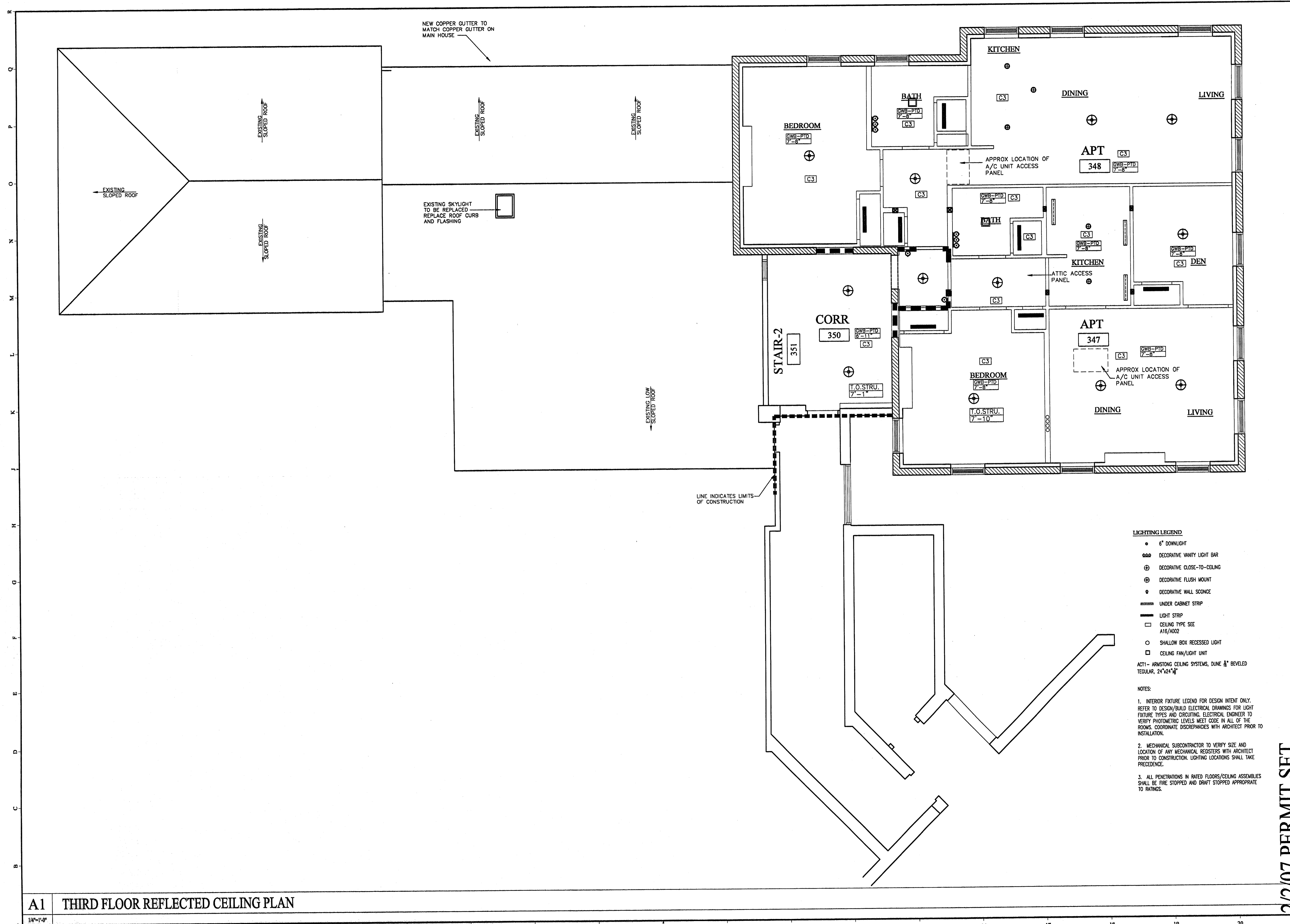
REVISIONS		
#	DATE	DESCRIPTION

DATE:	2/2/07
PROJECT #	060905
DRAWN BY:	RLA
CHECKED BY:	MET
DRAWING SCALE	1/4"=1'-0"

SHEET TITLE
 THIRD FLOOR REFLECTED CEILING PLAN

A303

© COPYRIGHT 1985-2003
 REPRODUCTION OR RESALE OF
 THIS DOCUMENT WITHOUT THE
 WRITTEN PERMISSION OF
 GAWRON TURGEON ARCHITECTS IS PROHIBITED



- LIGHTING LEGEND**
- 6" DOWNLIGHT
 - ⊙ DECORATIVE VANITY LIGHT BAR
 - ⊕ DECORATIVE CLOSE-TO-CEILING
 - ⊗ DECORATIVE FLUSH MOUNT
 - ⊙ DECORATIVE WALL SCONCE
 - ▬ UNDER CABINET STRIP
 - ▬ LIGHT STRIP
 - CEILING TYPE SEE A16/A002
 - SHALLOW BOX RECESSED LIGHT
 - CEILING FAN/LIGHT UNIT
- ACT1 - ARMSTRONG CEILING SYSTEMS, DUNE 8" BEVELED REGULAR, 24"x24"x1/2"

- NOTES:**
- INTERIOR FIXTURE LEGEND FOR DESIGN INTENT ONLY. REFER TO DESIGN/BUILD ELECTRICAL DRAWINGS FOR LIGHT FIXTURE TYPES AND CIRCUITING. ELECTRICAL ENGINEER TO VERIFY PHOTOMETRIC LEVELS MEET CODE IN ALL OF THE ROOMS. COORDINATE DISCREPANCIES WITH ARCHITECT PRIOR TO INSTALLATION.
 - MECHANICAL SUBCONTRACTOR TO VERIFY SIZE AND LOCATION OF ANY MECHANICAL REGISTERS WITH ARCHITECT PRIOR TO CONSTRUCTION. LIGHTING LOCATIONS SHALL TAKE PRECEDENCE.
 - ALL PENETRATIONS IN RATED FLOORS/CEILING ASSEMBLIES SHALL BE FIRE STOPPED AND DRAFT STOPPED APPROPRIATE TO RATINGS.

A1 THIRD FLOOR REFLECTED CEILING PLAN

2/2/07 PERMIT SET