

**GAWRON  
TURGEON  
ARCHITECTS**

29 Black Point Road  
Scarborough, ME 04074  
www.gawronturgeon.com  
Tel. 207. 883. 6307  
Fax. 207. 883. 0361

SEVENTY-FIVE STATE STREET

CUTTER HOUSE RENOVATION  
PORTLAND, MAINE

**REVISIONS**

#	DATE	DESCRIPTION

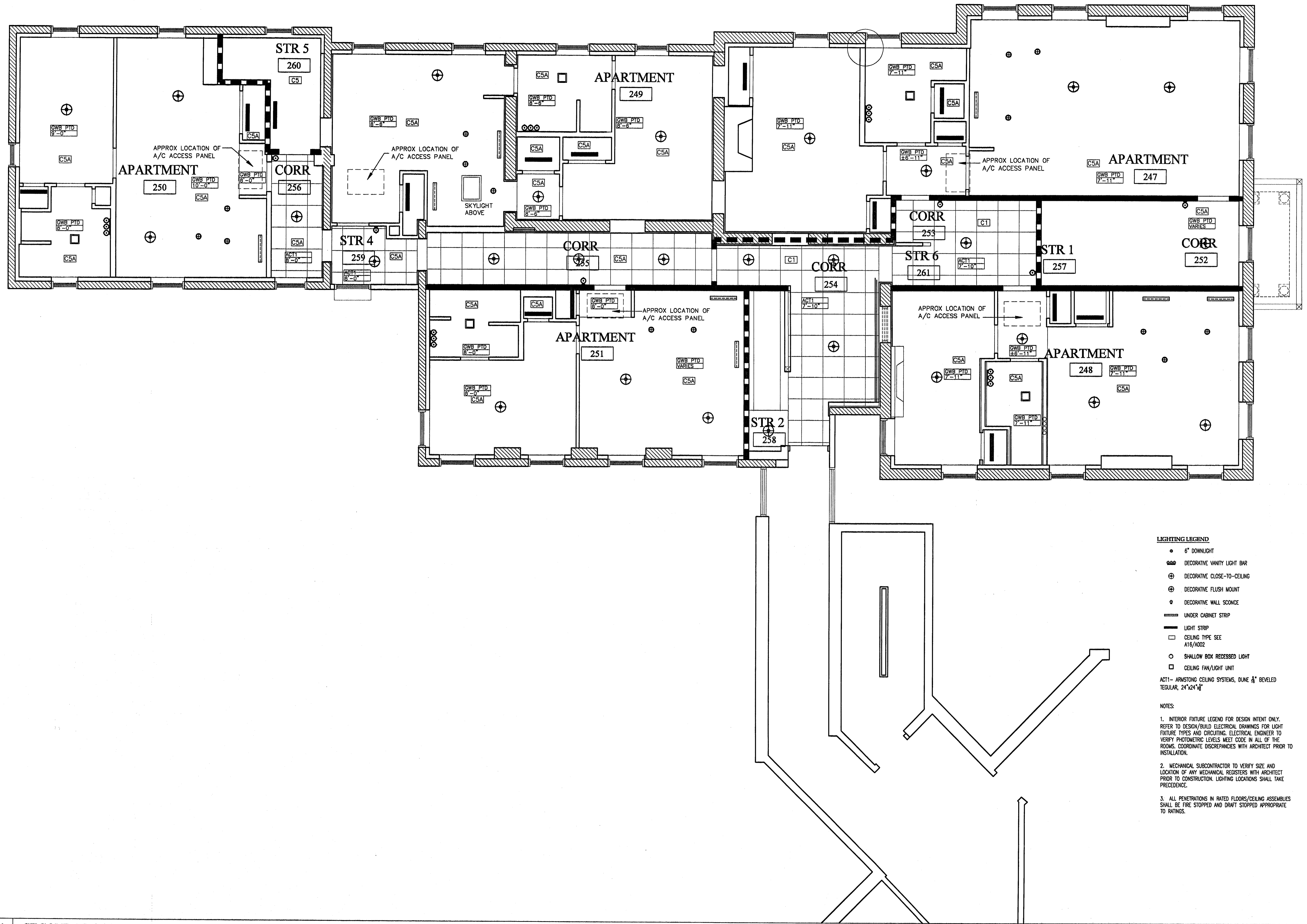
DATE:	2/2/07
PROJECT #	060905
DRAWN BY:	KW
CHECKED BY:	
DRAWING SCALE	1/4"=1'-0"

**SHEET TITLE**

SECOND FLOOR  
REFLECTED CEILING PLAN

A302

© COPYRIGHT 1985-2003  
REPRODUCTION OR REVISE OF  
THIS DOCUMENT WITHOUT  
WRITTEN PERMISSION BY  
GAWRON ARCHITECTS IS PROHIBITED



**LIGHTING LEGEND**

- 6" DOWNLIGHT
- ☉ DECORATIVE VANITY LIGHT BAR
- ⊕ DECORATIVE CLOSE-TO-CEILING
- ⊕ DECORATIVE FLUSH MOUNT
- DECORATIVE WALL SCONCE
- UNDER CABINET STRIP
- LIGHT STRIP
- CEILING TYPE SEE A16/A02
- SHALLOW BOX RECESSED LIGHT
- CEILING FAN/LIGHT UNIT

ACT1- ARMSTRONG CEILING SYSTEMS, DUNE 8" BEVELED  
REGULAR, 24"x24"x1"

**NOTES:**

1. INTERIOR FIXTURE LEGEND FOR DESIGN INTENT ONLY. REFER TO DESIGN/BUILD ELECTRICAL DRAWINGS FOR LIGHT FIXTURE TYPES AND CIRCUITING. ELECTRICAL ENGINEER TO VERIFY PHOTOMETRIC LEVELS MEET CODE IN ALL OF THE ROOMS. COORDINATE DISCREPANCIES WITH ARCHITECT PRIOR TO INSTALLATION.
2. MECHANICAL SUBCONTRACTOR TO VERIFY SIZE AND LOCATION OF ANY MECHANICAL REGISTERS WITH ARCHITECT PRIOR TO CONSTRUCTION. LIGHTING LOCATIONS SHALL TAKE PRECEDENCE.
3. ALL PENETRATIONS IN RATED FLOORS/CEILING ASSEMBLIES SHALL BE FIRE STOPPED AND DRAFT STOPPED APPROPRIATE TO RATINGS.

A1 SECOND FLOOR REFLECTED CEILING PLAN

2/2/07 PERMIT SET